

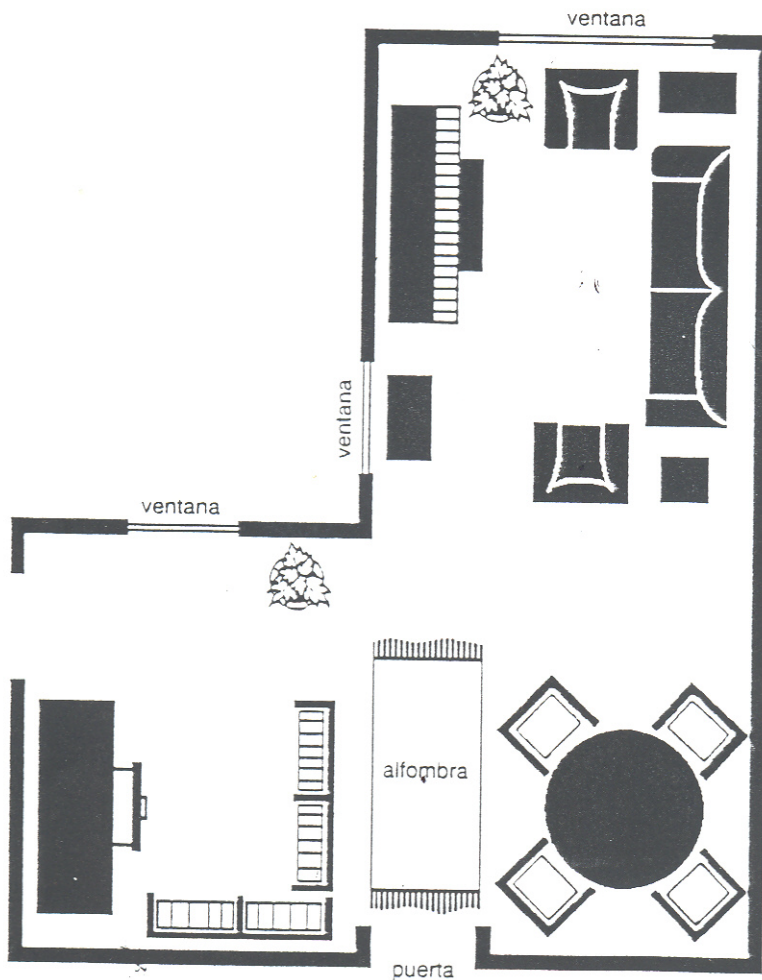
# 14. La sala de estar

## Context

In this activity you will work with another student to describe the location of furniture in a room. You will carry out a telephone conversation between an interior designer and a client. One of you will work with a completed floor plan and the other will work with the blank plan. Both of you may consult the *Lista de Muebles* (List of Furniture).

## First Student

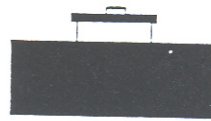
You are the interior designer. You must call your client and indicate what furniture you have chosen and where it should be placed. Since this is a phone conversation, you must give instructions with words alone. Do not look at or point to your partner's diagram.



estantería (F)



armario (m)



silla (f)



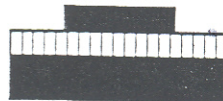
sofa (m)



sillón (m)



piano (m)



planta (f)



mesa redonda



mesita rectangular

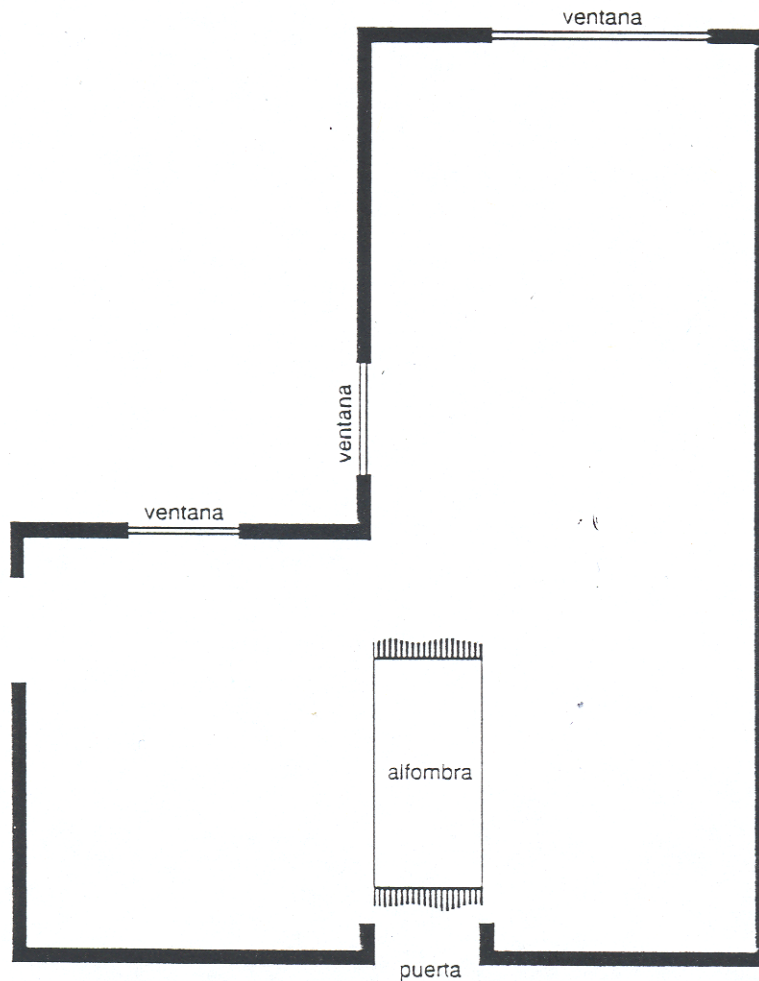


mesita cuadrada



## Second Student

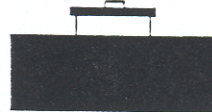
You are the client. You call your decorator for instructions on completing the floor plan for your living room. Using only the *Lista de Muebles* and verbal cues from the decorator, fill in the blank floor plan. You can ask for repetition or clarifications as often as you like, but you cannot see the designer's floor plan. When you have finished, compare your diagrams to see if they are the same.



estantería (F)



armario (m)



silla (f)



sofá (m)



sillón (m)



piano (m)



planta (f)



mesa redonda



mesita rectangular



mesita cuadrada

