

## A survey for *Sirex noctilio* and native woodwasps in Alabama

Andrea Cole<sup>1</sup>, Ryan Nadel<sup>1</sup>, Andrew Liebhold<sup>2</sup>,  
Bernard Slippers<sup>3</sup> and Lori Eckhardt<sup>1</sup>

<sup>1</sup> Forest Health Dynamics Laboratory, School of Forestry and Wildlife Sciences, Auburn University, Auburn, Alabama, USA <sup>2</sup> USDA Forest Service <sup>3</sup> Forestry and Agricultural Biotechnology Institute, University of Pretoria, South Africa

Forest Health Dynamics Laboratory  
School of Forestry and Wildlife Sciences, Auburn University




---

---

---

---

---

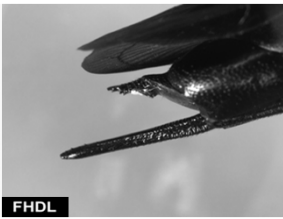
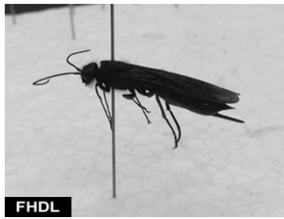
---

---

---

Forest Health Dynamics Laboratory

### Siricid woodwasps



School of Forestry and Wildlife Sciences, Auburn University

---

---

---

---

---

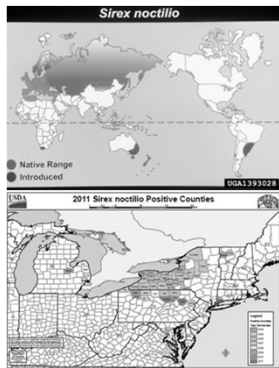
---

---

---

Forest Health Dynamics Laboratory

### *Sirex noctilio* Infestations



School of Forestry and Wildlife Sciences, Auburn University

---

---

---

---

---

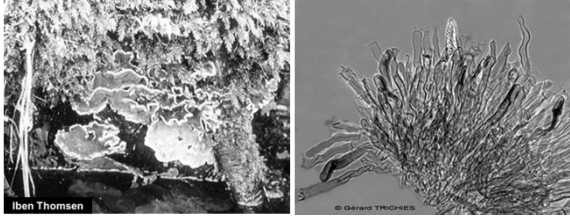
---

---

---

Forest Health Dynamics Laboratory

### *Amylostereum* Associated Fungi



Iben Thomsen

© Gerald TRICHELIS

School of Forestry and Wildlife Sciences, Auburn University

---

---

---

---

---


---

---

---

Forest Health Dynamics Laboratory

### *Deladenus siricidicola*



FHDL

Robin Bedding

School of Forestry and Wildlife Sciences, Auburn University

---

---

---

---

---

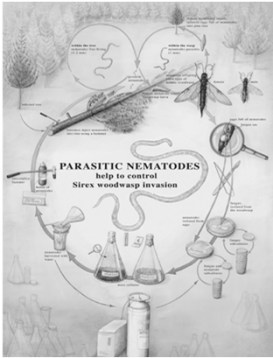
---

---

---

Forest Health Dynamics Laboratory

### Life Cycle



PARASITIC NEMATODES help to control Sirex woodwasp invasion

School of Forestry and Wildlife Sciences, Auburn University

---

---

---

---

---

---

---

---

Forest Health Dynamics Laboratory

## Objectives

To identify populations of woodwasps and their competitors in forests across Alabama

↓

To use molecular techniques for species identification of woodwasps, fungi, and nematodes

↓

To determine which species of fungi and nematodes are associated with woodwasps in Alabama

School of Forestry and Wildlife Sciences, Auburn University

---

---

---

---

---



---

---

---

Forest Health Dynamics Laboratory

## Trapping Survey

School of Forestry and Wildlife Sciences, Auburn University

---

---

---

---

---

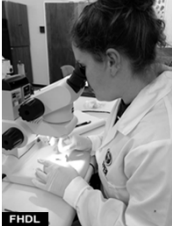
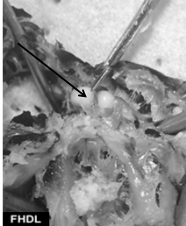

---

---

---

Forest Health Dynamics Laboratory

## Siricid Dissection

School of Forestry and Wildlife Sciences, Auburn University

---

---

---

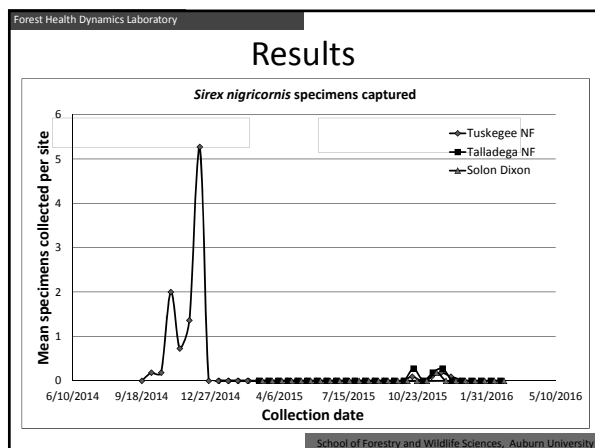
---

---

---

---

---




---

---

---

---

---

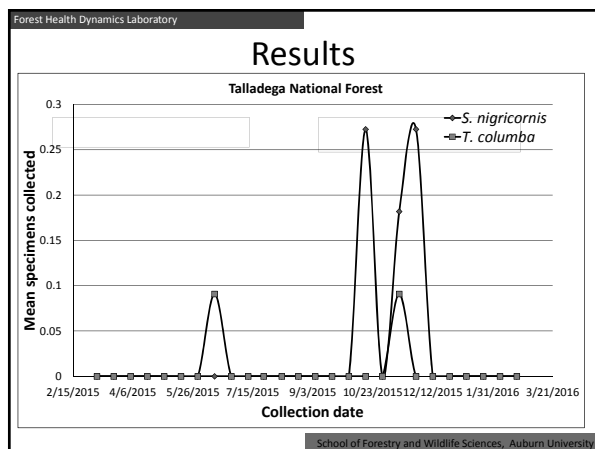
---

---

---

---

---




---

---

---

---

---

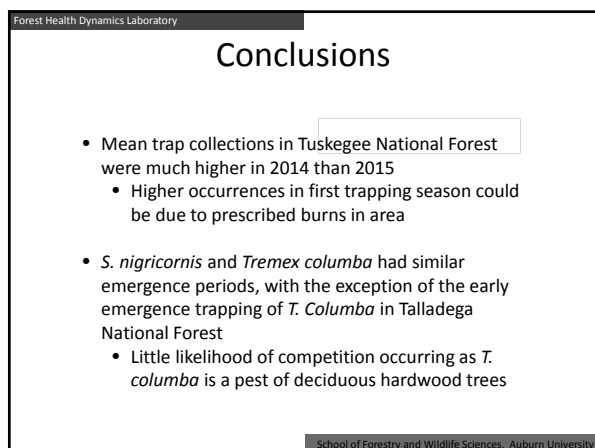
---

---

---

---

---




---

---

---

---

---

---

---

---

---

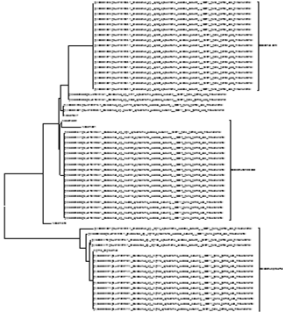
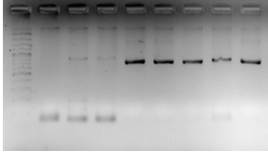
---

Forest Health Dynamics Laboratory

## Continuing Research

At the Forestry and Agricultural Biotechnology Institute, University of Pretoria, South Africa

- Molecular identification of *Sirex*, *Amylostereum*, and *Deladenus* species



School of Forestry and Wildlife Sciences, Auburn University

---

---

---

---

---


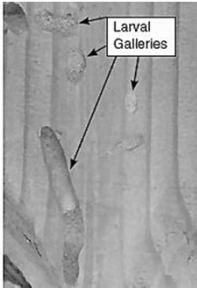

---

---

---

Forest Health Dynamics Laboratory

## Symptoms



School of Forestry and Wildlife Sciences – Auburn University

---

---

---

---

---


---

---


---

Forest Health Dynamics Laboratory

## Acknowledgments



Adam Trautwig	Nick Barnwell
Jeff Chieppa	Nick Yashko
Tessa Bauman	Gifty Acquah
Pratima Devkota	Charles Essien
Cody Hartzog	Dalton Smith
Jordan Heath	Sarah Peadar
Ashton Newman	Shrijana Duwadi
Wilson Strickland	John Mensah
Chase Seals	Tyler Wahl
Joel Martin	



School of Forestry and Wildlife Sciences, Auburn University

---

---

---

---

---

---

---

---