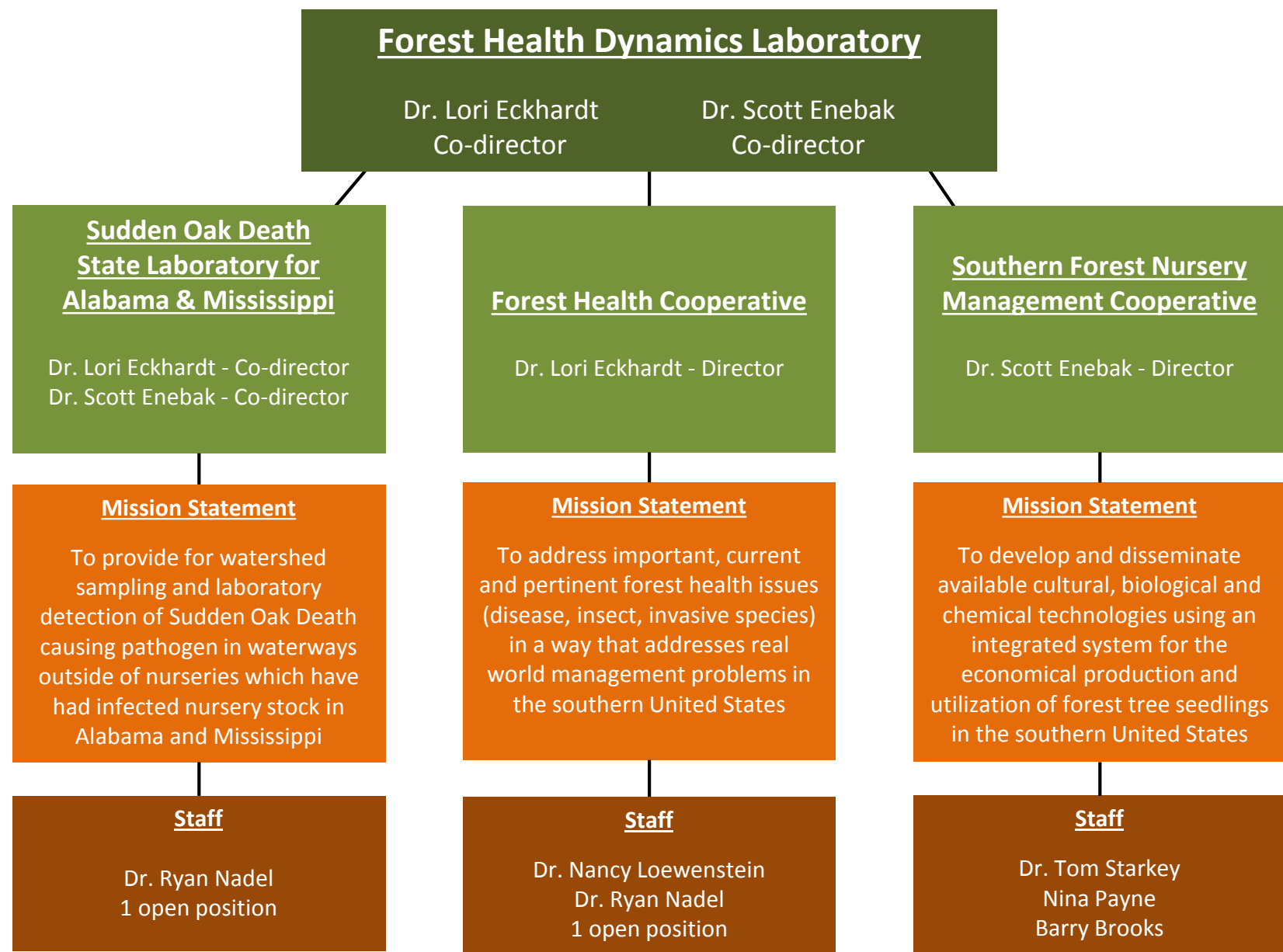


# 2015 JOINT AUBURN UNIVERSITY NURSERY COOPERATIVE & FOREST HEALTH COOPERATIVE MEETING



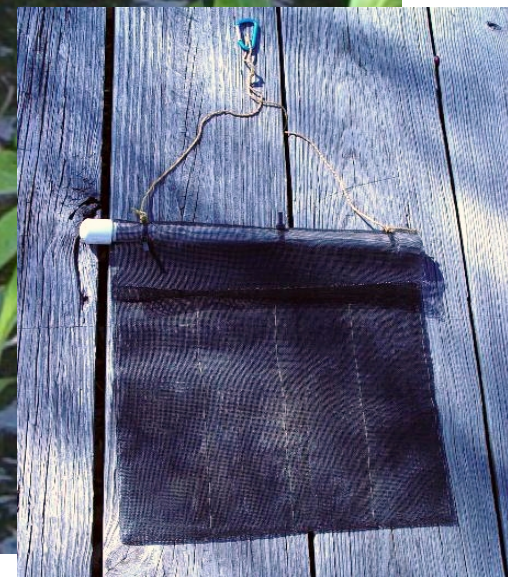
Scott Enebak & Lori Eckhardt - Directors





# Sudden Oak Death State Laboratory

## Field Sampling – Stream Baiting



Source: Steve Oak - USDA Forest Service, Southern Region FHP





# Forest Health Cooperative



# Membership – Forest Health Cooperative

## Industry

- ❑ **Weyerhaeuser**
- ❑ **Plum Creek**
- ❑ **Hancock Forest Management**
- ❑ **Rayonier**
- ❑ **Westervelt Company**
- ❑ **Arborgen**
- ❑ **Scotch Lumber Company**
- ❑ **Delaney Development**
- ❑ **Molpus Timber Management**
- ❑ **F&W Forestry Services**
- ❑ **Burgin Land, LLC**
- ❑ **Forestry & Land Resource Consultants**
- ❑ **Alabama Farmers Federation**
- ❑ **Beth Richardson**

## Federal

- ❑ **USFS – National Forest System**
- ❑ **USFS – Southern Research Station**

## State

- ❑ **Alabama Forestry Commission**

# Main Research Thrusts

- ❑ **Pine decline associated fungi and root-feeding bark beetles**
- ❑ **Physiological changes induced by pine decline associated fungi in loblolly pine**
- ❑ **Family resistance to pine decline associated fungi**
- ❑ **Sirex distribution in Alabama**
- ❑ **Effects of cogongrass invasion in pine stands**

# Pathogenicity & Virulence



## Fungi

*L. procerum*  
*L. terebrantis*

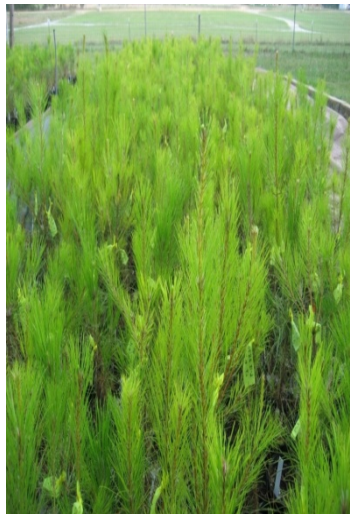
*G. alacris*  
*G. huntii*

10 new undescribed  
species of *Leptographium*.  
*Grosmannia* and  
*Ophiostoma*





# *Pinus taeda* Family Resistance





# Cogongrass: Does it affect pine health, root-feeding bark beetle populations and pine decline susceptibility?

## Cogongrass



## Non-Cogongrass







# Southern Forest Nursery Management Cooperative



# Membership – Nursery Cooperative

## States

Arkansas  
Georgia  
North Carolina  
Oklahoma  
South Carolina  
Tennessee  
Virginia

## Industry

Plum Creek  
Rayonier  
Weyerhaeuser

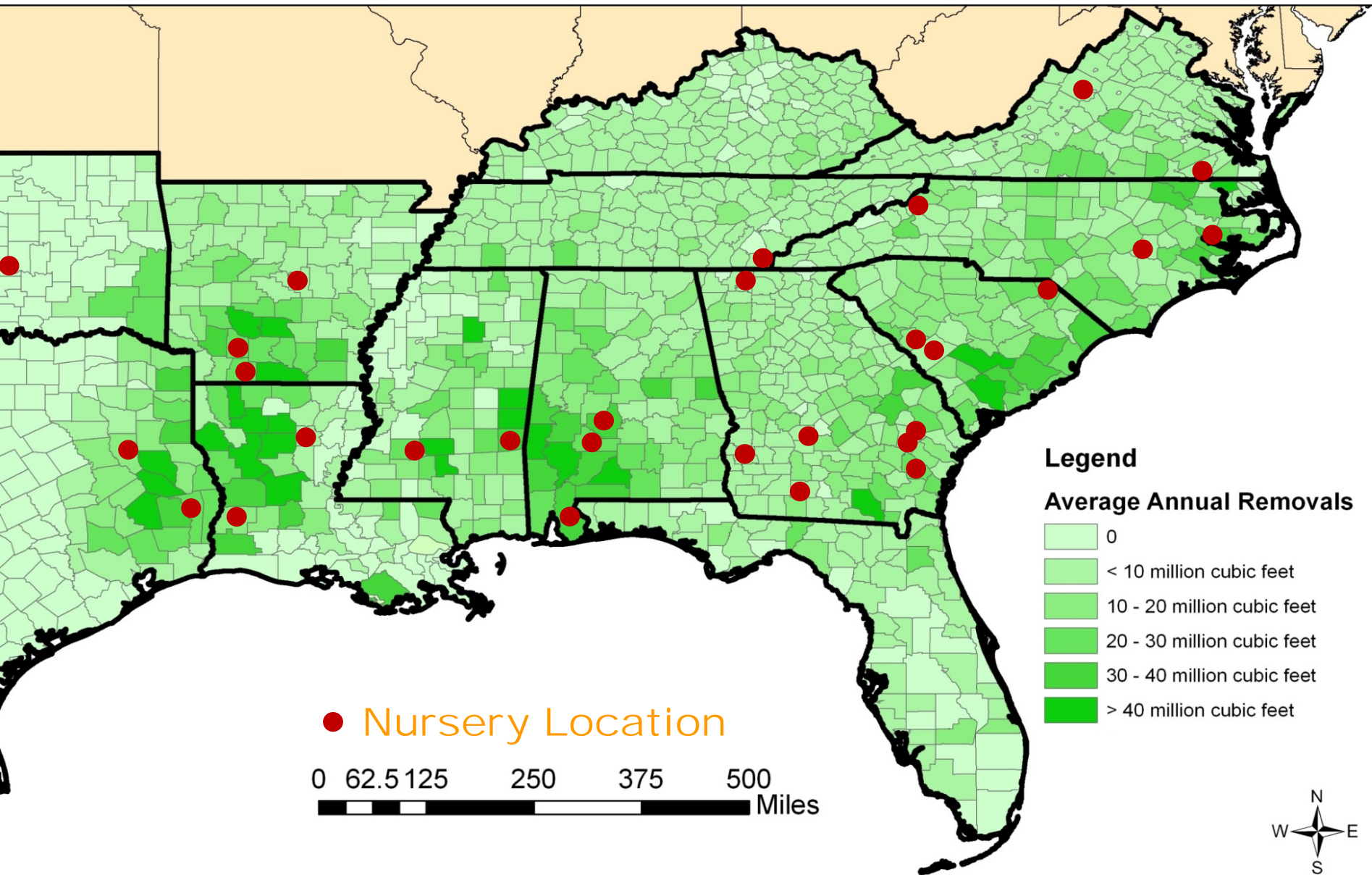
## Private

International Forest Co  
Arborgen  
Native Forest Nursery  
Campbell Group  
Westervelt

## Federal

US Forest Service

# Southern Forest Nursery Management Cooperative





# Main Research Focus Areas

- **Herbicide testing and labeling**
- **Seedling quality and survival**
- **Fungicide testing and labeling**
- **Soil fumigant testing**



# Fungicide Testing and Labeling

The Nursery Cooperatives' research efforts lead to the identification of a new fungicide, prothioconazole (Proline) for the control of three important forest-nursery fungal diseases.

**Fusiform Rust**



**Pitch Canker**



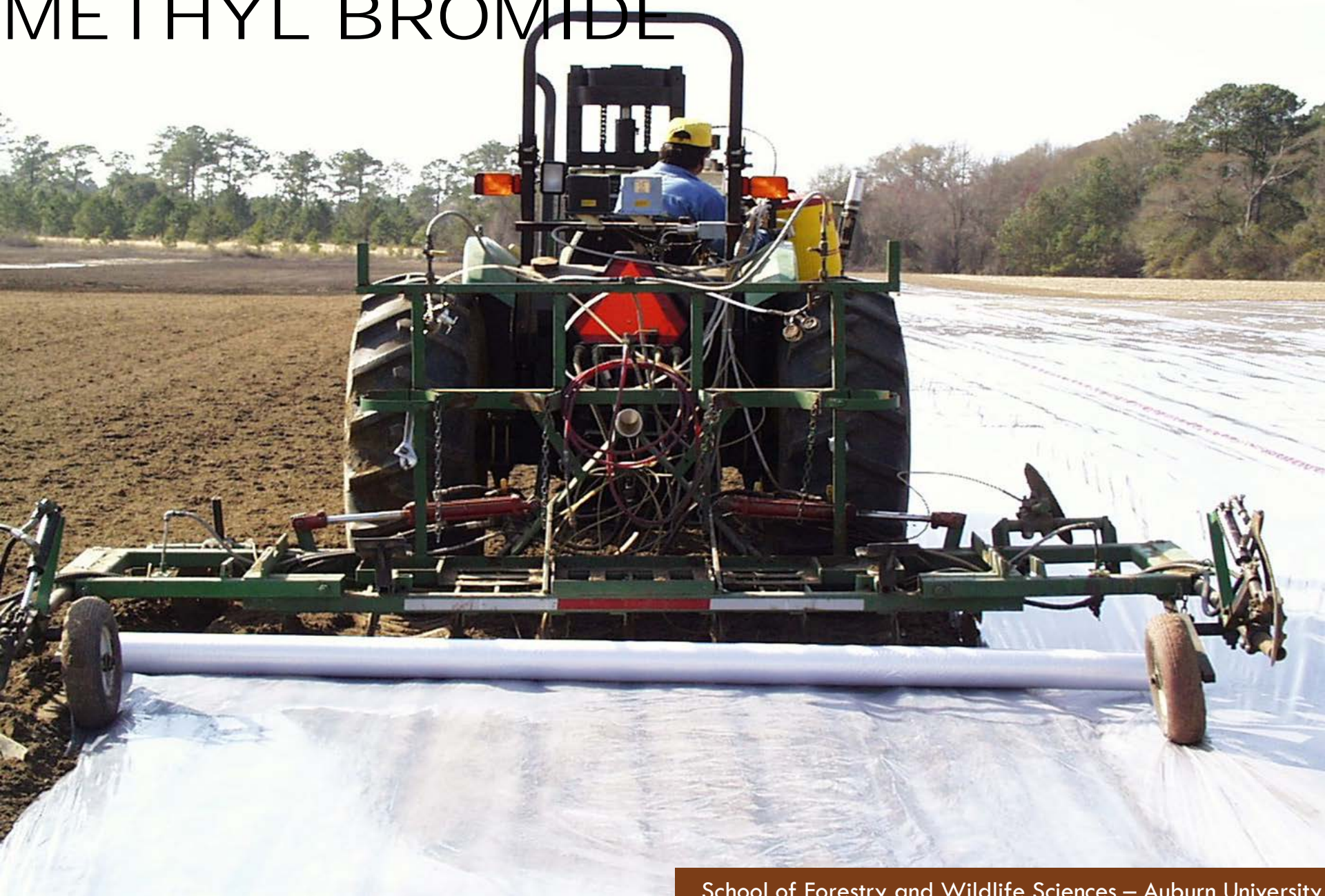
**Rhizoctonia**

**Foliage Blight**





# METHYL BROMIDE







Questions or Comments