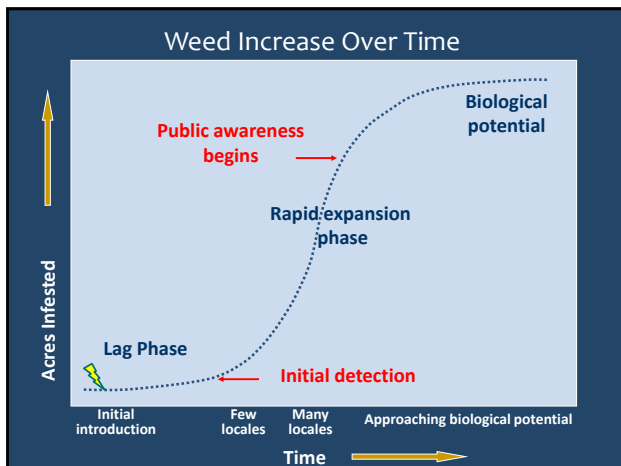




1



2



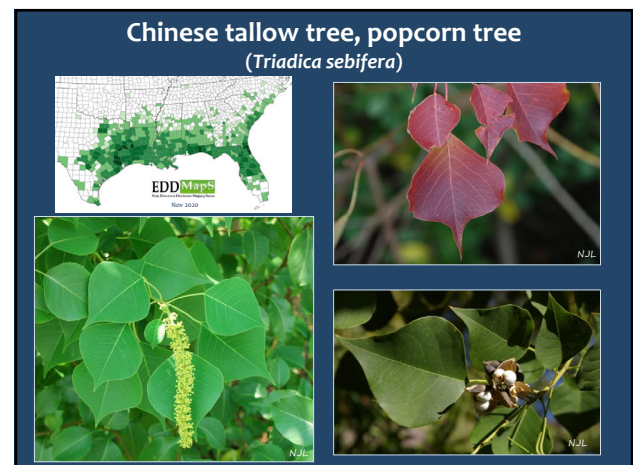
3



4



5



6

Biological control of Chinese tallowtree and air potato



Rodrigo Diaz, Veronica Manrique, Greg Wheeler
Alabama Invasive Plant Council 17th Annual Conference, Auburn University, May 14th, 2019
<https://www.se-eppc.org/alabama/>

FOREST HEALTH
Chinese Tallowtree Biology and Management in Southeastern U.S. Forests
Extension
Management Options for Chinese Tallowtree

<http://southernforesthealth.net/>; www.aces.edu

7

Japanese climbing fern
(*Lygodium japonicum*)




EDDMapS
Nov 2020

8

wild taro (*Colocasia esculenta*)




9

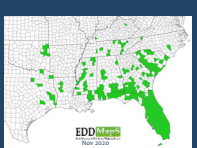


wild taro (*Colocasia esculenta*)





10




tropical soda apple
(*Solanum viarum*)

- broad, shallowly lobed
- densely pubescent, sticky (both sides)
- large prickles on stem and major leaf veins
- 2-6 feet tall

UGA1115037
UGA2734097

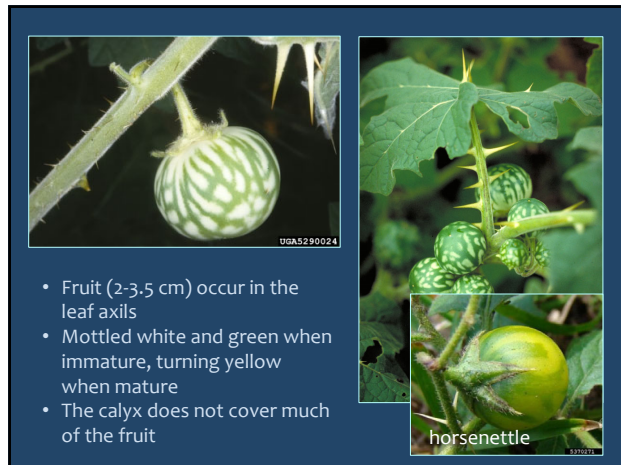
11

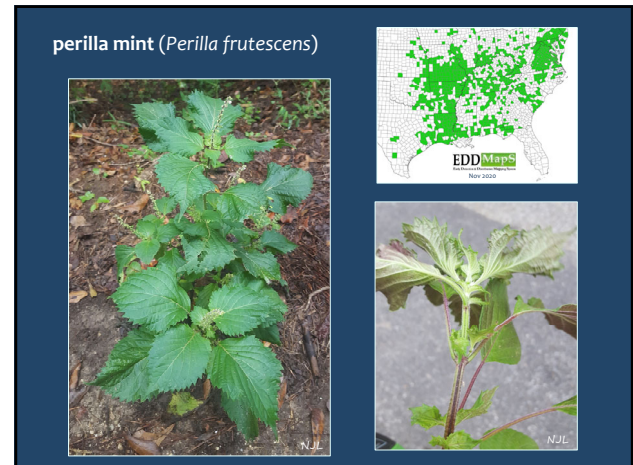
• Tropical soda apple flowers are white and the petals curve backwards

horsenettle
1556350

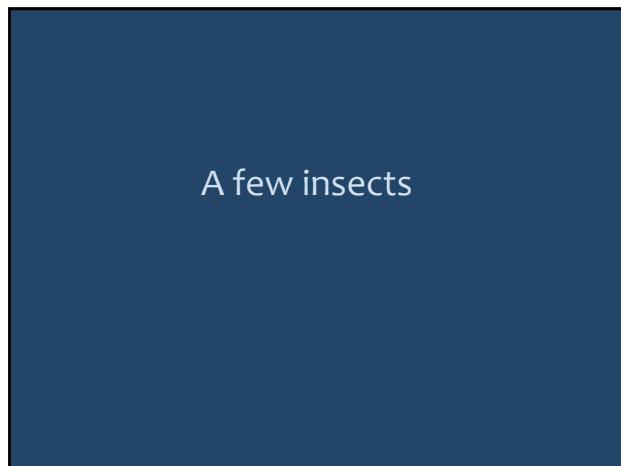
12



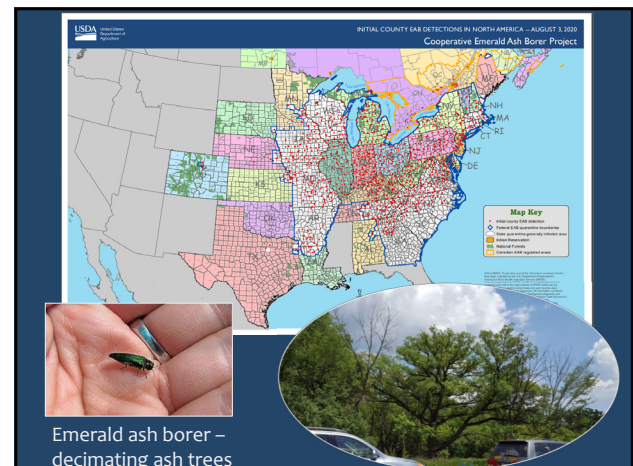
13



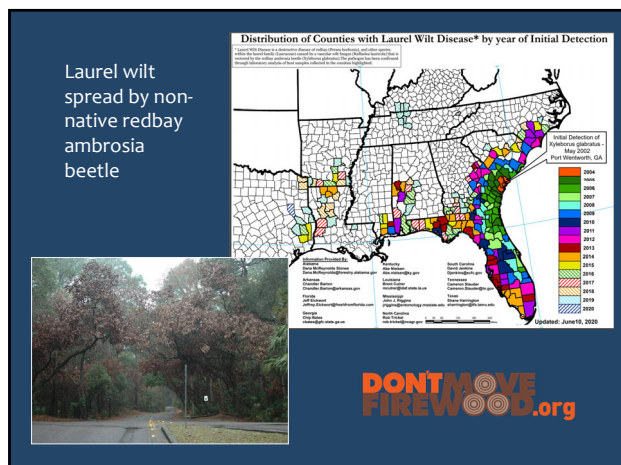
14



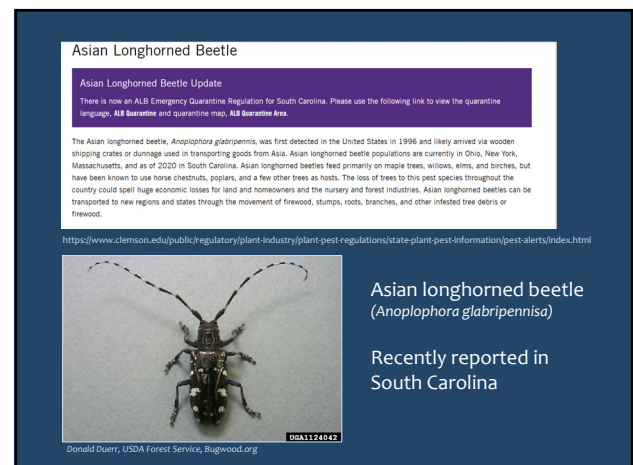
15



16



17



18

