



A comparison of recent graduation rates at Auburn University and its SREB peer institutions places Auburn at the median and second quartile for 2004-2006 reporting years (see Fig 1 for the distribution of completion rates; see Table 1 for the list of peer institutions).

Differences in graduation rate by gender and ethnicity appear across the SREB peer group, including Auburn. Women are more likely than men to graduate (see Fig 2); again, a comparison with peer institutions places Auburn at the median and second quartile. Black students are less likely than students generally to graduate. Auburn's graduation rates for black students are in the second quartile in 2004 and 2005 and in the lowest quartile in 2006 (see Fig 3). Across the SREB, Asian students are more likely to graduate than students generally. However, at Auburn graduation rates for Asian students are lower than for students generally and place in the lowest quartile for 2004 and 2005 and in the second quartile for 2006 (see Fig 4). This brief comparison demonstrates that Auburn does not outperform the middle point for its peers and calls for a more detailed analysis of six-year graduation rates at Auburn.

Fig 1 Graduation rate - Bachelor degree within 6 years, total*

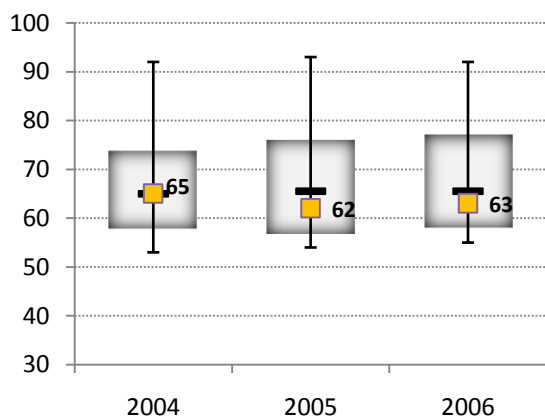


Fig 2 Graduation rate - Bachelor degree within 6 years, women*

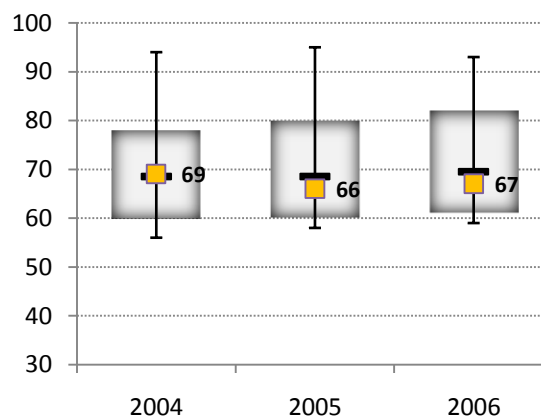


Fig 3 Graduation rate - Bachelor degree within 6 years, Black, non-Hispanic*

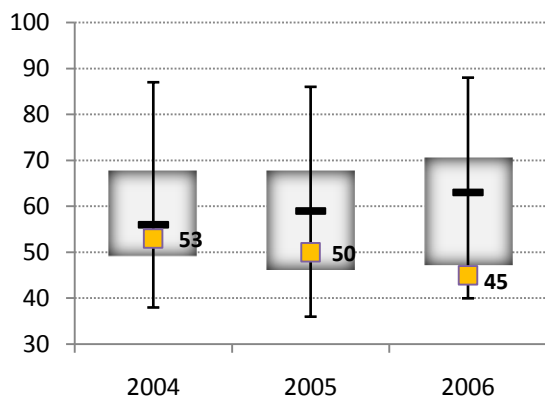
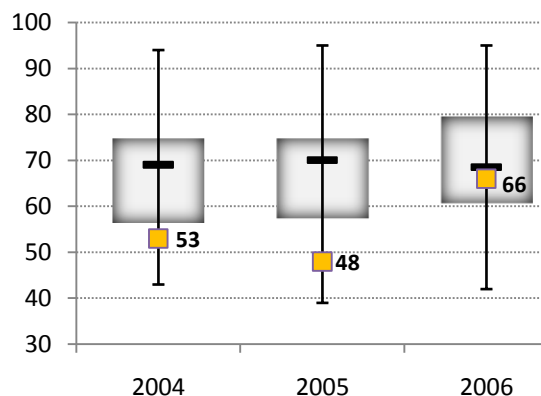


Fig 4 Graduation rate - Bachelor degree within 6 years, Asian or Pacific Islander *



*Source: The Integrated Postsecondary Education Data System (IPEDS) Peer Analysis System

Table 1 SREB Peer institutions

| ID | Institution Name |
|-----------|--|
| 100751 | The University of Alabama |
| 100858 | Auburn University – Main Campus |
| 106397 | University of Arkansas Main Campus |
| 134097 | Florida State University |
| 134130 | University of Florida |
| 139755 | Georgia Institute of Technology-Main Campus |
| 139959 | University of Georgia |
| 157085 | University of Kentucky |
| 159391 | Louisiana State University and Agricultural & Mechanical College |
| 163286 | University of Maryland-College Park |
| 176017 | University of Mississippi Main Campus |
| 176080 | Mississippi State University |
| 199120 | University of North Carolina at Chapel Hill |
| 199193 | North Carolina State University at Raleigh |
| 207388 | Oklahoma State University-Main Campus |
| 207500 | University of Oklahoma Norman Campus |
| 217882 | Clemson University |
| 218663 | University of South Carolina-Columbia |
| 221759 | The University of Tennessee |
| 228723 | Texas A & M University |
| 228778 | The University of Texas at Austin |
| 233921 | Virginia Polytechnic Institute and State University |
| 234076 | University of Virginia-Main Campus |