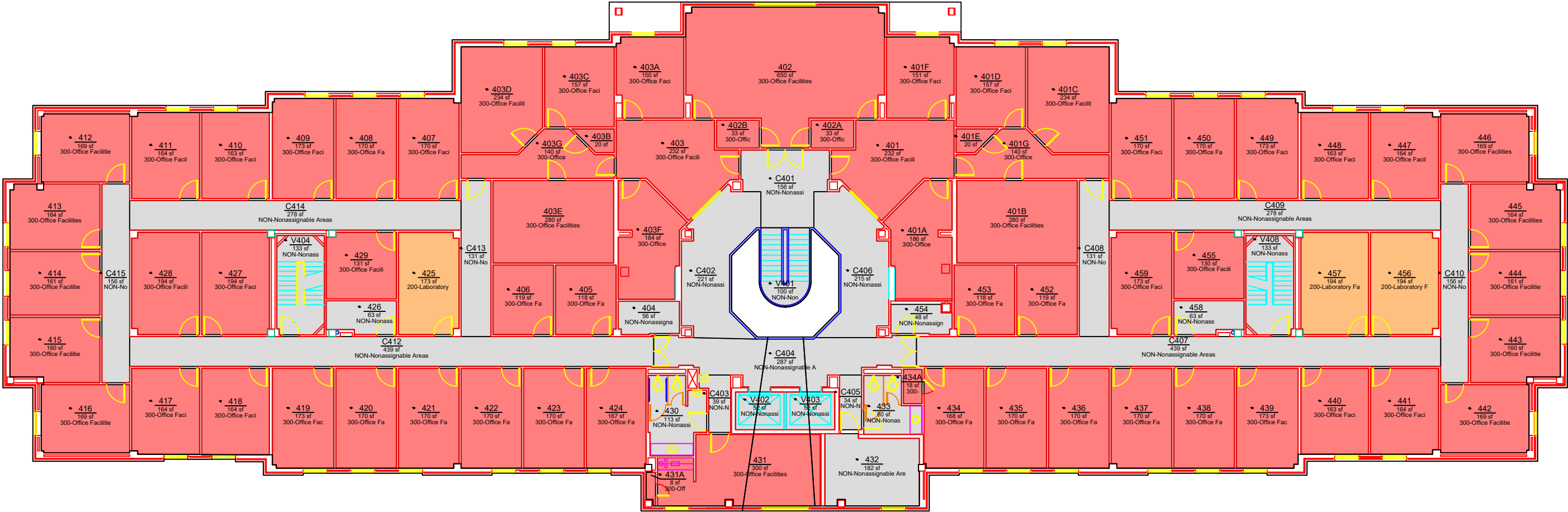


ROOM CATEGORY			
	AREA	QTY	
200-Laboratory Facilities	561	3	
300-Office Facilities	11,157	67	
Non-Assignable Areas	4,035	26	
TOTAL:	15,753	96	
Floor Gross:	17,640		



ROOM	ROOM CATEGORY	ROOM	ROOM CATEGORY	ROOM	ROOM CATEGORY
401	300-Office Facilities	418	300-Office Facilities	448	300-Office Facilities
401A	300-Office Facilities	419	300-Office Facilities	449	300-Office Facilities
401C	300-Office Facilities	420	300-Office Facilities	450	300-Office Facilities
401D	300-Office Facilities	421	300-Office Facilities	451	300-Office Facilities
401E	300-Office Facilities	422	300-Office Facilities	452	300-Office Facilities
401F	300-Office Facilities	423	300-Office Facilities	453	300-Office Facilities
401G	300-Office Facilities	424	300-Office Facilities	454	NON-Nonassignable Areas
402A	300-Office Facilities	425	200-Laboratory Facilities	455	300-Office Facilities
402B	300-Office Facilities	426	NON-Nonassignable Areas	456	200-Laboratory Facilities
403	300-Office Facilities	427	300-Office Facilities	457	200-Laboratory Facilities
403A	300-Office Facilities	428	300-Office Facilities	458	NON-Nonassignable Areas
403B	300-Office Facilities	429	300-Office Facilities	459	300-Office Facilities
403C	300-Office Facilities	430	NON-Nonassignable Areas	460	NON-Nonassignable Areas
403D	300-Office Facilities	431A	300-Office Facilities	461	NON-Nonassignable Areas
403F	300-Office Facilities	432	NON-Nonassignable Areas	462	NON-Nonassignable Areas
403G	300-Office Facilities	433	NON-Nonassignable Areas	463	NON-Nonassignable Areas
404	NON-Nonassignable Areas	434	300-Office Facilities	464	NON-Nonassignable Areas
405	300-Office Facilities	435A	300-Office Facilities	465	NON-Nonassignable Areas
406	300-Office Facilities	435	300-Office Facilities	466	NON-Nonassignable Areas
407	300-Office Facilities	436	300-Office Facilities	467	NON-Nonassignable Areas
408	300-Office Facilities	437	300-Office Facilities	468	NON-Nonassignable Areas
409	300-Office Facilities	438	300-Office Facilities	469	NON-Nonassignable Areas
410	300-Office Facilities	439	300-Office Facilities	470	NON-Nonassignable Areas
411	300-Office Facilities	440	300-Office Facilities	471	NON-Nonassignable Areas
412	300-Office Facilities	441	300-Office Facilities	472	NON-Nonassignable Areas
414	300-Office Facilities	442	300-Office Facilities	473	NON-Nonassignable Areas
415	300-Office Facilities	443	300-Office Facilities	474	NON-Nonassignable Areas
416	300-Office Facilities	444	300-Office Facilities	475	NON-Nonassignable Areas
417	300-Office Facilities	447	300-Office Facilities	476	NON-Nonassignable Areas



Office of the  
University Architect  
Facilities Management  
1161 West Samford Ave., Building 1  
Auburn, AL 36849

ROOM CATEGORY  
Lower Hall  
Level: 04

Building No.: AA\_T0202  
File Name: AA\_T0202\_04  
Last Export: 06/16/2015  
Report Created By: Ellen Doyle  
Report Date: 09/13/2018