

15-150 New Risk
Management-
Parking & Drive
Interruption

Bldg. 1

Bldg. 3

Bldg. 4

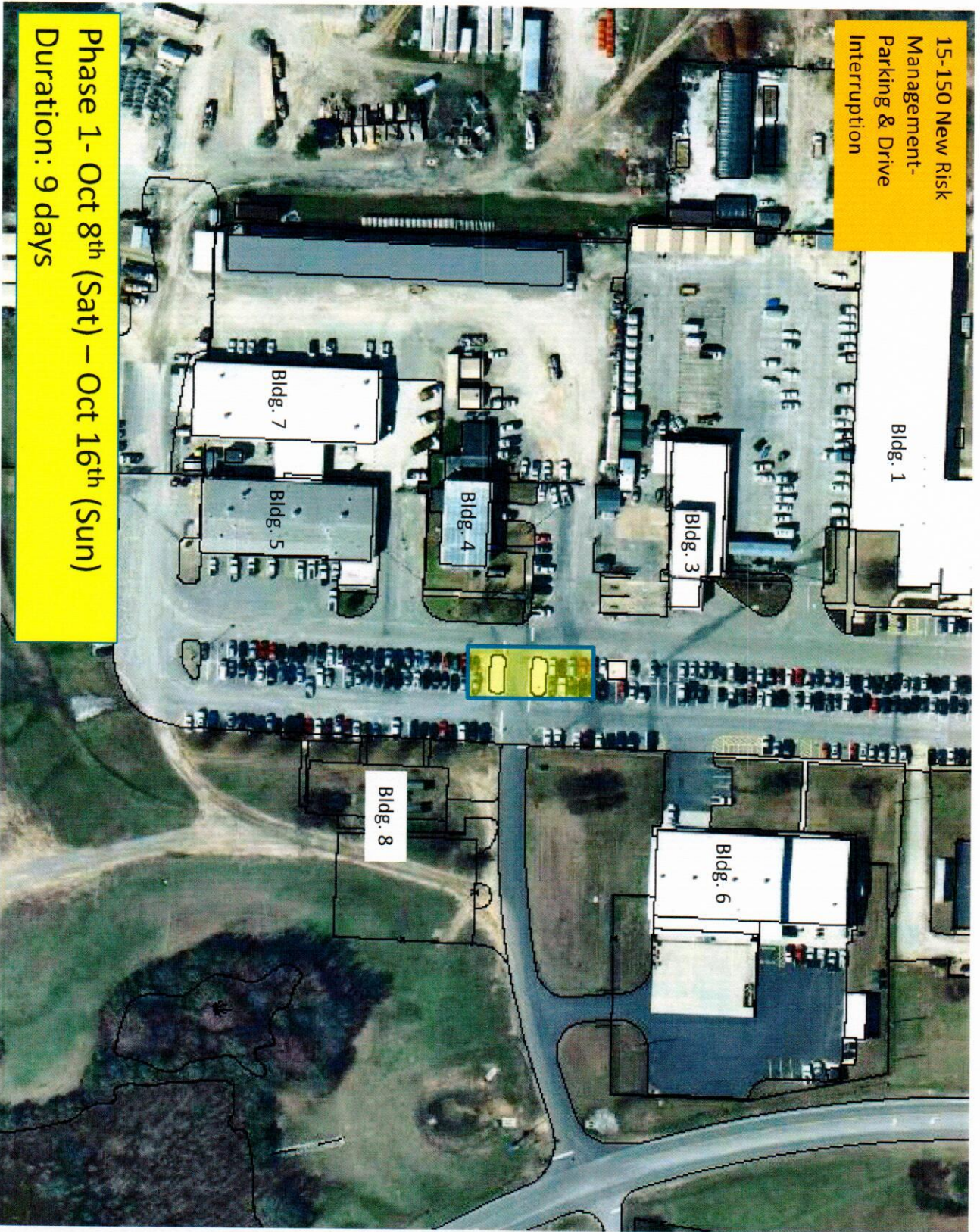
Bldg. 7

Bldg. 5

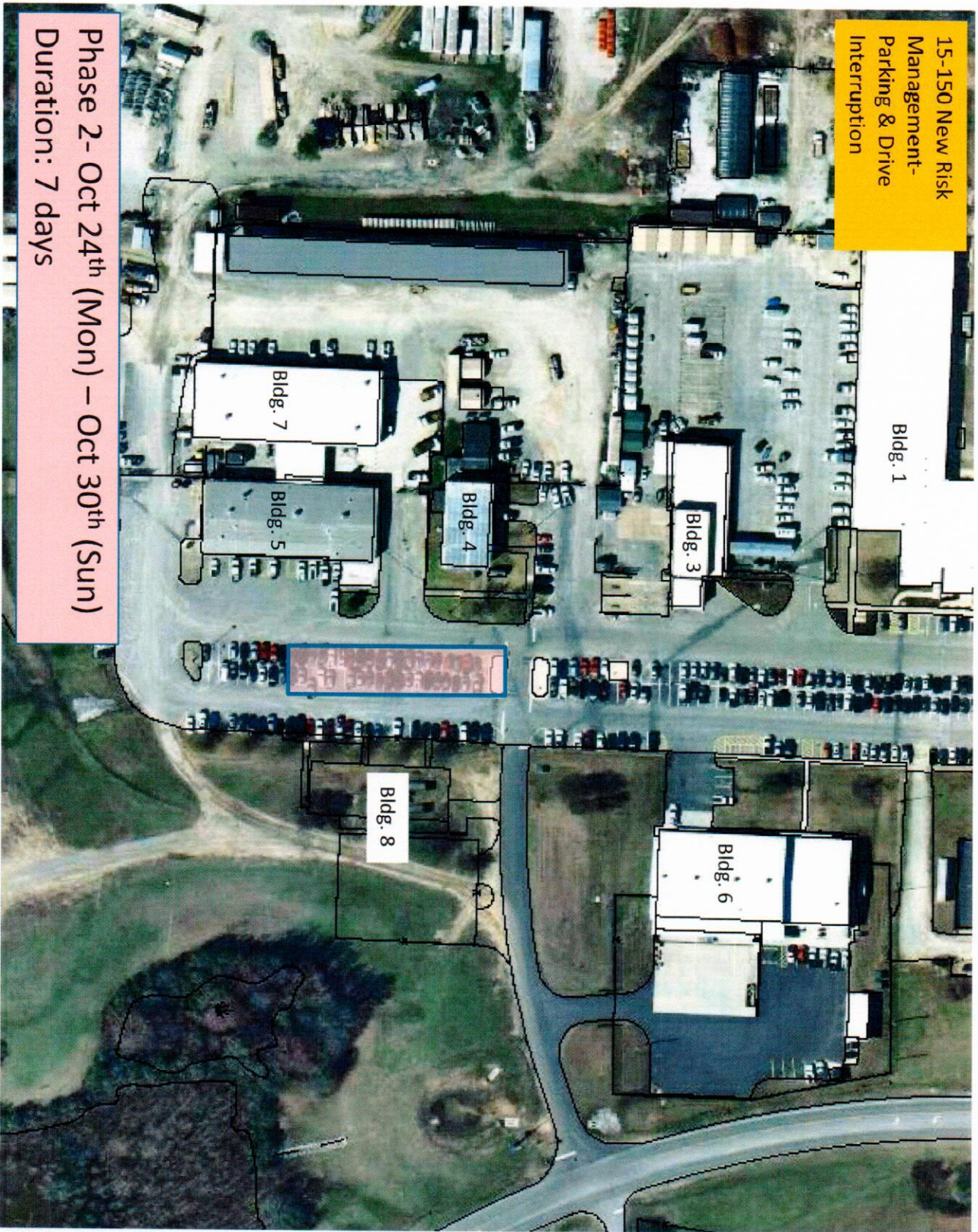
Bldg. 6

Bldg. 8

Phase 1- Oct 8th (Sat) – Oct 16th (Sun)
Duration: 9 days

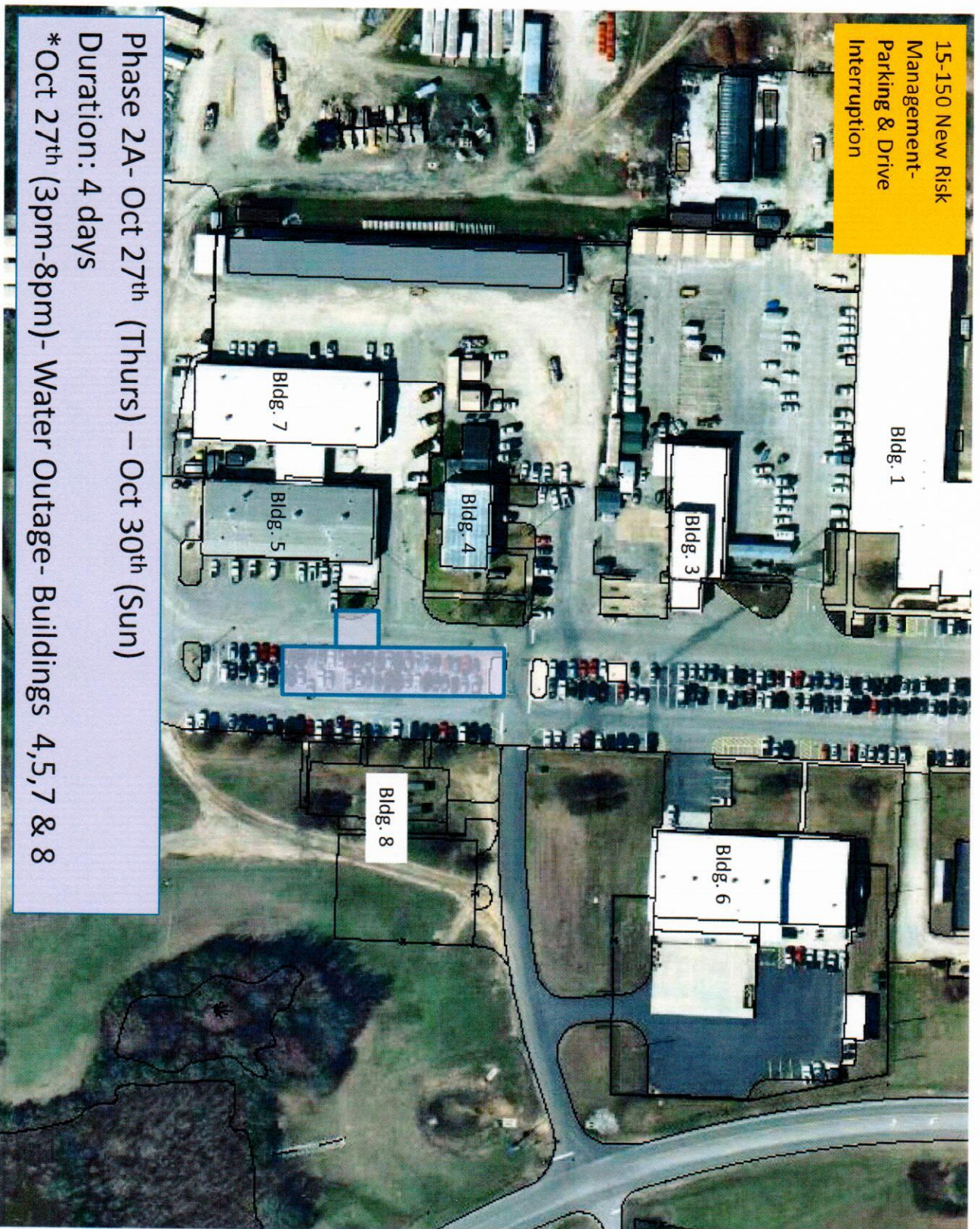


15-150 New Risk
Management-
Parking & Drive
Interruption



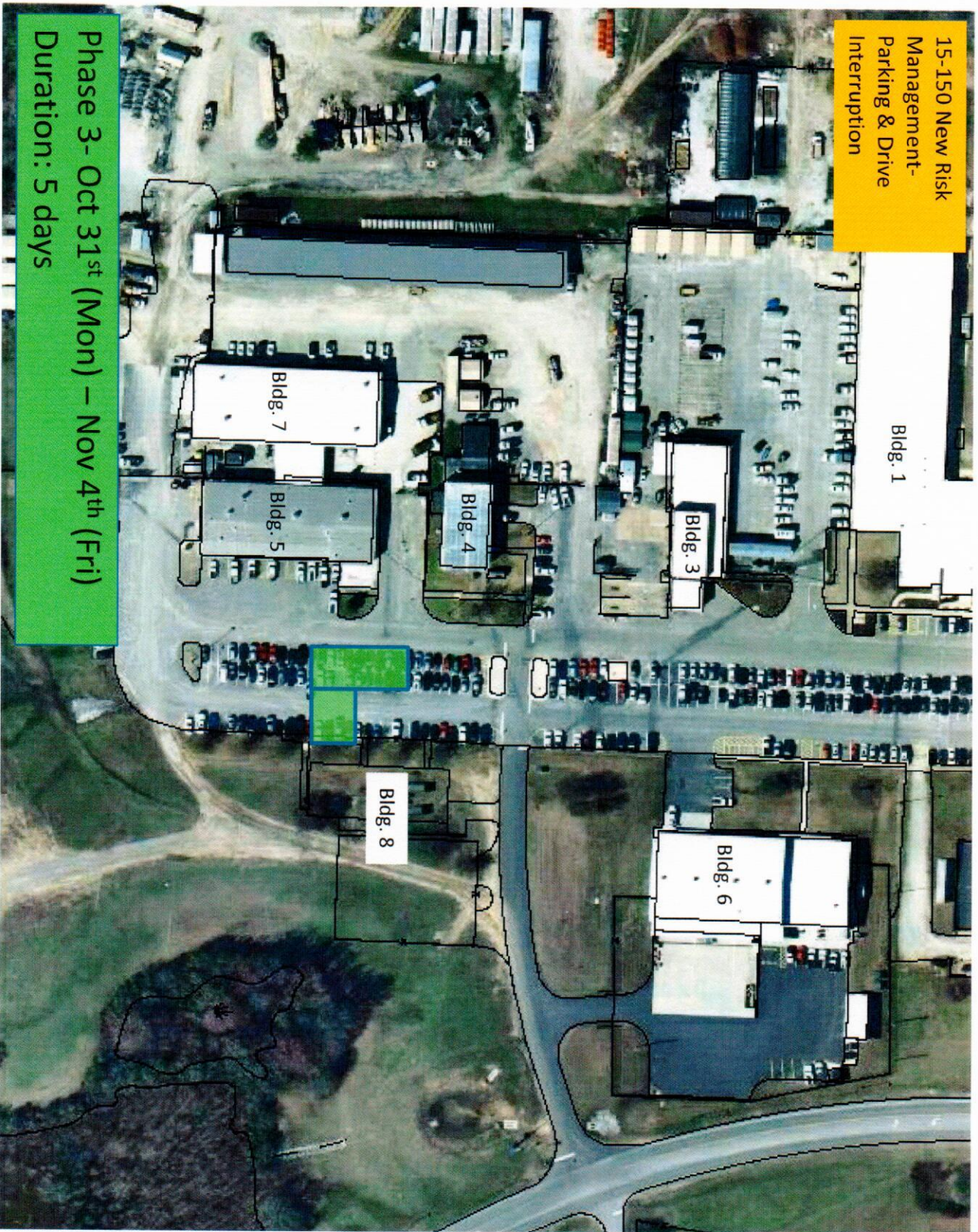
Phase 2 - Oct 24th (Mon) – Oct 30th (Sun)
Duration: 7 days

15-150 New Risk
Management-
Parking & Drive
Interruption



Phase 2A- Oct 27th (Thurs) – Oct 30th (Sun)
Duration: 4 days
*Oct 27th (3pm-8pm) - Water Outage- Buildings 4,5,7 & 8

15-150 New Risk
Management-
Parking & Drive
Interruption



Phase 3 - Oct 31st (Mon) – Nov 4th (Fri)
Duration: 5 days