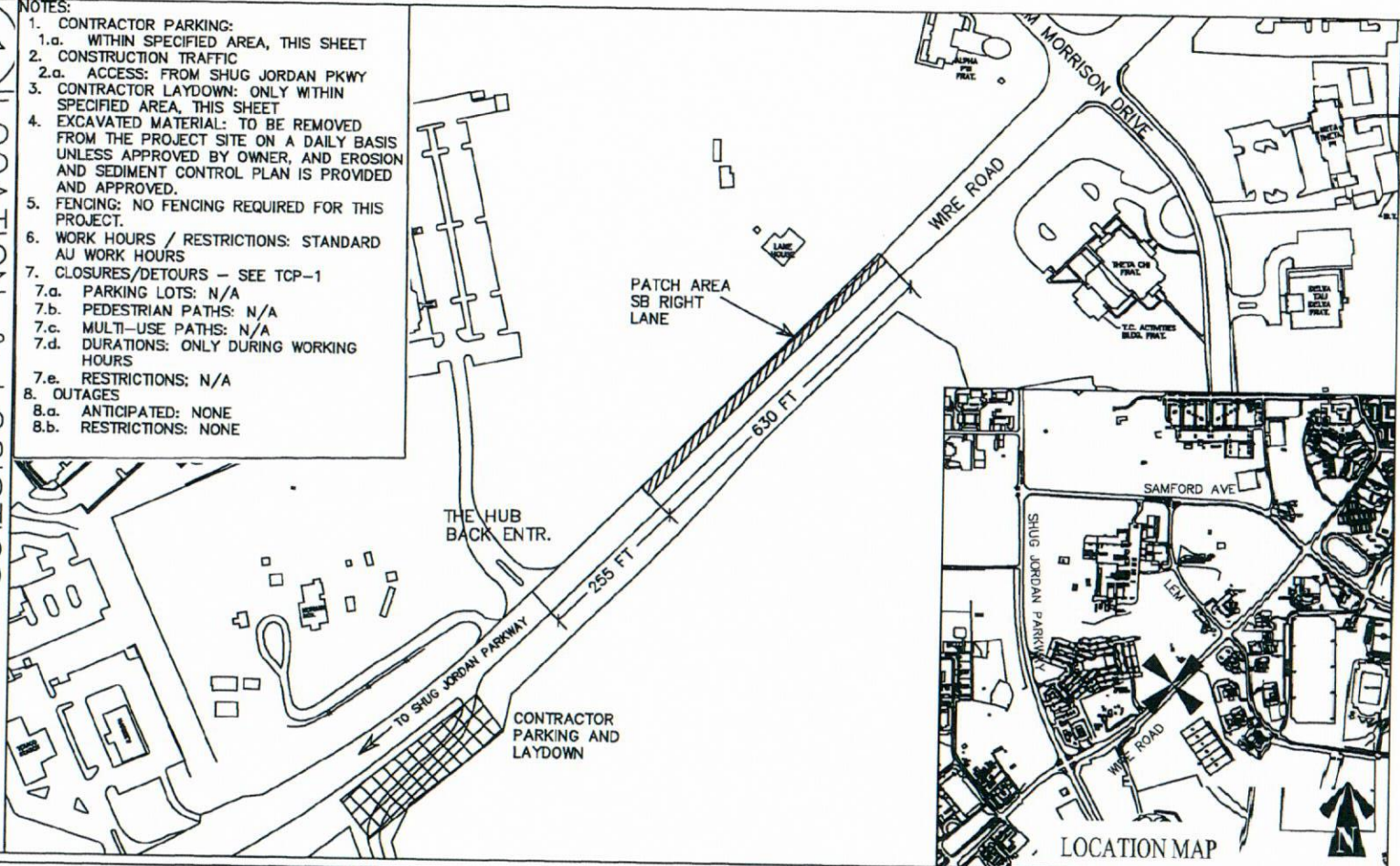


L1.0 SCALE: no scale

1 LOCATION & LOGISTICS

- NOTES:
1. CONTRACTOR PARKING:
 - 1.a. WITHIN SPECIFIED AREA, THIS SHEET
 2. CONSTRUCTION TRAFFIC
 - 2.a. ACCESS: FROM SHUG JORDAN PKWY
 3. CONTRACTOR LAYDOWN: ONLY WITHIN SPECIFIED AREA, THIS SHEET
 4. EXCAVATED MATERIAL: TO BE REMOVED FROM THE PROJECT SITE ON A DAILY BASIS UNLESS APPROVED BY OWNER, AND EROSION AND SEDIMENT CONTROL PLAN IS PROVIDED AND APPROVED.
 5. FENCING: NO FENCING REQUIRED FOR THIS PROJECT.
 6. WORK HOURS / RESTRICTIONS: STANDARD AU WORK HOURS
 7. CLOSURES/DETOURS - SEE TCP-1
 - 7.a. PARKING LOTS: N/A
 - 7.b. PEDESTRIAN PATHS: N/A
 - 7.c. MULTI-USE PATHS: N/A
 - 7.d. DURATIONS: ONLY DURING WORKING HOURS
 - 7.e. RESTRICTIONS: N/A
 8. OUTAGES
 - 8.a. ANTICIPATED: NONE
 - 8.b. RESTRICTIONS: NONE



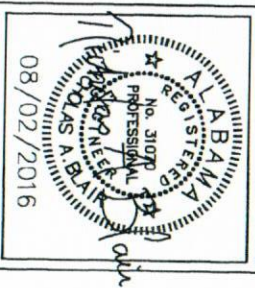
L1.0

SHEET

1 of 4

Rev	Phase	Date
0	BID	08/02/2016

Wire Road
Repair Roadway South of Lem Morrison
Project Number 16-064

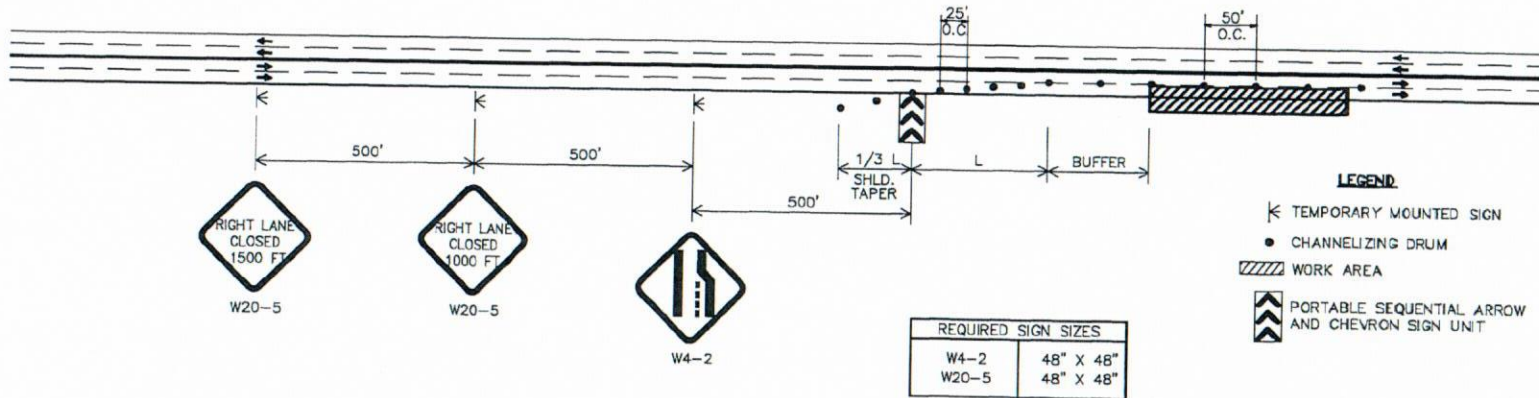


AUBURN
UNIVERSITY

Facilities Division
1161 West Sanford Avenue
Auburn University, AL 36849
Phone: (334) 844-4810
Fax: (334) 844-9458

Safety is our first priority. Thank you for your safety.

TYPICAL SCHEME FOR OUTSIDE LANE CLOSURE



GENERAL NOTES

- ALL SIGNS SHALL BE TEMPORARY MOUNTED AS SHOWN, UNLESS THE WORK PERIOD EXCEEDS FOUR (4) DAYS. IN SUCH CASES, THE SIGNS SHALL BE POST MOUNTED.

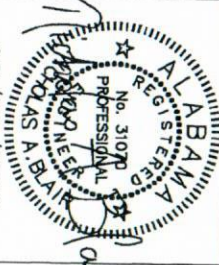
TCP-1

SHEET

4 of 4

Wire Road
Repair Roadway South of Lem Morrison
Project Number 16-064

08/02/2016



Safety is our first priority. Think Safety. Act Safely.

Fax: (334) 844-9458

Phone: (334) 844-4810

Auburn University, AL 36849

1161 West Sanford Avenue

Facilities Division

AUBURN UNIVERSITY

AUBURN

