

- ✓ 100,000 IT products
- ✓ Custom systems and servers
- ✓ Network design and installation
- ✓ Software licensing
- ✓ 24/7 online purchasing  
via Auburn University's special  
GovConnection eProcurement account

**Log in today!**  
[www.auburn.edu/oit](http://www.auburn.edu/oit)

desktop  
**SPECIALS!**

**NetVista M42 Desktop**  
IBM #8305W2P

- 2.4GHz P4 • 256MB DDR SDRAM
- 40GB hard drive • CD-ROM
- NIC Card • Win XP Pro

**NetVista M42 Desktop**  
IBM #8305W2N

- 2.4GHz P4 • 512MB DDR SDRAM
- 80GB hard drive • CD-RW/DVD-ROM
- Win XP Pro **\$685.57** #462053



**M42**  
Starting at  
**\$592.78**  
#462056  
Monitor sold  
separately.

notebook  
**SPECIALS!**

**ThinkPad R40**  
Starting at  
**\$1181**  
#462054

**ThinkPad R40**  
IBM #2724AU4

- 1.3GHz P4 • 256MB DDR SDRAM
- 20GB HD • 14.1" TFT Display
- CD-ROM • Win XP Pro
- 56K Modem & NIC Card

**ThinkPad R40 IBM #2683AU4**

- 2.4GHz P4 • 512MB DDR SDRAM • 60GB HD • 15" TFT Display
- CD-RW/DVD-ROM • NIC Card & 56K Modem • Win XP Pro
- \$1422.24** #462055

**ThinkPad Removable Diskette Drive**  
IBM #08K9603 **\$45.80** #221652



[govconnection.com/holidaypromotion](http://govconnection.com/holidaypromotion)

**Holiday  
Deals!**

# AUBURN UNIVERSITY

## GovConnection Technology Update –Winter 2003

### Auburn University Purchasers:

GovConnection is proud to be the authorized provider of IBM systems and HP printers to Auburn University. Our dedicated Auburn team will help you get the right models and configurations for your network.

### *Your Full-Service Authorized IBM system and HP Printer Provider*

Our in-house staff of network engineers and on-site service partners can also provide you with advanced IT services such as network/storage design, technical assistance, and installation. Give us a call today... and let us take care of everything!



### Meet Your GovConnection Team

GovConnection Account Manager  
Auburn University Primary Contact  
Rob Mitchell: 800-800-0019 x33192  
rmitchell@govconnection.com

GovConnection Business Development Manager  
Auburn University Field Contact  
Kristy Rieth:  
Office: 800-986-2311 Mobile: 603-533-1350  
krieth@govconnection.com

IBM Client Representative  
Terry Groulx: 770-863-3297  
tgroulx@us.ibm.com

IBM Client Representative  
Jerry Daniel: 901-755-3383  
danieljn@us.ibm.com

IBM PC Specialist PC & Laptop Specialist  
for Public Sector  
Stephanie DeBenedictis:  
Office: 404-487-1849 Mobile: 678-525-9828  
stdeb@us.ibm.com

IBM System Engineer PC & Laptop Engineer  
Bruce Hall: 407-849-9394  
hallbo@us.ibm.com

IBM X Series Specialist Wintel Server Specialist  
Terence Pernell:  
Office: 404-487-2591 Mobile: 770-231-4718  
tpernell@us.ibm.com



See next page to learn more about  
IBM ThinkVantage Technologies



*We're experts at serving higher education.*

Hundreds of schools across the country rely on us, including:

- Auburn University
- Harvard University
- Johns Hopkins
- New York University
- North Carolina A&T State University
- Seton Hall
- Tulane University
- University of Florida
- University of Hawaii
- University of Notre Dame
- University of Pennsylvania

*we're here to help  
call us today!*

**GovConnection Account Manager  
Auburn University Primary Contact**  
Rob Mitchell: 800-800-0019 x33192  
rmitchell@govconnection.com

**GovConnection Business  
Development Manager  
Auburn University Field Contact**  
Kristy Rieth:  
Office: 800-986-2311  
Mobile: 603-533-1350  
krieth@govconnection.com



### IBM is committed to warranty performance

With 6 major distribution hubs, 145 parts centers, and more than 2500 support experts, IBM has the muscle and commitment to keep your systems up and running like no other manufacturer. It's as simple as that.

IBM stocks parts for all IBM PC products for warranty periods and beyond. They understand that image stability is critically tied to the availability of correct hardware replacement parts, and that this image stability is an important part of IBM's value within an enterprise.

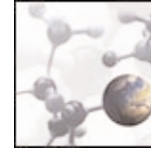
For more information on IBM Warranty Support programs, please request a copy of the IBM Warranty Support guide from GovConnection.

## IBM ThinkVantage



### IBM Embedded Security Subsystem

Available only from IBM, this unique combination of hardware and software creates the most secure industry-standard PC. (Select systems.)



### IBM Access Connections

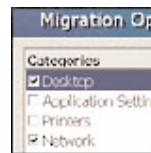
Access Connections automatically detects wireless LANs and reconfigures settings to the highest possible connection speed, so you can simply keep working.

*Take a look at these IBM exclusive technologies that will help you manage your IT system more cost-effectively.*



### IBM Rapid Restore PC

This one-button recover and restore solution helps reduce costs, protect data, and minimize downtime by creating a mirror image of the hard disk drive and restoring it quickly and easily.



### System Migration Assistant

System Migration Assistant gets your users up and running in a familiar environment with less disruption to productivity. It helps perform mass migration of user files and data during an automated corporate rollout of new IBM PCs.



### Access IBM

Access IBM gives you fingertip access to system details, online software updates, support, and automated help solutions.

### IBM Director 4.1

xSeries servers include IBM Director, a comprehensive management application that lets you view, monitor and control your systems from its easy-to-use Web interface.