



AUBURN UNIVERSITY  
OFFICE OF THE PRESIDENT

May 23, 2017

**MEMORANDUM TO:** Board of Trustees

**SUBJECT:** June 8-9, 2017 Board of Trustees Workshop and Meeting

Enclosed are materials that comprise the proposed agenda for the Thursday, June 8 workshop and the Friday, June 9, 2017 meeting of the Board of Trustees. Listed below is the tentative schedule; times and locations that are subject to adjustment, depending on length of individual meetings.

Thursday, June 8, 2017

2:00 p.m. Workshop (**President's Office Board Room, 107 Samford Hall**)

Friday, June 9, 2017 (**Ballroom B-Marquee, AU Hotel and Conference Center**)

8:30 a.m. Property and Facilities Committee

9:00 a.m. Academic Affairs Committee

9:15 a.m. Finance Committee

9:30 a.m. Audit and Compliance Committee

9:45 a.m. Executive Committee

9:50 a.m. Trustee Reports

10:00 a.m. Regular Meeting of the Board of Trustees (Ballroom B-Marquee)

**(Proposed Executive Session – Terrace Room-Marquee, AU Hotel)**

10:30 a.m. Reconvened Meeting of the Board of Trustees (Ballroom B-Marquee, AU Hotel and Conference Center)

11:15 a.m. Brunch (Ballroom A-Marquee, AU Hotel)

We appreciate all that you do for Auburn University and look forward to seeing you on Thursday, June 8, 2017 and Friday June 9, 2017. Please call me, if you have questions regarding the agenda. Also, please let Grant Davis, Sherri Williams, or me know if you need assistance with travel and/or lodging arrangements.

Sincerely,



Jay Gogue  
President

JG/smw

Enclosure

c: President's Cabinet (w/encl.)

Mr. Grant Davis (w/encl.), AL 36849-5113; Telephone: 334-844-4650; Fax: 334-844-6179

**SCHEDULE & AGENDA  
AUBURN UNIVERSITY BOARD OF TRUSTEES  
BALLROOM B-MARQUEE  
AU HOTEL AND CONFERENCE CENTER, AUBURN UNIVERSITY**

**THURSDAY, JUNE 8, 2017**

- I. 2:00 p.m. - Workshop (President's Office Board Room, 107 Samford Hall)

**FRIDAY, JUNE 9, 2017**

- I. Meetings (Ballroom B-Marquee, AU Hotel and Conference Center)

(Meetings will begin at 8:30 a.m. - - all other meetings are subject to change in starting time, depending upon the length of individual meetings.)

- A. Property and Facilities Committee/Chairperson Roberts/8:30 a.m.

**Project Approvals:**

1. Campus Utility System Expansion Electrical Distribution Improvements, Final Project Approval (Dan King/Jim Carroll)

**Approval of Real Estate Transactions:**

2. Woodfield Drive Traffic Light Easement (Dan King/Mark Stirling)
3. Gulf Shores Education Center Lease (Dan King/Mark Stirling)

**Informational Reports:**

4. Real Estate Holdings Annual Report (Dan King/Mark Stirling): *For Information Only*
5. Status Updates: *For Information Only*
  - a. Current Status of New Construction/Renovation/Infrastructure Projects with Budgets of \$1,000,000 and Greater
  - b. Project Status Report

- B. Academic Affairs Committee/Chairperson Newton/9:00 a.m.

1. Proposed Degree Renamings in the College of Agriculture (Tim Boosinger/Paul Patterson)
2. Proposed Placement on Inactive Status of the Master of Integrated Design and Construction (Tim Boosinger/Vini Nathan)

- C. Finance Committee/Chairperson Harbert/9:15 a.m.

1. Proposed Changes in Base Operating Budgets and Guidelines for Fiscal Year 2017-2018 (Kelli Shomaker)

- D. Audit and Compliance Committee/Chairperson Dumas/9:30 a.m.

1. Approval of Independent Auditors for Fiscal Year Ended September 30, 2017 (Kelli Shomaker)

2. Receipt of Code of Ethics Compliance Documents (Bob Dumas)

E. Executive Committee/Chairperson DeMaioribus/9:45 a.m.

1. Election of Officers (Charles McCrary)
2. Proposed Awards and Namings (Mike DeMaioribus)

F. Trustee Reports/9:50 a.m.

1. Academic Affairs Committee/Sarah Newton, Chair
2. Agriculture and Natural Resources Committee/Jimmy Sanford, Chair
3. Audit and Compliance Committee/Bob Dumas, Chair
4. AUM Committee/Clark Sahlie, Chair
5. Executive Committee/Mike DeMaioribus, Chair
6. Finance Committee/Raymond Harbert, Chair
7. Governmental Affairs Committee/Jimmy Rane, Chair
8. Institutional Advancement Committee (Development and AU Foundation)/Wayne Smith, Chair
9. Property and Facilities Committee/B.T. Roberts, Chair
10. Research and Technology Committee (Economic Development)/Jim Pratt, Chair
11. Student Affairs Committee/ Elizabeth Huntley, Chair
12. Alumni/Clark Sahlie, Lead Trustee
13. Athletics/Gaines Lanier, Lead Trustee
14. Legal/Elizabeth Huntley, Lead Trustee

II. REGULAR MEETING OF THE BOARD OF TRUSTEES/10:00 A.M.  
(Ballroom B-Marquee, AU Hotel and Conference Center)

(Proposed Executive Session – Terrace Room-Marquee, AU Hotel and Conference Center)

III. RECONVENED MEETING OF THE BOARD OF TRUSTEES/10:30 A.M.  
(Ballroom B-Marquee, AU Hotel and Conference Center)

(Agenda items are determined primarily based upon committee actions.)

11:15 A.M. - Brunch (Ballroom A-Marquee, AU Hotel and Conference Center)

## RESOLUTION

### APPROVAL OF MINUTES

WHEREAS, copies of the minutes of the Reconvened Meeting on Friday, April 7, 2017, have been distributed to all members of this Board of Trustees for review.

NOW, THEREFORE, BE IT RESOLVED by the Board of Trustees that the minutes of its Friday, April 7, 2017 meeting are hereby approved as distributed.



## RESOLUTION

### AWARDING OF DEGREES

WHEREAS, Auburn University confers appropriate degrees upon those individuals who have completed requirements previously approved by this Board of Trustees and stated in University Catalogs.

NOW, THEREFORE, BE IT RESOLVED as follows:

1. That all degrees to be awarded by the faculty of Auburn University and Auburn University at Montgomery at the end of Summer Semester 2017, complying with the requirements heretofore established by the Board of Trustees, be and the same are hereby approved.
2. That a list of the degrees awarded be filed in the Book of Exhibits and made a part of this resolution and of these minutes.

## EXECUTIVE SUMMARIES

JUNE 9, 2017

### A. Property And Facilities Committee

#### 1. Campus Utility System Expansion Electrical Distribution Improvements: Final Project Approval

Project Summary: The Campus Utility System Expansion Electrical Distribution Improvements project proposes to improve the reliability and redundancy of the campus electrical distribution system by relocating the 46kV (46,000 volt) overhead transmission lines along South Donahue Drive and the electrical feeder along Woodfield Drive to the site of the future Performing Arts Center into underground duct banks, and installing a second transformer/switch at the 116kV (116,000 volt) Hemlock Drive Substation. The project construction will be located along South Donahue Drive between Magnolia Avenue and Heisman Drive, along Woodfield Drive between South Donahue Drive and South College Street and at the Hemlock Drive Substation located on Hemlock Drive, north of West Samford Avenue.

Requested Action: It is requested that the Board of Trustees adopt a resolution to approve the project program, site, budget, funding plan, and schematic design for the Campus Utility System Expansion Electrical Distribution Improvements project.

The estimated total cost of the project is \$6.5 million, to be financed by University General Funds.

Previous Approvals: At its previous meeting on June 5, 2015, the Board of Trustees adopted a resolution that approved the initiation of the Campus Utility System Expansion project, and at its meeting on September 25, 2015, the Board of Trustees approved the utility system engineer selection for the project.

Project Execution Schedule: Summer 2017 – Summer 2018

#### 2. Woodfield Drive Traffic Light Easement: Approval of Easement

Project Summary: The City of Auburn has requested Auburn University's assistance in improving the intersection at South College Street and Woodfield Drive to install new traffic signals, decorative poles and equipment at the intersection. The Woodfield Drive Traffic Light Easement project will be an improvement of the intersection and is in the best interest of Auburn University and the safety of its students, faculty, and staff. The proposed improvements require use of approximately 0.01 acres of Auburn University property on the west side of South College Street

Requested Action: It is requested that the Board of Trustees adopt a resolution to approve that Jay Gogue, President, or such person as may be acting as President, be and the same is hereby authorized and empowered to execute an Easement Agreement for the City of Auburn to facilitate the described improvements to the intersection.

Project Execution Schedule: Not Applicable (City of Auburn Project)

**EXECUTIVE SUMMARIES**  
**JUNE 9, 2017**

3. Real Estate Holdings Annual Report

At this time, the Real Estate Holdings Annual Report will be presented.

4. Gulf Shores Education Center Lease

Time will be allocated for review of the Gulf Shores Education Center Lease.

5. Status Updates

- a. Current Status of New Construction/Renovation/Infrastructure Projects with Budgets of \$1,000,000 and Greater
- b. Project Status Report

**B. Academic Affairs Committee**

1. Proposed Degree Renamings in the College of Agriculture

The College of Agriculture is proposing degree renamings for 12 programs in the Department of Animal Sciences, the Department of Crop, Soil and Environmental Sciences, and the School of Fisheries, Aquaculture, and Aquatic Sciences. The proposed renamings align the degree titles with current industry nomenclature, and reflect a greater breadth of topics, practices, and practical approaches necessary for work in the agricultural industries.

2. Proposed Placement on Inactive Status of the Master of Integrated Design and Construction

The McWhorter School of Building Science and the School of Architecture, Planning and Landscape Architecture in the College of Architecture, Design and Construction are proposing the placement of the Master of Integrated Design and Construction on inactive status, effective upon receipt by the Alabama Commission on Higher Education (fall 2017). The degree was established to provide students with a unique degree program that integrates architecture and building science disciplines. To be offered, the program requires equal enrollment of students in both programs to successfully administer. Enrollment among Building Science students has steadily declined due to increases in professional opportunities for entry-level students with Building Science degrees. Placing the program on inactive status allows the college to suspend it for up to five years, enabling the units to determine long-term feasibility.

**EXECUTIVE SUMMARIES**  
**JUNE 9, 2017**

**C. Finance Committee**

1. Proposed Changes in Base Operating Budgets and Guidelines for Fiscal Year 2017-2018

Time will be allocated for discussion of the changes in the base operating budgets and guidelines for Fiscal Year 2017-2018.

**D. Audit and Compliance Committee**

1. Approval of Independent Auditors for Fiscal year Ended September 30, 2017

A request is before the Board of Trustees to consider appointing PricewaterhouseCoopers to audit the University's financial statements and to conduct the federally required A-133 Audit.

2. Receipt of Code of Ethics Compliance Documents

Time will be allocated to report on the receipt of the 2016-2017 Code of Ethics Compliance Documents.

**E. Executive Committee**

1. Election of Officers

Time will be allocated for election of the President Pro Tempore of the University Board of Trustees.

2. Proposed Awards and Namings

Time will be allocated for discussion of any awards or namings.

PROPERTY AND FACILITIES COMMITTEE  
RESOLUTION  
CAMPUS UTILITY SYSTEM EXPANSION  
ELECTRICAL DISTRIBUTION IMPROVEMENTS  
FINAL PROJECT APPROVAL

WHEREAS, at its previous meeting on June 5, 2015, the Board of Trustees adopted a resolution that approved the initiation of the Campus Utility System Expansion project, and at its meeting on September 25, 2015, the Board of Trustees approved the utility system engineer selection for the project; and

WHEREAS, the intent of this project is to ensure that Auburn University has sufficient utility system capacity to support campus requirements over the next 10-20 years; and

WHEREAS, the project team has recommended that Campus Utility System Expansion project be split into two projects:

- Campus Utility System Expansion – Electrical Distribution Improvements
- Campus Utility System Expansion – New Chilled Water Plant; and

WHEREAS, the project proposes to improve the reliability and redundancy of the campus electrical distribution system by relocating the 46kV (46,000 volt) overhead transmission lines along South Donahue Drive and the electrical feeder along Woodfield Drive to the site of the future Performing Arts Center into underground duct banks, and installing a second transformer/switch at the 116kV (116,000 volt) Hemlock Drive Substation; and

WHEREAS, the estimated total cost for the project is \$6.5 million, to be financed by University General Funds; and

WHEREAS, the project construction will be located along South Donahue Drive between Magnolia Avenue and Heisman Drive, along Woodfield Drive between South Donahue Drive and South College Street and at the Hemlock Drive Substation located on Hemlock Drive, north of West Samford Avenue.

NOW, THEREFORE, BE IT RESOLVED by the Board of Trustees of Auburn University that the Campus Utility System Expansion – Electrical Distribution Improvements project is approved and that Jay Gogue, President, or such other person as may be acting as President, be and the same is hereby authorized and empowered to:

1. Establish a budget for the Campus Utility System Expansion – Electrical Distribution Improvements project in the amount of \$6.5 million, to be financed by University General Funds.
2. Direct the consultants to complete the required plans for the project.
3. Solicit bids and award a contract for construction conditioned upon the lowest responsible and responsive bid being consistent with the project budget.



---

**TO:** JAY GOGUE, President  
**THROUGH:** DONALD L. LARGE, Executive Vice President  
**FROM:** DAN KING, Associate Vice President for Facilities  
**SUBJECT:** PROPERTY AND FACILITIES COMMITTEE  
**CAMPUS UTILITY SYSTEM EXPANSION ELECTRICAL DISTRIBUTION  
IMPROVEMENTS: FINAL PROJECT APPROVAL**  
**DATE:** MAY 18, 2017

---

This memorandum requests the following proposal be presented to the Board of Trustees through the Property and Facilities Committee and included on the agenda at the meeting scheduled for June 9, 2017.

**Proposal:**

Consistent with standing policy, it is proposed that the Campus Utility System Expansion – Electrical Distribution Improvements project be presented to the Board of Trustees through the Property and Facilities Committee for consideration of a resolution that provides final approval of the project. If approved, the resolution would authorize the President to direct Auburn University Facilities Management to complete the project design, solicit bids, and award a contract for construction.

**Review and Consultation:**

At its previous meeting on June 5, 2015, the Board of Trustees adopted a resolution that approved the initiation of the Campus Utility System Expansion project. The intent of this project is to ensure that Auburn University has sufficient utility system capacity and capability to support campus requirements over the next 10-20 years.

At its previous meeting on September 25, 2015, the Board of Trustees adopted a resolution that approved the utility system engineer selection. Since that time, the project team has recommended that Campus Utility System Expansion project be split into two projects:

- Campus Utility System Expansion – Electrical Distribution Improvements
- Campus Utility System Expansion – New Chilled Water Plant

The Electrical Distribution Improvements project will improve the reliability of the two main electrical power feeders into the Auburn campus. The New Chilled Water Plant project will increase the capacity of the chilled water system to meet future campus demand and will be presented to the Board of Trustees at a later date.

The Campus Utility System Expansion – Electrical Distribution Improvements project details are provided below:

- Program Requirements:

1. Relocate the 46kV (46,000 volt) overhead electrical transmission lines along South Donahue Drive, which feed the Duncan Drive Substation, to an underground duct bank. This project will remove seven, 60-foot tall transmission poles and add an additional feed, thus improving system reliability.
2. Relocate overhead distribution lines along Woodfield Drive to an underground duct bank to expand the capacity of electrical distribution system to support the Performing Arts Center project, the future chilled water plant, and future growth of the southeast section of campus.
3. Install a second transformer/switch at the 116kV (116,000 volt) Hemlock Drive Substation and make connections to the Auburn University electrical distribution system. This second transformer/switch will enable the rapid switching of power from one transformer/switch to the other in case of a malfunction. This redundancy will improve system reliability and reduce the risk of a major campus power outage.

- Budget: The estimated total project cost of the Campus Utility System Expansion – Electrical Distribution Improvements project is \$6.5 million, to be financed by University General Funds.

- Project Location: The Campus Utility System Expansion – Electrical Distribution Improvements construction will be completed at three separate locations on campus:

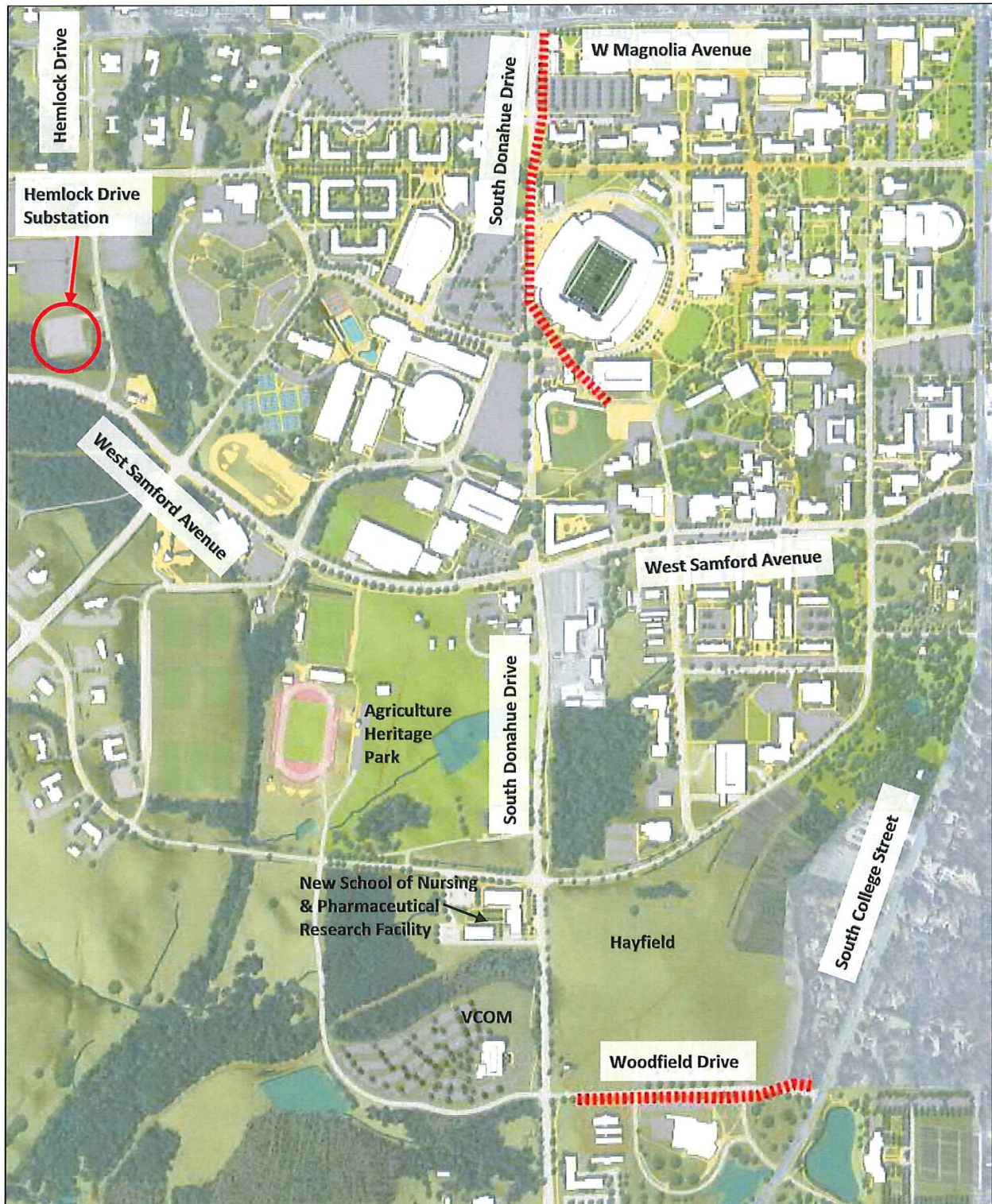
1. South Donahue Drive between Magnolia Avenue and Heisman Drive
2. Woodfield Drive between South Donahue Drive and South College Street
3. Hemlock Drive Substation on Hemlock Drive, north of West Samford Avenue

Refer to Attachment 1 for the site map of the Campus Utility System Expansion – Electrical Distribution Improvements.

If you concur, it is proposed that a resolution providing final approval of the Campus Utility System Expansion – Electrical Distribution Improvements project be presented to the Board of Trustees for consideration at its meeting scheduled for June 9, 2017.



**Attachment 1**  
**Campus Utility System Expansion – Electrical Distribution Improvements**  
**Site Map**



**Campus Utility System Expansion – Electrical Distribution Improvements Site Map**



PROPERTY AND FACILITIES COMMITTEE

RESOLUTION

WOODFIELD DRIVE TRAFFIC LIGHT EASEMENT

WHEREAS, the City of Auburn has requested Auburn University's assistance in improving the intersection at South College Street and Woodfield Drive to install new traffic signals, decorative poles and equipment at the intersection; and

WHEREAS, the Woodfield Drive Traffic Light Easement project will be an improvement of the intersection and is in the best interest of Auburn University and the safety of its students, faculty, and staff; and

WHEREAS, the proposed improvements require use of approximately 0.01 acres of Auburn University property on the west side of South College Street as described in Attachment 1.

NOW, THEREFORE, BE IT RESOLVED by the Board of Trustees of Auburn University that Jay Gogue, President, or such person as may be acting as President, be and the same is hereby authorized and empowered to execute an Easement Agreement for the property described in Attachment A to facilitate those improvements to the intersection. All documents consummating the Easement Agreement shall be reviewed as to form by legal counsel for Auburn University.

# Attachment 1

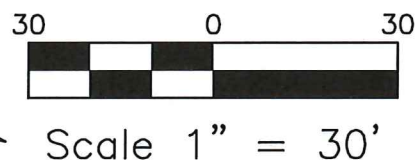
0.01 AC +/- UTILITY EASEMENT

## Woodfield Drive Traffic Light Easement

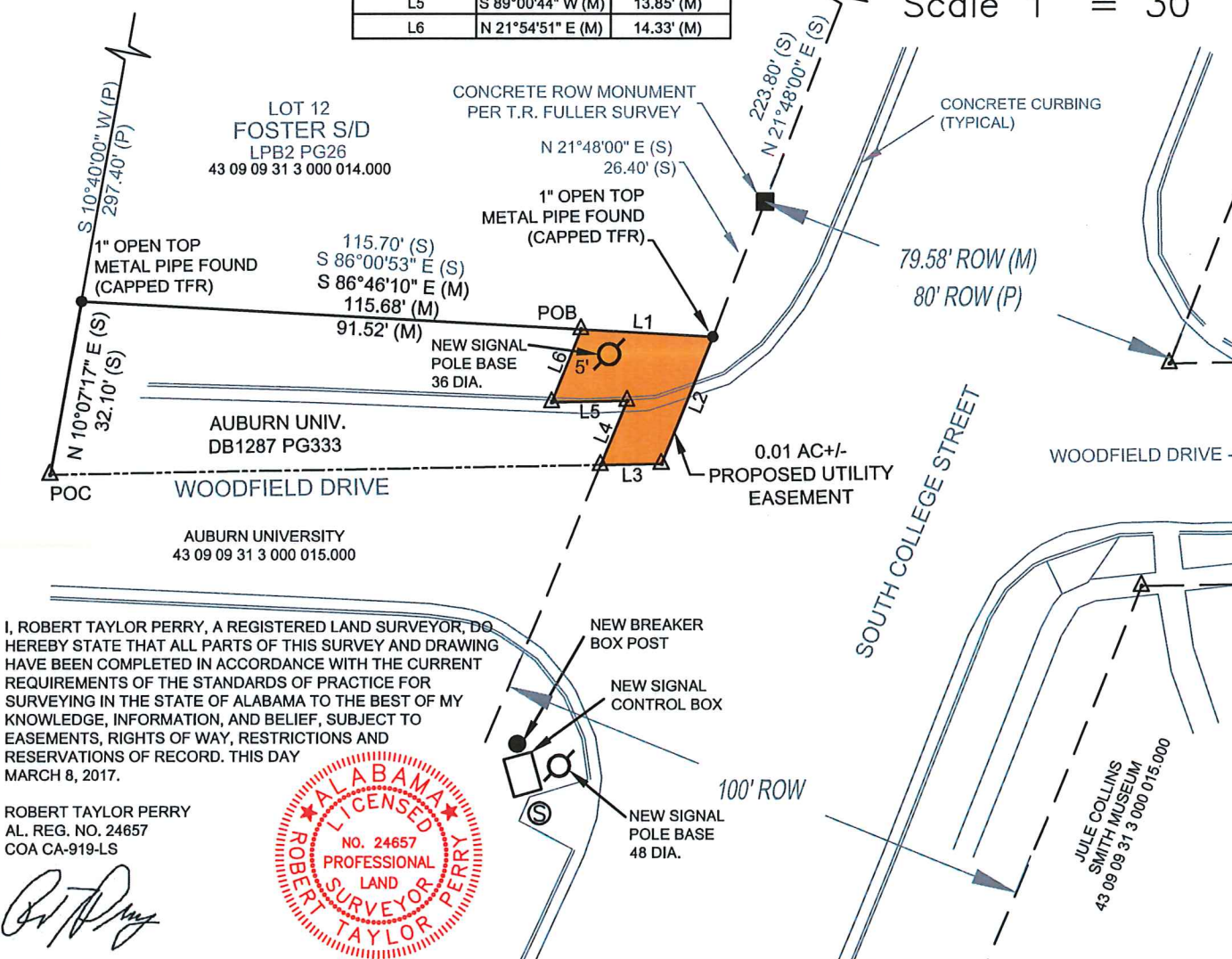
STATE OF ALABAMA  
LEE COUNTY  
CITY OF AUBURN

COMMENCE AT A CALCULATED POINT AT THE SW CORNER OF LOT 12 OF FOSTER S/D, LEE PLAT BOOK 2 PAGE 26; THENCE, AS PER DEED BOOK 1287 PAGE 333, N 10°07'17" E, 32.10' TO A CAPPED 5/8" REBAR FOUND(FULLER); THENCE S 86°46'10" E, 91.52' TO A CALCULATED POINT AT THE POINT OF BEGINNING OF THE SUBJECT 0.01 ACRES +/- UTILITY EASEMENT; THENCE S 86°46'10" E, 24.16' TO A CAPPED 5/8" REBAR FOUND(FULLER) AT THE WESTERLY RIGHT OF WAY OF S. COLLEGE STREET; THENCE ALONG SAID WESTERLY RIGHT OF WAY S 21°54'18" W, 25.00' TO A CALCULATED POINT; THENCE LEAVING SAID WESTERLY RIGHT OF WAY S 89°00'44" W, 11.12' TO A CALCULATED POINT; THENCE N 22°22'51" E, 12.64' TO A CALCULATED POINT; THENCE S 89°00'44" W, 13.85' TO A CALCULATED POINT; THENCE N 21°54'51" E, 14.33' TO THE POINT OF BEGINNING; SUBJECT EASEMENT CONTAINS 0.01 ACRES +/-.

LINE TABLE		
LINE #	BEARING	DISTANCE
L1	S 86°46'10" E (M)	24.16' (M)
L2	S 21°54'18" W (M)	25.00' (M)
L3	S 89°00'44" W (M)	11.12' (M)
L4	N 22°22'51" E (M)	12.64' (M)
L5	S 89°00'44" W (M)	13.85' (M)
L6	N 21°54'51" E (M)	14.33' (M)



GEODETIC NORTH



SHEET NO.	SCALE	DATE	CHECKED	DRAWN	REVISIONS			
					NO.	CHECK	DATE	DESCRIPTION
1	1" = 30'	FEB. 20, 2017	R. PERRY	J. POWERS	1	RP	3.8.17	REDUCE AREA OF EASEMENT

AUBURN UNIVERSITY  
UTILITY EASEMENT

CITY OF AUBURN  
S. COLLEGE ST. & WOODFIELD DR.

PUBLIC WORKS DEPARTMENT  
171 N. ROSS STREET, SUITE 200  
AUBURN, ALABAMA 36830  
PHONE: (334) 501-3000; FAX: (334) 501-7294



---

**TO:** JAY GOGUE, President  
**THROUGH:** DAN KING, Associate Vice President  
**FROM:** MARK STIRLING, Director of Real Estate  
**SUBJECT:** PROPERTY AND FACILITIES COMMITTEE  
**WOODFIELD DRIVE TRAFFIC LIGHT EASEMENT: APPROVAL OF EASEMENT**  
**DATE:** MAY 18, 2017

---

I am writing to request that the following item presented through the Property and Facilities Committee and added to the Board of Trustees' agenda for consideration at the meeting scheduled for June 9, 2017.

**Proposal:**

It is requested by the City of Auburn that Auburn University grant an easement for the installation of new traffic signals at the South College Street and Woodfield Drive intersection and that the Woodfield Drive Traffic Light Easement project be submitted to the Board of Trustees for approval through the Property and Facilities Committee.

**Review and Consultation:**

The City of Auburn is proposing to improve the intersection of South College Street and Woodfield Drive by installing new traffic signals, decorative poles and equipment. The properties at three of the four corners of the intersection belong to Auburn University. The new traffic signal poles require a wider footprint, which extends beyond the South College right-of-way on the northwest corner. The easement will require the use of approximately 0.01 acres of Auburn University property on the west side of South College Street as described in Attachment 1. No easement is required from the other property owner.

The Woodfield Drive Traffic Light Easement project design is complete and awaiting final approval through the Auburn University Board of Trustees. This request has been approved by the Auburn University Real Estate Department and Facilities Management.

**Recommendation:**

We request that the Board of Trustees of Auburn University authorize and empower Jay Gogue, President, or such person as may be acting as President be and the same, to take such action as is necessary and desirable to execute an Easement Agreement for the property described in Attachment A to facilitate those improvements to the intersection. The Woodfield Drive Traffic Light Easement project will be an improvement to the intersection and is in the best interest of Auburn University and the safety of its students, faculty, and staff. All documents consummating the Easement Agreement shall be reviewed as to form by legal counsel for Auburn University.



# Attachment 1

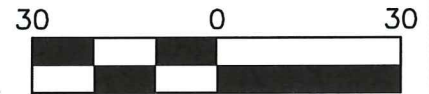
0.01 AC +/- UTILITY EASEMENT

## Woodfield Drive Traffic Light Easement

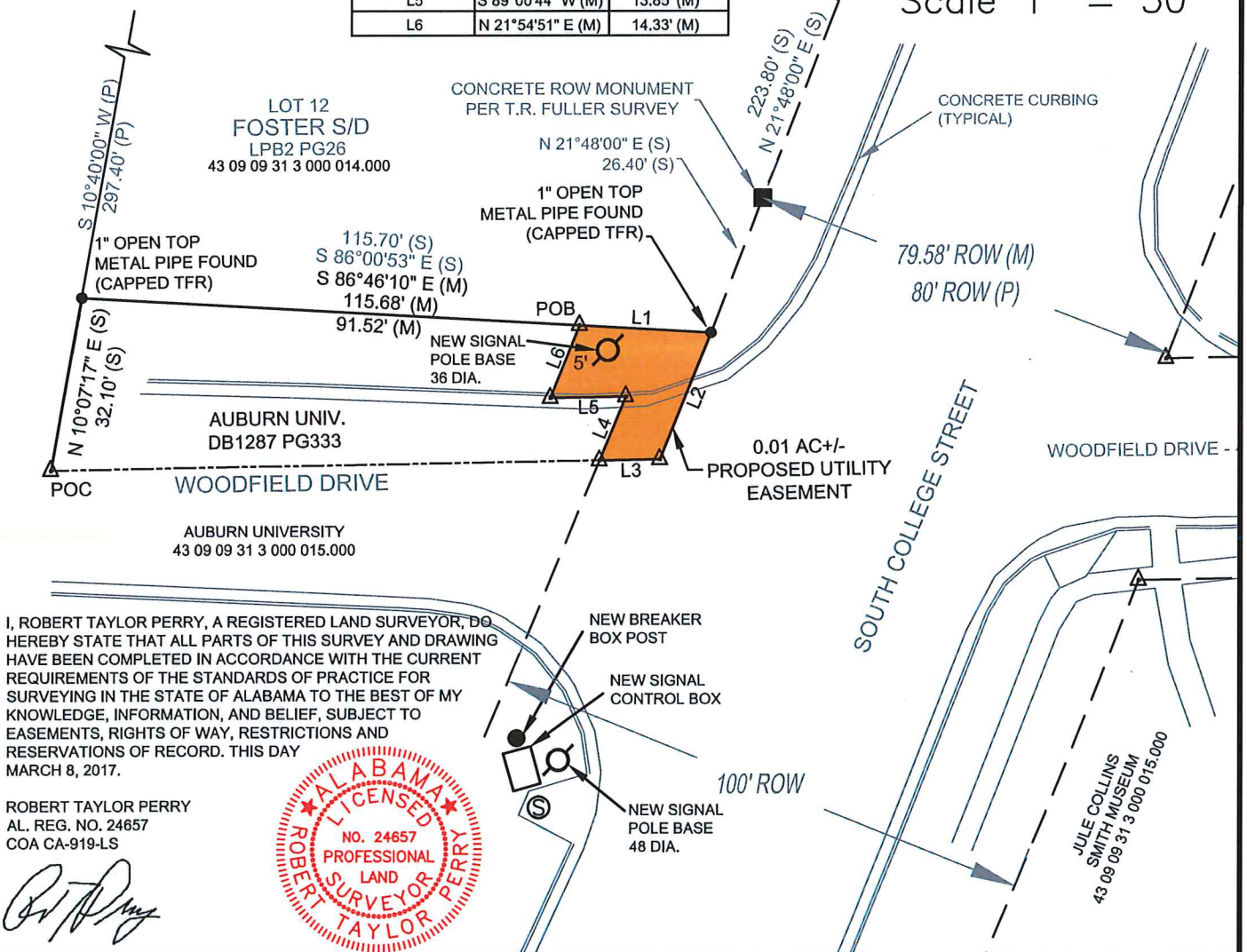
STATE OF ALABAMA  
LEE COUNTY  
CITY OF AUBURN

COMMENCE AT A CALCULATED POINT AT THE SW CORNER OF LOT 12 OF FOSTER S/D, LEE PLAT BOOK 2 PAGE 26; THENCE, AS PER DEED BOOK 1287 PAGE 333, N 10°07'17" E, 32.10' TO A CAPPED 5/8" REBAR FOUND(FULLER); THENCE S 86°46'10" E, 91.52' TO A CALCULATED POINT AT THE POINT OF BEGINNING OF THE SUBJECT 0.01 ACRES +/- UTILITY EASEMENT; THENCE S 86°46'10" E, 24.16' TO A CAPPED 5/8" REBAR FOUND(FULLER) AT THE WESTERLY RIGHT OF WAY OF S. COLLEGE STREET; THENCE ALONG SAID WESTERLY RIGHT OF WAY S 21°54'18" W, 25.00' TO A CALCULATED POINT; THENCE LEAVING SAID WESTERLY RIGHT OF WAY S 89°00'44" W, 11.12' TO A CALCULATED POINT; THENCE N 22°22'51" E, 12.64' TO A CALCULATED POINT; THENCE S 89°00'44" W, 13.85' TO A CALCULATED POINT; THENCE N 21°54'51" E, 14.33' TO THE POINT OF BEGINNING; SUBJECT EASEMENT CONTAINS 0.01 ACRES +/-.

LINE TABLE		
LINE #	BEARING	DISTANCE
L1	S 86°46'10" E (M)	24.16' (M)
L2	S 21°54'18" W (M)	25.00' (M)
L3	S 89°00'44" W (M)	11.12' (M)
L4	N 22°22'51" E (M)	12.64' (M)
L5	S 89°00'44" W (M)	13.85' (M)
L6	N 21°54'51" E (M)	14.33' (M)



GEODETIC NORTH



I, ROBERT TAYLOR PERRY, A REGISTERED LAND SURVEYOR, DO HEREBY STATE THAT ALL PARTS OF THIS SURVEY AND DRAWING HAVE BEEN COMPLETED IN ACCORDANCE WITH THE CURRENT REQUIREMENTS OF THE STANDARDS OF PRACTICE FOR SURVEYING IN THE STATE OF ALABAMA TO THE BEST OF MY KNOWLEDGE, INFORMATION, AND BELIEF, SUBJECT TO EASEMENTS, RIGHTS OF WAY, RESTRICTIONS AND RESERVATIONS OF RECORD. THIS DAY MARCH 8, 2017.

ROBERT TAYLOR PERRY  
AL. REG. NO. 24657  
COA CA-919-LS

*Robert Taylor Perry*



AUBURN UNIVERSITY  
UTILITY EASEMENT

CITY OF AUBURN  
S.COLLEGE ST. & WOODFIELD DR.

PUBLIC WORKS DEPARTMENT

171 N. ROSS STREET, SUITE 200  
AUBURN, ALABAMA 36830  
PHONE: (334) 501-3000; FAX: (334) 501-7294



PROPERTY AND FACILITIES COMMITTEE

GULF SHORES EDUCATION CENTER LEASE

(Time will be allocated for review of the Gulf Shores Education Center Lease)



---

**TO:** JAY GOGUE, President  
**THROUGH:** DONALD L. LARGE, Executive Vice President  
**FROM:** MARK STIRLING, Director of Real Estate  
**SUBJECT:** PROPERTY AND FACILITIES COMMITTEE  
**ANNUAL REPORT OF REAL ESTATE HOLDINGS**  
*FOR INFORMATION ONLY*  
**DATE:** MAY 18, 2017  
**CC:** FILE

---

This is to request that the following item be presented to the Board of Trustees through the Property and Facilities Committee and be included on the agenda of the meeting scheduled for June 9, 2017.

**Proposal:**

Policy of the Board of Trustees requires that a listing of property owned by Auburn University be submitted to the Board, through the Property and Facilities Committee, for its information and review on the occasion of its annual meeting. Accordingly, property listing and summary based on last year's report and changes that have occurred since June 2016 have been prepared and are submitted for the Board's information and review. (Attachments 1 and 2)

**Review and Consultation:**

Responsibility for management of real estate records was assigned to the Director of Real Estate at the close of Fiscal Year 2010. Records indicate that the following conveyances of real property have occurred since June 2016: two (2) for Auburn University; none (0) for Auburn University at Montgomery; one (1) for the Alabama Agricultural Experiment Station; and none (0) for the Alabama Cooperative Extension System.

**Rationale for Recommendation:**

Submission of the information included in the "Summary of Real Estate Holdings" (Attachment 1) is required by policy of the Auburn University Board of Trustees.

**SUMMARY OF REAL ESTATE HOLDINGS**  
AUBURN UNIVERSITY *and* AUBURN UNIVERSITY AT MONTGOMERY

ANNUAL REPORT  
2017



JUNE 9, 2017

**AUBURN UNIVERSITY**  
**SUMMARY OF REAL ESTATE HOLDINGS FY 2016**  
 June 9, 2017

**Auburn University Real Estate Department**

DEED FILE NUMBER	DATE OF ACQUISITION	FROM WHOM ACQUIRED	ORIGINAL COST / FMV	CURRENT USE	ACREAGE / RESTRICTIONS	LOCATION OF PARCEL
2	Feb. 28, 1945	Mary E. Cox (Auburn Development Society, Inc.)	38,335.36	Academic	9.73 acres/No	Magnolia Ave AU/Main Campus
3	July 17, 1915	A.H. Cox	2,400.00	Academic	6.5 acres/No	Thach Ave. & Donahue Dr. AU/Main Campus
4	August 7, 1920 - August 17, 1901	Eva A. Smythe, et al	3,200.00	Academic	6 acres/No	Magnolia Ave. & Tiger Street AU/Main Campus
5	April 6, 1877	Matilida Lee	250.00	Academic	2.75 acres/No	Magnolia Ave. & Tiger Street AU/Main Campus
6	Feb. 8, 1923	Walter & Fannie Hoffman	2,500.00	Academic	2.14 acres/No	Thach Ave. AU/Main Campus
6A	March 3, 1915	J.W. Leila & F. Wright	400.00	Academic	1.5 acres/No	Thach Ave. AU/Main Campus
8	Feb. 17, 1872	East Ala. Male College	150.00	Academic	15 acres/No	College St. & Thach Ave.
10	June 5, 1889	W.L. Chambers, et al	2,755.98	Academic	1.5 acres/No	Magnolia Ave. (W) AU/Main Campus
11	Sept. 14, 1887	E. & T.L. Frazier	10.00	Academic	.5 acres/No	Magnolia Ave. & College Street AU/Main Campus
13	Aug. 20, 1926	Lee County Probate Court	4,500.00	Academic	.25 acres/No	Magnolia Ave. & College Street AU/Main Campus
14	Dec. 9, 1922	W.F. Heavey	2,200.00	Academic	.22 acres/No	Magnolia Ave. & College Street AU/Main Campus
15	March 26, 1908	Roger A.P.C. & C.C. Jones	200.00	Academic	.02 acres/No	Magnolia Ave. & College Street AU/Main Campus
16	Aug. 2, 1907	M.L. Bradford	3,500.00	Academic	.67 acres/No	College St. AU/Main Campus
16A	Aug. 2, 1907	Clay Zuber	800.00	Academic	Part of #16/No	College St. AU/Main Campus
16B	Aug. 2, 1907	T.C. & G.E. Bradford	726.27	Academic	Part of #16/No	College St. AU/Main Campus
17	May 9, 1914	Bessie L. Brown	50.00	Academic	.11 acre/No	College St. AU/Main Campus
18	April 12, 1922	Young Men's Christian Assoc. of API-Exchange of Property to API	Land Exchange	Academic	.29 acre/No	College St. AU/Main Campus
20	Nov. 4, 1925	Amos H. Cox	1,000.00	Academic	.75 acres/No	Donahue Dr. AU/Main Campus
21	Sept. 13, 1920	Elijah & Annie Lampkin	900.00	Academic	1.5 acre/No	Thach & Donahue Dr. AU/Main Campus
22	Aug. 2, 1915	C.A. & Emma Cary	38.00	Academic	.11 acre/No	Thach Ave. AU/Main Campus
23	Aug. 2, 1915	C.A. & Emma Cary	522.00	Academic	1 acre/No	Thach Ave. AU/Main Campus
24	Aug. 27, 1915	R.M. Mitchell	1,500.00	Academic	17 acres/No	Thach & Donahue Dr. AU/Main Campus
25	July 9, 1923 (Recd 6/16/65)	J.H. & M.E. Drake	2,500.00	Academic	13.6 acres/No	Thach Ave. AU/Main Campus
26	March 13, 1923	E.E. & D.C. Thomas	2,500.00	Academic	4 acres/No	Duncan Dr. AU/Main Campus
27	April 17, 1907	Lula A. & Lummis A. Knapp	2,000.00	Academic	5.5 acres/No	Mell & Roosevelt AU/Main Campus
28	Feb. 17, 1930	Thach Estate	35,000.00	Academic	2.5 acres/No	Mell & Thach AU/Main Campus
29	Aug. 18, 1903	P.H. & A.W. Mell	2,700.00	Academic	1 acre/No	Thach & Mell AU/Main Campus



DEED FILE NUMBER	DATE OF ACQUISITION	FROM WHOM ACQUIRED	ORIGINAL COST / FMV	CURRENT USE	ACREAGE / RESTRICTIONS	LOCATION OF PARCEL
30	March 29, 1930	Thach, Smith & Hamilton	14,000.00	Academic	.610 acres/No	Mell St. AU/Main Campus
31	April 19, 1934 (Recd 6/16/65)	M.A. Glenn	15,000.00	Academic	.750 acres/No	Mell St. AU/Main Campus
32	Dec. 13, 1923	D.T. & L.D. Gray	5,600.00	Academic	.600 acres/No	Mell & Roosevelt AU/Main Campus
33	March 16, 1920	T.J. Boyd & Flemings	6,000.00	Academic	2 acres/No	Mell St. AU/Main Campus
34	Oct. 26, 1928	M.E. Drake & Askews	11,200.00	Leased	1.86 acres/Yes	College & Thach AU/Main Campus
35	June 12, 1923	Mason Estate	10,000.00	Leased	1.9 acres/Yes	College St. AU/Main Campus
36	Oct. 26, 1928	S.B. Madre	12,000.00	Leased	.77 acres/Yes	College St. AU/Main Campus
37	Oct. 27, 1928	F.C. & C.W. Hulse	3,400.00	Leased	.70 acres/Yes	College St. AU/Main Campus
38	Oct. 15, 1937	R.P. & D. Ward	6,765.00	Academic	165 acres/No	Samford & Hiram Ln. AU/Main Campus
39	Oct. 27, 1928-April 23, 1930	James H. Farrar Estate	2,265.00	Academic	15 acres/No	Biggio Drive AU/Main Campus
40	Oct. 12, 1884	J.H. & M.E. Drake	636.00	Academic	31.8 acres/No	Duncan Drive AU/Main Campus
41	Jan. 14, 1884	E.R. Rivers	500.00	Academic	37 acres/No	College St. AU/Main Campus
41A	Dec. 30, 1886	Strom Estate	135.00	Academic	7 acres/No	College St. AU/Main Campus
43	Oct. 11, 1935	F.L. & J.W. Drake	6,000.00	Leased	.6 acres/Yes	College St. AU/Main Campus
43A	March 23, 1929	J.H. Drake Family	3,200.00	Leased	.38 acres/Yes	College St. AU/Main Campus
44	Nov. 29, 1899	L.A. Foster Estate	538.00	Academic	78 acres/Yes	Donahue Drive AU/Main Campus
45	March 5, 1884	J.B. Gay	1,700.00	Academic	70.7 acres/No	Mell Street AU/Main Campus
46	Oct. 27, 1924	J.A. Cullars Estate	2,500.00	Leased?	1.35 acres/Yes	College & Samford AU/Main Campus
47	Sept. 1, 1923	R.T. & P.P. Dubose	3,995.00	Academic	93 acres/Yes	Wire Road AU/Main Campus
48	Nov. 23, 1921	O.B. & R.E. Ennis/T.O. & M.B. Wright	1,800.00	Academic	50 acres/No	Farm Road AU/Main Campus
49	Sept. 17, 1923	A.Z. & W.H. Pace	4,360.00	Academic	109 acres/Yes	Donahue Drive AU/Main Campus
50	May 15, 1924	Sophonra E. Foster	5,219.50	Academic	47.5 acres/No	Donahue Drive AU/Main Campus
51	July 9, 1943	Cherry Estate	1.00	Academic	2.8 acres/No	Shug Jordan Pkwy. AU/Main Campus
51A	May 1, 1944	B.C. & L.C. Pope	3,250.00	Academic	58.2 acres/No	Wire Road AU/Main Campus
52	Dec. 7, 1923	Foster Family	2,160.50	Academic	50.2 acres/No	Shug Jordan Parkway AU/Main Campus
53	Sept. 17, 1923	W.T. & C.P. Rutledge	2,376.00	Academic	60 acres/No	Camp Auburn Rd. AU/Main Campus
54	Sept. 1, 1923	John D. Foster	5,000.00	Academic	40 acres/Yes	Donahue & College AU/Main Campus
55	Oct. 23, 1938	Bessie A., Emrick, L.A. & G.A. Miller	3,698.00	Research	26 acres/No	College & Woodfield AES/Main Campus
56	Feb. 3, 1939	M.L. Cullars	5,000.00	Academic	225 acres/Yes	College & Shug Jordan Pkwy AU/Main Campus
57	3/28/40-3/3/43, 10/11/98	A. - O. Airport, Inc. et al	41,149.10	Academic	333.23 acres/No	Pitts Airport Au/Lee County
58	Feb. 16, 1940 - May 20, 1940	Bradley, Evans, & Duke	8,175.00	Academic	596.173 acres/No	N. Auburn Fisheries Unit State 147 AU/Lee County
58A	Dec. 18, 1943	G.L. & M.V. Story	8,500.00	Academic	699 acres/Yes	N. AU Fisheries Unit Lee Rd. 046 AU/Lee County
59	July 10, 1943 - June 10, 1941	D.E. & Minnie Lee, B'ham T. & S. Co.	1,990.00	Research	300 acres/No	Autauga Co. Forest Unit - AU/Autauga Co.

DEED FILE NUMBER	DATE OF ACQUISITION	FROM WHOM ACQUIRED	ORIGINAL COST / FMV	CURRENT USE	ACREAGE / RESTRICTIONS	LOCATION OF PARCEL
	Aug. 22, 1928 - Oct 9, 1937	Autauga Co. Probate Off., Birdie I. Doster	2,405.00	Research	80 acres/No	Prattville Exp. Field - AES/Autauga Co.
60	Dec. 29, 1929 (Recd 9/13/52)	Mary J. Brassil	1.00	Research	5 acres/No	Gulf Coast Subst-AES-Baldwin Co.
	May 14, 1930 (Recd 9/13/52)	S.E. & B.W. Riall	1.00	Research	80 acres/No	Gulf Coast Subst-AES-Baldwin Co.
	Nov. 27, 1929 (Recd 7/6/50)	J. & J. Shuller	1.00	Research	1 acre/No	Gulf Coast Subst-AES-Baldwin Co.
	July 27, 1936	W.C. Mason	1.00	Research	76.91 acres/No	Gulf Coast Subst-AES-Baldwin Co.
	Nov. 27, 1929	H.A. Goodrich	1.00	Research	73.87 acres/No	Gulf Coast Subst-AES-Baldwin Co.
	Nov. 27, 1929	O. & J. Lowell	1.00	Research	1 acre/No	Gulf Coast Subst-AES-Baldwin Co.
	Nov. 27, 1929	J.M. & M.C. Green	10.00	Research	20 acres/No	Gulf Coast Subst-AES-Baldwin Co.
	Nov. 27, 1929	R. & B. Klumpp	1.00	Research	3 acres/No	Gulf Coast Subst-AES-Baldwin Co.
	Nov. 27, 1929	C.G. & F.L. Godard	1.00	Research	80 acres/No	Gulf Coast Subst-AES-Baldwin Co.
	Oct. 9, 1929	W.H. & M. Stapleton	1.00	Research	100 acres/No	Gulf Coast Subst-AES-Baldwin Co.
	Oct. 9, 1929	F.A. & F. Duba	1.00	Research	79.56 acres/No	Gulf Coast Subst-AES-Baldwin Co.
	Oct. 9, 1929	D.C. & L. Stapleton	1.00	Research	140 acres/No	Gulf Coast Subst-AES-Baldwin Co.
	Oct. 9, 1929	J.R. Aylin	1.00	Research	40 acres/No	Gulf Coast Subst-AES-Baldwin Co.
	Dec. 14, 1993	Baldwin Co. Court Decree	Donated	Research	85.72 acres/No	Gulf Coast Subst-AES-Baldwin Co.
61	May 23, 1940	Barbour County	1.00	Research	178 acres/No	Barbour Co. Forest Unit - AU Barbour County
64	April 11, 1940	J.T. & M.C. Newman	1.00	Research	160 acres/No	Coosa Co. - Forest Unit - AU Coosa County
65A	June 7, 1946	J.A. Carns Family	12,000.00	Research	100 acres/Yes	Sand Mountain Subst-AES-Dekalb Co.
	Dec. 8, 1937	W.V. & G. Roden	5,760.00	Research	66 acres/Yes	Sand Mountain Subst-AES-Dekalb Co.
	Sept. 30, 1935	L. & M. Weathington	2,000.00	Research	40 acres/Yes	Sand Mountain Subst-AES-Dekalb Co.
	Aug. 22, 1928	W.V. & G. Roden	1,700.00	Research	18 acres/Yes	Sand Mountain Subst-AES-Dekalb Co.
	Aug. 22, 1928	J.W. & E. Black	4,400.00	Research	40 acres/Yes	Sand Mountain Subst-AES-Dekalb Co.
	Aug. 22, 1938	W.B. & E.E. Jones	18,000.00	Research	182 acres/Yes	Sand Mountain Subst-AES-Dekalb Co.
65B	Oct. 16, 1946	R.C. & N.M. Christopher	7,200.00	Research	60 acres/Yes	Sand Mountain Subst-AES-Dekalb Co.
66	Aug. 21, 1929	C.S. & M. Cook	5,000.00	Research	60 acres/No	Brewton Exp. Field-AES-Escambia Co.
	July 16, 1938	A. & F. Nicholson	500.00	Research	19.6 acres/No	Brewton Exp. Field-AES-Escambia Co.
67	Nov. 2, 1942	R.E. & B. Soloman	750.00	Research	23 acres/No	Wiregrass Subst-AES-Henry Co.
	May 14, 1936	A.D. & K. Walden	2,852.00	Research	38.021 acres/No	Wiregrass Subst-AES-Henry Co.
	March 14, 1929	Roberts & Wilkinson Families	26,801.00	Research	220 acres/No	Wiregrass Subst-AES-Henry Co.
	Aug. 23, 1941	O. & C.F. Wilkinson	2,401.00	Research	40 acres/No	Wiregrass Subst-AES-Henry Co.
	April 30, 1929	E. & M. Lindsay	1.00	Research	Private Road	Wiregrass Subst-AES-Henry Co.
	April 30, 1929	Mary Baker	1.00	Research	Private Road	Wiregrass Subst-AES-Henry Co.
69	March 5, 1946	John & Irene Grayson	57,417.60	Research	475.18 acres/No	Tenn. Valley Subst-AES-Limestone Co.
	March 9, 1928	J.H. Tolley & Limestone Co.	30,000.00	Research	240 acres/No	Tenn. Valley Subst-AES-Limestone Co.

DEED FILE NUMBER	DATE OF ACQUISITION	FROM WHOM ACQUIRED	ORIGINAL COST / FMV	CURRENT USE	ACREAGE / RESTRICTIONS	LOCATION OF PARCEL
	April 6, 1937	Limestone Co., Alabama	1.00	Research	35 acres/No	Tenn. Valley Subst-AES-Limestone Co.
72	Oct. 29, 1930-July 19, 1967	City of Mobile-4 Deeds	4.00	Research	17.2 acres/Yes	Ornamental Hort. Subst-AES-Mobile Co.
73	June 19, 1929	J.R. Eddins	4,500.00	Research	40 acres/Yes	Monroeville Exp Field-AES-Monroe Co.
	Jan. 6, 1940	Willie Sawyer	3,200.00	Research	39 acres/No	Monroeville Exp. Field-AES-Monroe Co.
74	March 19, 1930	Dallas Co., Alabama	Donated	Research	80 acres/No	Blackbelt Subst.-AES-Dallas County
	March 19, 1930	Dallas Co., Alabama	Donated	Research	1035 acres/No	Blackbelt Subst.-AES-Dallas County
76	Sept. 21, 1946	L.S. & S.H. Smith	1,580.00	Research	158 acres/No	Fayette Co. Exp. Forestry Unit-AES-Fayette Co.
	Oct. 2, 1946	L.S. & S.H. Smith	2,900.00	Research	103.5 acres/No	Fayette Co. Exp. Forestry Unit-AES-Fayette Co.
	Sept. 2, 1946	Z.A. & D. Rowland	1,600.00	Research	160 acres/No	Fayette Co. Exp. Forestry Unit-AES-Fayette Co.
	Nov. 6, 1944	Z. Housh & J.D. Bone	1,440.00	Research	120 acres/No	Fayette Co. Exp. Forestry Unit-AES-Fayette Co.
	Nov. 4, 1944	C.M. & C.C. Anderson	750.00	Research	60 acres/No	Fayette Co. Exp. Forestry Unit-AES-Fayette Co.
	Nov. 4, 1944	T.M. & E. McClesky	875.00	Research	70 acres/No	Fayette Co. Exp. Forestry Unit-AES-Fayette Co.
	Nov. 4, 1944	B.F. & M.B. Harkins	3,750.00	Research	160 acres/No	Fayette Co. Exp. Forestry Unit-AES-Fayette Co.
	Nov. 6, 1944	J.V. & R. Gilpin	3,750.00	Research	200 acres/No	Fayette Co. Exp. Forestry Unit-AES-Fayette Co.
	Nov. 6, 1944	J.P. & P. Trim	800.00	Research	60 acres/No	Fayette Co. Exp. Forestry Unit-AES-Fayette Co.
	Dec. 15, 1944	Estate of T.H. Robertson	4,250.00	Research	240 acres/No	Fayette Co. Exp. Forestry Unit-AES-Fayette Co.
77	Feb. 23, 1945	A.T. & J. Couch	175.00	Research	2 acres/No	Upper Coastal Plain Subst-AES-Marion Co.
	Dec. 28, 1944	A.T. & J.Y. Couch	5,200.00	Research	80.2 acres/No	Upper Coastal Plain Subst-AES-Fayette Co.
	Dec. 28, 1944	E.M. & M.E. Earnest	2,000.00	Research	42 acres/No	Upper Coastal Plain Subst-AES-Fayette Co.
	Dec. 28, 1944	G.W. & C. Couch	7,000.00	Research	150 acres/No	Upper Coastal Plain Subst-AES-Fayette & Marion Co.
	Dec. 28, 1944	J.W. & Julia M. Ward	6,050.00	Research	82 acres/No	Upper Coastal Plain Subst-AES-Fayette Co.
	Dec. 28, 1944	Hazel Couch	10,000.00	Research	298 acres/No	Upper Coastal Plain Subst-AES-Fayette Co.
	Dec. 28, 1944	D.H. & E.J. May	2,100.00	Research	40 acres/No	Upper Coastal Plain Subst-AES-Fayette Co.
	Dec. 28, 1944	J.D. May	1,900.00	Research	41 acres/No	Upper Coastal Plain Subst-AES-Fayette Co.
78	June 21, 1945	Auburn Country Club	30,000.00	Academic	60.95 acres/No	W. Magnolia Ave. AU/Main Campus
79	Sept. 7, 1945 (Recd 7/31/78)	Beulah Gerson	52,500.00	Research	664 acres/No	PBU-AES-Elmore County
81	October 3, 1946	Cary Estate	30,000.00	Academic	20 acres/No	Wire Road AU/Main Campus
82	June 6, 1946	County Condemnation	6,749.00	Research	258 acres/No	Piedmont Subst.-AES-Tallapoosa Co.
	Dec. 20, 1944	H.J. & D.E. Willis	3,640.00	Research	240 acres/No	Piedmont Subst.-AES-Tallapoosa Co.
	Dec. 21, 1944	J.S. Norris	2,400.00	Research	112 acres/No	Piedmont Subst.-AES-Tallapoosa Co.
	Dec. 19, 1944	A. & E. Evans	4,040.00	Research	160 acres/No	Piedmont Subst.-AES-Tallapoosa Co.
	Dec. 19, 1944	S. & E. Woodyard	2,340.00	Research	107 acres/No	Piedmont Subst.-AES-Tallapoosa Co.
	Dec. 20, 1944	L. Ward	812.00	Research	51.45 acres/No	Piedmont Subst.-AES-Tallapoosa Co.
	Dec. 19, 1944	W.F. & Donna McGinty	540.00	Research	20 acres/No	Piedmont Subst.-AES-Tallapoosa Co.
	Dec. 19, 1944	G. & S. Brown	3,540.00	Research	100 acres/No	Piedmont Subst.-AES-Tallapoosa Co.
	Dec. 27, 1944	C.B. & C.E. Sullivan	5,040.00	Research	160 acres/No	Piedmont Subst.-AES-Tallapoosa Co.

DEED FILE NUMBER	DATE OF ACQUISITION	FROM WHOM ACQUIRED	ORIGINAL COST / FMV	CURRENT USE	ACREAGE / RESTRICTIONS	LOCATION OF PARCEL
	Dec. 19, 1944	L. Garlington	4,040.00	Research	32 acres/No	Piedmont Subst.-AES-Tallapoosa Co.
	Nov. 15, 1945	L.E. & T.G. Jennings	2,290.00	Research	9 acres/No	Piedmont Subst.-AES-Tallapoosa Co.
	Dec. 19, 1944	T.J. & B.M. Henderson	3,240.00	Research	160 acres/No	Piedmont Subst.-AES-Tallapoosa Co.
	Dec. 27, 1944	Federal Land Bank of New Orleans	60.00		Mineral Rights	Piedmont Subst.-AES-Tallapoosa Co.
83	Jan. 27, 1948	Presbyterian Church	10.00	Academic	.13/No	Thach Ave. - AU/Main Campus
84	Feb. 2, 1948	E.J. & Leona Orth	1.00	Research	159.32 acres/No	N. Alabama Horticulture Substation-AES-Cullman Cty.
85	April 3, 1948	O.D. & C.F. Wilkinson	33,000.00	Research	276 acres/No	Wiregrass Subst.-AES-Henry County
87	Jan. 11, 1949	T.J. & M.F. Whatley	5,080.00	Leased	25.4 acres/Yes	Forestry Unit AU/Lee County
88	Nov. 27, 1948	Sims Family	13,500.00	Academic	20 acres/No	Wire Road AU/Main Campus
89	Jan. 25, 1961-	U.S.D.A. (Farrar Estate)	10.00	Academic	40 acres/No	Roosevelt St. AU/Main Campus
93	Dec. 8, 1948	R. & L.S. Gore	9,750.00	Research	65 acres/No	Chilton Area Hort. Subst.-AES- Chilton
	Dec. 8, 1948	R.T. & M. Davis	12,000.00	Research	80 acres/No	Chilton Area Hort. Subst.-AES-Chilton
93A	Dec. 8, 1960	Cox Family	5,000.00	Research	16 acres/No	Chilton Area Hort. Subst.-AES-Chilton
94	Jan. 10, 1949	McGhee, Merritt & McCabe Families (SOLD)	-	Support	.6 acre/No	RR Warehouse AU/Lee County (SOLD - 5/5/2016)
98	Jan. 14, 1948	W.D. & M. Clements	17,280.00	Academic	576 acres/No	N. Auburn Dairy Unit-AU-Lee County
99	Feb. 23, 1949	Mr. & Mrs. J.L. Fincher	2,500.00	Academic	80 acres/No	N. Auburn Fisheries Unit-AU-Lee Co.
100	March 21, 1949	A.C. & S.C. Carter	19,630.00	Academic	394.2 acres/No	N. Auburn Beef Cattle-AU-Lee Co.
101	July 22, 1949	L.L. & W.W. Bradley	4,050.00	Academic	81 acres/No	N. Auburn Beef Cattle-AU-Lee Co.
101A	July 22, 1949	M.E. & M.B. Earnest	4,050.00	Academic	81 acres/No	N. Auburn Beef Cattle-AU-Lee Co.
102	July 5, 1949	J.S. & C. Smith	3,000.00	Research	1 acre/No	Wiregrass Subst.-AES-Henry County
	May 14, 1936	R.S. & E. Solomon	1,200.00	Research	3 acres/No	Wiregrass Subst.-AES-Henry County
103	Aug. 5, 1963	E.P. Strother	36,000.00	Research	240 acres/No	Lower Coastal Plain Subst.-AES-Wilcox Co.
	Aug. 29, 1949	Wilcox County	1.00	Research	1,210.2 acres/No	Lower Coastal Plain Subst.-AES-Wilcox Co.
	May 30, 1951	Wilcox County	1.00	Research	539 acres/No	Lower Coastal Plain Subst.-AES-Wilcox Co.
	Jan. 7, 1967	J. & S.M. Strother	39,600.00	Research	240 acres/No	Lower Coastal Plain Subst.-AES-Wilcox Co.
104	April 18, 1950	A.C. & S.C. Carter	15,712.50	Academic	384.1 acres/Yes	N. Auburn Beef Cattle Un.-AU-Lee Co.
107	June 6, 1950	G.L. & M.B. Jackson	2,000.00	Academic	40 acres/No	N. Auburn Beef Cattle Un.-AU-Lee Co.
108	Oct. 11, 1950	Dewey Hodge	5,000.00	Academic	51.5 acres/No	N. Auburn Beef Cattle Un.-AU-Lee Co.
	Dec. 2, 1953	D.W. Ward	1,200.00	Academic	1.3 acres/No	N. Auburn Beef Cattle Un.-AU-Lee Co.
112	Aug. 21, 1957	R.E. Hudson Estate	104,193.21	Academic	333.81 acres/Yes	Wire Road AU/Main Campus
114	Jan. 27, 1960	K.M. Lane	150,000.00	Academic	4.47 acres/No	College Street AU/Main Campus
115	May 2, 1962	S.R. Copeland	6,500.00	Reserve	1.92 acres/No	Wire Road AU/Main Campus
117	July 5, 1962	C.A. Lowery	9,000.00	Reserve	1 acre/No	Wire Road AU/Main Campus
118	Sept. 19, 1962	Z. Judd Estate	580.98	Academic	.17 acre/No	Arboretum - College St AU/Main Campus
119	Dec. 26, 1962 - Sept. 14, 1990	P. Kappa Alpha Dowdell Haygood -Yancey	52,954.76	Leased	6.13 acres/No	Sigma Phi Epsilon & Sigma Pi Magnolia Ave. AU/Main Campus
122	Nov. 9, 1966	John A.C. & Ruby W. Callan	32,500.00	Leased	.39 acres/Yes	College Street AU/Main Campus
124	Oct. 27, 1971	A. Hutchinson	10,500.00	Academic	18.8 acres/No	N. Auburn Fisheries AU/Lee County

DEED FILE NUMBER	DATE OF ACQUISITION	FROM WHOM ACQUIRED	ORIGINAL COST / FMV	CURRENT USE	ACREAGE / RESTRICTIONS	LOCATION OF PARCEL
126	Nov. 24, 1971	J. & L. Walker	14,840.00	Academic	42.4 acres/No	N. Auburn Fisheries AU/Lee County
127	June 2, 1973	J.D. & M.L. Davis	58,315.00	Academic	44 acres/No	N. Auburn Fisheries AU/Lee County
128	May 31, 1976	L.R. Turner (Land Exchange)	1.00	Academic	1.71 acres/No	Farmville Church AU/Lee County
129	Dec. 23, 1974 - June 30, 1975	Sheppard, Crowley & Jeter	255,078.00	Research	511.37 acres/No	E.V. Smith Research Ctr.-AES-Macon Co.
131	May 31, 1974	B.W. & F.L. Walker, J.M. & S.R. Walker	1,250,672.29	Research	2,715.52 acres/No	E.V. Smith Research Ctr.-AES-Macon Co.
133	Feb. 5, 1975	W.E. & M.L. Bell	25,000.00	Research	5.43 acres/No	North Auburn Fisheries-AU-Lee County
134	Sept. 10, 1976	Turnipseed - Ikenberry	275,000.00	Research	1,028 acres/No	Turnipseed - Ikenberry Unit AES- Bullock County
135	Oct. 8, 1976	J.W. & V.M. Goodwin	101,904.00	Reserve	3.04 acres/No	Birmingham-AU-Jefferson County
136	May 21, 1975	S.A. & P.W. Edgar	120,500.00	Academic	112.5 acres/No	N. Auburn Fisheries-AU-Lee County
137	Nov. 21, 1978	Solon Dixon, M.D. & H.P. Coale	120,000.00	Academic	160 acres/Yes	S. Dixon Ctr-AU-Escambia & Covington
	Dec. 7, 1979	Solon Dixon	145,350.00	Academic	193.8 acres/Yes	S. Dixon Ctr-AU-Escambia & Covington
	August 20, 1980	Solon Dixon	9,334.00	Academic	40 acres/Yes	Solon Dixon Center-AU-Covington Co.
	Sept. 8, 1986	Solon Dixon & Timber Value	693,919.35	Academic	1,193.6 acres/Yes	Solon Dixon Ctr. - AU - Escambia Co.
	Sept. 4, 1986	Solon Dixon & Timber Value	2,206,226.21	Academic	3,794.9 acres/Yes	Solon Dixon Ctr. - AU - Covington Co.
	May 21, 1987	Solon Dixon	10,333.25	Academic	40 acres/Yes	Solon Dixon Ctr. - AU - Covington Co.
139	Oct. 17, 1980	Wigley - Harper Estates	76,500.00	Research	116 acres/Yes	Wigley - Harper - AU - DeKalb Co.
140	Dec. 8, 1983	Mt. Vernon Mills, Inc.	5,000.00	Research	5.47 acres/No	Plant Breeding Unit - AES - Elmore Co.
142	June 6, 1984	R. L. F. & T.M. Baxter, Jr.	48,000.00	Research	40 acres/No	Wiregrass Substation-AES-Henry County
143	Sept. 21, 1984	Mary Olive Thomas Estate	380,000.00	Extension	399.79 acres/Yes	Moore's Mill Rd.(Hwy. 12)-CES-Lee County
144	Sept. 30, 1984	Auburn Industrial Development Board	8,711.87	Academic	2.25/Yes	Shug Jordan Pkwy. AU/Main Campus
147	April 4, 1986	Knight,Robinson,Kendrick,Stallings & Janies	198,000.00	Academic	88.137 acres/No	Airport AU/Lee County
148	Dec. 8, 1986	Fairchild Industries, Inc. (Insouth)	300,000.00	Research	12.63 acres/No	Skyway Drive AU/Lee County
149	Feb. 17, 1987	J.C. Mullins	2,500.00	Academic	0.072 acre/Yes	Woodfield Drive AU/Lee County
150	Dec. 18, 1987	Alumni Association	175,000.00	Leased	.4 acres/Yes	Miller Ave. AU/Lee County
151	Dec. 29, 1988	Maranatha Christian Churches Inc.	135,000.00	Academic	.25 acre/No	Magnolia Ave. AU/Lee County
152	March 17, 1994	Louise Kreher Turner (Through AUF)	297,500.00	Academic	119 acres/Yes	N. Auburn-Hwy 147 AU/Lee County
153	Nov. 10, 1994	B.W. Capps & Sons, Inc.	524,091.61	Research	1 Lot	AU Pavement Test Facility/Lee County
154	June 22, 1995	Lee County Educational Foundation	2,308,014.50	Academic	16.19 acres/Yes	Pitts Airport AU/Lee County
155	Sept. 27, 1996	Solitude Creek Joint Venture II	940,000.00	Research	Fish Ponds	Beauregard, AL
159	Jan. 26, 2000	Glenn Estates, Inc.	260,000.00	Academic	20 acres/No	CVM AU, Lee County
160	May 18, 2000	John L. Hartman	106,900.44	Research	31.36/No	N. Auburn/Lee County
"	June 30, 2000	Raymond and Rebecca Dowdell	101,960.54	Research	33.95/No	N. Auburn/Lee County
A128/295	April 28, 1998	AU Foundation/Gift Morrisett	410,000.00	Academic	acres/Yes	Hwy 61, Newberg, AL
161	June 18, 2001	Floyd & Wilner Richards/Richards Family	1,215,228.57	Academic	38.28 acres/No	Webster Rd. AU/Lee County
162	Jan. 23, 1965	James Haygood/Lamb Dowdell	144,500.00	Reserve	.714 acres/No	Lincoln Hts. Subdivision/Auburn/Lee County, AL
163	Sep. 18, 2006	Pebble Hill Property - AU Foundation	208,000.00	Academic		101 Debardeleben St/Auburn/Lee County, AL

DEED FILE NUMBER	DATE OF ACQUISITION	FROM WHOM ACQUIRED	ORIGINAL COST / FMV	CURRENT USE	ACREAGE / RESTRICTIONS	LOCATION OF PARCEL
164	Sep. 18, 2006	CLOSED Robert G. & Leslie Pitts	0.00	Reserve	1.92 acres/No	724 S. College St (swapped for 174)
165	Oct. 18, 2007	Yarbrough Farms Golf Facility	575,000.00	Academic	25.5 acres/No	1493 N. Donahue Dr/Auburn/Lee County, AL
165A	Oct. 18, 2007	Burbic - Yarbrough Farms Golf Facility	75,000.00	Academic	25.5 acres/No	1493 N. Donahue Dr/Auburn/Lee County, AL
166	June 27, 2008	Liddell-Hall-Stroud Property - AU Found.	349,500.00	Research	50 acres/No	Wilcox County, AL
167	July 26, 2011	Cary Pick House	740,000.00	Academic	.95 acres/No	N. College St, Lee County, AL
168	November 3, 2009	McClure Clinton Estate	1,260,000.00	Research	248 acres/yes	Sumter County, AL
169	December 15, 2011	Bruno's Property	2,400,000.00	Academic	6 acres/No	E. Glenn Ave, Lee County, AL
170	October 15, 2011	Golden Property	337,500.00	Academic	1.6 acres/No	Wesbster Road, Lee County, AL
171	April 1, 1975	James S. Boyd	Gift	Reserve	12.4 acres leased	Arlington Va - Washington and Lee Apartments
172	AUF	Grahm/Head Farm	Pending	Research	7.7 acres/Leased	waiting on transfer from AUF
173	March 10, 2012	Harris Early Learning Center	Leased Property	Academic	1.74 acres/leased	Birmingham - Child Development Center
174	October 18, 2013	Church of Christ	276,160.00	undecided	2.74 acres/no	Church of Christ Rental Houses (Pitts Swap)
175	June 2, 2014	Walthall	3,500.00	Academic	.85 acres/No	Rural Studio
176	October 29, 2014	Dean Property	1,004,976.65	Reserve	.8 acres/No	Samford Ave
177	January 9, 2015	Cambridge	11,500,000.00	Academic	2.55 acres	S. College Dr
178	February 4, 2015	West	270,000.00	Academic	80 acres/Yes	Jackson County - Timber Harvest for Forestry
179	December 11, 2015	Castillian	635,000.00	undecided	0.29 acres/Leased	Thach and Gay
180	March 28, 2016	North Park Deck	6,250,000.00	undecided	2 acres/No	W. Magnolia Ave. AU/Main Campus
181	April 4, 2016	Koart Property	1,169,500.00	Academic	750 acres/No	Talbot County, GA - Timber Harvest for C.O.Business
182	May 5, 2016	Pumphrey Warehouse	759,000.00	Administration	2.3 acres/No	Pumphrey Ave. AU/Main Campus
183	May 27, 2016	Ann B. Pearson	Leased Property	Academic	4.58 acres/Leased	Sunny Slope
184	March 16, 2017	T.K. Bullock	\$128,000.00	Research	80 acres	Covington County - Solon Dixon Center
185	March 31, 2017	Biggin/Woltosz House		Academic		North College
<b>TOTAL</b>			41,276,341.04			

**AUBURN UNIVERSITY AT MONTGOMERY**  
**SUMMARY OF REAL ESTATE HOLDINGS FY 2017**  
June 9, 2017

**AUBURN UNIVERSITY REAL ESTATE**

DEED FILE NUMBER	DATE OF ACQUISITION	FROM WHOM ACQUIRED	ORIGINAL COST / FMV	CURRENT USE	ACREAGE / RESTRICTIONS	LOCATION OF PARCEL
1	July 29, 1969	McLemore Family	\$744,135.00	Academic	498.2 acres	AUM, Montgomery County
3B		Waller	40,000.00			AUM, Montgomery County
4	February 2, 2006	Cauthen Property (Hyundai)	162,900.00	Reserve	1.15 acres	AUM, Montgomery County
4	February 2, 2006	Cauthen Property (US 331))	350,900.00	Reserve	5.59 acres	AUM, Montgomery County
5	November 6, 2009	Beck Property (Bell Rd / I-85)	350,000	Reserve	8.57 acres	AUM, Montgomery County
6	October 30, 2015	Prescott Property	400,000.00	Reserve	6 acres	AUM, Montgomery County
7	February 23, 2016	McMahon Property	2,650,000.00	Reserve	22 Acres	AUM, Montgomery County
<b>TOTALS</b>			<b>\$4,697,935.00</b>			



**AUBURN UNIVERSITY  
REAL ESTATE TRANSACTIONS FY-2016  
June 9, 2017**

**Auburn University Real Estate Department**

DIVISION I:                    AUBURN UNIVERSITY

1. Ann Pearson - Sunny Slope. AU has a lease on property from the Life Estate of Ann Pearson on the Sunny Slope property at XXX South College Street, Auburn, AL. The property will be donated to Auburn University at the death of Ms. Pearson.
2. Biggin/Woltosz House. AU has accepted the donation of a house at XXX N. College Street, Auburn, AL from Walt and Ginger Woltosz. The property will be used by the CADC for meetings, lectures, and visiting faculty housing.

DIVISION II:                    AUBURN UNIVERSITY AT MONTGOMERY

No conveyances reported.

DIVISION III:                    ALABAMA AGRICULTURAL EXPERIMENT STATION

1. T.K. Bullock Property. AU has purchased 80 acres of property in Covington County, adjacent to the Solon Dixon Center. The property will be used by the Solon Dixon Center as additional harvestable timber land.

DIVISION IV:                    ALABAMA COOPERATIVE EXTENSION SYSTEM

No conveyances reported.



## PROPERTY AND FACILITIES COMMITTEE

### STATUS UPDATES

Time will be allocated for status updates.



---

**TO:** JAY GOGUE, President  
**THROUGH:** DONALD L. LARGE, Executive Vice President  
**FROM:** DAN KING, Associate Vice President for Facilities  
**SUBJECT:** PROPERTY AND FACILITIES COMMITTEE  
**CURRENT STATUS OF NEW CONSTRUCTION/RENOVATION/  
INFRASTRUCTURE PROJECTS WITH BUDGETS OF \$1,000,000 AND GREATER  
(INFORMATION ONLY)**  
**DATE:** MAY 18, 2017

---

This is to request that the following proposal be submitted to the Property and Facilities Committee and included on the agenda of the Board of Trustees meeting scheduled for June 9, 2017.

**Proposal:**

Consistent with standing practice, it is proposed that the current status report of new construction/renovation/infrastructure projects with budgets greater than \$1,000,000 be submitted, *for information only*, to the Board of Trustees through the Property and Facilities Committee.

**Review and Consultation:**

The Board of Trustees at its meeting on June 4, 2001, requested that it receive a regular update on the financial status of Board approved projects. The attached list includes projects at Auburn University and outlying units.

**Rationale for Recommendation:**

Consistent with the request of the Board of Trustees for a current status report of new construction/renovation/infrastructure projects with budgets greater than \$1,000,000, the attached listing is provided, *for information only*, to the Board through the Property and Facilities Committee for inclusion on the agenda of the meeting scheduled for June 9, 2017.

Data as of 04/20/2017

## *Auburn University Facilities Management*

### Current Capital Projects

(Spending across Multiple Years)

### *Summary of Cash Flow by Project Phase*

<i>Project Phase</i>	<i>Previous Approved Budget Amount</i>	<i>Current Approved Budget Amount</i>	<i>Actual Spending to Date (across multiple years)</i>	<i>Estimated Spending Assuming Remainder of Budget for FY2017</i>	<i>Estimated Spending Assuming Remainder of Budget for FY2018 &amp; Forward</i>
Substantial Completion	91,945,000	29,122,977	26,389,876	2,078,033	0 *
Construction	138,529,172	158,151,195	62,694,076	63,247,381	32,209,738
Design	194,010,768	212,076,168	9,274,193	21,467,546	181,334,429
Planning	35,923,822	18,976,453	1,526,032	8,194,572	9,255,849
Totals	460,408,762	418,326,793	99,884,177	94,987,532	222,800,016 *
Other Open Capital Projects	50,662,067	55,586,834	23,154,525	12,972,924	19,459,385
Grand Totals	511,070,829	473,913,627	123,038,702	107,960,456	242,259,401 *

\* On the lines with asterisks, the sum of the spending columns does not equal the current approved budget figure. The reason relates to one project: (1) "Offsite Library Archiving Facility" project under budget by \$655,068.

## Current Capital Projects

## ESTIMATED CASHFLOW MATRIX and ACTUAL SPENDING and ENCUMBRANCE ACTIVITY

<i>Project Name</i>	<i>Project Phase</i>	<i>Original Approved Budget Amount</i>	<i>(A)</i>		<i>AU Bond Funding</i>	<i>Federal/ State or Local Funding</i>	<i>(B)</i>		<i>Estimated Spending Assuming Remainder of Budget for FY2018 &amp; Forward</i>	<i>(C)</i>	<i>(A)-(B)-(C)</i>	
			<i>Current Approved Budget Amount</i>	<i>AU Funding (includes gifts/grants)</i>			<i>Actual Spending to Date (across multiple years)</i>	<i>Estimated Spending Assuming Remainder of Budget for FY2017</i>		<i>Current Encumbrances Against Project</i>	<i>Current Open Balance (Budget less Actuals and Encumbrances)</i>	
<b>SUBSTANTIAL COMPLETION PHASE</b>												
Offsite Library Archiving Facility 15-142	Completed	1,900,000	1,900,000	1,900,000			1,244,932	0	0	0	0	*
AU Regional Airport T-Hangar Construction Phase I 15-093	Substantial Completion	2,000,000	2,000,000	2,000,000			1,976,208	23,792	0	0	23,792	
Cater Hall Repair & Renovation Phase II 15-334	Substantial Completion	1,950,000	1,950,000	1,950,000			1,619,313	330,687	0	44,134	286,553	
Auburn Arena Volleyball Team Space Improvements 14-273	Substantial Completion	2,200,000	2,200,000	2,200,000			1,970,874	229,126	0	3,402	225,724	
Health Science Sector Infrastructure 15-222	Substantial Completion	6,000,000	6,000,000	6,000,000			5,397,030	602,970	0	472,234	130,736	
Garden of Memory - Student Memorial 14-336	Substantial Completion	1,250,000	1,250,000	1,250,000			1,108,353	141,647	0	64,595	77,052	
Auburn University Hotel Governor's Room, Board Room, & Restroom Renovations 15-326	Substantial Completion	995,000	995,000	995,000			851,731	143,269	0	26,909	116,360	
Jordan-Hare Stadium Improvements: Phase 1 Storm Drain & Sewer Repairs 15-056	Substantial Completion	4,500,000	12,827,977	12,827,977			12,221,435	606,542	0	324,308	282,234	
<b>Total Substantial Completion</b>			29,122,977	29,122,977	0	0	26,389,876	2,078,033	0	935,582	1,142,451	*

**ESTIMATED CASHFLOW MATRIX and ACTUAL SPENDING and ENCUMBRANCE ACTIVITY**

<i>Project Name</i>	<i>Project Phase</i>	<i>Original Approved Budget Amount</i>	<i>(A) Current Approved Budget Amount</i>	<i>AU Funding (includes gifts/grants)</i>	<i>AU Bond Funding</i>	<i>Federal/ State or Local Funding</i>	<i>(B) Actual Spending to Date (across multiple years)</i>	<i>Estimated Spending Assuming Remainder of Budget for FY2017</i>	<i>Estimated Spending Assuming Remainder of Budget for FY2018 &amp; Forward</i>	<i>(C) Current Encumbrances Against Project</i>	<i>(A)-(B)-(C) Current Open Balance (Budget less Actuals and Encumbrances)</i>
<b>CONSTRUCTION PHASE</b>											
Mell Classroom Building 11-209	Construction	25,000,000	35,000,000	31,500,000	3,500,000		19,349,187	14,650,813	1,000,000	12,404,593	3,246,220
Risk Management and Safety Facility - New Building 15-150	Construction	2,800,000	2,800,000	2,800,000			1,729,647	1,070,353	0	777,271	293,082
School of Nursing Facility 15-035	Construction	29,000,000	29,000,000	29,000,000			15,068,457	12,431,543	1,500,000	11,062,194	2,869,349
Pharmaceutical Research Building 14-193	Construction	16,600,000	16,600,000	16,600,000			12,791,399	3,308,601	500,000	3,213,195	595,406
Band Practice Field - New Storage & Dressing Facility 15-256	Construction	3,000,000	3,000,000	3,000,000			2,192,139	807,861	0	518,602	289,259
Food Animal Research Facility 15-130	Construction	3,400,000	3,400,000	3,400,000			2,233,703	1,107,982	58,315	556,359	609,938
President's House Renovation 14-296	Construction	11,051,195	11,051,195	11,051,195			2,783,785	6,613,928	1,653,482	6,934,948	1,332,462
Auburn University Hotel Porte-Cochere & Front Drive Improvements 13-268	Construction	1,200,000	1,200,000	1,200,000			639,639	504,325	56,036	434,453	125,908
Gavin Engineering Research Laboratory - Comprehensive Renovations 14-308	Construction	16,750,000	16,750,000	16,750,000			2,353,959	12,956,437	1,439,604	12,187,623	2,208,418
Broun Hall Building Wide Renovation 15-068	Construction	5,000,000	5,000,000	5,000,000			821,815	3,969,276	208,909	2,742,827	1,435,358

**ESTIMATED CASHFLOW MATRIX and ACTUAL SPENDING and ENCUMBRANCE ACTIVITY**

<i>Project Name</i>	<i>Project Phase</i>	<i>Original Approved Budget Amount</i>	<i>(A)</i>		<i>AU Bond Funding</i>	<i>Federal/ State or Local Funding</i>	<i>(B)</i>		<i>Estimated Spending Assuming Remainder of Budget for FY2018 &amp; Forward</i>	<i>(C)</i>	
			<i>Current Approved Budget Amount</i>	<i>AU Funding (includes gifts/grants)</i>			<i>Actual Spending to Date (across multiple years)</i>	<i>Estimated Spending Assuming Remainder of Budget for FY2017</i>		<i>Current Encum- brances Against Project</i>	<i>(A)-(B)-(C)  Current Open Balance (Budget less Actuals and Encum- brances)</i>
Jordan-Hare Stadium - North Main Concourse Expansion 16-332	Construction	1,900,000	1,900,000	1,900,000			540,356	1,223,680	135,964	936,522	423,122
Leach Science Ctr - Building Expansion & Partial Renovation 15-208	Construction	19,000,000	24,000,000	24,000,000			1,601,229	671,963	21,726,808	16,595,989	5,802,782
Public Safety & Security Bldg - Building Renovation & Expansion 16-119	Construction	4,800,000	4,800,000	4,800,000			366,272	2,216,864	2,216,864	3,346,092	1,087,636
AU Hotel & Dixon Conf Ctr - Comprehensive Renovation Of The Conference Center 15-274	Construction	3,650,000	3,650,000	3,650,000			222,489	1,713,755	1,713,756	45,162	3,382,349
<b>Total Construction</b>			158,151,195	154,651,195	3,500,000	0	62,694,076	63,247,381	32,209,738	71,755,830	23,701,289

## Current Capital Projects

## ESTIMATED CASHFLOW MATRIX and ACTUAL SPENDING and ENCUMBRANCE ACTIVITY

Project Name	Project Phase	Original Approved Budget Amount	(A)		AU Bond Funding	Federal/ State or Local Funding	(B)		Estimated Spending Assuming Remainder of Budget for FY2018 & Forward	(C)	(A)-(B)-(C)	
			Current Approved Budget Amount	AU Funding (includes gifts/grants)			Actual Spending to Date (across multiple years)	Estimated Spending Assuming Remainder of Budget for FY2017		Current Encumbrances Against Project	Current Open Balance (Budget less Actuals and Encumbrances)	
<b>DESIGN PHASE</b>												
Ag Heritage Park 98-333	Construction and Design Future Projects	2,666,320	2,666,320	2,666,320			1,427,581	0	1,238,739	0	1,238,739	
Hill Residence Halls - Building Renovations & Upgrades 10-155	Design (Partial budget - Phase I only at this point)	15,859,848	15,859,848	13,373,258	2,486,590		2,125,099	100,000	13,634,749	1,129,562	12,605,187	
Goodwin Hall - Renovation & Band Rehearsal Hall Addition 15-255	Design & Development	5,500,000	5,500,000	5,500,000			93,741	1,351,565	4,054,694	393,598	5,012,661	
AU Regional Airport - Aviation Education Facility 13-285	Bidding	8,700,000	8,700,000	3,700,000		5,000,000	381,968	1,000,000	7,318,032	133,053	8,184,979	
Engineering Achievement Center 15-157	Bidding	39,750,000	39,750,000	39,750,000			2,073,996	4,000,000	33,676,004	918,503	36,757,501	
Performing Arts Center - New Building 15-158	Design Development	65,000,000	65,000,000	65,000,000			2,478,415	2,000,000	60,521,585	1,494,635	61,026,950	
AU Regional Airport - South Ramp, New Maintenance Hangar 16-246	Bidding	1,700,000	1,700,000	1,700,000			71,384	814,308	814,308	64,166	1,564,450	
AU Rec. & Wellness Ctr - Basement, Build-Out For Personal Training & Weightlifting Center 16-249	Construction Contract	2,900,000	2,900,000	2,900,000			145,194	2,754,806	0	14,901	2,739,905	
Jordan-Hare Stadium Gameday Support Facility and Locker Room Renovation 16-324	Construction Contract	28,000,000	28,000,000	28,000,000			211,060	3,500,000	24,288,940	3,557,300	24,231,640	
Graduate Business Education Bldg 14-044	Design Development	30,000,000	30,000,000	30,000,000			265,664	5,946,867	23,787,469	111,674	29,622,662	

**ESTIMATED CASHFLOW MATRIX and ACTUAL SPENDING and ENCUMBRANCE ACTIVITY**

<i>Project Name</i>	<i>Project Phase</i>	<i>Original Approved Budget Amount</i>	<i>(A)</i>		<i>AU Bond Funding</i>	<i>Federal/ State or Local Funding</i>	<i>(B)</i>		<i>Estimated Spending Assuming Remainder of Budget for FY2018 &amp; Forward</i>	<i>(C)</i>	<i>(A)-(B)-(C)</i>	
			<i>Current Approved Budget Amount</i>	<i>AU Funding (includes gifts/grants)</i>			<i>Actual Spending to Date (across multiple years)</i>	<i>Estimated Spending Assuming Remainder of Budget for FY2017</i>		<i>Current Encumbrances Against Project</i>	<i>Current Open Balance (Budget less Actuals and Encumbrances)</i>	
Jordan-Hare Stadium - Press Box Renovations 16-500	Pre-Design	12,000,000	12,000,000	12,000,000			91	0	11,999,909	0	11,999,909	
<b>Total Design</b>			212,076,168	204,589,578	2,486,590	5,000,000	9,274,193	21,467,546	181,334,429	7,817,392	194,984,583	



## Current Capital Projects

## ESTIMATED CASHFLOW MATRIX and ACTUAL SPENDING and ENCUMBRANCE ACTIVITY

<i>Project Name</i>	<i>Project Phase</i>	<i>Original Approved Budget Amount</i>	<i>(A) Current Approved Budget Amount</i>	<i>AU Funding (includes gifts/grants)</i>	<i>AU Bond Funding</i>	<i>Federal/ State or Local Funding</i>	<i>(B) Actual Spending to Date (across multiple years)</i>	<i>Estimated Spending Assuming Remainder of Budget for FY2017</i>	<i>Estimated Spending Assuming Remainder of Budget for FY2018 &amp; Forward</i>	<i>(C) Current Encumbrances Against Project</i>	<i>(A)-(B)-(C) Current Open Balance (Budget less Actuals and Encumbrances)</i>
<b>PLANNING PHASE</b>											
Academic Classroom & Laboratory Complex 15-034	Programing (Partial budget only at this point)	4,047,007	4,047,007	4,047,007			929,140	1,558,933	1,558,934	0	3,117,867
Mell Street, West Samford Avenue, & Thach Avenue Traffic & Parking Improvements 15-311	Construction Documents (Partial budget only at this point)	4,000,000	4,000,000	4,000,000			141,865	3,086,508	771,627	183,203	3,674,932
Poultry Research Farm Unit Relocation Phase II 16-040	Construction Documents (Partial budget only at this point)	2,950,000	2,950,000	2,950,000			108,145	568,371	2,273,484	17,715	2,824,140
Agricultural Sciences Research Building - New Facility 15-391	Pre-Design (Partial budget only at this point)	170,500	170,500	170,500			150,900	19,600	0	0	19,600
Interdisciplinary Science Building - New Facility 15-392	Pre-Design (Partial budget only at this point)	208,946	208,946	208,946			125,756	83,190	0	66,110	17,080
Bailey Small Animal Hospital - Basement, Build-Out For Clinical Pharmacology Lab & Research Space 16-260	Design Development (Partial budget only at this point)	2,300,000	2,300,000	2,300,000			13,308	1,829,354	457,338	79,510	2,207,182
Haley Center - Renovations For Relocation Of Mathematics & Statistics Department 16-110	Schematic Design (Partial budget only at this point)	500,000	500,000	500,000			55,758	88,848	355,394	246,833	197,409
North Auburn - New Poultry Science Infectious Disease Laboratory 16-485	Construction Documents (Partial budget only at this point)	2,700,000	2,700,000	2,700,000			500	539,900	2,159,600	85,510	2,613,990
North Auburn - New Fisheries Biodiversity Research Laboratory 16-486	Construction Documents (Partial budget only at this point)	2,100,000	2,100,000	2,100,000			660	419,868	1,679,472	64,018	2,035,322
<b>Total Planning</b>			18,976,453	18,976,453	0	0	1,526,032	8,194,572	9,255,849	742,899	16,707,522
Current Capital Projects	Various Stages		55,586,834	48,751,385	0	6,835,449	23,154,525	12,972,924	19,459,385	9,189,665	23,242,644

## Current Capital Projects

## ESTIMATED CASHFLOW MATRIX and ACTUAL SPENDING and ENCUMBRANCE ACTIVITY

Project Name	Project Phase	Original Approved Budget Amount	(A)	AU Funding (includes gifts/grants)	AU Bond Funding	Federal/ State or Local Funding	(B)	Estimated Spending Assuming Remainder of Budget for FY2017	Estimated Spending Assuming Remainder of Budget for FY2018 & Forward		(C)	(A)-(B)-(C)	
			Current Approved Budget Amount				Actual Spending to Date (across multiple years)				Current Encumbrances Against Project	Current Open Balance (Budget less Actuals and Encumbrances)	
GRAND TOTAL			473,913,627	456,091,588	5,986,590	11,835,449	123,038,702	107,960,456	242,259,401		90,441,368	259,778,489	*

\* On the lines with asterisks, the sum of the spending columns does not equal the current approved budget figure. The reason relates to one project: (1) "Offsite Library Archiving Facility" project under budget by \$655,068.



---

**TO:** JAY GOGUE, President  
**THROUGH:** DONALD L. LARGE, Executive Vice President  
**FROM:** DAN KING, Associate Vice President for Facilities  
**SUBJECT:** PROPERTY AND FACILITIES COMMITTEE  
**PROJECT STATUS REPORT**  
**DATE:** MAY 18, 2017

---

This memorandum requests the following proposal be presented to the Board of Trustees through the Property and Facilities Committee and included on the agenda at the meeting scheduled for June 9, 2017.

**Proposal:**

It is proposed that a brief report regarding the status of Board of Trustees approved capital projects be submitted, *for information only*, to the Board of Trustees through the Property and Facilities Committee.

**Review and Consultation:**

The responsibility of the Board of Trustees extends to the oversight of funding, planning, design, construction, maintenance and operation of University buildings and facilities. The date of project establishment in the development process is often separated by years from the date of project completion or building dedication. This Project Status Report is intended to continually inform interested parties of the status of projects previously approved by the Board of Trustees.

**PROJECT/PHASE****STATUS****Projects in Planning Stage:**

- Equine Sciences – New Facilities Phase I On hold pending funding
- Agricultural Sciences Research Building Initiated November 2015
- Interdisciplinary Science Building Initiated November 2015
- Academic Classroom & Laboratory Complex Initiated February 2015
- AUM Admissions & Alumni Center Initiated September 2015
- Culinary Arts Building Initiated September 2016
- New Student Housing Initiated September 2016
- Equestrian Facility Improvements Initiated February 2017

**Projects in Design Stage:**

- Relocation of Sports Medicine and Other Team Functions from the Coliseum
- Jordan-Hare Stadium Improvements
- Campus Utility System Expansion
- Haley Center Quad Renovation

**Initiation Approved**

On hold

Initiated February 2015

Initiated June 2015

Initiated June 2016

**Schematic Design Approved:**

- Graduate Business Education Building
- Performing Arts Center
- Brown-Kopel Engineering Student Achievement Center
- Airport Aviation Education Facility
- Poultry Infectious Disease Biocontainment Research Facility Relocation
- Fisheries Biodiversity Laboratory Relocation
- Jordan-Hare Stadium Press Box Renovation
- Poultry Research Farm Unit Relocation Phase II
- Mell Street and Thach Ave Traffic and Parking Improvements
- Airport Maintenance Hangar
- Bailey Small Animal Teaching Hospital Basement Build-Out
- Band Building Phase III

**Schematic Design Approved**

Approved September 2016

Approved February 2017

Approved February 2017

Approved February 2017

Approved April 2017

Approved April 2017

Approved April 2017

Approved April 2017

Approved April 2017

Approved April 2017

Approved April 2017

Approved April 2017

**Projects in Construction Stage:**

- Food Animal Research Facility Approved September 2015
- Pharmaceutical Research Building Approved November 2015
- School of Nursing Facility Approved November 2015
- Mell Classroom Building Approved February 2016
- Band Practice Complex—Dressing Rooms, Storage & Turf Approved February 2016
- AUHCC Porte-Cochere & Front Drive Improvements Approved February 2016
- Repairs and Renovations to President's Home Approved April 2016
- Gavin Engineering Research Lab Renovation Approved June 2016
- Broun Hall Renovation Approved June 2016
- L-Building & Engineering Shop Buildings Demolition Information Only September 2016
- Jordan-Hare Stadium North Main Concourse Widening Approved November 2016
- Public Safety Building Expansion Approved November 2016
- AUHCC Ballroom Renovation Approved February 2017
- Recreation & Wellness Center Basement Build-Out Approved February 2017

- Jordan-Hare Stadium Gameday Support Facility and Locker Room Renovation
- Leach Science Center Addition

Approved February 2017

Approved April 2017

**Recently Completed:**

- Risk Management & Safety Building

Completed April 2017

## ACADEMIC AFFAIRS COMMITTEE

### RESOLUTION

#### PROPOSED DEGREE RENAMINGS IN THE COLLEGE OF AGRICULTURE

WHEREAS, the College of Agriculture supports Alabama's agricultural industry by preparing graduates to work in diverse professional, manufacturing, and production fields; and

WHEREAS, agriculture continues to remain one of the top industries in the State, resulting in consistent economic growth and employment opportunities; and

WHEREAS, the Department of Animal Sciences; the Department of Crop, Soil, and Environmental Sciences; and the School of Fisheries, Aquaculture, and Aquatic Sciences currently offer undergraduate and graduate degrees across diverse agricultural fields; and

WHEREAS, these units have proposed new names for certain degrees in order to align with current industry practices and to reflect a greater breadth of topics and approaches necessary for work in various agricultural fields; and

WHEREAS, the proposal has been endorsed by the Dean of the College of Agriculture, the University Curriculum Committee, the Graduate Council, the Provost, and the President.

NOW, THEREFORE, BE IT RESOLVED by Auburn University's Board of Trustees that the renaming of the following degree programs be approved, with notice of the changes in nomenclature being sent to the Alabama Commission on Higher Education as items of information:

- *BS in Animal Sciences—Production Management Option* as the *BS in Animal Sciences—Animal and Allied Industries Option*
- *BS in Animal Sciences—Muscle Foods Science Option* as the *BS in Animal Sciences—Meat Science Option*
- *BS in Agronomy and Soils—Production Option* as the *BS in Crop and Soil Sciences—Production Option*
- *BS in Agronomy and Soils—Science Option* as the *BS in Crop and Soil Sciences—Science Option*
- *BS in Agronomy and Soils—Soil, Water, and Land Use Option* as the *BS in Crop and Soil Sciences—Soil, Water, and Land Use Option*
- *BS in Agronomy and Soils—Turfgrass Option* as the *BS in Crop and Soil Sciences—Turfgrass Option*
- *MAG in Agronomy and Soils* as the *MAG in Crop, Soil, and Environmental Sciences*
- *MS in Agronomy and Soils* as the *MS in Crop, Soil, and Environmental Sciences*

- *PhD in Agronomy and Soils as the PhD in Crop, Soil, and Environmental Sciences*
- *MAq in Fisheries as the MAq in Fisheries, Aquaculture, and Aquatic Sciences*
- *MS in Fisheries as the MS in Fisheries, Aquaculture, and Aquatic Sciences*
- *PhD in Fisheries as the PhD in Fisheries, Aquaculture, and Aquatic Sciences.*




AUBURN UNIVERSITY

OFFICE OF THE PROVOST  
AND VICE PRESIDENT FOR  
ACADEMIC AFFAIRS

April 30, 2017

MEMORANDUM TO: Jay Gogue  
President

FROM: Timothy R. Boosinger   
Provost and Vice President for Academic Affairs

SUBJECT: Agenda Item for the Board of Trustees –  
Proposed Renaming of Programs in the College of Agriculture

I am writing to request that the following item be added to the Board of Trustees' agenda for the **June 9, 2017** meeting.

**Proposal:** Faculty in the College of Agriculture are proposing degree renamings for multiple programs in the Department of Animal Sciences, the Department of Crop, Soil and Environmental Sciences, and the School of Fisheries, Aquaculture, and Aquatic Sciences. The proposed renamings reflect programmatic revisions and do not require a change in CIP codes.

**Review and Consultation:** Faculty in these units initiated the renamings in an effort to better reflect the range of programs and skills provided to students. While the College continues to excel at its ability to prepare professionals to work across diverse agricultural fields, the proposed renamings enable the units to offer degrees that align with current industry nomenclature and reflect a greater breadth of topics, practices, and practical approaches necessary for work in the agricultural industries. The proposed renamings include:

Department of Animal Sciences

1. *BS in Animal Sciences—Production Management Option* as the *BS in Animal Science—Animal and Allied Industries Option*
2. *BS in Animal Sciences—Muscle Foods Science Option* as the *BS in Animal Sciences—Meat Science Option*

Department of Crop, Soil, and Environmental Sciences

3. *BS in Agronomy and Soils—Production Option* as the *BS in Crop and Soil Sciences—Production Option*



4. *BS in Agronomy and Soils—Science Option* as the *BS in Crop and Soil Sciences—Science Option*
5. *BS in Agronomy and Soils—Soil, Water, and Land Use Option* as the *BS in Crop and Soil Sciences—Soil, Water, and Land Use Option*
6. *BS in Agronomy and Soils—Turfgrass Option* as the *BS in Crop and Soil Sciences—Turfgrass Option*
7. *MAG in Agronomy and Soils* as the *MAG in Crop, Soil, and Environmental Sciences*
8. *MS in Agronomy and Soils* as the *MS in Crop, Soil, and Environmental Sciences*
9. *PhD in Agronomy and Soils* as the *PhD in Crop, Soil, and Environmental Sciences*

School of Fisheries, Aquaculture, and Aquatic Sciences

10. *MAq in Fisheries* as the *MAq in Fisheries, Aquaculture, and Aquatic Sciences*
11. *MS in Fisheries* as the *MS in Fisheries, Aquaculture, and Aquatic Sciences*
12. *PhD in Fisheries* as the *PhD in Fisheries, Aquaculture, and Aquatic Science*

**Recommendation:** It is recommended that the Board approve the proposed renamings in the Department of Animal Sciences, the Department of Crop, Soil, and Environmental Sciences, and the School of Fisheries, Aquaculture, and Aquatic Sciences. The proposal was reviewed and approved by Auburn University’s Curriculum Committee and the Graduate Council in spring 2017, and has been approved by the College Agriculture and the Provost’s Office. If approved by the Board of Trustees, the proposed changes in nomenclature will be submitted to the Alabama Commission on Higher Education as items of information.



April 6, 2017

**TO:** **Timothy Boosinger**  
Provost and Vice-President for Academic Affairs

**THROUGH:** **George Flowers** *George T. Flowers*  
Dean, Graduate School

**Constance Relihan** *CR*  
Associate Provost for Undergraduate Studies

**Paul Patterson** *Paul Patterson*  
Dean, College of Agriculture

**FROM:** **Wayne Greene** *Wayne Greene*  
Head, Department of Animal Sciences

**John Beasley** *John Beasley*  
Head, Department of Crop, Soil, and Environmental Sciences

**Joseph Tomasso Jr.**  
Director, School of Fisheries, Aquaculture, and Aquatic Sciences

**SUBJECT:** Item for the Board of Trustees-Renaming of Programs

We are writing to request the following items be added to the Board of Trustees agenda for their June 9, 2017 meeting.

**Proposal:** The Department of Animal Sciences within the College of Agriculture is proposing the renaming of the following programs.

Current Name	Proposed Name	CIP
BS in Animal Sciences – Production Management Option	BS in Animal Science – Animal and Allied Industries Option	01.0901
BS in Animal Sciences – Muscle Foods Science Option	BS in Animal Science – Meat Science Option	01.0901

The Department of Crop, Soil, and Environmental Sciences within the College of Agriculture is proposing the renaming of the following programs.

Current Name	Proposed Name	CIP
BS in Agronomy and Soils – Production Option	BS in Crop and Soil Sciences – Production Option	01.1102
BS in Agronomy and Soils – Science Option	BS in Crop and Soil Sciences – Science Option	01.1102
BS in Agronomy and Soils- Soil, Water, and Land Use Option	BS in Crop and Soil Sciences – Soil, Water, and Land Use Option	01.1102
BS in Agronomy and Soils- Turfgrass Option	BS in Crop and Soil Sciences – Turfgrass Option	01.1102
MAG in Agronomy and Soils-	MAG in Crop, Soil and Environmental Sciences	01.1199
MS in Agronomy and Soils	MS in Crop, Soil, and Environmental Sciences	01.1199
PhD in Agronomy and Soils	PhD in Crop, Soil, and Environmental Sciences	01.1199

The School of Fisheries, Aquaculture, and Aquatic Sciences within the College of Agriculture is proposing the renaming of the following programs.

Current Name	Proposed Name	CIP
MAq in Fisheries	MAq in Fisheries, Aquaculture, and Aquatic Sciences	01.0303
MS in Fisheries	MS in Fisheries, Aquaculture, and Aquatic Sciences	01.0303
PhD in Fisheries	PhD in Fisheries, Aquaculture, and Aquatic Sciences	01.0303

There will be no change in CIP Codes associated with renaming request. If approved by the Offices of the Provost and the President, the proposed program changes would be forwarded to Auburn University's Board of Trustees for review and approval.

**Review and Consultation:** The proposed changes will bring the program names into alignment with current standards of relevant accrediting bodies and constituencies and better reflect the nature of the programs. The proposals were reviewed by Auburn University's Undergraduate Curriculum Committee and Graduate Council and received approval in February and March 2017.

**Recommendation:** It is recommended that the program changes be approved and forwarded to Auburn University's Board of Trustees for review and approval.

## ACADEMIC AFFAIRS COMMITTEE

### RESOLUTION

#### PROPOSED PLACEMENT ON INACTIVE STATUS OF THE MASTER OF INTEGRATED DESIGN AND CONSTRUCTION

WHEREAS, the College of Architecture, Design and Construction currently offers a program of study leading to the degree of Master of Integrated Design and Construction, organized as two coordinated tracks, administered jointly by the McWhorter School of Building Science and the School of Architecture, Planning and Landscape Architecture; and

WHEREAS, the educational goals of this program require approximately equal enrollment of students in each track for successful simulation of integrated project delivery teams; and

WHEREAS, increases high-paying job opportunities for graduates of bachelor's-level Construction programs have diminished student demand for the Construction track of this integrated program; and

WHEREAS, no students have been enrolled in the program since Summer 2015; and

WHEREAS, faculty in the McWhorter School of Building Science and the School of Architecture, Design and Construction have unanimously approved a temporary suspension of the program in order to evaluate its long-term feasibility and its use of resources that might be better reallocated to other programs; and

WHEREAS, the Alabama Commission on Higher Education allows approved programs to be placed on inactive status for a period of five years; and

WHEREAS, the proposal to place the Master of Integrated Design and Construction on inactive status has been reviewed and approved by the Dean of the College of Architecture, Design and Construction; the Graduate Council; the Academic Program Review Committee; the Provost; and the President.

NOW, THEREFORE, BE IT RESOLVED by Auburn University's Board of Trustees that the proposal to place the Master of Integrated Design and Construction on inactive status, effective Fall 2017, be approved and reported to the Alabama Commission on Higher Education as an item of information.




AUBURN UNIVERSITY

OFFICE OF THE PROVOST  
AND VICE PRESIDENT FOR  
ACADEMIC AFFAIRS

April 30, 2017

MEMORANDUM TO: Jay Gogue  
President

FROM: Timothy R. Boosinger   
Provost and Vice President for Academic Affairs

SUBJECT: Agenda Item for the Board of Trustees –  
Proposed Placement of the Master of Integrated Design and  
Construction on Inactive Status

I am writing to request that the following item be added to the Board of Trustees' agenda for the **June 8, 2017** meeting.

**Proposal:** Faculty in the McWhorter School of Building Science and the School of Architecture, Planning and Landscape Architecture in the College of Architecture, Design and Construction are proposing the placement of the Master of Integrated Design and Construction on inactive status, effective upon receipt by the Alabama Commission on Higher Education.

**Review and Consultation:** The Master of Integrated Design and Construction degree was established in 2008 to provide students with a unique degree program that combined the architecture and building science disciplines with the professional practice of integrated design and construction. The program is designed to provide professional opportunities for students with academic backgrounds in both Architecture and Building Science, and requires equal enrollment of students in both programs to successfully administer. Since 2011, enrollment among Building Science students has steadily declined due to increases in professional opportunities for entry-level students with Building Science degrees. No students have been enrolled in the program since 2015. Placing the program on inactive status allows the college to suspend it for up to five years, enabling the units to determine long-term feasibility as those students currently enrolled complete their degrees.

**Recommendation:** I recommend that the Board of Trustees approve the proposed placement of the Master of Integrated Design and Construction on inactive status. If approved, the request will be submitted to the Alabama Commission on Higher Education as an item of information.



COLLEGE OF ARCHITECTURE,  
DESIGN & CONSTRUCTION

OFFICE OF THE DEAN

**TO:** Dr. Timothy Boosinger  
Provost & Vice President for Academic Affairs

**THROUGH:** Dr. George Flowers *George T. Flowers*  
Dean, Graduate School *N. Nathan*

**THROUGH:** Dr. Vini Nathan  
Dean, College of Architecture, Design and Construction

**FROM:** Dr. Richard Burt *R. Burt*  
Head, McWhorter School of Building Science  
Charlene LeBleu *Charlene LeBleu*  
Interim Head, School of Architecture, Planning and Landscape Architecture

**DATE:** April 28, 2017

**SUBJECT:** Proposed Deactivation of the Master of Integrated Design and Construction (MIDC)

We request that the following proposal be added to the Board of Trustee's agenda for their June 9, 2017 meeting.

**Program Description and Action requested:** Faculty in the McWhorter School of Building Science and the School of Architecture, Planning and Landscape Architecture request the deactivation of the Master of Integrated Design and Construction program. This program was initiated in 2008 as the Master of Design Build; its name was changed in 2011 to the Master of Integrated Design and Construction. The program is administered jointly by the McWhorter School of Building Science and the School of Architecture, Planning and Landscape Architecture. Its purpose is to provide training in the area of integrated project delivery to students with undergraduate degrees in the disciplines of construction management and architecture. The curriculum structure thus incorporates a construction track and an architecture track, and requires an equal number of students in each track in order to function efficiently.

**Justification for Request:** The Master of Integrated Design and Construction represents a category of post-professional graduate programs that respond to specific market conditions and shifting needs within allied disciplines and professional practice by leveraging existing CADC expertise and assets.

Enrollment in the MIDC program from 2008 – 2014 averaged 11 – 12 students. However, since 2014 the program has experienced a significant decline in applications to the construction track of the program, due to a recent, steady increase in the number of high-

202 DUDLEY COMMONS  
AUBURN, AL 36849-5313

TELEPHONE:  
334-844-4524

FAX:  
334-844-2735



paying jobs available for graduates of bachelor's-level programs in construction management. Because the curriculum is designed around the pairing of students from each discipline in order to simulate professional integrated project delivery teams, the program is academically unsound without approximately the same number of students in each track. Deactivation does not imply the definitive closing of a program, but rather allows it to be suspended for up to five years. Deactivation of the MIDC will not affect any students, because there are currently no students enrolled in or being admitted to the program. No CADC faculty will be affected because there are no dedicated MIDC program faculty. The requested deactivation of the program will be effective Spring 2018.

In light of these considerations, the faculty of the two respective schools voted unanimously on October 19, 2015 (BSCI) and October 21, 2015 (APLA) to deactivate the program. In addition to the faculty vote, the decision has been consulted with the Architecture Advisory Council and the Building Science Industry Advisory Council, and approved by the CADC Curriculum Committee and the Auburn University Graduate Council. Per the Graduate School via email on April 28, 2017, this request has also been reviewed and approved by the Auburn University Academic Program Review Committee.

**Resource Requirements:** The limited resources assigned to the program will be reabsorbed by programs in the two schools to fund other long-standing priorities.

**Recommendation:** We recommend that the proposed deactivation of the Master of Integrated Design and Construction be approved by the Offices of the Provost and the President and be forwarded to the Board of Trustees and the Alabama Commission on Higher Education for review and approval.

AUDIT AND COMPLIANCE COMMITTEE

RESOLUTION

APPROVAL OF INDEPENDENT AUDITORS  
FOR FISCAL YEAR ENDED SEPTEMBER 30, 2017

WHEREAS, The Audit Committee of the Board of Trustees is charged with recommending the appointment of the University's external auditor; and

WHEREAS, The Audit Committee recommends the appointment of PricewaterhouseCoopers to audit the University's financial statements and to conduct the federally required A-133 audit.

NOW, THEREFORE, BE IT RESOLVED by the Board of Trustees of Auburn University that PricewaterhouseCoopers be appointed as the University's external auditor.






AUBURN UNIVERSITY

OFFICE OF THE VICE PRESIDENT FOR  
BUSINESS & FINANCE AND CFO

May 01, 2017

TO: President Jay Gogue

FROM: Kelli D. Shomaker   
Vice President for Business & Finance/CFO

RE: Presentation by External Auditors PricewaterhouseCoopers Regarding FY17 Audits  
And Approval of Auditors

Please allow time at the June 09, 2017 meeting of the Audit Committee of the Board of Trustees for our external auditors to communicate their responsibilities, the planned scope of the FY17 financial statements and A-133 audits, and the timing of the audits. Subject to a favorable review by the Audit Committee PricewaterhouseCoopers would be approved for the FY 17 audit.

Please let me know if you have additional questions.

AUDIT AND COMPLIANCE COMMITTEE

RECEIPT OF CODE OF ETHICS COMPLIANCE DOCUMENTS (BOB DUMAS)

Time will be allocated to report on the receipt of the 2016-2017 Code of Ethics Compliance Documents.

## EXECUTIVE COMMITTEE

### ELECTION OF OFFICER

Time will be allocated for election of the President Pro Tempore of the Auburn University Board of Trustees.

## EXECUTIVE COMMITTEE

### PROPOSED AWARDS AND NAMINGS

Time will be allocated for awards and namings.