

The background of the slide is a photograph of a laboratory setting. In the foreground, a multi-well microplate is visible, filled with numerous small, clear plastic wells. A pink pipette tip is positioned over one of the wells, suggesting a liquid transfer process. The background is slightly blurred, showing more laboratory equipment and a person in the distance. Overlaid on the left side of the image are several semi-transparent, overlapping circular shapes in shades of orange and pink, creating a modern, scientific aesthetic.

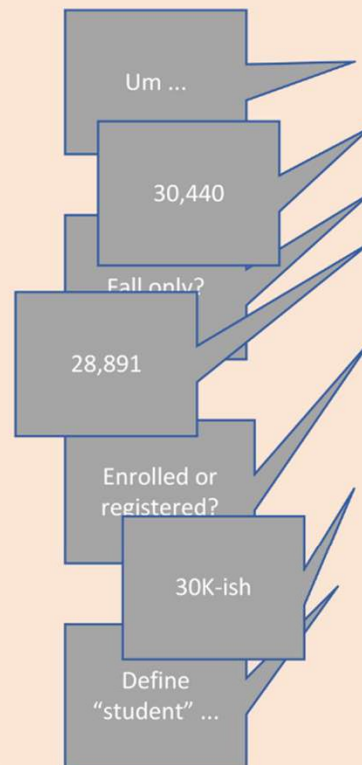
# DATA GOVERNANCE INITIATIVE

**Tyler Crawford**

**Information Technology, Data Modeler**

# WHY DATA GOVERNANCE?

We are here.



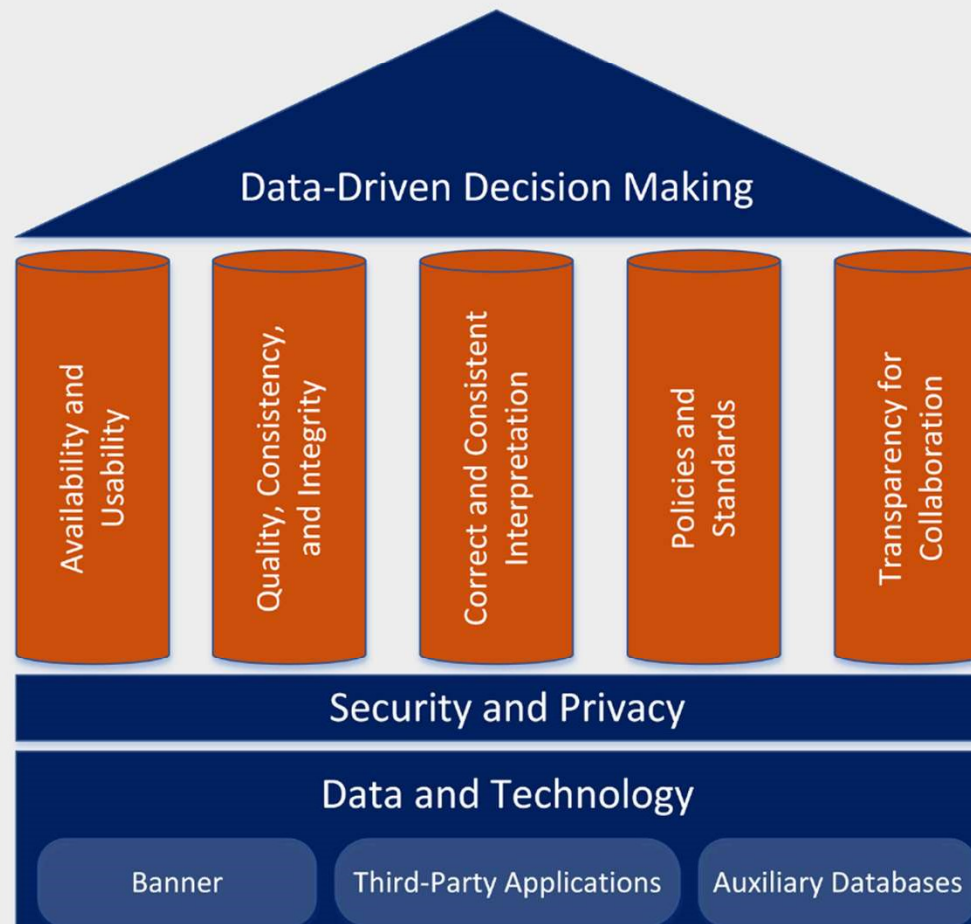
Data Governance is a process that requires participation and agreement from units across campus. We need your help.

We want to be here.



- Interactive visuals
- Clean data
- Standardized definitions

# PILLARS OF DATA GOVERNANCE





# PRINCIPLES OF DATA GOVERNANCE



- Auburn is the owner of all institutional data and will manage this data as a strategic asset.
- There is a common vocabulary and definition to describe each data element and data relationship. All data describing data (metadata) is stored and maintained in a shared repository.
- There is a single system of record for each University data element and unnecessary duplication of data across multiple information systems will be avoided.
- Institutional data must be stored in a secure manner. Access is provided to internal authorized users who have a legitimate need for the data based on their role in the University.
- Data is used only for the purposes for which use is authorized and authorization for access to data is not transferable.
- Decisions about data stewardship, access, quality, official system of record, and conflict resolution follow consistent processes.
- Management of data complies with legal requirements (FERPA, HIPAA, etc.), Auburn University internal policies, and privacy compliance.

# STATUS OF DATA GOVERNANCE

## Shared Responsibilities for the Data Life Cycle

### In Progress

#### Acquire

Create, capture, gather from activity:

- Applicants
- Students
- Graduates
- Alumni
- Faculty
- Staff
- Billing
- Vendors
- Financial Aid

Responsible Parties:

- Data Governance Council
- Data Stewards
- Data Custodians

### Next Steps

#### Clean

- Organize
- De-Duplicate
- Annotate
- Clean
- Combine
- Standardize
- Correct

Responsible Parties:

- Data Stewards
- Data Custodians

#### Use and Reuse

- Analyze
- Mine
- Model
- Derive
- Visualize
- Decide
- Act

Responsible Parties:

- Data Users

#### Publish

- Share within classification requirements:
- Portals
  - Aggregations
  - Websites
  - Executive Reports
  - Visualizations

Responsible Parties:

- Data Users

#### Preserve or Destroy

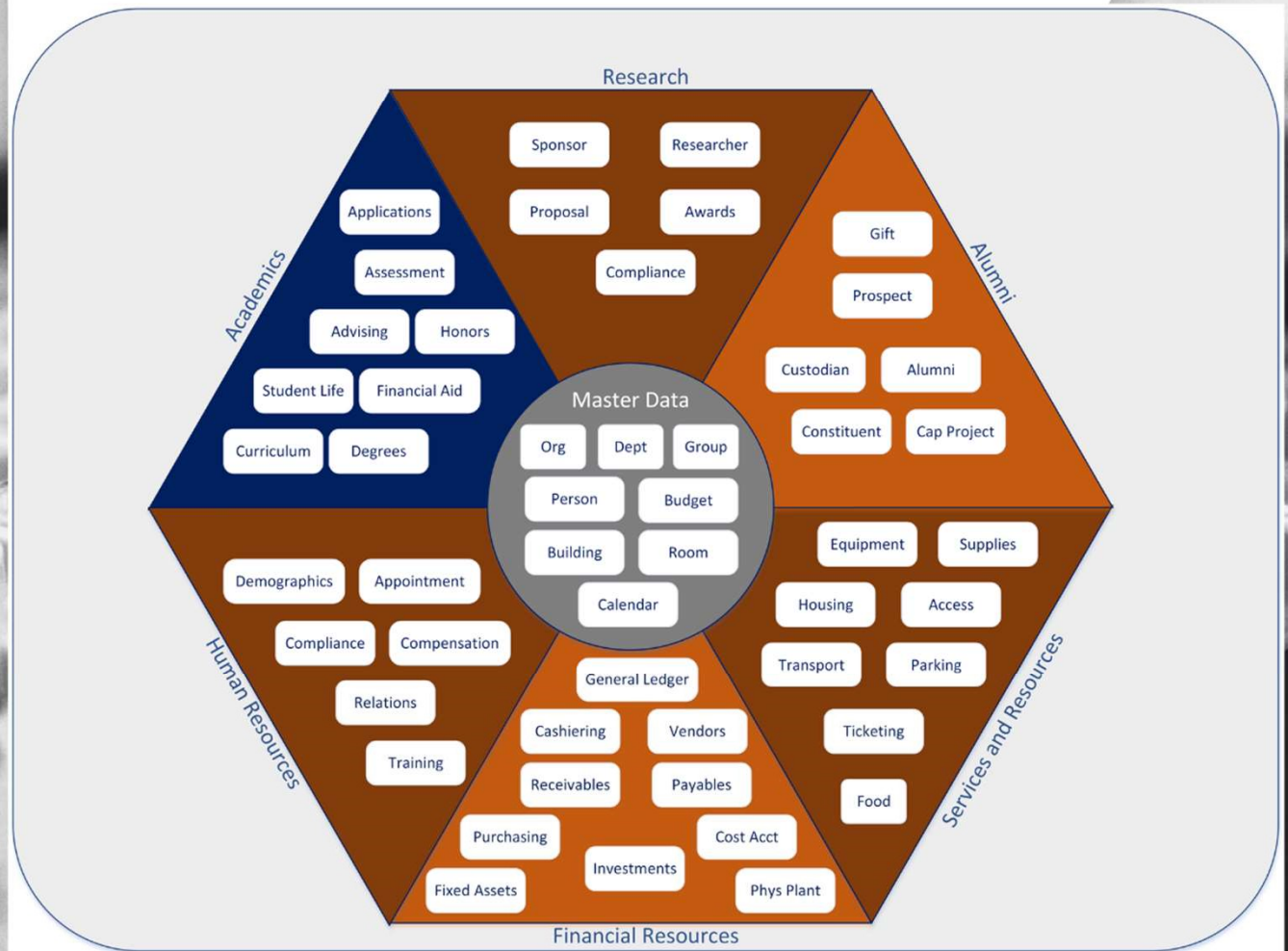
- Choose whether and how to preserve:
- System of Record
  - Data Warehouse
  - Destroy

Responsible Parties:

- Data Governance Council
- Data Stewards
- Data Custodians

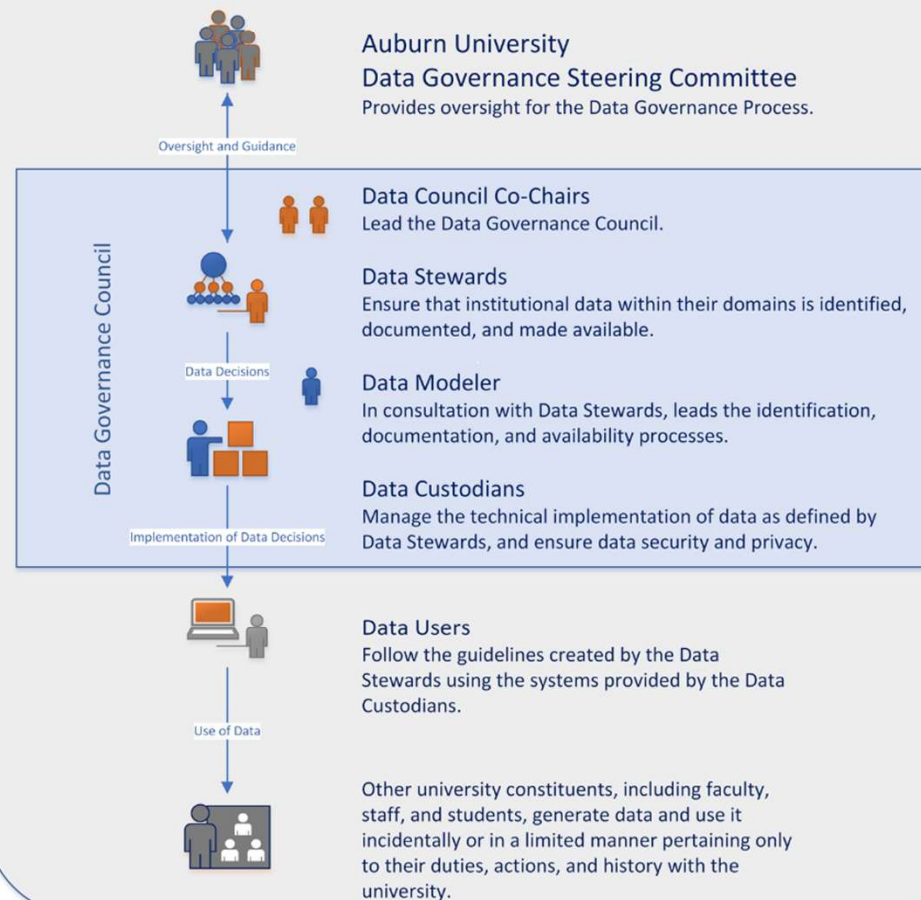


# UNIVERSITY DATA ENVIRONMENTS

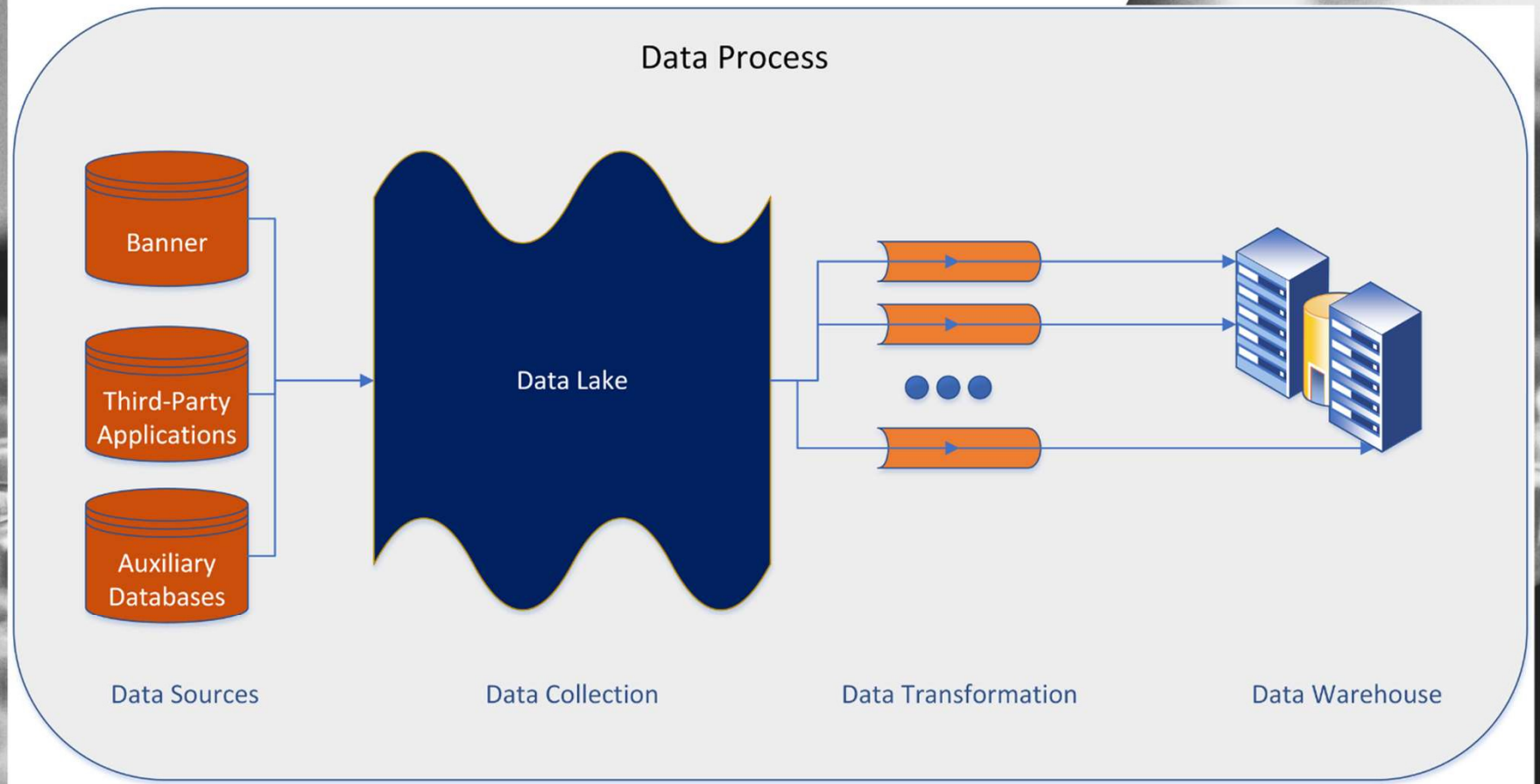


# DATA GOVERNANCE STRUCTURE

## Data Governance Roles and Process



# DATA STORAGE





# DATA PIPELINE



# CENTRAL USER ACCESS POINT

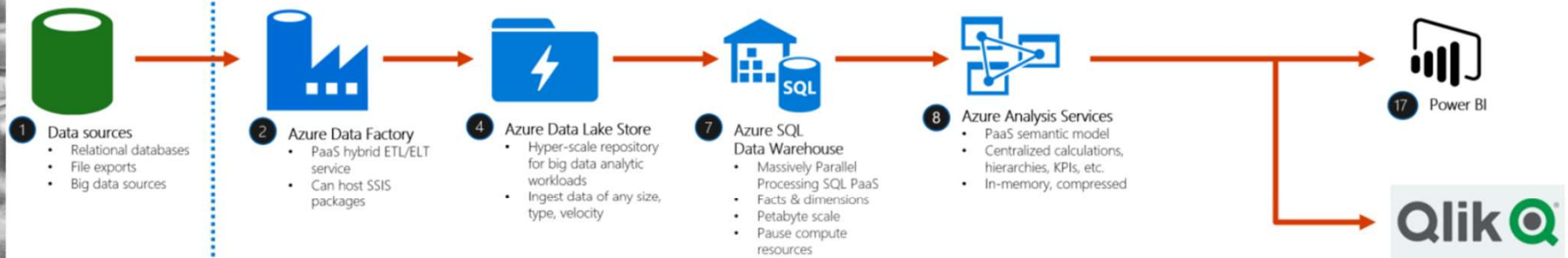


# PROOF OF CONCEPT

Auburn University  
POC  
Reference Architecture



Azure





# M E T A D A T A



- Element Name
- Definition
- Sensitivity Classification
- Access Designation
- Stewardship Office
- Source
- Data Origin
- Associated Terms
- Availability
- Retention Requirements
- General Notes

# RESEARCH GRANT PROPOSAL PIPELINE

PRE-AWARD

AWARD

POST-AWARD



# RESEARCH GRANT PROPOSAL PIPELINE

PRE-AWARD

AWARD

POST-AWARD

- Number of proposals in each stage by:
  - Faculty
  - Department
  - Research topic area
  - Research funding Source
- Track the success rates by various attributes
- Support reporting to funding agencies
  - Financial reporting
  - Programmatic reporting
  - Audit requests



# UNIVERSITY MISSION



# DATA CATALYST



A blurred laboratory background featuring a multi-well plate with numerous small wells. A pipette tip is positioned over one of the wells. The image has a warm, orange-toned overlay on the left side and a dark blue overlay on the right side.

QUESTIONS?