



AUBURN UNIVERSITY  
COLLEGE OF HUMAN SCIENCES

# THIS IS NUTRITION.

Options in  
Nutrition/Dietetics,  
Nutrition Science, and  
Nutrition/Wellness.

## Degree Handbook



Science for a Quality Life

## THIS IS AUBURN.

College of Human Sciences  
Office of Academic Affairs  
266 Spidle Hall, Auburn, AL 36849  
[www.humsci.auburn.edu](http://www.humsci.auburn.edu)  
(334) 844-4790

**THIS IS A COLLEGE WITH A  
“STUDENTS FIRST” PHILOSOPHY  
AND A GOAL OF PRODUCING  
COMPETENT, SOCIALLY  
RESPONSIBLE LEADERS  
FOR THE 21ST CENTURY.**

**-Dean June Henton**



Science for a Quality Life

# Table of Contents

A Message from Your Associate Dean for Academic Affairs	4
CHS Mission, Vision, and Belief System	5
Major and Career Opportunities	6
Undecided About Your Major?	7
Career Center Freshman Checklist	8
Tips for Success	9
Who is My Advisor and How Do I Schedule an Appointment?	10
Student Organizations and Selected Honoraries	11-12
CHS Scholarships and Awards	13-14
Computer Competency Test (COMP 1AA0)	15
Recommended Computer Configuration (minimum 2015-16)	16
Business Minor	17
International Minor in Human Sciences	18
Human Development and Family Studies Minor	19
Hunger Studies Minor	20
Philanthropy and Nonprofit Studies Minor	21
AP, IB, CLEP Information	22-25
CHS Administrative Staff	26
My Notes Page	27
Major: Nutrition	29
Nutrition/Dietetics Application Information	31
Frequently Asked Questions About Careers in Dietetics	32
Steps to Becoming a Registered Dietitian (RD)	34
Tentative Semester Course Offerings	36
NDHM Faculty	37
Curriculum	39

## A Message from Your Associate Dean for Academic Affairs

War Eagle!

On behalf of the College of Human Sciences, I would like to extend a warm welcome to you and your family as we begin Camp War Eagle 2015. The team of academic advisors and staff in the Office of Academic Affairs is here to guide you throughout your academic journey at Auburn University. During Camp War Eagle, the Office of Academic Affairs staff will introduce you to the programs and resources in the College of Human Sciences and assist you in planning your first semester of classes. Our goal is to familiarize you with the College and ensure that you are registered with a full course schedule in order for you to leave Camp War Eagle feeling comfortable and prepared for beginning classes at Auburn this fall.

Being the parent of a college freshman myself, I know this is an exciting time for you and your family. The College of Human Sciences faculty and staff are delighted that you have chosen CHS to be your home away from home, and we look forward to assisting you as you take part in the unique opportunities which lie ahead. The College of Human Sciences is a dynamic learning environment with numerous opportunities for students to get involved, develop their leadership abilities, and connect with the broader world around them. With a small faculty-student ratio and fantastic opportunities for studying abroad, service learning, and undergraduate research, CHS students can often be found experiencing learning outside of the classroom. The College of Human Sciences is privileged to offer a permanent campus in Ariccia, Italy, where many Human Sciences students choose to study abroad for a semester to earn the International Minor in Human Sciences. The College also offers numerous other study abroad opportunities which have included South Africa, Fiji, Peru, London, and Jordan, as well as study/travel opportunities to locations such as New York, Napa, and Chicago.

In the College of Human Sciences, you will experience a warm, friendly, supportive environment where you are treated as a valued student. Human Sciences is a place that will help you grow academically and prepare you for challenging and rewarding careers in the global marketplace. Thank you for choosing the College of Human Sciences, and please feel free to contact the Office of Academic Affairs with any academic advising-related questions you may have now or in the future.

Sincerely,



Dr. Susan Hubbard  
Associate Dean and Professor  
College of Human Sciences  
266 Spidle Hall  
Auburn, AL 36849  
334-844-4790



# CHS Mission, Vision, and Belief System

---

## Mission

---

The mission of the College of Human Sciences is to enhance human well-being in Alabama, the nation, and the world through the integrated study of individuals and families in their near environment. Human Sciences programs educate professionals, generate knowledge, and deliver research-based educational programs to contribute to the quality of life of families and individual consumers and to the economic growth of Alabama business and industry.

---

## Vision

---

The College of Human Sciences is a *dynamic, challenging learning environment* where students become professionally competent, globally aware, and socially engaged as they develop into 21st century leaders. This academic paradigm that reaches beyond the classroom to open students' minds and broaden world views, differentiates CHS graduates in the global marketplace. It further enables them to positively impact the health and well-being of individuals, families, and consumers in pursuit of a sustainable world. CHS students and faculty will excel locally and internationally, thus elevating the reputation of Auburn University with the College of Human Sciences setting the quality standards by which competing programs are measured.



- A genuine commitment to service excellence and lifelong learning is the foundation for organizational and professional success.

*World-class education is best defined by graduates who are professionally competent, globally aware, and socially engaged.*

- Professional integrity and ethical behavior are best promoted by an integrated set of personal and professional values.

---

## Belief System

---

The College of Human Sciences is distinguished by a commitment to the integration of the following quality of life premises:

- Quality of life is a function of the relationship between people and their environments.

- Global issues impact the well-being of individuals, families, and communities locally and worldwide.
- Human diversity generates a dynamic force for progress.
- Stewardship of the earth's human and natural resources is the responsibility of each generation.
- Philanthropy is vital to solving social problems and improving quality of life.

- Intellectual discovery and the application of knowledge are strengthened through innovative partnerships.
- Contemporary issues are complex and most effectively addressed by multidisciplinary and transdisciplinary approaches.
- Next generation technologies are critical to the preparation of students for success in the global, knowledge-based economy.
- Twenty-first century learning requires that students and faculty reach beyond the classroom to gain practical experiences, an awareness of emerging trends, and a realistic perspective of their place in a rapidly changing world.

# Major and Career Opportunities

The College of Human Sciences at Auburn University provides a vibrant, engaging environment where the best and the brightest study with outstanding faculty who demonstrate the caring concern so important to the human sciences. The College of Human Sciences is committed to providing world-class education that requires students to reach beyond the classroom to gain practical experiences, an awareness of emerging trends, and a realistic perspective of their place in the world.

*In addition, Human Sciences offers you much more:*

- Faculty/Academic Advisor Assigned to Every Student
- Highly Qualified Faculty as Teachers and Researchers
- Senior Level Professional Internships
- Outstanding Career Placements
- International Focus Integrated into all Curricula
- Study Tours, Field Trips, and Service or Experiential Learning Opportunities
- Extraordinary Opportunities to Learn From Visiting Lecturers
- International Minor in Human Sciences that students may earn on campus in Arricia, Italy



Our graduates are prepared for exciting, rewarding careers in a global marketplace and are ready to meet the challenges of our changing world.

## Majors

- **Apparel Merchandising, Design and Production Management**
  - Apparel Merchandising Option*
  - Apparel Design and Production Management Option*
- **Interior Design**
- **Human Development and Family Studies**
- **Human Development and Family Studies with Early Childhood Education**
- **Nutrition**
  - Dietetics Option*
  - Wellness Option*
  - Nutrition Science Option (Pre-Medical, Pre-Dental, Pre-Physical or Pre-Occupational Therapy)*
- **Hotel and Restaurant Management**
- **Global Studies in Human Sciences**

## Minors

- International Minor in Human Sciences
- Philanthropy and Nonprofit Studies Minor
- Human Development and Family Studies Minor
- Hunger Studies Minor

## Career Opportunities

### SCIENCE

Registered Dietitian  
Pharmaceutical Sales Representative  
Science and Health Journalist  
Pre-Health Career Preparation (Pre-Medicine, Pre-Dentistry, Pre-Physical Therapy)  
Quality Control Analyst  
Product Testing Manager  
Food Technologist  
Research Lab Associate

### BUSINESS

Apparel Buyer  
Food and Beverage Manager  
Entrepreneur  
Hotel Manager  
Apparel Engineer/Production Manager  
Retail Marketer/Store Manager  
Sales/Brand Manager  
Public Relations/Media Professional  
Global Sourcing Director

### DESIGN

Interior Designer  
Product Developer  
Apparel Designer  
Lighting Specialist  
Fashion or Interiors Journalist  
Fashion Consultant/Stylist  
Costume Curator  
Computer-Aided Design Specialist  
Color Specialist  
Visual Merchandiser

### HUMAN RELATIONS

Non-profit Organization Coordinator  
Day Care/Preschool Teacher  
Child Life Specialist  
Child and Family Policy Advocate  
Senior Citizen Center Manager  
Early Learning Educator  
Youth Ministry Program Director  
Juvenile Program Associate  
Human Resources Specialist



# Undecided About Your Major?

Are you undecided about a major? You are not alone. Many students come to Auburn uncertain about their major. In the College of Human Sciences, we will help you select an area of study that is right for you.

*If yes...*

*Then consider...*

Are you interested in the medical field?  
Do you anticipate attending graduate school?

- Nutrition Science

Do you like scientific experiments?  
Do you like figuring out why things work the way they do?  
Are you interested in wellness and physical fitness?  
Do you appreciate the connection between health and nutrition?  
Do you want to make a contribution to society?

- Nutrition/Dietetics
- Nutrition Wellness

Do you like working with people?  
Do you enjoy travel?  
Can you get things done?  
Did you serve as an officer of your class?  
Do you enjoy making decisions or analyzing tough situations?  
Do you wish you could own your own business?  
Do you like a challenge?

- Hotel and Restaurant Management
- Apparel Merchandising
- Global Studies in Human Sciences

Do your friends say you have a flair for color or design?  
Do you make your own clothes and do ingenious things with patterns?  
Are you inclined to redesign or rearrange your living environment?  
If something doesn't work for you, do you redesign it so it does?

- Interior Design
- Apparel Design and Production Management

Would you like to find solutions to some of society's more pressing problems, like poverty, access to health care, affordable housing, environmental issues, and the quality of life of children, teens, or elderly people?

- Human Development and Family Studies
- Global Studies in Human Sciences
- Interior Design

Do you enjoy working with people?  
Are you interested in influencing public policies that impact the future of children and families?  
After your bachelor's degree, do you plan to pursue additional training in counseling, education, or seminary?

- Human Development and Family Studies

# CAREER CENTER FRESHMAN CHECKLIST;

TAKING YOUR FIRST STEPS

CHOOSE YOUR MAJOR | DISCOVER YOUR CAREER | BUILD YOUR RESUME

- ☐ Set up your Tiger Recruiting Link (TRL) account  
[jobs.auburn.edu](https://jobs.auburn.edu)
- ☐ Attend Internship and Part-Time Job Fair  
*Fall and Spring Semesters*
- ☐ Meet with a Career Counselor to discuss career plans and goals  
*Call 334.844.4744 for an appointment*
- ☐ Complete the FOCUS assessments to gain personal insight into career direction  
[auburn.edu/career/assessments](https://auburn.edu/career/assessments)
- ☐ Explore "What Can I Do With a Major In...?" resource  
[auburn.edu/career](https://auburn.edu/career)
- ☐ View Candid Career video informational interviews  
[auburn.edu/career/choose](https://auburn.edu/career/choose)
- ☐ Shadow or interview a professional in your career field of interest
- ☐ Practice interview skills with InterviewStream resource  
[auburn.edu/career/mock](https://auburn.edu/career/mock)
- ☐ Join at least one social or service club & one professional or leadership organization  
[auburn.edu/experience](https://auburn.edu/experience)
- ☐ Connect via social media



Follow @AUCareer



## Tips for Success

Become familiar with the following scheduling aids:

- **Schedule of Courses – online (tigeri)**
- **Curriculum Model**
- **Schedule of Department Courses**
- **Schedule Planning Sheet**
- **University Core Requirements for your Specific Major**
- **Auburn University Bulletin – online ([www.auburn.edu/bulletin](http://www.auburn.edu/bulletin))**
- **Degree Works**

Please make sure you have an accurate local address, e-mail address, and cell phone number on tigeri. Please update this information as it changes.

You will need to check your Auburn e-mail on a daily basis.

Become familiar with Academic Support Services, the Auburn University Career Center, and other campus resources.

*Get to know your Academic Advisor through regular advising appointments.*

In order to graduate as projected based on your curriculum model, it is imperative that you complete your major course sequences. Do not drop a prerequisite course without clearing it with your advisor.

Maintain a written record of your progress by filling in your curriculum sheet as you complete courses each semester. Maintain an academic file including curriculum sheet and any other documentation.

*Accept responsibility for your academic progress. Be informed and be prepared to take responsibility for your scheduling decisions.*

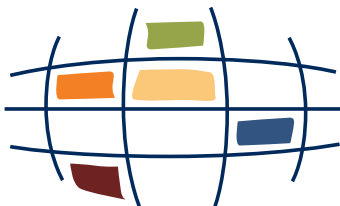


Contact the Academic Affairs office (334/844-4790) if you are out of class due to an extended illness or other problems which prevent you from attending class. If you are unable to contact your instructors, your advisor will assist you.

REMEMBER that you may not drop classes after mid-semester unless there are extenuating circumstances. Only the CHS

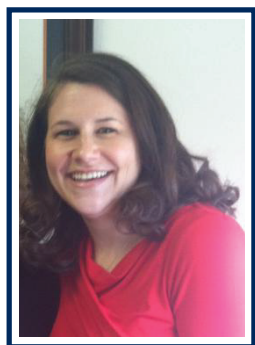
Associate Dean for Academic Affairs can determine if you meet that criteria—not your instructor, you or your parents.

*Stay in contact with your academic advisor via email or in person.*



# Who is My Advisor and How Do I Schedule an Appointment?

## Who is my advisor?



**Kim Parker -  
Advises Last Names A-J**

266 Spidle Hall  
parkeka@auburn.edu  
334-844-4790



**Katie Lackey -  
Advises Last Names K-Z**

266 Spidle Hall  
lackekm@auburn.edu  
334-844-4790

## To Schedule an Appointment:

*Go to:  
<http://www.humsci.auburn.edu/acad/>  
and click the link at the bottom right-hand side of the page to “Click here to make an appointment with an advisor”.*

1. Enter your Global User ID (First part of Auburn email - Example- abc0001)
2. Enter your Password
3. Click “Continue”
4. Click “Make Appointment”
5. Search for available times by selecting a date, start time, and end time
6. Select your advisor’s name
7. Click “Find Appointments”
8. Select the time that is best for you!
9. Select the reason that best describes why you need to meet with your advisor. (You can hold down “Control” on your keyboard to select more than one reason).
10. Enter your phone number and email address.

11. Confirm your email address by entering it again.
12. Click “Continue”
13. You should be directed to a confirmation screen and also receive a confirmation email from chsadvising@auburn.edu
14. In the confirmation email, you will find a link to cancel your appointment if needed.

## To Cancel an Appointment:

1. Enter your Global User ID (First part of Auburn email Example- abc0001)
2. Enter your Password
3. Click “Continue”
4. Click “View or Cancel Appointments”
5. Select the appointment you wish to cancel
6. Click “OK” to cancel appointment
7. Select “Cancelled by Student”
8. Click “Continue”
9. Click “Log Out”

To schedule an academic advising appointment, visit  
[www.humsci.auburn.edu/acad](http://www.humsci.auburn.edu/acad) and click  
“Make an Appointment with an Advisor” or call (334) 844-4790.  
“Walk-in Wednesdays”: 9-11am and 1-3pm, Spidle 266.

# Student Organizations and Selected Honoraries

Students in Human Sciences may enhance their academic program by participating in a variety of student organizations and honoraries. Involvement with peers in these organizations can often help students develop leadership and communication skills, explore professional interests and career opportunities, and meet other students and faculty. Students are encouraged to review the information about student organizations and contact those that interest them.

---

## Student Organizations

---

### *American Society of Interior Designers*

The American Society of Interior Designers (ASID) Student Chapter/Department of Consumer and Design Sciences is an affiliate of the American Society of Interior Designers, a professional society of interior designers. The primary purpose of this organization is to enlarge students' understanding of the interior design profession and the role they might have with this organization through Allied and Professional membership. All majors in Interior Design are eligible for membership. Activities include student participation in events sponsored by Alabama ASID and National ASID organizations, field trips, design competitions, and other types of pre-professional development activities. Contact the Department Head, Department of Consumer and Design Sciences, for further information. (334) 844-4084

### *Apparel Merchandising and Design Association*

The Apparel Merchandising and Design Association (AMDA) is an organization for students enrolled in the apparel merchandising and design majors within the Department of Consumer and Design Sciences. It has been created to support and encourage the students in their education and future careers within the fashion industry. AMDA helps to connect students with professionals in the industry for internships and jobs. AMDA sponsors an annual Fashion Event including a fashion show and design exhibition. Proceeds from the Fashion Event help to support a peer giving scholarship to support AMDP students. Contact the Department Head, Department of Consumer and Design Sciences, for further information. (334) 844-4084

### *Auburn University Student Chapter of Club Managers*

The Auburn University Student Chapter of Club Managers Association of America (CMAA) was chartered in September 1990. This student chapter is recognized by the Alabama Chapter and national headquarters of CMAA and was the 20th student chapter to be chartered in the U.S. Membership is open to all Hotel and Restaurant Management majors who have an interest in club management or who identify with the standards of club management. Guest speakers, field trips to private clubs, and attendance at the CMAA National Conference are among the activities of this group. Contact the Department Head, Department of Nutrition, Dietetics and Hospitality Management for further information. (334) 844-4261

### *Human Sciences Student Ambassadors*

The Human Sciences Student Ambassadors is a select group of men and women who serve as ambassadors for the College of Human Sciences. The ambassador's major role is to represent the College of Human Sciences and provide information about students, faculty, academic programs, and careers in Human Sciences to prospective students and their families, alumni, and visiting dignitaries. Ambassadors assist at College and University-sponsored events, conduct tours of Human Sciences facilities, correspond with interested students and their families, and meet with advisory councils and the Dean's Development Board. Contact Academic Affairs, College of Human Sciences, for further information. (334) 844-4790

### *International Interior Design Association*

The International Interior Design Association (IIDA) Student Chapter/Department of Consumer and Design Sciences is an affiliate of the International Interior Design Association of Designers, a professional society of interior designers. The primary purpose of this organization is to work toward the advancement of the value of interior design and its practitioners as well as to cultivate leadership within the profession. IIDA seeks to enlarge students' understanding of the interior design profession internationally and the role they might have with this organization through Allied and Professional membership. All majors in Interior Design are eligible for membership. Activities include student participation in events sponsored by Alabama IIDA and National IIDA organizations, field trips, design competitions, and other types of

## Student Organizations (continued)

pre-professional development activities. Contact the Department Head, Department of Consumer and Design Sciences, for further information. (334) 844-4084

### *National Society of Minorities in Hospitality*

NSMH, formally known as the National Society of Minorities in Hospitality, is one of the largest student-led organizations in the United States. Founded in 1989, there are currently over 90 Universities and Colleges with an active NSMH chapter. The goals of NSMH are to educate and assist future leaders of the hospitality industry, provide networking opportunities, and promote diversity in hospitality. Contact the Department Head, Department of Nutrition, Dietetics and Hospitality Management, for further information. (334) 844-4261

### *Student Dietetic Association*

The Student Dietetic Association (SDA) is a student organization affiliated with the Academy of Nutrition and Dietetics (AND). The goals are to involve Auburn students in the expansion and communication of nutrition knowledge through projects such as “National Nutrition Month” programs, lectures on current topics in nutrition, and practical yet fun social events. The Student Dietetic Association allows nutrition and food science students as well as students in other curricula to have a greater understanding of nutrition and the professional applications of nutrition in health care. Contact the Department Head, Department of Nutrition, Dietetics and Hospitality Management, for further information. (334) 844-4261

---

## SELECTED HONOR SOCIETIES

---

### *Eta Sigma Delta*

Eta Sigma Delta is the national scholastic honorary society for Hotel and Restaurant Management majors. Students must be a junior or senior and have an overall grade point average of 3.00 or higher. Membership is by invitation only.

### *Gamma Sigma Delta*

Gamma Sigma Delta is a scholastic honor society for outstanding students in the College of Human Sciences and the College of Agriculture. Graduating seniors or graduate students, who have a 3.00 or above and who are in the top fifteen percent of their class, are eligible for this organization.

### *Kappa Omicron Nu*

Kappa Omicron Nu is the national honor society for outstanding students in human sciences. Students in the upper fifteen percent of the junior class and the upper twenty percent of the senior class with at least a 3.00 grade point average are eligible for invitation to membership. In addition, students must have completed two upper level courses in the major.

### *Phi Kappa Phi*

The Honor Society of Phi Kappa Phi is a national scholastic honor society which recognizes and encourages academic excellence in all disciplines. Students in the top five percent of the graduating class from each college/school are invited into membership each semester.

# CHS Scholarships and Awards

The College of Human Sciences is pleased to have a number of scholarships and awards which are available to students. Additional information about scholarship opportunities may be obtained from the Office of the Dean, College of Human Sciences, 266 Spidle Hall, Auburn University, AL 36849-5601, (334) 844-4790.

**Deadline for scholarship applications for current Auburn University students is March 1, 2016. Deadline for incoming students is February 15, 2016. Applications are available through AUSOM.**

## SCHOLARSHIPS

Elizabeth Lauren "Libbie" Ainsworth Endowed Scholarship  
Anamerle Arant Memorial Scholarship  
Dorothy Dean Arnold Scholarship  
Dr. Mary Eileen Barry Scholarship  
Carolyn Horn Beck Endowment for Scholarships  
Alma S. Bentley Scholarship  
Dorothy Ann Johnston Blackburn Endowment for Scholarships  
Daisy Bond Alabama Chapter-ASID Endowed Scholarship  
Brannen Family WPB Endowed Scholarship  
Lee & Bob Cannon Endowment for Scholarship in Nutrition  
Chicken Salad Chick WPB Endowed Scholarship  
DeKalb Office Annual Scholarship  
Joseph S. Bruno Endowed Scholarship for the Joseph S. Bruno Auburn Abroad in Italy Program  
The William Carter Company Endowment for Scholarships  
Pao Sen Chi Memorial Endowment Fund for Scholarship in Nutrition  
Eva Richards Christenberry '48 Endowed Scholarship in Nutrition & Dietetics  
Al & Dudley Cook Endowment for Scholarships in the Colleges of Business and Human Sciences  
College of Human Sciences Faculty Scholarship  
Ethel Woodruff Draper Endowment for Scholarships  
Elza Stewart Drummond Endowed Scholarship  
Element Health, Inc. Scholarship  
Jewel Golden Eubanks '33 Endowed Scholarship  
Ruth Legg Galbraith Endowed Scholarship  
Dana King Gatchell Scholarship  
David B. Haggard Endowment for Scholarships

Glenda S. Harris/Alabama Power Foundation Endowed Scholarship  
Richard W. Henton Study Abroad in Interior Design Scholarship  
Delta Upsilon Memorial Scholarship  
Dothan Area CVB – Miller/Hollis Endowed Scholarship in HRMT  
Sandy & Sally Heely Annual Scholarship in HRMT  
Richard W. Henton Endowed Scholarship in INDS  
Interior Elements Annual Scholarship  
The Hotel at Auburn University & Dixon Conference Center Annual Scholarship in the Joseph S. Bruno Auburn Abroad in Italy Program  
Dr. Susan & Representative Mike Hubbard Endowed Scholarship  
International Beverage Company, Inc./Bunnahabhain Single Malt Scotch Annual Scholarship in HRMT  
Dora Hanson James WPB Endowed Scholarship  
Johnston Industries Endowment for Scholarship  
Larson-Peterson WPB Memorial Scholarship for Consumer and Design Sciences  
Joyce & Roger Lethander Endowment for Scholarship  
Don Logan - Southern Progress Endowed Scholarship  
Jane Campbell Lorendo & Gene L. Lorendo Scholarship  
Arlene Rushing Lowe Fund for Excellence  
Belinda Reynolds Michaud Endowment for Scholarships  
Norma & Varnell Moore Endowed Scholarship for International Study  
Callie Stone Nash WPB Endowed Scholarship  
Sallye Roe Nunn Endowed Scholarship  
Parthenon Prints/Bay Point Endowed Scholarship  
Delana Carol Pickens Memorial Endowed Scholarship  
Jeanne M. Priester Endowed Fellowship for Doctoral Study  
Adelia Russell Charitable Foundation Endowed Scholarship  
Floris Copeland Sheppard Endowment for Scholarship  
Pauline Sorrel Soberg Endowed Scholarship  
Marion Walker Spidle Scholarship  
Margaret Valentine Smith Annual Scholarship  
Katherine L. Stanley Endowed Scholarship  
Molly Stone Endowed Scholarship  
Tiger Rags Endowed Scholarship/Graduate Fellowship  
Don Woollen Endowed Fund for Excellence  
Women's Philanthropy Board Annual Scholarship  
Women's Philanthropy Board Endowed Scholarship

*(continue to next page)*



# CHS Scholarships and Awards (continued)

---

## AWARDS

---

AMDA Peer Giving Award  
Dorothy Dean Arnold Award  
Elizabeth Anne Cook Memorial Award  
Cobb DeShazo Award  
Interior Design Advisory Board Award  
INDS Peer Giving Award  
Mary A. Layfield Award  
Betty Winn Little Award  
President's Award  
Gorel Hamilton Sodergren Memorial Award  
Student Government Association Outstanding Student Award

**NOTE: Some scholarships and awards may require an additional departmental application.**

**NOTE: To receive consideration for need-based scholarships, students must complete the Free Application for Federal Student Aid (FAFSA)\*, available online beginning January 1. The FAFSA should be received by Auburn University by March 1.**

\*The FAFSA is the only form a student is required to complete to be considered for student assistance from any of the Title IV, HEA programs except for information needed to ensure the student's eligibility for such assistance (e.g., information needed to complete verification or to demonstrate compliance with the student eligibility provisions of the HEA and the regulations). Additional information, if requested, will be listed on the student's Tiger I Financial Aid Requirements page after the student's FAFSA results are received. For additional information, visit [auburn.edu/finaid](http://auburn.edu/finaid).



# Computer Competency Test (COMP 1AA0)

The Computer Competency Test is treated as a regular academic course (COMP 1AA0) and you will register using Tigeri.

The test, which is taken on-line, consists of fifty multiple-choice questions covering the COMP1000 Personal Computer Applications course material (Windows 2000, MS Office XP, FrontPage2002, Internet Explorer). You will need to schedule the course in the semester prior to the term in which you need to complete COMP 1000.

## WHO

Interior Design (INDS) students who have not had COMP 1000 or the old CSE, you must either pass the exam or take the course. Under semester requirements, taking the course is in addition to other requirements.

## WHEN

Fridays, between 10:00 am and 2:00 pm (no tests between 12:00 pm and 1:00 pm).

## WHERE

Department of Computer Science and Software  
Engineering  
Shop Building 1, Room 101

## SAMPLE TEST (PRACTICE)

<http://pca.eng.auburn.edu/index.aspx/CMS/comptest/POST/35/>

OR

Go to the COMP 1AA0 Official Home Page, click on Computer Competency Test Sample

You can take the practice test as many times as you want. However, students have only one attempt at successfully passing the actual test. Students not passing the test must take COMP 1000.



## Recommended Computer Configuration (minimum 2015-16)

*All Human Sciences majors are required to have a laptop computer.*

Processor	Intel core i5 or i7
Memory	8 GB Recommended
Hard Drive	500 GB (minimum)
Optical Drive	DVD/RW
Operating System	Windows 7 or Windows 8
Office Suite	Microsoft Office 365 is available to all Auburn University students free of cost.
Options	<p>Consider purchasing a multi-year (3 year) warranty.</p> <p>Consider choosing an anti-theft option such as Lojack or Computrace by Absolute. Most laptop manufacturers offer an anti-theft option with multi-year subscriptions.</p> <p>Consider purchasing an external hard drive or use cloud storage for back-up (Office 365 provides students with unlimited cloud storage).</p>

**Tip:** Auburn students can purchase some software through the Auburn University Bookstore at a substantial educational discount. Check with the Auburn University Bookstore before purchasing a software bundle with your new computer.

All AMDP majors must purchase Adobe Photoshop and Illustrator for their laptops.

### *Pre-Interior Design majors please note:*

It is required that Pre-Interior Design students purchase the MacBook Pro laptop with the minimum standards required by the Interior Design program. These specifications are updated for the incoming Pre-Interior Design class each year.

# Business Minor

## *Business Minor Requirements*

The following classes are required for the Business Minor:

- ECON 2020\*
- ACCT 2810 (student may substitute ACCT 2110)
- FINC 3810 (student may substitute FINC 3610)
- MNGT 3810 (student may substitute MNGT 3100)
- MKTG 3310

*\*If a student has completed ECON 2020 as a part of the University Core Curriculum, he/she will be required to complete ECON 2030 for the Business Minor.*

To earn a Business Minor, a student needs to earn a cumulative GPA in the Business Minor courses of 2.0 or higher.

Course Prerequisites: Please note that ACCT 2810/2110 and junior standing are the prerequisites for FINC 3810/3610. This prerequisite is strictly enforced by the Finance Department. In addition, ECON 2020 and junior standing are the prerequisites for MKTG 3310. These prerequisites are strictly enforced the Marketing Department.

**TO DECLARE A BUSINESS MINOR, PLEASE VISIT 130 LOWDER.**

# International Minor in Human Sciences

## International Minor in Human Sciences

On/Off Campus Program

Name \_\_\_\_\_ Student Identification Number 90 \_\_\_\_\_

E-mail Address \_\_\_\_\_@auburn.edu

Current Major \_\_\_\_\_ Anticipated Graduation Date \_\_\_\_\_

### **Required Courses (8-17 Hours)**

Grade	Semester Completed	Class (Hours)
		HUSC 5940 (3-12) Study and Travel in Human Sciences
		CADS/HDFS/NTRI(1) Study Abroad Opportunities in Human Sciences
		Foreign Language (4)

### **Elective Course Requirements (1-10 Hours)**

Grade	Semester	Class (Hours)
		CADS 2000/2003/2007 (3) Global Consumer Culture
		CADS 3700/3703 (3) Gender, Wealth and Philanthropy
		CADS 5600 (3) Global Sourcing in Textiles and Control
		HDFS 2000 (3) Marriage and Family in a Global Context
		HDFS 4680 (3) Family in a Cross-Cultural Perspective
		HDFS 5300 (3) Family and Social Policy
		HRMT 5570 (3) Global Hospitality Management
		NTRI 2000/2003/2007 (3) Nutrition and Health
		NTRI 4620 (3) Public Health Nutrition
		NTRI 4580 (2) Food and Culture

<b>Overall Minor GPA</b>	
--------------------------	--

**Total 18 credit hours**

No more than 6 hours may be lower division (2000 and below) classes.

Courses taken as a requirement for the major or University core cannot be counted toward the minor.

No S/U courses can be counted toward the minor.

Students must earn an overall grade average of "C" (2.0) on all courses taken in the minor.

Some of these courses may have prerequisites that must be met.

Once minor courses are completed, please submit form to 266 Spidle Hall.

# Human Development and Family Studies Minor

## HUMAN DEVELOPMENT AND FAMILY STUDIES MINOR

Name \_\_\_\_\_ Student Identification Number 90 \_\_\_\_\_

E-mail Address \_\_\_\_\_@tigermail.auburn.edu

Current Major \_\_\_\_\_ Anticipated Graduation Date \_\_\_\_\_

### Required Courses

Grade Semester Completed

		HDFS 2000	Marriage And Family In a Global Context (3)
		HDFS 2010	Lifespan Human Development in Family Context (3)

### Elective Courses

(Select a minimum of 12 hours from the list below; 9 hours must be at the 3000 level or higher.)

Grade Semester Completed

		HDFS 2030	Professional Development and Ethics (3)
		HDFS 3010*	Child Development in the Family (3) Pr. HDFS 2010 or departmental approval
		HDFS 3030*	Adolescent and Adult Development in the Family (3) Pr. HDFS 2010
		HDFS 3040	Human Sexuality Over the Family Life Cycle (3) Pr. HDFS 2000 or SOCY 1000 or PSYC 2010
		HDFS 3060*	Patterns of Family Interaction (3) Pr. HDFS 2000
		HDFS 3080*	Development of Interpersonal Skills (3) Pr. HDFS 2000
		HDFS 3090	Techniques of Interviewing in Professional Settings (2)
		HDFS 3460	Effective Guidance and Interaction with Young Children (3) Pr. HDFS 3010
		HDFS 3470	Learning Experiences for Young Children (3) Pr. HDFS 3460
		HDFS 3930	Service Learning in Human Development and Family Studies (1-6) LEC. Pr. Junior Standing. Application of HDFS-relevant knowledge to real-life situations thru active participation in a directed community service experience
		HDFS 5200	Program Development and Evaluation (3) Pr. HDFS 2000, 2010 and 3010 or 3030 or 3060
		HDFS 5300	Family and Social Policy (3) Pr. HDFS 2020 and HDFS 3010 or 3030 or 3060
		HDFS 4500	Hospitalized Children and Their Families (3). Pr. HDFS 3010 and junior standing in HDFS or departmental approval
		HDFS 4670	Parent Education (3) Pr. HDFS 2010
		HDFS 4680*	Family in Cross-Cultural Perspective (3) Pr. HDFS 2000
		HDFS 4950	Advanced Seminar (3) Pr. Junior standing; departmental approval. May be repeated 3 times. A. Advanced Research (3.0 GPA in HDFS Courses); B. Human Development; C. Family Studies; D. Marriage and Family Therapy
		HDFS 4980	Advanced Undergraduate Research in HDFS (1-5) Pr. Departmental approval and junior or senior standing

### OVERALL MINOR GPA:

\* Students must have a 2.25 cumulative GPA to enroll in HDFS 3010,3030,3060,3080 and 4680. A "C" grade or better must be earned in each course taken toward the minor and each must be a HDFS course.

**Note:** If a student has taken this course to fulfill requirements of the School/College core or the major, it cannot count toward the minor. In this case, the student must select an additional three hour course from the electives above.

**Note:** No S/U courses can be counted towards the minor.

Once minor courses are completed, please submit form to 266 Spidle Hall.

# Hunger Studies Minor

Name \_\_\_\_\_ Student Identification Number 90 \_\_\_\_\_  
 E-mail Address \_\_\_\_\_@auburn.edu Current Major \_\_\_\_\_ Anticipated Graduation Date: \_\_\_\_\_

## REQUIRED COURSES

Grade Semester Completed

		HUSC 2000/2003/2007	Hunger: Causes, Consequences, and Responses (3)
		HUSC 4000	Hunger Studies Capstone (3) Pr. HUSC 2000/2003/2007 & Junior Standing

## ELECTIVE COURSES

Select a minimum of 12 hours from the lists below (at least one class from each list); 9 hours must be at the 3000 level or higher

### KNOWLEDGE (MUST SELECT AT LEAST ONE COURSE)

Grade Semester Completed

		AGEC 4300	Agriculture Policy and Trade (3)
		AGRN 1000	Crop Science (4)
		ANSC 1000	Introduction to Animal Sciences (4)
		ANSC 2010	Animals and Society (3)
		CADS 2700/2703	Introduction to Nonprofit Organizations (3)
		ENGL 4040	Public Writing (3)
		FISH 5210	Principles of Aquaculture (3)
		FORV 5440	International Forestry (3)
		HORT 2050	Food for Thought (3)
		NTRI 2000/2003/2007	Nutrition and Health (3)
		NTRI 3560	Experimental Study of Foods (4)
		NTRI 4620	Public Health Nutrition (3)
		NTRI 3750	Nutrition Education (2)
		POLI 5370	Nonprofit Management (3)
		RSOC 3190	Food, Agriculture, & Society (3)

### LEADERSHIP AND ADVOCACY (MUST SELECT AT LEAST ONE COURSE)

Grade Semester Completed

		AGRI 3800	Agricultural Leadership Development (2)
		COMM 3450	Intercultural Communications (3)
		HDFS 5300	Family and Social Policy (3)
		PHIL 3100	Intermediate Ethics (3)
		POLI 2100	State and Local Government (3)
		RSOC 5640	Sociology and Community Development (3)
		RSOC 3620	Community Organization (3)
		RSOC 4410	Extension Programs and Methods (3)
		RSOC 5610	Rural Sociology (3)

### GLOBAL CITIZENSHIP (MUST SELECT AT LEAST ONE COURSE)

Grade Semester Completed

		ANTH 3000	Culture, Marriage, and the Family (3)
		ANTH 3700	Political Ecology (3)
		CADS 2000/2003/2007	Global Consumer Culture (3)
		ECON 4300	International Economics (3)
		GEOG 2010	Cultural Geography (3)
		GEOG 5350	Economic Geography (3)
		HDFS 4680	Family in Cross-Cultural Perspective (3)
		NTRI 3940	Community Service in Nutrition and Food Science (3)
		NTRI 4580	Food and Culture (2)
		POLI 3090	International Relations (3)
		POLI 3100	Introduction to World Affairs (3)
		POLI 4700	Politics of International Economic Relations (3)
		PSYC 3550	Psychology and Culture (3)

Overall Minor GPA	
-------------------	--

NOTE: If a student has taken any course to fulfill requirements of the School/College core or the major core, it cannot count toward the minor.

NOTE: **Some of the courses in this minor may have prerequisites that must be met.**

NOTE: Students must earn an overall 2.0 in the Minor Classes to receive the Hunger Studies Minor.

NOTE: Select international study abroad experiences and honors seminar courses with a hunger focus **MAY** be substituted for an elective requirement, pending **PRIOR** approval. The approval process begins with the Director of Hunger and Sustainability Initiatives.

NOTE: No S/U courses can be counted towards the minor. **Once minor courses are completed, please submit form to 266 Spidle Hall.**



# Philanthropy and Nonprofit Studies Minor

## **PHILANTHROPY AND NONPROFIT STUDIES MINOR**

Name \_\_\_\_\_ Student Identification Number 90 \_\_\_\_\_

E-mail Address \_\_\_\_\_@tigermail.auburn.edu

Current Major \_\_\_\_\_ Anticipated Graduation Date \_\_\_\_\_

### **Required Courses**

Grade Semester Completed

		CADS 2700/2703	Introduction to Nonprofit Organizations (3)
		CADS 3700/3703/3707	Gender, Wealth, and Philanthropy (3)
		CADS 4910	Practicum in Philanthropy and Nonprofit Organizations (3)

### **DISCIPLINARY SUPPORT**

(Select a minimum of 6 hours from the list below. At least 3 hours must be at the 3000 level or above.)

Grade Semester Completed

		CADS 2000/2003/2007	Global Consumer Culture (3)
		CADS 3940	Study and Travel in Consumer and Design Sciences: Philanthropy and Nonprofit Org. Tour (3)
		HDFS 3930	Service Learning in HDFS (3)
		HDFS 4500	Hospitalized Children and Their Families (3)
		HDFS 4670	Parent Education (3)
		HDFS 4680	Family in Cross-Cultural Perspective (3)
		HDFS 5300	Family and Social Policy (3)
		HUSC 2000/2003/2007	Hunger: Causes, Consequences and Responses (3)
		NTRI 4620	Public Health Nutrition (3)
		NTRI 3940	Community Service in Nutrition (3)
		HRMT 5460	Catering and Event Management (1)
		HRMT 5461	Catering and Event Management Lab (2)
		ACCT 2810	Fundamentals in Accounting (3)
<b>Overall Minor GPA:</b>			

\*If a student has taken this course to fulfill requirements of the School/College core or the major, it cannot count toward the minor. In this case, the student must select an additional three hour course from the electives above.

\*\*Some of these courses may have prerequisites that must be met.

**NOTE: Students must earn an overall 2.0 in the Minor Classes to receive the Philanthropy and Nonprofit Studies Minor.**

**NOTE: No S/U courses can be counted toward the minor.**

**Once minor courses are completed, please submit form to 266 Spidle Hall.**

## AP, IB, CLEP Information

Dependent upon the test scores received you may be eligible to receive course credit. The scores should be provided from the testing agency and home report copies are acceptable. Please call (334) 844-2528 to verify what you are eligible to receive.

**Note: Auburn University does not accept CLEP credit.**

ACT (English) with a score of 30-34 will receive 3 hours credit for ENGL1100 (English Comp I).

ACT (English) with a score of 35-36 will receive 6 hours credit for ENGL1100 & ENGL1120 (English Comp I & II).

SAT (Verbal) with a score of 680-710 will receive 3 hours credit for ENGL1100 (English Comp I).

SAT (Verbal) with a score of 720 and above will receive 6 hours credit for ENGL1100 & ENGL1120 (English Comp I & II).

### Advanced Placement Credit Table

AP TEST	Score on AP Test			
	5	4	3	1-2
American Government	3 hrs credit for POLI 1090	3 hrs credit for POLI 1090	No Credit	No Credit
Art History	9 hrs credit for ARTS 1710, 1720 & 1730	6 hrs credit for ARTS 1710 & 1720	3 hrs credit for ARTS 1710	No Credit
Art Studio	6 hrs credit for ARTS 1110 & 1120	3 hrs credit for ARTS 1110	No Credit	No credit
Art General	6 hrs credit for ARTS 1110 & 1120	3 hrs credit for ARTS 1110	No Credit	No Credit
Biology	8 hrs credit for BIOL 1020 & 1030	8 hrs credit for BIOL 1020 & 1030	4 hrs credit for BIOL 1020 or 1000	No Credit
Chemistry	8 hrs credit for CHEM 1030, 1031, 1040 & 1041	4 hrs credit for CHEM 1030, & 1031	No Credit	No Credit
Comparative Government	3 hrs credit for POLI 3120	3 hrs credit for POLI 3120	No Credit	No Credit
Computer Science (A)	3 hrs credit for COMP 1210	3 hrs credit for COMP 1210	No Credit	No Credit
Computer Science (AB)	3 hrs credit for COMP 1210 and 4 hrs credit for 2210	3 hrs credit for COMP 1210 and 4 hrs credit for 2210	No Credit	No Credit
Economics (Micro)	3 hrs credit for ECON 2020	3 hrs credit for ECON 2020	No Credit	No Credit

## AP, IB, CLEP Information (continued)

AP TEST	Score on AP Test			
Economics (Macro)	3 hrs credit for ECON 2030	3 hrs credit for ECON 2030	No Credit	No Credit
English (Language and Literature)	6 hrs credit for ENGL 1100 and ENGL 1120	3 hrs credit for ENGL 1100	No Credit	No Credit
Environmental Science	4 hrs SCMH COR2	4 hrs SCMH COR2	No Credit	No Credit
Foreign Language	8 lower division hrs equiv. to 1010 & 1020	8 lower division hrs equiv. to 1010 & 1020	4 lower division hrs equiv. to 1010	No Credit
Human Geography	3 hrs credit for GEOG 1010 (Global Geography) or 2010 (Cultural Geography)	3 hrs credit for GEOG 1010 (Global Geography) or 2010 (Cultural Geography)	No Credit	No Credit
American History	6 hrs credit for HIST 2010 & 2020	3 hrs credit for HIST 2010 and exemption from HIST 2020	No Credit	No Credit
European History	6 hrs credit for HIST 1010 & 1020	3 hrs credit for HIST 1010 and exemption from HIST 1020	No Credit	No Credit
World History	6 hrs credit for HIST 1010 & 1020	3 hrs credit for HIST 1010 and exemption from HIST 1020	No Credit	No Credit
Math: Calculus AB	7 hrs credit for MATH 1130 & 1610	7 hrs credit for MATH 1130 & 1610	7 hrs credit for MATH 1130 & 1610	No Credit
Math: Calculus BC	11 hrs credit for MATH 1130, MATH 1610 & 1620	11 hrs credit for MATH 1130, MATH 1610 & 1620	11 hrs credit for MATH 1130, MATH 1610 & 1620	No Credit
Physics B	8 hrs credit for PHYS 1500 & 1510	4 hrs credit for PHYS 1500	No Credit	No Credit
Physics C Mechanics	4 hrs credit for PHYS 1600	4 hrs credit for PHYS 1600	No Credit	No Credit

## AP, IB, CLEP Information (continued)

AP TEST	Score on AP Test			
Physics C Electricity & Magnetism	May take PHYS 2200. After successfully completing PHYS 2200, the student will receive credit for PHYS 1610	May take PHYS 2200. After successfully completing PHYS 2200, the student will receive credit for PHYS 1610	No Credit	No Credit
Physics 1	4 hrs credit for PHYS 1500	4 hrs credit for PHYS 1500	No Credit	No Credit
Physics 2	4 hrs credit for PHYS 1510	4 hrs credit for PHYS 1510	No Credit	No Credit
Psychology	3 hrs credit for PSYC 2010	3 hrs credit for PSYC 2010	No Credit	No Credit
Statistics	3 hrs credit for STAT 2510	3 hrs credit for STAT 2510	3 hrs credit for STAT 2510	No Credit

## International Baccalaureate Credit Table

IB Test	Score on IB Test			
	7	6	5	1-4
Biology	8 hrs for BIOL 1020 & 1030	Students who score 5 or 6 on this test or on an appropriate Subsidiary Level Biology test will be eligible to take the biology proficiency examinations for each of BIOL1020 and 1030. The results of these examinations will determine the amount of credit to be assigned and which courses will be waived.		No Credit
Chemistry (Higher Level)	8 hrs for CHEM 1030 & 1040 with labs	8 hrs for CHEM 1030 & 1040 with labs	8 hrs for CHEM 1030 & 1040 with labs	No Credit
Economics (Standard Level)	Credit for ECON 2020 & 2030	Credit for ECON 2020 & 2030	No Credit	No Credit
Economics (Higher Level)	Credit for ECON 2020 & 2030	Credit for ECON 2020 & 2030	Credit for ECON 2020 & 2030	No Credit

## AP, IB, CLEP Information (continued)

IB Test	Score on IB Test			
English (A1 Higher Level)	6 sem. hrs for ENGL 1100 and ENGL 1120	3 sem. hrs for ENGL 1100	3 sem. hrs for ENGL 1100	No Credit
History (American Higher Level)	6 hrs credit for HIST 2010 & 2020	6 hrs credit for HIST 2010 & 2020	No Credit	No Credit
History (European Higher Level)	6 hrs credit for HIST 1010 & 1020	6 hrs credit for HIST 1010 & 1020	No Credit	No Credit
Mathematics (Higher Level)	8 hrs credit for MATH 1610 and 1620.	8 hrs credit for MATH 1610 and 1620.	8 hrs credit for MATH 1610 and 1620.	Score of 4: 4 hrs credit for MATH 1610. Score of 1-3: No Credit
Physics (Higher Level)	8 hrs credit for PHYS 1500 & 1510 or be allowed to take PHYS 2200. After successfully completing PHYS 2200, student will receive credit for PHYS 1600 and PHYS 1610.	8 hrs credit for PHYS 1500 & 1510 or be allowed to take PHYS 2200. After successfully completing PHYS 2200, student will receive credit for PHYS 1600 and PHYS 1610.	4 hrs credit for PHYS 1500 or 1600	No Credit

For questions please call 334-844-2528.

# CHS Administrative Staff

STAFF	OFFICE	PHONE
<b>Dr. June Henton</b> , <i>Dean</i>	210 Spidle Hall	844-3790
<b>Dr. Jennifer Kerpelman</b> , <i>Associate Dean/Research</i>	210 Spidle Hall	844-3790
<b>Dr. Susan Hubbard*</b> , <i>Associate Dean/Academic Affairs</i> <a href="mailto:hubbasg@auburn.edu">hubbasg@auburn.edu</a>	266 Spidle Hall	844-4790
<b>Ms. Katie Lackey*</b> <a href="mailto:lackekm@auburn.edu">lackekm@auburn.edu</a> <i>Academic Advisor III</i>	266 Spidle Hall	844-4790
<b>Ms. Kim Parker*</b> <a href="mailto:parkeka@auburn.edu">parkeka@auburn.edu</a> <i>Academic Advisor III</i>	266 Spidle Hall	844-4790
<b>Ms. Kelly Martin</b> <a href="mailto:kelly.martin@auburn.edu">kelly.martin@auburn.edu</a> <i>Student Services Coordinator</i>	266 Spidle Hall	844-4790
<b>Ms. Linda Bruner</b> <a href="mailto:lrb0018@auburn.edu">lrb0018@auburn.edu</a> <i>Academic Programs Assistant</i>	266 Spidle Hall	844-4790
<b>Ms. Sue Ann Fox</b> <a href="mailto:saf0001@auburn.edu">saf0001@auburn.edu</a> <i>Administrative Asst./Italy Program</i>	232 Spidle Hall	844-3748
<b>Ms. Jan Casson*</b> <a href="mailto:cassojc@auburn.edu">cassojc@auburn.edu</a> <i>Administrative Associate</i>	266 Spidle Hall	844-4790
<b>Mr. Walter Tolbert</b> <a href="mailto:tolbewa@auburn.edu">tolbewa@auburn.edu</a> <i>Network Manager</i>	148 Spidle Hall	844-3788
<b>Dr. Carol Warfield</b> <a href="mailto:warfcl@auburn.edu">warfcl@auburn.edu</a> <i>Department Head, Consumer and Design Sciences</i>	308 Spidle Hall	844-1329
<b>Dr. Joe Pittman</b> <a href="mailto:pittmjf@auburn.edu">pittmjf@auburn.edu</a> <i>Department Head, Human Development and Family Studies</i>	203 Spidle Hall	844-3242
<b>Dr. Martin O'Neill</b> <a href="mailto:oneilm1@auburn.edu">oneilm1@auburn.edu</a> <i>Department Head, Nutrition, Dietetics and Hospitality Management</i>	328D Spidle Hall	844-3264
<b>Dr. Kate Thornton</b> <a href="mailto:kate.thornton@auburn.edu">kate.thornton@auburn.edu</a> <i>Director, Global Education</i>	232 Spidle Hall	844-3748

\* For student related issues and questions, please contact Academic Affairs Office at 334-844-4790.

DEPARTMENTAL SUPPORT STAFF	OFFICE	PHONE
<b>Ms. Tracie Burton</b> , <i>CADS Office Administrator</i> <a href="mailto:burtotl@auburn.edu">burtotl@auburn.edu</a>	308 Spidle Hall	844-4051
<b>Ms. Dorothy McKinnon</b> , <i>HDFS Office Administrator</i> <a href="mailto:harrido@auburn.edu">harrido@auburn.edu</a>	278C Spidle Hall	844-3220
<b>Mr. Adam Malone</b> , <i>HDFS Administrative Assistant</i> <a href="mailto:arm0047@auburn.edu">arm0047@auburn.edu</a>	203 Spidle Hall	844-3245
<b>Ms. Tanya Stringer</b> , <i>NDHM Administrative Assistant</i> <a href="mailto:tds0001@auburn.edu">tds0001@auburn.edu</a>	328 Spidle Hall	844-4261



This image shows a full page of blank, lined paper. It features approximately 20 evenly spaced horizontal grey lines across its entire width, typical of notebook or primary school writing paper. The lines are thin and light grey, set against a plain white background. There are no margins, text, or other markings on the page.

**THIS IS HUMAN SCIENCES.**

# **MAJOR- SPECIFIC INFORMATION**

# Major: Nutrition

## *Department of Nutrition, Dietetics, and Hospitality Management*

### About the Majors

**The Department of Nutrition, Dietetics and Hospitality Management (NDHM)** offers undergraduate majors in Nutrition Science, Nutrition/Dietetics, Nutrition/Wellness, and Hotel and Restaurant Management. All majors take a core of courses that include physical and biological sciences, as well as liberal arts and humanities, providing graduates with a strong educational foundation and excellent career preparation. Graduates of the Nutrition programs and the Hotel and Restaurant Management program are in demand in a variety of health-related, hospitality, and food industry careers.

#### *Nutrition*

The field of nutrition is concerned with human physiology and biochemistry and their relationship to human health, diet, and well-being. Nutrition is a science concerned with human physiology, biochemistry, and their relationship to human health, disease prevention, and well-being. Professionals in nutrition do research and provide education and/or counseling to a variety of audiences in many different settings, including hospitals and medical centers, extended care facilities, schools, and public health agencies. A strong interest in science and in working with people are important characteristics for a successful career in the field of nutrition. The NTRI curriculum has three options which permit specialization according to students' specific interests.



### Nutrition Science

The Nutrition Science option prepares students for health professional schools, such as medical, dental, optometry, and physical therapy, as well as for graduate study in nutrition and other health-related disciplines. The Nutrition Science option produces graduates with a sound scientific understanding of complex nutrition issues related to health and disease that are highly competitive for acceptance into post-graduate academic programs.

### Nutrition/Dietetics

The Nutrition/Dietetics option is designed to prepare students interested in completing the requirements to become credentialed as a Registered Dietitian (RD) and Registered Dietitian Nutritionist (RDN). This option prepares students for careers in clinical nutrition, community nutrition, public health, nutrition education and counseling, foodservice management, and food and nutrition in industry. Graduates who successfully complete the Didactic Program in Dietetics are qualified to apply for a post-baccalaureate supervised-practice program, which is a requirement for eligibility to take the National Registration Examination for Dietitians and earn the RD/RDN credential. Auburn University's Didactic Program in Dietetics is accredited by the Accreditation Council for Education in Nutrition and Dietetics of the Academy of Nutrition and Dietetics, 120 South Riverside Plaza, Suite 2000, Chicago, IL 60606-6995, (312) 899-0040 ext. 5400. [Http://www.eatright.org/ACEND](http://www.eatright.org/ACEND).

### Nutrition/Wellness

The Nutrition/Wellness option prepares students for careers in health-related settings. Graduates find positions in non-profit health organizations, hospital-based and corporate based programs, and federal, state and local health agencies.

## Are you interested in academic preparation leading to Medical, Dental, and Physical Therapy Professional Schools?

Auburn University offers at least three avenues for receiving this preparation. These include programs through the College of Science and Mathematics, the College of Engineering, and through the College of Human Sciences, Department of Nutrition, Dietetics and Hospitality Management. These programs of study include the required coursework for most American medical, dental, physical or occupational therapy applicants and are equally rigorous and challenging. The Nutrition Science option is an excellent choice leading to health professional schools.

### Why?

The Nutrition Science curriculum option provides students with a basic knowledge of intake, absorption, and metabolism for food constituents which can be applied to the diagnosis and treatment of disease. It also provides a background in health promotion and disease prevention, thus, underpinning the emphasis on prevention that characterizes current discussions of healthcare reform. Six of the ten leading causes of death in the United States are diet-related. A health care professional with primary training in nutrition will have knowledge about the correlation between eating habits and health and the food supply. Therefore, the Nutrition Science option will provide potential health care professionals with greater nutrition knowledge and a relevant background to enhance health care quality.



## So what? Aren't medical schools looking for students with biology or chemistry degrees?

Most professional schools prefer that a student obtain a college degree before entrance. However, admissions' committees do not give preference to any particular major. Students are encouraged to choose a major that interests them. This is particularly critical in that it enables students to earn a degree that offers alternate career preparation. The reality is that the number of students applying to health professional programs far exceeds available placements. And, students do change their life plans - even students in their senior year of college. Because of these uncertainties, students are encouraged to develop a fall-back plan in case they change their minds or fail to gain admission to the professional school.

## What are the career alternatives in Nutrition Science?

Nutrition is a science concerned with human physiology, biochemistry, and their relationship to human health and well-being. The Nutrition Science option is a part of an academic program that leads to a Bachelor of Science degree. With this preparation, professionals in nutrition conduct research and provide education and/or counseling to a variety of audiences in many different settings, including medical centers and hospitals, extended care facilities, schools, and public health agencies. Graduates may also work with pharmaceutical companies or may elect to pursue graduate study in nutrition.



## What do we suggest?

**We encourage students to explore all alternatives before selecting their academic major. However, we believe that the Nutrition Science option is the best choice!**

# Nutrition/Dietetics Application Information

The Nutrition/Dietetics option is designed to prepare students interested in completing the requirements to become credentialed as a Registered Dietitian (RD) and Registered Dietitian Nutritionist (RDN). This option prepares students for careers in clinical nutrition, community nutrition, sports nutrition, public health, nutrition education and counseling, foodservice management, and food and nutrition in industry.

Graduates who successfully complete the Didactic Program in Dietetics are qualified to apply for a post-baccalaureate supervised practice program, which is a requirement for eligibility to take the National Registration Examination for Dietitians and earn the RD/RDN credential.

The Auburn University's Didactic Program in Dietetics is accredited by the Accreditation Council for Education in Nutrition and Dietetics of the Academy of Nutrition and Dietetics, 120 South Riverside Plaza, Suite 2000, Chicago, IL 60606-6995, (312) 899-0040 ext. 5400. (<http://www.eatright.org/ACEND>. <https://bulletin.auburn.edu>)

---

## Academic Standards and Policies:

---

*Freshmen and on and off campus transfer students who desire to major in Nutrition/Dietetics will be admitted to Pre-dietetics (NTDX).*

The pre-dietetics curriculum provides a strong foundation in nutrition and supporting sciences to prepare students to enter the professional component of the program.

To be eligible for consideration for admission to the didactic program in dietetics, applicants must successfully complete at least 45 semester hours of the pre-dietetics curriculum courses, including:

**NTRI 2000/2003/2007 Nutrition and Health**

**and 4 of the following 6 science courses:**

**CHEM 1030/1031 Fundamentals of Chemistry I**

**CHEM 1040/1041 Fundamentals of Chemistry II**

**CHEM 2030 Survey of Organic Chemistry**

**BIOL 1020/1021 Principles of Biology**

**BIOL 2500 Anatomy and Physiology I**

**BIOL 2510 Anatomy and Physiology II**

Students must successfully complete the lower-division pre-dietetics prerequisite courses as outlined below with a minimum GPA of 2.8 on a 4.0 scale. No grade lower than a "C" will be accepted in any prerequisite course (BIOL 1020/1021, BIOL 2500, BIOL 2510, CADS 2000, CHEM 1030/1031, CHEM 1040/1041, CHEM 2030, HDFS 2000, NTRI 2000 (2003 or 2007), NTRI 2070, PSYC 2010.)

Criteria for admission include pre-dietetics cumulative GPA, science GPA, and student's personal statements and career goals.

*Due to the limited number of seats, achievement of minimum standards does not ensure admission into the Didactic Program in Dietetics.*

---

## Program Application:

---

Pre-dietetic students must formally apply to the DPD typically during the second semester of the sophomore year. Application materials will be posted to the nutrition/dietetics website. Students will be notified of admission decisions in writing. Students accepted to the DPD must pre-register for the appropriate courses for the upcoming fall semester

Source: <https://bulletin.auburn.edu>

*Please refer to the Auburn University Bulletin for the most up-to-date information.*

([https://bulletin.auburn.edu/undergraduate/collegeofhumansciences/departments/nutritiondieteticsandhospitalitymanagement/nutritiondieteticsoption\\_major](https://bulletin.auburn.edu/undergraduate/collegeofhumansciences/departments/nutritiondieteticsandhospitalitymanagement/nutritiondieteticsoption_major))

# Steps to Becoming a Registered Dietitian (RD)

---

## Academic Preparation

---

To become a Registered Dietitian, students are required to take prescribed coursework in an accredited Didactic Program in Dietetics or Coordinated Program in Dietetics; to complete a minimum of 1200 hours of supervised practice experience; and pass the national Examination for Registered Dietitians.

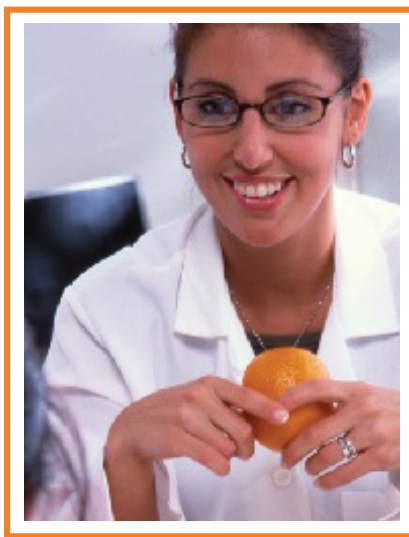
---

## Major in Nutrition – Dietetics Option

---

Auburn University offers an accredited Didactic Program in Dietetics<sup>1</sup>. A student graduating with a BS in Nutrition (Dietetics Option) is eligible to apply for post-baccalaureate supervised practice (e.g., a dietetic internship) to fulfill the supervised practice experience requirements to sit for the national Examination for Registered Dietitians. Upon successful completion of the examination, graduates will earn the Registered Dietitian (RD) and Registered Dietitian Nutritionist (RDN) credential.

Auburn University's B.S. in Nutrition (Dietetics Option) consists of a 2-year pre-professional component and the 2-year professional Didactic Program in Dietetics (DPD). The pre-professional program in Nutrition/Dietetics is required for students seeking admission to the DPD. The first two years of coursework are designed to provide the student with a strong foundation in the basic sciences and an introduction to nutrition. Freshman and on- and off-campus transfer students who desire to major in Nutrition/Dietetics will be admitted to Pre-dietetics (NTDX). Students apply to the 2-year Professional Didactic Program in Dietetics typically the second semester of the sophomore year. Complete information about admission requirements and the application process can be found at <http://www.humsci.auburn.edu/nufs/nufs-bs-di.php>.



---

## Supervised Practice Programs (Dietetic Internships and Coordinated Masters Programs)

---

Supervised practice programs, primary as dietetic internships, are available throughout the United States. Average length is approximately 10 months but varies from 9 to 36 months; many are combined with an M.S. degree or offer some graduate credit. Coordinated Masters Programs integrate the didactic training with the supervised field

experience. A few programs offer distance options, enabling location-bound interns to complete their rotations using facilities and preceptors in various locations. Students typically apply for supervised practice experiences during the senior year. Auburn University's DPD Director actively assists AU students and graduates in the application process. The University of Alabama in Birmingham, Vanderbilt University Medical Center, Georgia State University, the University of Houston and some VA hospitals are examples of available supervised practice programs. Distance programs are available through the University of Northern Colorado, Oakwood University (Huntsville, AL), Utah State University, Iowa State University and others.

Supervised practice programs are competitive and students are well advised to take their studies seriously and strive for a 3.5 GPA particularly in the junior and senior years.

---

## Individualized Supervised Practice Pathways (ISPP)

---

Auburn University offers an M.S. in Nutrition – The Non-Thesis Option with ISPP Experience offers a minimum of 1200 hours of supervised field experience in conjunction



## Steps to Becoming a Registered Dietitian (continued)

with the M.S. degree to enable baccalaureate degree graduates of Didactic Programs in Dietetics the opportunity to fulfill the experiential requirements to sit for the Registration Examination for Dietitians. The Auburn ISPP Experience is offered to students who **applied but did not get matched to a dietetic internship**. Academic coursework is completed over the first year, followed by the field experience the second year. Complete information about admission requirements and the application process can be found at <http://www.humsci.auburn.edu/nufs/ispp.php>.

Current listings of nationally accredited dietetic programs can be found at: <http://www.eatright.org>.

---

### Registration Examination for Dietitians

---

*Following successful completion of both the undergraduate degree and the experience component, students are eligible to take the Registration Examination for Dietitians (RD exam).*

The exam is administered by computer and available year round. Eligibility to take the examination is established through the Commission on Dietetic Registration (<https://www.cdrnet.org/>).

---

### Transfer Students

---

Students who plan to transfer to Auburn University's dietetics program may take courses through other universities or community colleges. However, all transfer courses are evaluated for equivalency with the corresponding AU course and are subject to disapproval. Therefore, it is strongly recommended that students contact Auburn for guidance in selecting courses that will transfer into the dietetics curriculum. Individuals who can provide this guidance are:

- Ms. Katie Lackey, 266 Spidle Hall, Auburn, AL 36849-5605 334/844-4790 [lackekm@auburn.edu](mailto:lackekm@auburn.edu)
- Ms. Kim Parker, 266 Spidle Hall, Auburn, AL 36849-5605 334/844-4790 [parkeka@auburn.edu](mailto:parkeka@auburn.edu)
- Dr. Patricia Marincic, 101-E Poultry Science Building, Auburn, AL 36849 334/844-3271 [pzm0015@auburn.edu](mailto:pzm0015@auburn.edu)

Typically, courses in chemistry (general and organic), history, English, biology, anatomy & physiology (2 courses), math (pre-cal with trig), basic statistics, psychology, ethics and basic nutrition may be transferred from community colleges *provided that the courses meet Auburn and NDHM requirements and students earn a grade of C or better*. For students planning to transfer from a four-year college, nutritional biochemistry and microbiology could be transferred *provided these meet Auburn and NDHM requirements and students make a grade of C or better*.

**Reminder:** Students who plan to transfer to Auburn's dietetics program should make an appointment to discuss plans with one of the above-listed contacts as soon as possible.

<sup>1</sup>Auburn University's Didactic Program in Dietetics is accredited by the Accreditation Council for Education in Nutrition and Dietetics (ACEND) of the Academy of Nutrition and Dietetics, 120 South Riverside Plaza, Suite 2000, Chicago, IL 60606-6995, (312)-899-0040, ext. 5400. You can also visit [www.eatright.org/acend](http://www.eatright.org/acend).

# Frequently Asked Questions About Careers in Dietetics

The Department of Nutrition, Dietetics and Hospitality Management at Auburn University offers a Didactic Program in Dietetics (DPD) that leads to the Bachelor of Science in Nutrition. This program of study provides the didactic or academic requirements to become a dietitian. However, **after completing the bachelor's degree**, students must complete a Supervised Practice Experience (Dietetic Internship). After successfully completing the internship, students may sit for the Registration Examination for Dietitians. Graduates passing the exam are credentialed as a Registered Dietitian (RD)/Registered Dietitian Nutritionist (RDN).

## Tell Me More About the Dietetic Internship (Supervised Practice Experience).

The Dietetic Internship (DI) is completed after graduation from the undergraduate program in Nutrition/Dietetics. In order to complete all requirements to become a Registered Dietitian students must apply to accredited supervised practice programs (e.g., a dietetic internship or coordinated master degree program) sponsored by hospitals, health departments, foodservice management companies, school districts, and universities. The dietetic internship or other supervised practice requires a minimum of 1200 hours of field experience. These programs average 10 months, but range in length from about 9-24 months, depending on the type of program (e.g., part-time or full-time). Several internships offer graduate credit or are offered in conjunction with a Master's degree. Individuals completing supervised practice satisfactorily, as verified by the program director, are eligible to take the Registration Examination for Dietitians.

## Is it difficult to be accepted for a Dietetic Internship? Are the internships competitive?

Appointments to most dietetic internships are awarded on a nationally competitive basis through a computer matching process. Through websites or upon request, internship programs will provide more detailed information on program requirements, fees, tuition, and financial aid. At Auburn, the DPD Director and nutrition faculty actively assist students in preparing internship applications. The national average for internship placement is approximately

50%; Auburn's average the past two years has been considerably better at approximately 80%.

## How many accredited internship sites are there?

***There are approximately 250 accredited dietetic internships.*** Recent Auburn graduates have been accepted at a variety of locations, including the University of Alabama at Birmingham, Oakwood University, Emory, Vanderbilt University Medical Center, Medical University of South Carolina, University of Houston, Oregon Health Sciences Center, the University of Minnesota, and Veterans Affairs hospitals in Memphis and Houston. Several "distance" internships are available that enable a prospective intern to plan his/her own program away from the main site, but under its direction.



## How can students plan toward being competitive for an internship?

***Grades and cumulative GPAs are very important from the first semester of the freshman year.***

Strive to earn A's and B's. Do not overload yourself with classes, work, or extracurricular activities until you settle in and establish good study habits. Then do get involved in student activities and leadership opportunities. Get to know your nutrition professors.

These professors can be helpful in writing internship recommendation letters for your internship application during your senior year. Use breaks and vacation periods to gain volunteer or paid experience in a healthcare (preferably hospital) setting.

## Are dietetic interns paid while completing their internships?

Most dietetic internships charge a fee or tuition. Some may offer financial aid opportunities. A few dietetic internships offer salary or stipends and some are part-time, enabling interns to hold a job. All dietetic internships must disclose estimated costs in their application materials. Students applying to internships should carefully review this information.

## What happens if you don't match for an internship?

Students who do not match for an internship can reapply in subsequent years or seek an Individualized Supervised

## Frequently Asked Questions (continued)

Practice Pathway (ISPP). Other options include graduate or professional school, taking the the national registration exam to become a Dietetic Technician Registered (DTR), and employment in positions that do not require the RD credential.

**Auburn University offers an M.S. in Nutrition – Non-Thesis Option with ISPP Experience.** This M.S. with ISPP Experience offers a minimum of 1200 hours of supervised field practice in conjunction with the M.S. degree to enable baccalaureate degree graduates of Didactic Programs in Dietetics (DPDs) the opportunity to fulfill the experiential requirements to sit for the Registration Examination for Dietitians. The ISPP Experience is offered to students who **applied but did not get matched to a dietetic internship.** Academic coursework is completed over the first year, followed by the field experience the second year.

### What are the potential career paths for Registered Dietitians?

Registered Dietitians work in a wide variety of employment settings, including health care, business and industry, public health, education, research, and private practice. Many work environments, particularly those in medical and health care settings, require that an individual be credentialed as a Registered Dietitian. In many states, including Alabama, Registered Dietitians must also be licensed.

- **Private practice**, working with individual or corporate clients, or in their own business. Registered Dietitians may provide services to restaurants, supermarkets, food vendors and distributors, athletes, nursing homes, daycare centers and individuals.
- **Community and public health settings** teaching, collaborating on health policy, monitoring and advising the public, and helping to improve quality of life through promotion of healthy eating.
- **Universities and medical centers**, teaching physicians, nurses, dietetics students, and others about the relationship of food and nutrition to health.
- **Research areas** in food and pharmaceutical companies, universities, and hospitals, directing or conducting research to answer critical nutrition questions that lead to recommendations for the maintenance of health and prevention and treatment of disease.

### What can I do to determine if I really want to become a dietitian?

Early in your college program, participate in volunteer or “shadow” experiences with a Registered Dietitian in your home town. This could be in a clinical, community, or food service setting. Gaining insight into what dietitians do in their daily routine can be helpful in clarifying your goals. Camp Seale Harris, a summer camp for Alabama’s children with diabetes, is held each June and always welcomes volunteers. Join the Student Dietetic Association. Pay careful attention to all information presented in NTRI 2070: Careers in Nutrition, Dietetics, and Wellness.

---

## Registered Dietitians work in:

---

- **Hospitals, and other health care facilities**, educating patients about nutrition and administering medical nutrition therapy as part of the health care team. They may also manage the foodservice operations in these settings overseeing everything from food purchasing and preparation to managing staff and budgets.
- **School districts, colleges and universities, retirement centers**, managing food service programs for students, residents and others.
- **Sports nutrition and corporate wellness programs**, educating clients about the connection between food, fitness, physical performance and health.
- **Food and nutrition-related businesses and industries**, working in communications, consumer affairs, public relations, sales, marketing, and product development.



## Key Points to Remember!

Grades are important from your very first course. The supervised practice/dietetic internship is completed after graduation with the Bachelor’s degree, in a location away from Auburn. Acceptance into a dietetic internship is at the national level and is a highly competitive process.

# Tentative Semester Course Offerings

## DEPARTMENT OF NUTRITION, DIETETICS, AND HOSPITALITY MANAGEMENT FALL 2015/SPRING 2016/SUMMER 2016

Undergraduate Courses - NTRI		Fall	Spring	Summer*
2000/2003	Nutrition and Health. Credit will not be given for both NTRI 2000, NTRI 2003 and NTRI 2007.	X	X	X
2007	Honors Nutrition and Health. Pr. Honors College.		X	
2010	Basic Sports Nutrition, Pr. (BIOL 1020 or BIOL 1027) or (NTRI 2000/2003/2007).	X		X
2070	Careers in Nutrition, Dietetics, and Wellness, Pr., NTRI 2000/2003/2007 or departmental approval		X	
3560	Experimental Study of Foods, Pr., NTRI 2000/2003/2007, CHEM 1030 and BIOL 1020	X		
3750	Nutrition Education, Pr. PSYC 2010, NTRI 2000/2003/2007 or departmental approval.		X	
3940	Community Service. Departmental approval.	X	X	X
4090	Professional Issues in Dietetics and Nutrition, Pr., NTRI 2070, NTDI or departmental approval. Junior standing.	X		
4560	Food Systems Operations, Pr., NTRI 2050 or NTRI 3560 or Departmental approval.	X		
4561	Food Systems Operations Laboratory, Pr., NTRI 2050 or NTRI 3560 or Departmental approval. Coreq. NTRI 4560. TB Test.	X		
4620	Public Health Nutrition, Pr., STAT 2510; Coreq. NTRI 5820	X		
4820	Macronutrients, Pr. (NTRI 2000 or NTRI 2007 or NUFS 2000 or NUFS 2007) and P/C BCHE 3180 and BIOL 2510 or Departmental approval.		X	
4830	Vitamins and Minerals, Pr. (NTRI 2000 or NTRI 2007) and P/C BCHE 3180.		X	
4930	Directed Studies, Pr., departmental approval	X	X	X
4997	Honors Thesis, Pr., membership in the Honors College, departmental approval	X	X	X
5020/6020	Medical Nutrition I, Pr. NTRI 4820 and NTRI 4830. Coreq. NTRI 4090. NTDI or departmental approval.	X		
5030/6030	Medical Nutrition II, Pr., NTRI 5020/6020. NTDI or departmental approval.		X	
5100	Nutrition in Disease Prevention. Pr. NTRI 4820 and 4830.		X	
5560	Nutrition and Food Service Management. Pr. (P/C NTRI 4560 or P/C NTRI 4561) or Departmental approval.		X	
5620/6620	Sports Nutrition. Pr. BIOL 2510 and BCHE 3180. Departmental approval.			X
5760	Nutrition Counseling. Pr. NTRI 3750. Coreq. NTRI 5030/ NTRI 6030. NTDI or departmental approval.		X	
5820/6820	Nutrition in the Life Cycle, Pr., NTRI 4830. Departmental approval.	X		
5830	Nutritional Genomics, Pr. NTRI 4820 and NTRI 4830.		X	
5910	Clinical Practicum in Dietetics. Coreq. NTRI 5020 and NTRI 5030. NTDI or department approval.		X	

\* Offered in summer only if funding is available and adequate enrollment is obtained.

\*\* Offered every other year.

**Note:** Tentative Schedule-Course offerings are subject to resource availability and minimum class enrollments. Please check semester schedule of courses available through Tigeri for course offering information each semester.

# NDHM Faculty

## NUTRITION, DIETETICS AND HOSPITALITY MANAGEMENT

328 Spidle Hall (334) 844-4261

101 Poultry Science Bldg. (334) 844-3261

FACULTY	OFFICE	PHONE
Dr. Martin O'Neill, Dept. Head <a href="mailto:oneilm1@auburn.edu">oneilm1@auburn.edu</a>	328D Spidle Hall	844-3264
Dr. Baker Ayoun <a href="mailto:bma0002@auburn.edu">bma0002@auburn.edu</a>	360 Spidle Hall	844-8196
Dr. Onikia Brown <a href="mailto:onb0001@auburn.edu">onb0001@auburn.edu</a>	356 Spidle Hall	844-3161
Dr. Alecia Douglas <a href="mailto:acd0011@auburn.edu">acd0011@auburn.edu</a>	358 Spidle Hall	844-1434
Dr. Kevin Huggins <a href="mailto:huggikw@auburn.edu">huggikw@auburn.edu</a>	102D Poultry Science Bldg.	844-3296
Dr. Michael Greene <a href="mailto:mwg0006@auburn.edu">mwg0006@auburn.edu</a>	101C Poultry Science Bldg.	844-8435
Dr. Ramesh Jeganathan <a href="mailto:jeganrb@auburn.edu">jeganrb@auburn.edu</a>	101F Poultry Science Bldg.	844-3840
Dr. Yee Ming Lee <a href="mailto:yzl0085@auburn.edu">yzl0085@auburn.edu</a>	362 Spidle Hall	844-6453
Ms. Gwen Lloyd <a href="mailto:gcl0002@auburn.edu">gcl0002@auburn.edu</a>	102F Poultry Science Bldg.	844-3429
Dr. Patricia Marincic <a href="mailto:pzm0015@auburn.edu">pzm0015@auburn.edu</a>	101E Poultry Science Bldg.	844-3271
Dr. David Martin <a href="mailto:martida@auburn.edu">martida@auburn.edu</a>	328B Spidle Hall	844-3291
Dr. Imran Rahman <a href="mailto:izr0004@auburn.edu">izr0004@auburn.edu</a>	328C Spidle Hall	844-4206
Dr. Doug White <a href="mailto:whitebd@auburn.edu">whitebd@auburn.edu</a>	101D Poultry Science Bldg.	844-3266
Dr. Claire Zizza <a href="mailto:zizzaca@auburn.edu">zizzaca@auburn.edu</a>	101J Poultry Science Bldg.	844-7417

**THIS IS HUMAN SCIENCES.**

# **CURRICULUM**



Student

SID 90

E-mail @tigermail.auburn.edu

Date of Entry

Advisor

### CURRICULUM IN NUTRITION OPTION: NUTRITION SCIENCE

Department of Nutrition, Dietetics and Hospitality Management, College of Human Sciences, Auburn University, AL

UNIVERSITY CORE CURRICULUM	42	SEM.	REQUIRED SUPPORTING COURSES	50	SEM.
ENGL 1100 English Composition I	3		<b>BIOL 1020 Principles of Biology</b>	4	
ENGL 1120 English Composition II	3		<b>BIOL 3200 General Microbiology</b>	4	
MATH 1610 Calculus 1	4		BIOL 2500 Human Anatomy and Physiology I	4	
CHEM 1030 & CHEM 1031 Fund. of Chemistry I	4		BIOL 2510 Human Anatomy and Physiology II	4	
CHEM 1040 & CHEM 1041 Fund. of Chemistry II	4		BIOL 3000 Genetics	4	
<b>Social Sciences - 12 Hours</b>			BIOL 4100 Cell Biology	3	
History 1: _____	3		BIOL 4101 Cell Biology Lab	2	
History 2: _____	3		BIOL 4410 Vertebrate Development	5	
SOCY 1000 Sociology: Global Perspective	3		CHEM 2070 Organic Chemistry I	3	
PSYC 2010 Introduction to Psychology	3		CHEM 2071 Organic Chemistry I Lab	1	
<b>Core Humanities - 12 Hours</b>			CHEM 2080 Organic Chemistry II <sup>1</sup>	3	
Literature: _____	3		CHEM 2081 Organic Chemistry II Lab <sup>1</sup>	1	
COMM 1000 Public Speaking	3		PHYS 1500 General Physics I	4	
PHIL 1030 Ethics and the Health Sciences	3		PHYS 1510 General Physics II	4	
Core Fine Arts: _____	3		SCHM 1890 Pre-Health Professions Orientation	1	
<b>REQUIRED HUMAN SCIENCES CORE</b>	9	SEM.	STAT 2510 Stat. for Biological and Health Sciences	3	
<b>CADS 2000 Global Consumer Culture</b>	3		UNIV 4AA0-HS1 Undergraduate Graduation <sup>2</sup>	0	
<b>HDFS 2000 Marriage &amp; Family in a Global Context</b>	3				
<b>NTRI 2000 Nutrition and Health</b>	3				
<b>REQUIRED NUTRITION MAJOR CORE</b>	22	SEM.			
<b>BIOL 1030 Organismal Biology</b>	4				
<b>NTRI 2070 Careers in Nutrition, Dietetics &amp; Wellness</b>	1				
<b>BCHE 3180 Nutritional Biochemistry</b>	3				
<b>NTRI 4820 Macronutrients</b>	3				
<b>NTRI 4830 Vitamins and Minerals</b>	3				
<b>NTRI 5100 Nutrition in Disease Prevention</b>	2				
<b>NTRI 5820 Nutrition in the Life Cycle</b>	3				
<b>NTRI 5830 Nutritional Genomics</b>	3				

**Total: 123 Semester Hours**

**University Core Notes:** Students in the Honors College may take equivalent honors courses. May use online version of classes.

Literature options: ENGL 2200, 2210, 2230, 2240, 2250 or 2260

History options: HIST 1010 and 1020 or 1210 and 1220

Fine Arts options: ARCH 2600, ARTS 1510, 1710, 1720, 1730, ENVD 2040, MUSI 2730, 2740, 2750, MDIA 2350, THEA 2010

#### College and Department Notes:

Required major courses and College core courses are in bold. Grades in these courses are used to calculate the GPA in the major and to meet graduation standards.

All Human Sciences majors are required to have a laptop. Please refer to the CHS website for specifications.

<sup>1</sup>For Pre-Physical Therapy, substitute an additional psychology course for CHEM 2080 and CHEM 2081.

<sup>2</sup>Seniors must register for UNIV 4AA0-HS1 the term they plan to graduate (non-credit class for clearing graduation).

**NUTRITION SCIENCE OPTION(NSPM)  
PROPOSED SEMESTER CURRICULUM MODEL**

FRESHMAN YEAR

**Fall Semester**

<b>BIOL 1020/1021</b>	<b>Principles of Biology</b>	<b>4</b>
CHEM 1030	Fundamentals of Chemistry I	3
CHEM 1031	Fundamentals of Chemistry I Lab	1
ENGL 1100	English Composition I	3
MATH 1610	Calculus I	4
SCMH 1890	Pre-Health Professions Orientation	1
		<u>16</u>

**Spring Semester**

<b>BIOL 1030/1031</b>	<b>Organismal Biology</b>	<b>4</b>
CHEM 1040	Fundamentals of Chemistry II	3
CHEM 1041	Fundamentals of Chemistry II Lab	1
ENGL 1120	English Composition II	3
<b>NTRI 2000</b>	<b>Nutrition and Health</b>	<b>3</b>
HISTORY	Core History 1	3
		<u>17</u>

SOPHOMORE YEAR

**Fall Semester**

BIOL 2500	Human Anatomy and Physiology I	4
CHEM 2070	Organic Chemistry I	3
CHEM 2071	Organic Chemistry I Lab	1
PSYC 2010	Introduction to Psychology	3
STAT 2510	Stats. for Biological and Health Sciences	3
HISTORY	Core History 2	3
		<u>17</u>

**Spring Semester**

BIOL 2510	Human Anatomy and Physiology II	4
BIOL 3000	Genetics	4
CHEM 2080	Organic Chemistry II <sup>1</sup>	3
CHEM 2081	Organic Chemistry II Lab <sup>1</sup>	1
SOCY 1000	Sociology: Global Perspective	3
<b>NTRI 2070</b>	<b>Careers in Nutr., Dietetics &amp; Wellness</b>	<b>1</b>
		<u>16</u>

JUNIOR YEAR

**Fall Semester**

<b>BCHE 3180</b>	<b>Nutritional Biochemistry</b>	<b>3</b>
<b>BIOL 3200</b>	<b>General Microbiology</b>	<b>4</b>
BIOL 4100	Cell Biology	3
BIOL 4101	Cell Biology Lab	2
PHYS 1500	General Physics I	4
		<u>16</u>

**Spring Semester**

<b>HDFS 2000</b>	<b>Marriage &amp; Family in a Global Context</b>	<b>3</b>
<b>NTRI 4820</b>	<b>Macronutrients</b>	<b>3</b>
<b>NTRI 4830</b>	<b>Vitamins and Minerals</b>	<b>3</b>
PHYS 1510	General Physics II	4
		<u>13</u>

SENIOR YEAR

**Fall Semester**

BIOL 4410	Vertebrate Development	5
<b>NTRI 5820</b>	<b>Nutrition in the Life Cycle</b>	<b>3</b>
FINE ARTS	Core Fine Arts	3
COMM 1000	Public Speaking	3
		<u>14</u>

**Spring Semester**

<b>NTRI 5100</b>	<b>Nutrition in Disease Prevention</b>	<b>2</b>
<b>NTRI 5830</b>	<b>Nutritional Genomics</b>	<b>3</b>
PHIL 1030	Ethics and the Health Sciences	3
LITERATURE	Core Literature	3
<b>CADS 2000</b>	<b>Global Consumer Culture</b>	<b>3</b>
UNIV4AA0	HS1 Undergraduate Graduation <sup>2</sup>	0
		<u>14</u>

**Total: 123 Semester Hours**

**University Core Notes:** Students in the Honors College may take equivalent honors courses. May use online version of classes.

Literature options: ENGL 2200, 2210, 2230, 2240, 2250 or 2260

History options: HIST 1010 and 1020 or 1210 and 1220

Fine Arts options: ARCH 2600, ARTS 1510, 1710, 1720, 1730, ENVD 2040, MUSI 2730, 2740, 2750, MDIA 2350, THEA 2010

**College and Department Notes:**

Required major courses and College core courses are in bold. Grades in these courses are used to calculate the GPA in the major and to meet graduation standards.

All Human Sciences majors are required to have a laptop. Please refer to the CHS website for specifications.

<sup>1</sup> For Pre-Physical Therapy, substitute an additional psychology course for CHEM 2080 and CHEM 2081.

<sup>2</sup> Seniors must register for UNIV 4AA0-HS1 the term they plan to graduate (non-credit class for clearing graduation).



Student

SID 90

E-mail

@tigermail.auburn.edu

Date of Entry

Advisor

**CURRICULUM IN NUTRITION OPTION:Pre-DIETETICS††**

Department of Nutrition, Dietetics and Hospitality Management, College of Human Sciences, Auburn University, AL

UNIVERSITY CORE CURRICULUM	42	SEM.	Required NTRI Major Core	44
<i>ENGL 1100 English Composition I</i>	3		<b><i>NTRI 2070 Careers in Nutrition, Dietetics/Wellness</i></b>	1
<i>ENGL 1120 English Composition II</i>	3		<b><i>NTRI 3560 Experimental Study of Foods</i></b>	4
MATH 1150 Pre-Calculus Algebra & Trigonometry	4		<b><i>NTRI 3750 Nutrition Education</i></b>	2
<i>CHEM 1030 &amp; CHEM 1031 Fund. of Chemistry I</i>	4		<b><i>BCHE 3180 Nutritional Biochemistry</i></b>	3
<i>CHEM 1040 &amp; CHEM 1041 Fund. of Chemistry II</i>	4		<b><i>NTRI 4820 Macronutrients</i></b>	3
<b>Social Sciences - 12 Hours</b>			<b><i>NTRI 4830 Vitamins and Minerals</i></b>	3
Core History 1: _____	3		<b><i>NTRI 4090 Prof. Issues in Dietetics and Nutrition</i></b>	1
Core History 2: _____	3		<b><i>NTRI 4560 Food Systems Operations</i></b>	2
<i>PSYC 2010 Introduction to Psychology</i>	3		<b><i>NTRI 4561 Food Systems Operations Lab</i></b>	2
Social Science: _____	3		<b><i>NTRI 4620 Public Health Nutrition</i></b>	3
<b>Core Humanities - 12 Hours</b>			<b><i>NTRI 5020 Medical Nutrition I</i></b>	4
Core Literature: _____	3		<b><i>NTRI 5030 Medical Nutrition II</i></b>	4
COMM 1000 Public Speaking	3		<b><i>NTRI 5560 Nutrition and Food Service Mngt</i></b>	3
PHIL 1030 Ethics and the Health Sciences	3		<b><i>NTRI 5760 Nutritional Counseling</i></b>	2
Core Fine Arts: _____	3		<b><i>NTRI 5820 Nutrition in the Life Cycle</i></b>	3
REQUIRED HUMAN SCIENCES CORE	9	SEM.	<b><i>NTRI 5830 Nutritional Genomics</i></b>	3
<b><i>CADS 2000 Global Consumer Culture</i></b>	3		<b><i>NTRI 5910 Clinical Practice in Dietetics</i></b>	1
<b><i>HDFS 2000 Marriage &amp; Family in a Global Cont.</i></b>	3		UNIV 4AA0-HS1 Undergraduate Graduation <sup>1</sup>	0
<b><i>NTRI 2000 Nutrition and Health</i></b>	3			
REQUIRED SUPPORTING COURSES	22	SEM.		
<b><i>BIOL 1020 Principles of Biology</i></b>	4			
<b><i>BIOL 3200 General Microbiology</i></b>	4		Free Electives	3
<i>BIOL 2500 Human Anatomy and Physiology I</i>	4			
<i>BIOL 2510 Human Anatomy and Physiology II</i>	4			
<i>CHEM 2030 Survey of Organic Chemistry</i>	3			
STAT 2510 Stat. for Biological and Health Sciences	3			

**Total: 120 Semester Hours****University Core Notes:** Students in the Honors College may take equivalent honors courses. May use online version of courses.

Literature options: ENGL 2200, 2210, 2230, 2240, 2250 or 2260

History options: HIST 1010 and 1020 or 1210 and 1220

Social Science options: ANTH 1000, GEOG 1010, POLI 1050, POLI 1090, PYSC 2010, SOCY 1000, UNIV 2720, SUST 2000

Fine Arts options: ARCH 2600, ARTS 1510, 1710, 1720, 1730, 1510, MUSI 2730, 2740, 2750, MDIA 2350, ENVN 2040, THEA 2010

**College and Department Notes:**

Required major courses and College core courses are in bold. Grades in these courses are used to calculate the GPA in the major and to meet graduation standards.

All Human Sciences majors are required to have a laptop. Please refer to the CHS website for specifications.

Auburn University's Didactic Program and Dietetics is accredited by the Accreditation Council for Education in Nutrition and Dietetics of the Academy of Nutrition and Dietetics, 120 South Riverside Plaza, Suite 2000, Chicago, IL 60606-6995, (312) 899-0040 ext. 5400. <http://www.eatright.org/ACEND>.<sup>1</sup>Seniors must register for UNIV 4AA0-HS1 the term they plan to graduate (non-credit class for clearing graduation).**Courses in italics require a grade of "C" or higher. Students must maintain a minimum GPA of 3.0 in all upper division DPD courses.**

††Students will be required to apply to the junior year of the NTDI program. Details can be found at the NTDI website.

**PRE-DIETETICS OPTION (NTDX)++**  
**PROPOSED SEMESTER CURRICULUM MODEL**

FRESHMAN YEAR

Fall Semester			Spring Semester		
<i>CHEM 1030</i>	<i>Fundamentals of Chemistry I</i>	3	<i>BIOL 1020</i>	<i>Principles of Biology</i>	4
<i>CHEM 1031</i>	<i>Fundamentals of Chemistry I Lab</i>	1	<i>CHEM 1040</i>	<i>Fundamentals of Chemistry II</i>	3
<i>ENGL 1100</i>	<i>English Composition I</i>	3	<i>CHEM 1041</i>	<i>Fundamentals of Chemistry II Lab</i>	1
HISTORY	History Core 1	3	<i>ENGL 1120</i>	<i>English Composition II</i>	3
MATH 1150	Pre-Calculus Algebra & Trigonometry	4	HISTORY	History Core 2	3
<i>PSYC 2010</i>	<i>Introduction to Psychology</i>	<u>3</u>	<b><i>NTRI 2000</i></b>	<b><i>Nutrition and Health</i></b>	<u>3</u>
		17			17

SOPHOMORE YEAR

Fall Semester			Spring Semester		
<i>BIOL 2500</i>	<i>Human Anatomy and Physiology I</i>	4	<i>BIOL 2510</i>	<i>Human Anatomy and Physiology II</i>	4
STAT 2510	Stats for Biol and Health Sciences	3	<i>CHEM 2030</i>	<i>Survey of Organic Chemistry</i>	3
LITERATURE	Core Literature	3	COMM 1000	Public Speaking	3
	Core Fine Arts	<u>3</u>	<b><i>NTRI 2070</i></b>	<b><i>Careers in Nutrition, Dietetics/Wellness</i></b>	<u>1</u>
		13	<b><i>CADS 2000</i></b>	<b><i>Global Consumer Culture</i></b>	<u>3</u>
					14

JUNIOR YEAR

Fall Semester			Spring Semester		
<b><i>BCHE 3180</i></b>	<b><i>Nutritional Biochemistry</i></b>	<b>3</b>		Core Social Science	3
<b><i>BIOL 3200</i></b>	<b><i>General Microbiology</i></b>	<b>4</b>	<b><i>HDFS 2000</i></b>	<b><i>Marriage &amp; Family in a Global Context</i></b>	<b>3</b>
PHIL 1030	Ethics and Health Sciences	3	<b><i>NTRI 3750</i></b>	<b><i>Nutrition Education</i></b>	<b>2</b>
<b><i>NTRI 3560</i></b>	<b><i>Experimental Study of Foods</i></b>	<b>4</b>	<b><i>NTRI 4820</i></b>	<b><i>Macronutrients</i></b>	<b>3</b>
	ELECTIVE	<u>3</u>	<b><i>NTRI 4830</i></b>	<b><i>Vitamins and Minerals</i></b>	<u>3</u>
		17			14

SENIOR YEAR

Fall Semester			Spring Semester		
<b><i>NTRI 4090</i></b>	<b><i>Prof. Issues in Dietetics and Nutrition</i></b>	<b>1</b>	<b><i>NTRI 5030</i></b>	<b><i>Medical Nutrition II</i></b>	<b>4</b>
<b><i>NTRI 4560</i></b>	<b><i>Food Systems Operations</i></b>	<b>2</b>	<b><i>NTRI 5560</i></b>	<b><i>Nutrition and Food Services Mngt.</i></b>	<b>3</b>
<b><i>NTRI 4561</i></b>	<b><i>Food Systems Operations Lab</i></b>	<b>2</b>	<b><i>NTRI 5760</i></b>	<b><i>Nutritional Counseling</i></b>	<b>2</b>
<b><i>NTRI 4620</i></b>	<b><i>Public Health Nutrition</i></b>	<b>3</b>	<b><i>NTRI 5830</i></b>	<b><i>Nutritional Genomics</i></b>	<b>3</b>
<b><i>NTRI 5020</i></b>	<b><i>Medical Nutrition I</i></b>	<b>4</b>	<b><i>NTRI 5910</i></b>	<b><i>Clinical Practicum in Dietetics</i></b>	<b>1</b>
<b><i>NTRI 5820</i></b>	<b><i>Nutrition in the Life Cycle</i></b>	<u>3</u>	UNIV4AA0	HS1 Undergraduate Graduation <sup>1</sup>	<u>0</u>
		15			13

**Total: 120 Semester Hours**

**University Core Notes:** Students in the Honors College may take equivalent honors courses. Students may take online version of courses.

Literature options: ENGL 2200 and 2210 or 2230 and 2240 or 2250 and 2260

History options: HIST 1010 and 1020 or 1210 and 1220

Social Science options: ANTH 1000, GEOG 1010, POLI 1050, POLI 1090, PYSC 2010, SOCY 1000, UNIV 2720, SUST 2000

Fine Arts options: ARCH 2600, ARTS 1510, 1710, 1720, 1730, 1510, MUSI 2730, 2740, 2750, MDIA 2350, ENVD 2040, THEA 2010

**College and Department Notes:**

Required major courses and College core courses are in bold. Grades in these courses are used to calculate the GPA in the major and to meet graduation standards.

All Human Sciences majors are required to have a laptop. Please refer to the CHS website for specifications.

Auburn University's Didactic Program and Dietetics is accredited by the Accreditation Council for Education in Nutrition and Dietetics of the Academy of Nutrition and Dietetics, 120 South Riverside Plaza, Suite 2000, Chicago, IL 60606-6995, (312) 899-0040 ext. 5400.  
<http://www.eatright.org/ACEND>.

<sup>1</sup>Seniors must register for UNIV 4AA0-HS1 the term they plan to graduate (non-credit class for clearing graduation).

***Courses in italics require a grade of "C" or higher. Students must maintain a minimum GPA of 3.0 in all upper division DPD courses.***

++Students will be required to apply to the junior year of the NTDI program. Details can be found at the NTDI website.

Student  
 SID 90  
 E-mail @auburn.edu

Date of Entry  
 Advisor

### CURRICULUM IN NUTRITION Option: Wellness (NTWE)

Department of Nutrition, Dietetics and Hospitality Management, College of Human Sciences, Auburn University, AL

UNIVERSITY CORE CURRICULUM	42	SEM.	Required NTRI Major Core	27
ENGL 1100 English Composition I	3		<b>NTRI 2010 Basic Sports Nutrition</b>	3
ENGL 1120 English Composition II	3		<b>NTRI 2070 Careers in Nutr., Dietetics &amp; Wellness</b>	1
MATH 1150 Pre-Calculus Algebra & Trigonometry	4		<b>NTRI 3560 Experimental Study of Foods</b>	4
CHEM 1030 & CHEM 1031 Fund. Of Chemistry I	4		<b>NTRI 3750 Nutrition Education</b>	2
CHEM 1040 & CHEM 1041 Fund. Of Chemistry II	4		<b>BCHE 3180 Nutritional Biochemistry</b>	3
<b>Social Sciences - 12 Hours</b>			<b>NTRI 4620 Public Health Nutrition</b>	3
Core History 1: _____	3		<b>NTRI 4820 Macronutrients</b>	3
Core History 2: _____	3		<b>NTRI 4830 Vitamins and Minerals</b>	3
PSYC 2010 Introduction to Psychology	3		<b>NTRI 5100 Nutrition in Disease Prevention</b>	2
Social Science Core: _____	3		<b>NTRI 5820 Nutrition in the Life Cycle</b>	3
<b>Core Humanities - 12 Hours</b>			UNIV 4AA0-HS1 Undergraduate Graduation <sup>1</sup>	0
Core Literature: _____	3		PROFESSIONAL ELECTIVES (choose 17 hours) <sup>2</sup>	17
COMM 1000 Public Speaking	3		NTRI 5560	3
PHIL 1030 Ethics and the Health Sciences	3		HRMT 1010	2
Core Fine Arts: _____	3		COMP 1000	2
<b>REQUIRED HUMAN SCIENCES CORE</b>	9	SEM.	KINE 3400	3
<b>CADS 2000 Global Consumer Culture</b>	3		KINE 3680	4
<b>HDFS 2000 Marriage &amp; Family in a Global Context</b>	3		KINE 4450	3
<b>NTRI 2000 Nutrition and Health</b>	3		COMM 2010	3
<b>REQUIRED SUPPORTING COURSES</b>	23	SEM.	COMM 2410	3
<b>BIOL 1020 Principles of Biology</b>	4		COMM 3100	3
KINE 1100 or 1103 Wellness	2		COMM 3110	3
BIOL 2500 Human Anatomy and Physiology I	4		COMM 3450	3
BIOL 2510 Human Anatomy and Physiology II	4		COMM 3500	3
CHEM 2030 Survey of Organic Chemistry	3		JRNL 1100	3
ENGL 3040 Technical Writing	3		JRNL 2210	3
STAT 2510 Stat. for Biological and Health Sciences	3		JRNL 3220	3
			HDFS 2010	3
Free Electives	6	SEM.	Courses from Business minor, Hunger minor, Joseph S. Bruno Auburn Abroad in Italy, PYSC, COUN, Foreign Lanuage, Undergraduate Research	

### 124 Semester Hours

**University Core Notes:** Students in the Honors College may take equivalent honors courses. Students may take online versions of courses.

Literature options: ENGL 2200, 2210, 2230, 2240, 2250 or 2260

History options: HIST 1010 and 1020 or 1210 and 1220

Social Science options: ANTH 1000, GEOG 1010, POLI 1050, POLI 1090, SOCY 1000, UNIV 2720, SUST 2000

Fine Arts options: ARCH 2600, ARTS 1510, 1710, 1720, 1730, MUSI 2730, 2740, 2750, MDIA 2350, ENVD 2040, THEA 2010

### College and Department Notes:

Required major courses and College core courses are in bold. Grades in these courses are used to calculate the GPA in the major and to meet graduation standards.

All Human Sciences majors are required to have a laptop. Please refer to the CHS website for specifications.

<sup>1</sup>Seniors must register for UNIV 4AA0-HS1 the term they plan to graduate (non-credit class for clearing graduation).

<sup>2</sup> Other Professional Electives as approved by the Department Head may be taken.

**NUTRITION (NTRI) - NUTRITION WELLNESS OPTION (NTWE)**  
**PROPOSED SEMESTER CURRICULUM MODEL**

FRESHMAN YEAR

<b>Fall Semester</b>			<b>Spring Semester</b>		
CHEM 1030	Fundamentals of Chemistry I	3	<b>BIOL 1020</b>	<b>Principles of Biology</b>	<b>4</b>
CHEM 1031	Fundamentals of Chemistry I Lab	1	CHEM 1040	Fundamentals of Chemistry II	3
ENGL 1100	English Composition I	3	CHEM 1041	Fundamentals of Chemistry II Lab	1
HISTORY	Core History I	3	ENGL 1120	English Composition II	3
MATH 1150	Pre-Calculus Algebra & Trigonometry	4	HISTORY	Core History 2	3
PSYC 2010	Introduction to Psychology	3	<b>NTRI 2000</b>	<b>Nutrition and Health</b>	<b>3</b>
		<u>17</u>			<u>17</u>

SOPHOMORE YEAR

<b>Fall Semester</b>			<b>Spring Semester</b>		
BIOL 2500	Human Anatomy and Physiology I	4	BIOL 2510	Human Anatomy and Physiology II	4
	Social Science Core	3	CHEM 2030	Survey of Organic Chemistry	3
LITERATURE	Core Literature	3	COMM 1000	Public Speaking	3
<b>NTRI 3560</b>	<b>Experimental Study of Foods</b>	<b>4</b>	<b>CADS 2000</b>	<b>Global Consumer Culture</b>	<b>3</b>
FINE ARTS	Fine Arts Core	3	<b>NTRI 2070</b>	<b>Careers in Nutr. Dietetics &amp; Wellness</b>	<b>1</b>
		<u>17</u>			<u>14</u>

JUNIOR YEAR

<b>Fall Semester</b>			<b>Spring Semester</b>		
<b>BCHE 3180</b>	<b>Nutritional Biochemistry</b>	<b>3</b>	KINE 1100/1103	Wellness	2
	Professional Electives <sup>2</sup>	2	ENGL 3040	Technical Writing	3
<b>NTRI 2010</b>	<b>Basic Sports Nutrition</b>	<b>3</b>	STAT 2510	Stats. for Biol and Health Sciences	3
	Free Electives	2	<b>NTRI 3750</b>	<b>Nutrition Education</b>	<b>2</b>
PHIL 1030	Ethics and the Health Sciences	3	<b>NTRI 4820</b>	<b>Macronutrients</b>	<b>3</b>
		<u>13</u>	<b>NTRI 4830</b>	<b>Vitamins and Minerals</b>	<b>3</b>
					<u>16</u>

SENIOR YEAR

<b>Fall Semester</b>			<b>Spring Semester</b>		
<b>HDFS 2000</b>	<b>Marriage and Family in Global Context</b>	<b>3</b>	<b>NTRI 5100</b>	<b>Nutrition in Disease Prevention</b>	<b>2</b>
<b>NTRI 4620</b>	<b>Public Health Nutrition</b>	<b>3</b>		Professional Electives <sup>2</sup>	9
<b>NTRI 5820</b>	<b>Nutrition in the Life Cycle</b>	<b>3</b>		Free Electives	4
	Professional Electives <sup>2</sup>	6	UNIV4AA0	HS1 Undergraduate Graduation <sup>1</sup>	0
		<u>15</u>			<u>15</u>

**Total: 124 Semester Hours**

**University Core Notes:** Students in the Honors College may take equivalent honors courses. Students may take online version of courses.

Literature options: ENGL 2200, 2210, 2230, 2240, 2250 or 2260

History options: HIST 1010 and 1020 or 1210 and 1220

Social Science options: ANTH 1000, GEOG 1010, POLI 1050, POLI 1090, SOCY 1000, UNIV 2720, SUST 2000

Fine Arts options: ARCH 2600, ARTS 1510, 1710, 1720, 1730, MUSI 2730, 2740, 2750, MDIA 2350, ENVD 2040, THEA 2010

**College and Department Notes:**

Required major courses and College core courses are in bold. Grades in these courses are used to calculate the GPA in the major and to meet graduation standards.

All Human Sciences majors are required to have a laptop. Please refer to the CHS website for specifications.

<sup>1</sup>Seniors must register for UNIV 4AA0-HS1 the term they plan to graduate (non-credit class for clearing graduation).

<sup>2</sup> Other Professional Electives as approved by the Department Head may be taken. See list on page 1 of curriculum guide.