



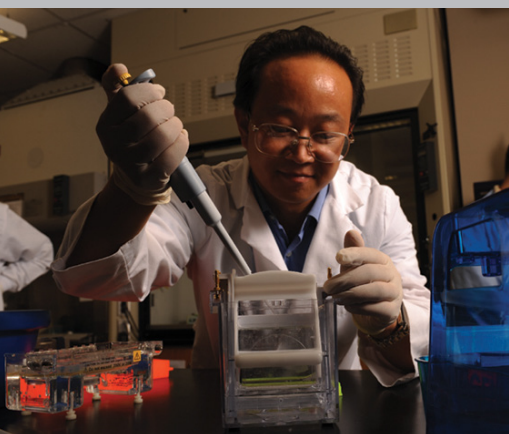
AUBURN UNIVERSITY

COLLEGE OF HUMAN SCIENCES

THIS IS NUTRITION.

Options in
Nutrition/Dietetics,
Nutrition Science, and
Nutrition/Wellness.

Degree Handbook



Science for a Quality Life

THIS IS AUBURN.

College of Human Sciences
Office of Academic Affairs
266 Spidle Hall, Auburn, AL 36849
www.humsci.auburn.edu
(334) 844-4790

**THIS IS A COLLEGE WITH A
“STUDENTS FIRST” PHILOSOPHY
AND A GOAL OF PRODUCING
COMPETENT, SOCIALLY
RESPONSIBLE LEADERS
FOR THE 21ST CENTURY.**

-Dean June Henton



Science for a Quality Life

Table of Contents

A Message from Your Associate Dean for Academic Affairs	4
CHS Mission, Vision, and Belief System	5
Major and Career Opportunities	6
Undecided About Your Major?	7
Career Center Freshman Checklist	8
Tips for Success	9
Who is My Advisor and How Do I Schedule an Appointment?	10
Student Organizations and Selected Honoraries	11
CHS Scholarships and Awards	13
Computer Competency Test (COMP 1AA0)	15
Recommended Computer Configuration (minimum 2016-17	16
Business Minor	17
International Minor in Human Sciences	18
Human Development and Family Studies Minor	19
Hunger Studies Minor	20
Philanthropy and Nonprofit Studies Minor	21
AP, IB, CLEP Information	22
CHS Administrative Staff	26
My Notes Page	27
Major: Nutrition	29
Nutrition/Dietetics	31
Nutrition/Dietetics Application Information	33
Frequently Asked Questions About Careers in Dietetics	34
Tentative Semester Course Offerings	36
NDHM Faculty	37
Career Pathways Map - Nutrition	38
Curriculum	39

A Message from Your Associate Dean for Academic Affairs

War Eagle!

On behalf of the College of Human Sciences (CHS), I would like to extend a warm welcome to you and your family as we begin Camp War Eagle 2016. The team of academic advisors and staff in the Office of Academic Affairs is here to guide you throughout your academic journey at Auburn University. During Camp War Eagle, the Office of Academic Affairs staff will introduce you to the programs and resources in the College of Human Sciences and assist you in planning your first semester of classes. Our goal is to familiarize you with the College and ensure that you are registered with a full course schedule in order for you to leave Camp War Eagle feeling comfortable and prepared for beginning classes at Auburn this fall.

Being the parent of a college student myself, I know this is an exciting time for you and your family. The College of Human Sciences faculty and staff are delighted that you have chosen CHS to be your home away from home, and we look forward to assisting you as you take part in the unique opportunities which lie ahead. The College of Human Sciences is a dynamic learning environment with numerous opportunities for students to get involved, develop their leadership abilities, and connect with the broader world around them. With a small faculty-student ratio and fantastic opportunities for studying abroad, service learning, and undergraduate research, CHS students can often be found experiencing learning outside of the classroom. The College of Human Sciences is privileged to offer a permanent campus in Ariccia, Italy, where many Human Sciences students choose to study abroad for a semester to earn the International Minor in Human Sciences. The College also offers numerous other study abroad opportunities which have included South Africa, Ireland, Fiji, New Zealand, Argentina, Peru, Cuba, the United Kingdom, and Jordan, as well as study/travel opportunities to locations such as New York, Napa, and Chicago.

In the College of Human Sciences, you will experience a warm, friendly, supportive environment where you are treated as a valued student. Human Sciences is a place that will help you grow academically and prepare you for challenging and rewarding careers in the global marketplace. Thank you for choosing the College of Human Sciences, and please feel free to contact the Office of Academic Affairs with any academic advising-related questions you may have now or in the future.

Sincerely,



Dr. Susan Hubbard
Associate Dean and Professor
College of Human Sciences
266 Spidle Hall
Auburn, AL 36849
334-844-4790



CHS Mission, Vision, and Belief System

Mission

The mission of the College of Human Sciences is to enhance human well-being in Alabama, the nation, and the world through the integrated study of individuals and families in their near environment. Human Sciences programs educate professionals, generate knowledge, and deliver research-based educational programs to contribute to the quality of life of families and individual consumers and to the economic growth of Alabama business and industry.

Vision

The College of Human Sciences is a *dynamic, challenging learning environment* where students become professionally competent, globally aware, and socially engaged as they develop into 21st century leaders. This academic paradigm that reaches beyond the classroom to open students' minds and broaden world views, differentiates CHS graduates in the global marketplace. It further enables them to positively impact the health and well-being of individuals, families, and consumers in pursuit of a sustainable world. CHS students and faculty will excel locally and internationally, thus elevating the reputation of Auburn University with the College of Human Sciences setting the quality standards by which competing programs are measured.



- Global issues impact the well-being of individuals, families, and communities locally and worldwide.
- Human diversity generates a dynamic force for progress.
- Stewardship of the earth's human and natural resources is the responsibility of each generation.
- Philanthropy is vital to solving social problems and improving quality of life.

- A genuine commitment to service excellence and lifelong learning is the foundation for organizational and professional success.

World-class education is best defined by graduates who are professionally competent, globally aware, and socially engaged.

- Professional integrity and ethical behavior are best promoted by an integrated set of personal and professional values.
- Intellectual discovery and the application of knowledge are strengthened through innovative partnerships.
- Contemporary issues are complex and most effectively addressed by multidisciplinary and transdisciplinary approaches.
- Next generation technologies are critical to the preparation of students for success in the global, knowledge-based economy.
- Twenty-first century learning requires that students and faculty reach beyond the classroom to gain practical experiences, an awareness of emerging trends, and a realistic perspective of their place in a rapidly changing world.

Belief System

The College of Human Sciences is distinguished by a commitment to the integration of the following quality of life premises:

- Quality of life is a function of the relationship between people and their environments.

Major and Career Opportunities

The College of Human Sciences at Auburn University provides a vibrant, engaging environment where the best and the brightest study with outstanding faculty who demonstrate the caring concern so important to the human sciences. The College of Human Sciences is committed to providing world-class education that requires students to reach beyond the classroom to gain practical experiences, an awareness of emerging trends, and a realistic perspective of their place in the world.

In addition, Human Sciences offers you much more:

- Faculty/Academic Advisor Assigned to Every Student
- Highly Qualified Faculty as Teachers and Researchers
- Senior Level Professional Internships
- Outstanding Career Placements
- International Focus Integrated into all Curricula
- Study Tours, Field Trips, and Service or Experiential Learning Opportunities
- Extraordinary Opportunities to Learn From Visiting Lecturers
- International Minor in Human Sciences that students may earn on campus in Arricia, Italy



Our graduates are prepared for exciting, rewarding careers in a global marketplace and are ready to meet the challenges of our changing world.

Majors

- **Apparel Merchandising, Design and Production Management**
 - Apparel Merchandising Option*
 - Apparel Design and Production Management Option*
- **Interior Design**
- **Human Development and Family Studies**
- **Human Development and Family Studies with Early Childhood Education**
- **Nutrition**
 - Dietetics Option*
 - Wellness Option*
 - Nutrition Science Option (Pre-Medical, Pre-Dental, Pre-Physical or Pre-Occupational Therapy)*
- **Hotel and Restaurant Management**
- **Global Studies in Human Sciences**

Minors

- International Minor in Human Sciences
- Philanthropy and Nonprofit Studies Minor
- Human Development and Family Studies Minor
- Hunger Studies Minor

Career Opportunities

SCIENCE

Registered Dietitian Nutritionist (RD/RDN)
Pharmaceutical Sales Representative
Science and Health Journalist
Pre-Health Career Preparation (Pre-Medicine, Pre-Dentistry, Pre-Physical Therapy)
Quality Control Analyst
Product Testing Manager
Food Technologist
Research Lab Associate

BUSINESS

Apparel Buyer
Food and Beverage Manager
Entrepreneur
Hotel Manager
Apparel Engineer/Production Manager
Retail Marketer/Store Manager
Sales/Brand Manager
Public Relations/Media Professional
Global Sourcing Director

DESIGN

Interior Designer
Product Developer
Apparel Designer
Lighting Specialist
Fashion or Interiors Journalist
Fashion Consultant/Stylist
Costumer Curator
Computer-Aided Design Specialist
Color Specialist
Visual Merchandiser

HUMAN RELATIONS

Non-profit Organization Coordinator
Day Care/Preschool Teacher
Child Life Specialist
Child and Family Policy Advocate
Senior Citizen Center Manager
Early Learning Educator
Youth Ministry Program Director
Juvenile Program Associate
Human Resources Specialist

Undecided About Your Major?

Are you undecided about a major? You are not alone. Many students come to Auburn uncertain about their major. In the College of Human Sciences, we will help you select an area of study that is right for you.

If yes...

Then consider...

Do you like scientific experiments?
Are you interested in the medical field?
Do you anticipate attending graduate school?

- Nutrition Science

Do you want to make a contribution to society?
Do you like figuring out why things work the way they do?
Are you interested in wellness and physical fitness?
Do you appreciate the connection between health and nutrition?
Are you interested in attending graduate school?

- Nutrition/Dietetics
- Nutrition Wellness

Do you like working with people?
Do you enjoy travel?
Can you get things done?
Did you serve as an officer of your class?
Do you enjoy making decisions or analyzing tough situations?
Do you wish you could own your own business?
Do you like a challenge?

- Hotel and Restaurant Management
- Apparel Merchandising
- Global Studies in Human Sciences

Do your friends say you have a flair for color or design?
Do you make your own clothes and do ingenious things with patterns?
Are you inclined to redesign or rearrange your living environment?
If something doesn't work for you, do you redesign it so it does?

- Interior Design
- Apparel Design and Production Management

Would you like to find solutions to some of society's more pressing problems, like poverty, access to health care, affordable housing, environmental issues, and the quality of life of children, teens, or elderly people?

- Human Development and Family Studies
- Global Studies in Human Sciences
- Interior Design

Do you enjoy working with people?
Are you interested in influencing public policies that impact the future of children and families?
After your bachelor's degree, do you plan to pursue additional training in counseling, education, or seminary?

- Human Development and Family Studies

Career Center Freshman Checklist

Career Center Freshman Checklist

taking your first steps

1

Set up your Tiger Recruiting Link (TRL) account
jobs.auburn.edu

Attend Internship & Part-Time Job Fair
Fall & Spring Semesters

2

3

Meet w/a career counselor to discuss career plans/goals
Drop by during walk-in hours | auburn.edu/career

Complete the FOCUS assessments to gain insight into career direction
auburn.edu/career/assessments

4

5

Explore "What Can I Do With a Major In...?" resource
auburn.edu/career/students

View Candid Career video informational interviews
auburn.edu/career/students

6

7

Shadow or interview a professional in your career field of interest

Practice interview skills with InterviewStream resource
auburn.edu/career/interviews

8

9

Join social/service clubs & professional/leadership organizations

View the Pathway: Major Guides for your major
auburn.edu/career/pathways

10

11

Connect via social media
[@AUCareer](https://twitter.com/AUCareer)



Auburn University Career Center
303 Martin Hall | 334.844.4744 | auburn.edu/career
To schedule an appointment in an accessible location, please call.
Auburn University is an equal opportunity educational institution/employer.

Tips for Success

Become familiar with the following scheduling aids:

- **Schedule of Courses – online (AU Access)**
- **Curriculum Model**
- **Schedule of Department Courses**
- **Schedule Planning Sheet**
- **University Core Requirements for your Specific Major**
- **Auburn University Bulletin – online (www.auburn.edu/bulletin)**
- **Degree Works**

Please make sure you have an accurate local address, e-mail address, and cell phone number on AU Access. Please update this information as it changes.

You will need to check your Auburn e-mail on a daily basis.

Become familiar with Academic Support Services, the Auburn University Career Center, and other campus resources.

Get to know your Academic Advisor through regular advising appointments.

In order to graduate as projected based on your curriculum model, it is imperative that you complete your major course sequences. Do not drop a prerequisite course without clearing it with your advisor.

Maintain a written record of your progress by filling in your curriculum sheet as you complete courses each semester. Maintain an academic file including curriculum sheet and any other documentation.

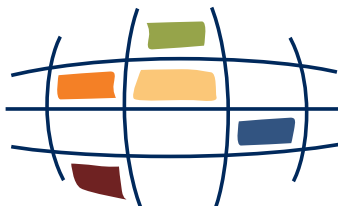
Accept responsibility for your academic progress. Be informed and be prepared to take responsibility for your scheduling decisions.

Contact the Academic Affairs office (334/844-4790) if you are out of class due to an extended illness or other problems which prevent you from attending class. If you are unable to contact your instructors, your advisor will assist you.

REMEMBER that you may not drop classes after mid-semester unless there are extenuating circumstances. Only the CHS

Associate Dean for Academic Affairs can determine if you meet that criteria—not your instructor, you or your parents.

Stay in contact with your academic advisor via email or in person.



Who is My Advisor and How Do I Schedule an Appointment?

Who is my advisor?



Kim Parker -
Advises Last Names A-J
266 Spidle Hall
parkeka@auburn.edu
334-844-4790



Katie Lackey -
Advises Last Names K-Z
266 Spidle Hall
lackekm@auburn.edu
334-844-4790

To Schedule an Appointment:

Go to:
<http://www.humsci.auburn.edu/acad/>
and click the link in the middle of the page to “Schedule an advising appointment”.

1. Enter your Global User ID (First part of Auburn email - Example- abc0001)
2. Enter your Password
3. Click “Continue”
4. Click “Make Appointment”
5. Search for available times by selecting a date, start time, and end time
6. Select your advisor’s name
7. Click “Find Appointments”
8. Select the time that is best for you!
9. Select the reason that best describes why you need to meet with your advisor. To select more than one reason, hold down “Control” on your keyboard.
10. Enter your phone number and email address.
11. Confirm your email address by entering it again.

12. Click “Continue”
13. You should be directed to a confirmation screen and also receive a confirmation email from chsadvicing@auburn.edu
14. In the confirmation email, you will find a link to cancel your appointment if needed.

To Cancel an Appointment:

1. Enter your Global User ID (First part of Auburn email Example- abc0001)
2. Enter your Password
3. Click “Continue”
4. Click “View or Cancel Appointments”
5. Select the appointment you wish to cancel
6. Click “OK” to cancel appointment
7. Select “Cancelled by Student”
8. Click “Continue”
9. Click “Log Out”

To schedule an academic advising appointment, visit
www.humsci.auburn.edu/acad and click
“Schedule an Advising Appointment” or call (334) 844-4790.
“Walk-in Wednesdays”: 9-11am and 1-3pm, Spidle 266.

Student Organizations and Selected Honoraries

Students in Human Sciences may enhance their academic program by participating in a variety of student organizations and honoraries. Involvement with peers in these organizations can often help students develop leadership and communication skills, explore professional interests and career opportunities, and meet other students and faculty. Students are encouraged to review the information about student organizations and contact those that interest them.

Student Organizations

American Society of Interior Designers

The American Society of Interior Designers (ASID) Student Chapter/Department of Consumer and Design Sciences is an affiliate of the American Society of Interior Designers, a professional society of interior designers. The primary purpose of this organization is to enlarge students' understanding of the interior design profession and the role they might have with this organization through Allied and Professional membership. All majors in Interior Design are eligible for membership. Activities include student participation in events sponsored by Alabama ASID and National ASID organizations, field trips, design competitions, and other types of pre-professional development activities. Contact the Department Head, Department of Consumer and Design Sciences, for further information. (334) 844-4084

Apparel Merchandising and Design Association

The Apparel Merchandising and Design Association (AMDA) is an organization for students enrolled in the apparel merchandising and design majors within the Department of Consumer and Design Sciences. It has been created to support and encourage the students in their education and future careers within the fashion industry. AMDA helps to connect students with professionals in the industry for internships and jobs. AMDA sponsors an annual Fashion Event including a fashion show and design exhibition. Proceeds from the Fashion Event help to support a peer giving scholarship to support AMDP students. Contact the Department Head, Department of Consumer and Design Sciences, for further information. (334) 844-4084

Auburn University Student Chapter of Club Managers

The Auburn University Student Chapter of Club Managers Association of America (CMAA) was chartered in September 1990. This student chapter is recognized by the Alabama Chapter and national headquarters of CMAA and was the 20th student chapter to be chartered in the U.S. Membership is open to all Hotel and Restaurant Management majors who have an interest in club management or who identify with the standards of club management. Guest speakers, field trips to private clubs, and attendance at the CMAA National Conference are among the activities of this group. Contact the Department Head, Department of Nutrition, Dietetics and Hospitality Management for further information. (334) 844-4261

Human Sciences Student Ambassadors

The Human Sciences Student Ambassadors is a select group of men and women who serve as ambassadors for the College of Human Sciences. The ambassador's major role is to represent the College of Human Sciences and provide information about students, faculty, academic programs, and careers in Human Sciences to prospective students and their families, alumni, and visiting dignitaries. Ambassadors assist at College and University-sponsored events, conduct tours of Human Sciences facilities, correspond with interested students and their families, and meet with advisory councils and the Dean's Development Board. Contact Academic Affairs, College of Human Sciences, for further information. (334) 844-4790

International Interior Design Association

The International Interior Design Association (IIDA) Student Chapter/Department of Consumer and Design Sciences is an affiliate of the International Interior Design Association of Designers, a professional society of interior designers. The primary purpose of this organization is to work toward the advancement of the value of interior design and its practitioners as well as to cultivate leadership within the profession. IIDA seeks to enlarge students' understanding of the interior design profession internationally and the role they might have with this organization through Allied and Professional membership. All majors in Interior Design are eligible for membership. Activities include student participation in events sponsored by Alabama IIDA and National IIDA organizations, field trips, design competitions, and other types of

Student Organizations (continued)

pre-professional development activities. Contact the Department Head, Department of Consumer and Design Sciences, for further information. (334) 844-4084

National Society of Minorities in Hospitality

NSMH, formally known as the National Society of Minorities in Hospitality, is one of the largest student-led organizations in the United States. Founded in 1989, there are currently over 90 Universities and Colleges with an active NSMH chapter. The goals of NSMH are to educate and assist future leaders of the hospitality industry, provide networking opportunities, and promote diversity in hospitality. Contact the Department Head, Department of Nutrition, Dietetics and Hospitality Management, for further information. (334) 844-4261

Student Dietetic Association

The Student Dietetic Association (SDA) is a student organization affiliated with the Academy of Nutrition and Dietetics (AND). The goals are to involve Auburn students in the expansion and communication of nutrition knowledge through projects such as “National Nutrition Month” programs, lectures on current topics in nutrition, and practical yet fun social events. The Student Dietetic Association allows nutrition and food science students as well as students in other curricula to have a greater understanding of nutrition and the professional applications of nutrition in health care. Contact the Department Head, Department of Nutrition, Dietetics and Hospitality Management, for further information. (334) 844-4261

SELECTED HONOR SOCIETIES

Eta Sigma Delta

Eta Sigma Delta is the national scholastic honorary society for Hotel and Restaurant Management majors. Students must be a junior or senior and have an overall grade point average of 3.00 or higher. Membership is by invitation only.

Gamma Sigma Delta

Gamma Sigma Delta is a scholastic honor society for outstanding students in the College of Human Sciences and the College of Agriculture. Graduating seniors or graduate students, who have a 3.00 or above and who are in the top fifteen percent of their class, are eligible for this organization.

Kappa Omicron Nu

Kappa Omicron Nu is the national honor society for outstanding students in human sciences. Students in the upper fifteen percent of the junior class and the upper twenty percent of the senior class with at least a 3.00 grade point average are eligible for invitation to membership. In addition, students must have completed two upper level courses in the major.

Phi Kappa Phi

The Honor Society of Phi Kappa Phi is a national scholastic honor society which recognizes and encourages academic excellence in all disciplines. Students in the top five percent of the graduating class from each college/school are invited into membership each semester.

CHS Scholarships and Awards

The College of Human Sciences is pleased to have a number of scholarships and awards which are available to students. Additional information about scholarship opportunities may be obtained from the Office of the Dean, College of Human Sciences, 266 Spidle Hall, Auburn University, AL 36849-5601, (334) 844-4790.

Deadline for scholarship applications for current Auburn University students is March 1, 2017. Deadline for incoming students is February 10, 2017. Applications are available through AUSOM.

SCHOLARSHIPS

Elizabeth Lauren "Libbie" Ainsworth Endowed Scholarship
Anamerle Arant Memorial Scholarship
Dorothy Dean Arnold Scholarship
Dr. Mary Eileen Barry Scholarship
Carolyn Horn Beck Endowment for Scholarships
Alma S. Bentley Scholarship
Dorothy Ann Johnston Blackburn Endowment for Scholarships
Daisy Bond Alabama Chapter-ASID Endowed Scholarship
Brannen Family WPB Endowed Scholarship
Milton W. Bresler '73 Scholarship in Interior Design
Lee & Bob Cannon Endowment for Scholarship in Nutrition
Joseph S. Bruno Endowed Scholarship for the Joseph S. Bruno Auburn Abroad in Italy Program
The William Carter Company Endowment for Scholarships
Pao Sen Chi Memorial Endowment Fund for Scholarship in Nutrition
Chicken Salad Chick WPB Endowed Scholarship
Eva Richards Christenberry '48 Endowed Scholarship in Nutrition & Dietetics
Al & Dudley Cook Endowment for Scholarships in the Colleges of Business and Human Sciences
College of Human Sciences Faculty Scholarship
Dekalb Office Annual Scholarship
Ethel Woodruff Draper Endowment for Scholarships
Elza Stewart Drummond Endowed Scholarship
Lewis & Annette Eberdt Endowed Scholarship
Element Health, Inc. Scholarship
Jewel Golden Eubanks '33 Endowed Scholarship
Ruth Legg Galbraith Endowed Scholarship

Dana King Gatchell Scholarship
David B. Haggard Endowment for Scholarships
Delta Upsilon Memorial Scholarship
Dothan Area CVB – Miller/Hollis Endowed Scholarship in HRMT
Glenda S. Harris/Alabama Power Foundation Endowed Scholarship
Sandy & Sally Heely Annual Scholarship in HRMT
Richard W. Henton Endowed Scholarship in INDS
The Hotel at Auburn University & Dixon Conference Center Annual Scholarship in the Joseph S. Bruno Auburn Abroad in Italy Program
Dr. Susan & Representative Mike Hubbard Endowed Scholarship
Interior Elements Annual Scholarship
International Beverage Company, Inc./Bunnahabhain Single Malt Scotch Annual Scholarship in HRMT
Dora Hanson James WPB Endowed Scholarship
Johnston Industries Endowment for Scholarship
Joyce & Roger Lethander Endowment for Scholarship
Larson-Peterson WPB Endowed Memorial Scholarship for Consumer and Design Sciences
Don Logan - Southern Progress Endowed Scholarship
Jane Campbell Lorendo & Gene L. Lorendo Scholarship
Arlene Rushing Lowe Fund for Excellence
Belinda Reynolds Michaud Endowment for Scholarships
Norma & Varnell Moore Endowed Scholarship for International Study
Callie Stone Nash WPB Endowed Scholarship
Sallye Roe Nunn Endowed Scholarship
Parthenon Prints/Bay Point Endowed Scholarship
Delana Carol Pickens Memorial Endowed Scholarship
Jeanne M. Priester Endowed Fellowship for Doctoral Study
Adelia Russell Charitable Foundation Endowed Scholarship
Floris Copeland Sheppard Endowment for Scholarship
Pauline Sorrel Soberg Endowed Scholarship
Marion Walker Spidle Scholarship
Margaret Valentine Smith Annual Scholarship
Katherine L. Stanley Endowed Scholarship
Molly Stone Given Endowed Scholarship
Tiger Rags Endowed Scholarship/Graduate Fellowship
Don Woollen Endowed Fund for Excellence
Women's Philanthropy Board Annual Scholarship
Women's Philanthropy Board Endowed Scholarship

(continue to next page)

CHS Scholarships and Awards (continued)

AWARDS

AMDA Peer Giving Award
Dorothy Dean Arnold Award
Cobb DeShazo Award
Interior Design Advisory Board Award
INDS Peer Giving Award
Mary A. Layfield Award
Betty Winn Little Award
President's Award
Gorel Hamilton Sodergren Memorial Award
Student Government Association Outstanding Student Award

NOTE: Some scholarships and awards may require an additional departmental application.

NOTE: To receive consideration for need-based scholarships, students must complete the Free Application for Federal Student Aid (FAFSA)*, available online beginning January 1. The FAFSA should be received by Auburn University by March 1.

*The FAFSA is the only form a student is required to complete to be considered for student assistance from any of the Title IV, HEA programs except for information needed to ensure the student's eligibility for such assistance (e.g., information needed to complete verification or to demonstrate compliance with the student eligibility provisions of the HEA and the regulations). Additional information, if requested, will be listed on the student's Tiger I Financial Aid Requirements page after the student's FAFSA results are received. For additional information, visit auburn.edu/finaid.

Computer Competency Test (COMP 1AA0)

The Computer Competency Test is treated as a regular academic course (COMP1@@0) and you will register using Banner. It is offered in Fall and Spring semesters.

The test, which is taken on-line, consists of fifty multiple-choice questions covering the COMP1000 Personal Computer Applications course material (Windows 2000, MS Office XP, FrontPage2002, Internet Explorer). You will need to schedule the course in the semester prior to the term in which you need to complete COMP 1000.

WHO

Interior Design (INDS) students who have not had COMP 1000 or the old CSE, you must either pass the exam or take the course. Under semester requirements, taking the course is in addition to other requirements.



WHEN

The test, which is taken on-line using MyITLab (<http://www.myitlab.com>), consists of questions covering the COMP1000 Personal Computer Applications course material (Windows 8, MS Office 2013, SharePoint 20103). If COMP1000 is required in your major, either as a formal part of the curriculum or as a prerequisite and you think you may already know this material, you should consider taking the COMP1@@0 Computer Competency Test. If you decide to take the Computer Competency Test, schedule it in the semester prior to the term in which you need to complete COMP1000.

Registration is required to take the Computer Competency Test. You may register for the test through Auburn University's Student Registration System (Banner) either by telephone or by computer as you do for all other classes at Auburn University.

You may take the Computer Competency Test only once. Although you will receive no credit hours, if you pass the test with 70% or higher, you will be exempted from taking COMP1000. The test is graded either Satisfactory or Unsatisfactory and this grade becomes part of your permanent transcript. You can only receive credit

for the course (2 semester hours) if you actually take the course and pass it.

You may register for only one test time (one course section) during the semester. If you find that you cannot take the test on that date, you must drop the course (as you would any other course) before mid-term. If you fail to drop the course, COMP1@@0, and do not take the test on your scheduled date, you will receive a grade of Unsatisfactory which becomes part of your permanent transcript. This means you are not eligible to reschedule the test and will need to take COMP1000. The dates and times of the test are listed in the test section offerings in Banner. For any further questions you may have about COMP1@@0 registration, please contact your academic student advisor.

The tests begin promptly on the hour and are 50 minutes in length. The lab will be closed once the tests begin and no one will be admitted until 50 minutes have passed. You should arrive ten minutes before your registered time and have with you a photo identification card. You will be required to provide your IT User ID and Password, so if you do not have one, you should follow University policies to acquire one prior to the test day.

Before attending the Computer Competency Test, if you haven't yet done so, please establish your Windows Domain password. To establish a password for your Auburn Domain User ID, you will need to access the Auburn University Password Page at: <https://oitapps.auburn.edu/Password/pgPassword.aspx> and follow the very easy included instructions. It will take approximately 15 to 30 minutes for the password change to take effect.

WHERE

All testing will take place in the Shelby Technology Center 2205. Students must attend the time for which they are registered.

Recommended Computer Configuration (minimum 2016-17)

All Human Sciences majors are required to have a laptop computer.

Processor	Intel core i5 or i7
Memory	8 GB Recommended
Hard Drive	500 GB (minimum)
Optical Drive	DVD/RW
Operating System	Windows 10
Office Suite	Microsoft Office 365 is available to all Auburn University students free of cost.
Options	<p>Consider purchasing a multi-year (3 year) warranty.</p> <p>Consider choosing an anti-theft option such as Lojack or Computrace by Absolute. Most laptop manufacturers offer an anti-theft option with multi-year subscriptions.</p> <p>Consider purchasing an external hard drive or use cloud storage for back-up (Office 365 provides students with unlimited cloud storage).</p>

Tip: Auburn students can purchase some software through the Auburn University Bookstore at a substantial educational discount. Check with the Auburn University Bookstore before purchasing a software bundle with your new computer.

All AMDP majors must purchase Adobe Photoshop and Illustrator for their laptops.

Pre-Interior Design majors please note:

It is required that Pre-Interior Design students purchase the MacBook Pro laptop with the minimum standards required by the Interior Design program. These specifications are updated for the incoming Pre-Interior Design class each year.

Business Minor Requirements

The following classes are required for the Business Minor:

- ECON 2020*
- ACCT 2810 (student may substitute ACCT 2110)
- FINC 3810 (student may substitute FINC 3610)
- MNGT 3810 (student may substitute MNGT 3100)
- MKTG 3310

**If a student has completed ECON 2020 as a part of the University Core Curriculum, he/she will be required to complete ECON 2030 for the Business Minor.*

To earn a Business Minor, a student needs to earn a cumulative GPA in the Business Minor courses of 2.0 or higher.

Course Prerequisites: Please note that ACCT 2810/2110 and junior standing are the prerequisites for FINC 3810/3610. This prerequisite is strictly enforced by the Finance Department. In addition, ECON 2020 and junior standing are the prerequisites for MKTG 3310. These prerequisites are strictly enforced the Marketing Department.

TO DECLARE A BUSINESS MINOR, PLEASE VISIT 130 LOWDER.

International Minor in Human Sciences

International Minor in Human Sciences

On/Off Campus Program

Name _____ Student Identification Number 90 _____

E-mail Address _____@auburn.edu

Current Major _____ Anticipated Graduation Date _____

Required Courses (7-16 Hours)

Grade Semester Class (Hours)
Completed

		HUSC 5940 (3-12) Study and Travel in Human Sciences
		Foreign Language (4)

Elective Course Requirements (2-11 Hours)

Grade Semester Class (Hours)

		CADS 2000/2003/2007 (3)	Global Consumer Culture
		CADS 3700/3703 (3)	Gender, Wealth and Philanthropy
		CADS 5600 (3)	Global Sourcing in Textiles and Apparel
		HDFS 2000 (3)	Marriage and Family in a Global Context
		HDFS 4680 (3)	Family in a Cross-Cultural Perspective
		HDFS 5300 (3)	Family and Social Policy
		HRMT 5570 (3)	Global Hospitality Management
		NTRI 2000/2003/2007 (3)	Nutrition and Health
		NTRI 4620 (3)	Public Health Nutrition
Overall Minor GPA			

Total 18 credit hours

No more than 6 hours may be lower division (2000 and below) classes.

Courses taken as a requirement for the major or University core cannot be counted toward the minor.

No S/U courses can be counted toward the minor.

Students must earn an overall grade average of "C" (2.0) on all courses taken in the minor.

Some of these courses may have prerequisites that must be met.

Once minor courses are completed, please submit form to 266 Spidle Hall.

Human Development and Family Studies Minor

HUMAN DEVELOPMENT AND FAMILY STUDIES MINOR

Name _____ Student Identification Number 90 _____

E-mail Address _____@tigermail.auburn.edu

Current Major _____ Anticipated Graduation Date _____

Required Courses

Grade Semester Completed

		HDFS 2000	Marriage And Family In a Global Context (3)
		HDFS 2010	Lifespan Human Development in Family Context (3)

Elective Courses

(Select a minimum of 12 hours from the list below; 9 hours must be at the 3000 level or higher.)

Grade Semester Completed

		HDFS 2030	Professional Development and Ethics (3)
		HDFS 3010*	Child Development in the Family (3) Pr. HDFS 2010 or departmental approval
		HDFS 3030*	Adolescent and Adult Development in the Family (3) Pr. HDFS 2010
		HDFS 3040	Human Sexuality Over the Family Life Cycle (3) Pr. HDFS 2000 or SOCY 1000 or PSYC 2010
		HDFS 3060*	Patterns of Family Interaction (3) Pr. HDFS 2000
		HDFS 3080*	Development of Interpersonal Relationships (3) Pr. HDFS 2000
		HDFS 3460	Effective Guidance and Interaction with Young Children (3) Pr. HDFS 3010
		HDFS 3470	Learning Experiences for Young Children (3) Pr. HDFS 3460
		HDFS 3930	Service Learning in Human Development and Family Studies (1-6) LEC. Pr. Junior Standing.
		HDFS 4500	Hospitalized Children and Their Families (3). Pr. HDFS 3010 and junior standing in HDFS or departmental approval
		HDFS 4510	Therapeutic Play (3) Pr. Junior standing
		HDFS 4660	Resource Management for Individuals, Couples, and Families (3)
		HDFS 4670	Parent Education (3) Pr. HDFS 2010
		HDFS 4680*	Family in Cross-Cultural Perspective (3) Pr. HDFS 2000
		HDFS 4700	Gender Roles and Close Relationships (3) Pr. HDFS 2000 or SOCY 1000 or PSYC 2010
		HDFS 4950	Advanced Seminar (3)
		HDFS 4960	Special Problems in HDFS (1-3)
		HDFS 4980	Advanced Undergraduate Research in HDFS (1-5)
		HDFS 5200	Applied Research and Evaluation Methods (3)
		HDFS 5300	HDFS and Social Policy (3)

* Students must have a 2.25 cumulative GPA to enroll in HDFS 3010,3030,3060,3080 and 4680. A "C" grade or better must be earned in each course taken toward the minor and each must be a HDFS course.

Note: Students must earn an overall 2.0 in the minor classes to receive the HDFS minor.

Note: If a student has taken this course to fulfill requirements of the School/College core or the major, it cannot count toward the minor. In this case, the student must select an additional three hour course from the electives above.

Note: No S/U courses can be counted towards the minor.

Online versions of courses are accepted towards minor.

Once minor courses are completed, please submit form to 266 Spidle Hall.

Hunger Studies Minor

Fall 2016

Hunger Studies Minor

Name _____
 E-mail Address _____@auburn.edu
 Anticipated Graduation Date: _____

Student Identification Number 90 _____
 Current Major _____

REQUIRED COURSES

Grade Semester Completed

		HUSC 2000/2003/2007	Hunger: Causes, Consequences, and Responses (3)
		HUSC 4000	Hunger Studies Capstone (3) Pr. HUSC 2000/2003/2007 & Junior standing

ELECTIVE COURSES

Select a minimum of 12 hours from the lists below (at least one class from each list); 9 hours must be at the 3000 level or higher

KNOWLEDGE (MUST SELECT AT LEAST ONE COURSE)

Grade Semester Completed

		AGEC 4300	Agriculture Policy and Trade (3)
		AGRN 1000	Crop Science (4)
		ANSC 1000	Introduction to Animal Sciences (4)
		ANSC 2010	Animals and Society (3)
		CADS 2700/2703	Introduction to Nonprofit Organizations (3)
		ENGL 4040	Public Writing (3)
		FISH 5210	Principles of Aquaculture (3)
		FORV 5440	International Forestry (3)
		HORT 2050	Food for Thought (3)
		NTRI 2000/2003/2007	Nutrition and Health (3)
		NTRI 3560	Experimental Study of Foods (4)
		NTRI 4620	Public Health Nutrition (3)
		NTRI 3750	Nutrition Education (2)
		POLI 5370	Nonprofit Management (3)
		RSOC 3190	Food, Agriculture, & Society (3)

LEADERSHIP AND ADVOCACY (MUST SELECT AT LEAST ONE COURSE)

Grade Semester Completed

		AGRI 3800	Agricultural Leadership Development (2)
		COMM 3450	Intercultural Communications (3)
		HDFS 5300	Family and Social Policy (3)
		PHIL 3100	Intermediate Ethics (3)
		POLI 2100	State and Local Government (3)
		RSOC 5640	Sociology and Community Development (3)
		RSOC 3620	Community Organization (3)
		RSOC 4410	Extension Programs and Methods (3)
		RSOC 5610	Rural Sociology (3)

GLOBAL CITIZENSHIP (MUST SELECT AT LEAST ONE COURSE)

Grade Semester Completed

		ANTH 3000	Culture, Marriage, and the Family (3)
		ANTH 3700	Political Ecology (3)
		CADS 2000/2003/2007	Global Consumer Culture (3)
		ECON 4300	International Economics (3)
		GEOG 2010	Cultural Geography (3)
		GEOG 5350	Economic Geography (3)
		HDFS 4680	Family in Cross-Cultural Perspective (3)
		NTRI 3940	Community Service in Nutrition and Food Science (3)
		POLI 3090	International Relations (3)
		POLI 3100	Introduction to World Affairs (3)
		POLI 4700	Politics of International Economic Relations (3)
		PSYC 3550	Psychology and Culture (3)

Overall Minor GPA

NOTE: If a student has taken any course to fulfill requirements of the School/College core or the major core, it cannot count toward the minor.

NOTE: Some of the courses in this minor may have prerequisites that must be met.

NOTE: Students must earn an overall 2.0 in the Minor Classes to receive the Hunger Studies Minor.

NOTE: Select international study abroad experiences and honors seminar courses with a hunger focus **MAY** be substituted for an elective requirement, pending **PRIOR** approval. The approval process begins with the Director of Hunger and Sustainability Initiatives.

NOTE: No S/U courses can be counted towards the minor.

Once minor courses are completed, please submit form to 266 Spidle Hall.

Philanthropy and Nonprofit Studies Minor

PHILANTHROPY AND NONPROFIT STUDIES MINOR

Name _____ Student Identification Number 90 _____

E-mail Address _____@tigermail.auburn.edu

Current Major _____ Anticipated Graduation Date _____

Required Courses

Grade Semester Completed

		CADS 2700/2703	Introduction to Nonprofit Organizations (3)
		CADS 3700/3703/3707	Gender, Wealth, and Philanthropy (3)
		CADS 4910	Practicum in Philanthropy and Nonprofit Organizations (3)

DISCIPLINARY SUPPORT (Select a minimum of 6 hours from the list below. At least 3 hours must be at the 3000 level or above.)

Grade Semester Completed

		CADS 2000/2003/2007	Global Consumer Culture (3)
		CADS 3940	Study and Travel in Consumer and Design Sciences: Philanthropy and Nonprofit Org. Tour (3)
		HDFS 3930	Service Learning in HDFS (3)
		HDFS 4500	Hospitalized Children and Their Families (3)
		HDFS 4670	Parent Education (3)
		HDFS 4680	Family in Cross-Cultural Perspective (3)
		HDFS 5300	Family and Social Policy (3)
		HUSC 2000/2003/2007	Hunger: Causes, Consequences and Responses (3)
		NTRI 4620	Public Health Nutrition (3)
		NTRI 3940	Community Service in Nutrition (3)
		HRMT 5460	Catering and Event Management (1)
		HRMT 5461	Catering and Event Management Lab (2)
		ACCT 2810	Fundamentals in Accounting (3)
		OVERALL MINOR GPA:	

* If a student has taken this course to fulfill requirements of the School/College core or the major, it cannot count toward the minor. In this case, the student must select an additional three hour course from the electives above.

** Some of these courses may have prerequisites that must be met.

NOTE: Students must earn an overall 2.0 in the Minor Classes to receive the Philanthropy and Nonprofit Studies Minor.

NOTE: No S/U courses can be counted toward the minor.

Once minor courses are completed, please submit form to 266 Spidle Hall.

AP, IB, CLEP Information

Dependent upon the test scores received you may be eligible to receive course credit. The scores should be provided from the testing agency and home report copies are acceptable. Please call (334) 844-2528 to verify what you are eligible to receive.

Note: Auburn University does not accept CLEP credit.

ACT (English) with a score of 30-34 will receive 3 hours credit for ENGL1100 (English Comp I).

ACT (English) with a score of 35-36 will receive 6 hours credit for ENGL1100 & ENGL1120 (English Comp I & II).

SAT (Verbal) with a score of 680-710 will receive 3 hours credit for ENGL1100 (English Comp I).

SAT (Verbal) with a score of 720 and above will receive 6 hours credit for ENGL1100 & ENGL1120 (English Comp I & II).

Advanced Placement Credit Table

AP TEST	Score on AP Test			
	5	4	3	1-2
American Government	3 hrs credit for POLI 1090	3 hrs credit for POLI 1090	No Credit	No Credit
Art History	9 hrs credit for ARTS 1710, 1720 & 1730	6 hrs credit for ARTS 1710 & 1720	3 hrs credit for ARTS 1710	No Credit
Art Studio	6 hrs credit for ARTS 1110 & 1120	3 hrs credit for ARTS 1110	No Credit	No credit
Art General	6 hrs credit for ARTS 1110 & 1120	3 hrs credit for ARTS 1110	No Credit	No Credit
Biology	8 hrs credit for BIOL 1020 & 1030	8 hrs credit for BIOL 1020 & 1030	4 hrs credit for BIOL 1020 or 1000	No Credit
Chemistry	8 hrs credit for CHEM 1030, 1031, 1040 & 1041	4 hrs credit for CHEM 1030, & 1031	No Credit	No Credit
Comparative Government	3 hrs credit for POLI 3120	3 hrs credit for POLI 3120	No Credit	No Credit
Computer Science (A)	3 hrs credit for COMP 1210	3 hrs credit for COMP 1210	No Credit	No Credit
Computer Science (AB)	3 hrs credit for COMP 1210 and 4 hrs credit for 2210	3 hrs credit for COMP 1210 and 4 hrs credit for 2210	No Credit	No Credit
Economics (Micro)	3 hrs credit for ECON 2020	3 hrs credit for ECON 2020	No Credit	No Credit

AP, IB, CLEP Information (continued)

AP TEST	Score on AP Test			
Economics (Macro)	3 hrs credit for ECON 2030	3 hrs credit for ECON 2030	No Credit	No Credit
English (Language and Literature)	6 hrs credit for ENGL 1100 and ENGL 1120	3 hrs credit for ENGL 1100	No Credit	No Credit
Environmental Science	4 hrs SCMH COR2	4 hrs SCMH COR2	No Credit	No Credit
Foreign Language	8 lower division hrs equiv. to 1010 & 1020	8 lower division hrs equiv. to 1010 & 1020	4 lower division hrs equiv. to 1010	No Credit
Human Geography	3 hrs credit for GEOG 1010 (Global Geography) or 2010 (Cultural Geography)	3 hrs credit for GEOG 1010 (Global Geography) or 2010 (Cultural Geography)	No Credit	No Credit
American History	6 hrs credit for HIST 2010 & 2020	3 hrs credit for HIST 2010 and exemption from HIST 2020	No Credit	No Credit
European History	6 hrs credit for HIST 1010 & 1020	3 hrs credit for HIST 1010 and exemption from HIST 1020	No Credit	No Credit
World History	6 hrs credit for HIST 1010 & 1020	3 hrs credit for HIST 1010 and exemption from HIST 1020	No Credit	No Credit
Math: Calculus AB	7 hrs credit for MATH 1130 & 1610	7 hrs credit for MATH 1130 & 1610	7 hrs credit for MATH 1130 & 1610	No Credit
Math: Calculus BC	11 hrs credit for MATH 1130, MATH 1610 & 1620	11 hrs credit for MATH 1130, MATH 1610 & 1620	11 hrs credit for MATH 1130, MATH 1610 & 1620	No Credit
Physics B	8 hrs credit for PHYS 1500 & 1510	4 hrs credit for PHYS 1500	No Credit	No Credit
Physics C Mechanics	4 hrs credit for PHYS 1600	4 hrs credit for PHYS 1600	No Credit	No Credit

AP, IB, CLEP Information (continued)

AP TEST	Score on AP Test			
Physics C Electricity & Magnetism	May take PHYS 2200. After successfully completing PHYS 2200, the student will receive credit for PHYS 1610	May take PHYS 2200. After successfully completing PHYS 2200, the student will receive credit for PHYS 1610	No Credit	No Credit
Physics 1	4 hrs credit for PHYS 1500	4 hrs credit for PHYS 1500	No Credit	No Credit
Physics 2	4 hrs credit for PHYS 1510	4 hrs credit for PHYS 1510	No Credit	No Credit
Psychology	3 hrs credit for PSYC 2010	3 hrs credit for PSYC 2010	No Credit	No Credit
Statistics	3 hrs credit for STAT 2510	3 hrs credit for STAT 2510	3 hrs credit for STAT 2510	No Credit

International Baccalaureate Credit Table

IB Test	Score on IB Test			
	7	6	5	1-4
Biology	8 hrs for BIOL 1020 & 1030	Students who score 5 or 6 on this test or on an appropriate Subsidiary Level Biology test will be eligible to take the biology proficiency examinations for each of BIOL1020 and 1030. The results of these examinations will determine the amount of credit to be assigned and which courses will be waived.		No Credit
Chemistry (Higher Level)	8 hrs for CHEM 1030 & 1040 with labs	8 hrs for CHEM 1030 & 1040 with labs	8 hrs for CHEM 1030 & 1040 with labs	No Credit
Economics (Standard Level)	Credit for ECON 2020 & 2030	Credit for ECON 2020 & 2030	No Credit	No Credit
Economics (Higher Level)	Credit for ECON 2020 & 2030	Credit for ECON 2020 & 2030	Credit for ECON 2020 & 2030	No Credit

AP, IB, CLEP Information (continued)

IB Test	Score on IB Test			
English (A1 Higher Level)	6 sem. hrs for ENGL 1100 and ENGL 1120	3 sem. hrs for ENGL 1100	3 sem. hrs for ENGL 1100	No Credit
History (American Higher Level)	6 hrs credit for HIST 2010 & 2020	6 hrs credit for HIST 2010 & 2020	No Credit	No Credit
History (European Higher Level)	6 hrs credit for HIST 1010 & 1020	6 hrs credit for HIST 1010 & 1020	No Credit	No Credit
Mathematics (Higher Level)	8 hrs credit for MATH 1610 and 1620.	8 hrs credit for MATH 1610 and 1620.	8 hrs credit for MATH 1610 and 1620.	Score of 4: 4 hrs credit for MATH 1610. Score of 1-3: No Credit
Physics (Higher Level)	8 hrs credit for PHYS 1500 & 1510 or be allowed to take PHYS 2200. After successfully completing PHYS 2200, student will receive credit for PHYS 1600 and PHYS 1610.	8 hrs credit for PHYS 1500 & 1510 or be allowed to take PHYS 2200. After successfully completing PHYS 2200, student will receive credit for PHYS 1600 and PHYS 1610.	4 hrs credit for PHYS 1500 or 1600	No Credit

For questions please call 334-844-2528.

CHS Administrative Staff

STAFF	OFFICE	PHONE
Dr. June Henton , <i>Dean</i>	210 Spidle Hall	844-3790
Dr. Jennifer Kerpelman , <i>Associate Dean/Research</i>	210 Spidle Hall	844-3790
Dr. Susan Hubbard* , <i>Associate Dean/Academic Affairs</i> hubbasg@auburn.edu	266 Spidle Hall	844-4790
Ms. Katie Lackey* lackekm@auburn.edu <i>Academic Advisor III</i>	266 Spidle Hall	844-4790
Ms. Kim Parker* parkeka@auburn.edu <i>Academic Advisor III</i>	266 Spidle Hall	844-4790
Ms. Kelly Martin kelly.martin@auburn.edu <i>Student Services Coordinator</i>	266 Spidle Hall	844-4790
Ms. Linda Bruner lrb0018@auburn.edu <i>Student Services Coordinator</i>	266 Spidle Hall	844-4790
Ms. Jan Casson* cassojc@auburn.edu <i>Administrative Associate</i>	266 Spidle Hall	844-4790
Mr. Walter Tolbert tolbewa@auburn.edu <i>Network Manager</i>	148 Spidle Hall	844-3788
Dr. Carol Warfield warficl@auburn.edu <i>Department Head, Consumer and Design Sciences</i>	308 Spidle Hall	844-1329
Dr. Joe Pittman pittmjf@auburn.edu <i>Department Head, Human Development and Family Studies</i>	203 Spidle Hall	844-3242
Dr. Martin O'Neill oneilm1@auburn.edu <i>Department Head, Nutrition, Dietetics and Hospitality Management</i>	328D Spidle Hall	844-3264
Dr. Kate Thornton kate.thornton@auburn.edu <i>Director, Global Education</i>	232 Spidle Hall	844-3748

* For student related issues and questions, please contact Academic Affairs Office at 334-844-4790.

DEPARTMENTAL SUPPORT STAFF	OFFICE	PHONE
Ms. Tracie Burton , <i>CADS Office Administrator</i> burtotl@auburn.edu	308 Spidle Hall	844-4051
Ms. Dorothy McKinnon , <i>HDFS Office Administrator</i> harrido@auburn.edu	278C Spidle Hall	844-3220
Mr. Adam Malone , <i>HDFS Administrative Assistant</i> arm0047@auburn.edu	203 Spidle Hall	844-3245
Ms. Tanya Stringer , <i>NDHM Administrative Assistant</i> tds0001@auburn.edu	328 Spidle Hall	844-4261
Ms. Sue Ann Fox , <i>Administrative Asst./Italy Program</i> saf0001@auburn.edu	232 Spidle Hall	844-3748
Ms. Megan Elliott , <i>Administrative Asst./Italy Program</i> mme0018@auburn.edu	232 Spidle Hall	844-3748

[illegible]

THIS IS HUMAN SCIENCES.

MAJOR- SPECIFIC INFORMATION

Major: Nutrition

Department of Nutrition, Dietetics, and Hospitality Management

About the Majors

The Department of Nutrition, Dietetics and Hospitality Management (NDHM) offers undergraduate majors in Nutrition Science, Nutrition/Dietetics, Nutrition/Wellness, and Hotel and Restaurant Management. All majors take a core of courses that include physical and biological sciences, as well as liberal arts and humanities, providing graduates with a strong educational foundation and excellent career preparation. Graduates of the Nutrition programs and the Hotel and Restaurant Management program are in demand in a variety of health-related, hospitality, and food industry careers.

Nutrition

The field of nutrition is concerned with human physiology and biochemistry and their relationship to human health, diet, and well-being. Nutrition is a science concerned with human physiology, biochemistry, and their relationship to human health, disease prevention, and well-being. Professionals in nutrition do research and provide education and/or counseling to a variety of audiences in many different settings, including hospitals and medical centers, extended care facilities, schools, and public health agencies. A strong interest in science and in working with people are important characteristics for a successful career in the field of nutrition. The NTRI curriculum has three options which permit specialization according to students' specific interests.



Nutrition Science

The Nutrition Science option prepares students for health professional schools, such as medical, dental, optometry, and physical therapy, as well as for graduate study in nutrition and other health-related disciplines. The Nutrition Science option produces graduates with a sound scientific understanding of complex nutrition issues related to health and disease that are highly competitive for acceptance into post-graduate academic programs.

Nutrition/Dietetics

The Nutrition/Dietetics option is designed to prepare students interested in completing the requirements to become credentialed as a Registered Dietitian Nutritionist (RD/RDN). This option prepares students for careers in clinical nutrition, community nutrition, public health, nutrition education and counseling, foodservice management, and food and nutrition in industry. Graduates who successfully complete the Didactic Program in Dietetics are qualified to apply for a post-baccalaureate supervised-practice program, which is a requirement for eligibility to take the National Registration Examination for Dietitians and earn the RD/RDN credential. Auburn University's Didactic Program in Dietetics is accredited by the Accreditation Council for Education in Nutrition and Dietetics of the Academy of Nutrition and Dietetics, 120 South

Riverside Plaza, Suite 2000, Chicago, IL 60606-6995, (312) 899-0040 ext. 5400. [Http://www.eatright.org/ACEND](http://www.eatright.org/ACEND).

Nutrition/Wellness

The Nutrition/Wellness option prepares students for careers in health-related settings. Graduates find positions in non-profit health organizations, hospital-based programs and corporate wellness, and federal, state and local health agencies.

Are you interested in academic preparation leading to Medical, Dental, and Physical Therapy Professional Schools?

Auburn University offers at least three avenues for receiving this preparation. These include programs through the College of Science and Mathematics, the College of Engineering, and through the College of Human Sciences, Department of Nutrition, Dietetics and Hospitality Management. These programs of study include the required coursework for most American medical, dental, physical or occupational therapy applicants and are equally rigorous and challenging. The Nutrition Science option is an excellent choice leading to health professional schools.



Why?

The Nutrition Science curriculum option provides students with a basic knowledge of intake, absorption, and metabolism for food constituents which can be applied to the diagnosis and treatment of disease. It also provides a background in health promotion and disease prevention, thus, underpinning the emphasis on prevention that characterizes current discussions of healthcare reform. Six of the ten leading causes of death in the United States are diet-related. A health care professional with primary training in nutrition will have knowledge about the correlation between eating habits and health and the food supply. Therefore, the Nutrition Science option will provide potential health care professionals with greater nutrition knowledge and a relevant background to enhance health care quality.

So what? Aren't medical schools looking for students with biology or chemistry degrees?

Most professional schools **prefer** that a student obtain a college degree before entrance. However, admissions' committees **do not give preference** to any particular major. Students are encouraged to choose a major that interests them. This is particularly critical in that it enables students to earn a degree that offers alternate career preparation. The reality is that the number of students applying to health professional programs far exceeds available placements. And, students do change their life plans - even students in their senior year of college. Because of these uncertainties, students are encouraged to develop a fall-back plan in case they change their minds or fail to gain admission to the professional school.

What are the career alternatives in Nutrition Science?

Nutrition is a science concerned with human physiology, biochemistry, and their relationship to human health and well-being. The Nutrition Science option is a part of an academic program that leads to a Bachelor of Science degree. With this preparation, professionals in nutrition conduct research and provide education and/or counseling to a variety of audiences in many different settings, including medical centers and hospitals, extended care facilities, schools, and public health agencies. Graduates may also work with pharmaceutical companies or may elect to pursue graduate study in nutrition.



What do we suggest?

We encourage students to explore all alternatives before selecting their academic major. However, we believe that the Nutrition Science option is the best choice!

Major in Nutrition – Dietetics Option

The Nutrition/Dietetics option is designed to prepare students interested in completing the requirements to become credentialed as a **Registered Dietitian Nutritionist (RDN)**. This option prepares students for careers in clinical nutrition, community nutrition, public health, nutrition education and counseling, foodservice management, and food and nutrition in industry. Graduates who successfully complete the Didactic Program in Dietetics are qualified to apply for a post-baccalaureate supervised-practice program, which is a requirement for eligibility to take the National Registration Examination for Dietitians and earn the RD/RDN credential. Auburn University's Didactic Program in Dietetics is accredited by the Accreditation Council for Education in Nutrition and Dietetics, 120 South Riverside Plaza, Suite 2000, Chicago, IL 60606-6995, (312) 899-0040 ext. 5400. [Http://www.eatright.org/ACEND](http://www.eatright.org/ACEND).

Auburn University's B.S. in Nutrition (Dietetics Option) consists of a 2-year pre-professional component and the 2-year professional Didactic Program in Dietetics (DPD). The pre-professional program in Nutrition/Dietetics is required for students seeking admission to the DPD. The first two years of coursework are designed to provide the student with a strong foundation in the basic sciences and an introduction to nutrition. Freshman and on- and off- campus transfer students who desire to major in Nutrition/Dietetics will be admitted to Pre-dietetics (NTDX). Students apply to the 2-year Professional Didactic Program in Dietetics typically the second semester of the sophomore year. Complete information about admission requirements and the application process can be found at <http://www.humsci.auburn.edu/dietetics/admissions.php>.



Steps to Becoming a Registered Dietitian Nutritionist (RD/RDN)

To become a Registered Dietitian Nutritionist (RD/RDN), students are required to take prescribed coursework in an accredited Didactic Program in Dietetics or Coordinated Program in Dietetics; to complete a minimum of 1200 hours of supervised practice experience; and pass the national Examination for Registered Dietitians.

Supervised Practice Programs (Dietetic Internships and Coordinated Masters Programs)

Supervised practice programs, primary as dietetic internships, are available throughout the United States. Average length is approximately 10 months but varies from 9 to 36 months; many are combined with an M.S. degree or offer some graduate credit. Coordinated Masters Programs integrate the didactic training with the supervised field experience. A few programs offer distance options, enabling location-bound interns to complete their rotations using facilities and preceptors in various locations. Students typically apply for supervised practice experiences during

the senior year. Auburn University's DPD Director actively assists AU students and graduates in the application process. The University of Alabama in Birmingham, Vanderbilt University Medical Center, Georgia State University, the University of Houston and some VA hospitals are examples of available supervised practice programs. Distance programs are available through the University of Northern Colorado, Oakwood University (Huntsville, AL), Utah State University, Iowa State University and others. Supervised practice programs are competitive and students are well advised to take their studies seriously and strive for a 3.5 GPA particularly in the junior and senior years.

Nutrition/Dietetics (continued)

Registration Examination for Dietitians

Following successful completion of both the undergraduate degree and the experience component, students are eligible to take the Registration Examination for Dietitians.

The exam is administered by computer and available year round. Eligibility to take the examination is established through the Commission on Dietetic Registration (<https://www.cdrnet.org/>).

Transfer Students

Students who plan to transfer to Auburn University's dietetics program may take courses through other universities or community colleges. However, all transfer courses are evaluated for equivalency with the corresponding AU course and are subject to disapproval. Therefore, it is strongly recommended that students contact Auburn for guidance in selecting courses that will transfer into the dietetics curriculum. Individuals who can provide this guidance are:

- Ms. Katie Lackey, 266 Spidle Hall, Auburn, AL 36849-5605 334/844-4790 lackekm@auburn.edu
- Ms. Kim Parker, 266 Spidle Hall, Auburn, AL 36849-5605 334/844-4790 parkeka@auburn.edu
- Dr. Patricia Marincic, 101-E Poultry Science Building, Auburn, AL 36849 334/844-3271 pzm0015@auburn.edu

Typically, courses in chemistry (general and organic), history, English, biology, anatomy & physiology (2 courses), math (pre-cal with trig), basic statistics, psychology, ethics and basic nutrition may be transferred from community colleges *provided that the courses meet Auburn and NDHM requirements and students earn a grade of C or better*. For students planning to transfer from a four-year

college, nutritional biochemistry and microbiology could be transferred *provided these meet Auburn and NDHM requirements and students make a grade of C or better*.

Reminder: Students who plan to transfer to Auburn's dietetics program should make an appointment to discuss plans with one of the above-listed contacts as soon as possible.

¹Auburn University's Didactic Program in Dietetics is accredited by the Accreditation Council for Education in Nutrition and Dietetics (ACEND) of the Academy of Nutrition and Dietetics, 120 South Riverside Plaza, Suite 2000, Chicago, IL 60606-6995, (312)-899-0040, ext. 5400. You can also visit www.eatright.org/acend.

Nutrition/Dietetics Application Information

Academic Standards and Policies:

Freshmen and on and off campus transfer students who desire to major in Nutrition/Dietetics will be admitted to Pre-dietetics (NTDX).

The pre-dietetics curriculum provides a strong foundation in nutrition and supporting sciences to prepare students to enter the professional component of the program.

To be eligible for consideration for admission to the didactic program in dietetics, applicants must successfully complete at least 45 semester hours of the pre- dietetics curriculum courses, including:

- **NTRI 2000/2003/2007 Nutrition and Health**
- and 4 of the following 6 science courses:**
- **CHEM 1030/1031 Fundamentals of Chemistry I**
 - **CHEM 1040/1041 Fundamentals of Chemistry II**
 - **CHEM 2030 Survey of Organic Chemistry**
 - **BIOL 1020/1021 Principles of Biology**
 - **BIOL 2500 Anatomy and Physiology I**
 - **BIOL 2510 Anatomy and Physiology II**

Students must successfully complete the lower-division pre-dietetics prerequisite courses as outlined below with a minimum GPA of 2.8 on a 4.0 scale. No grade lower than a “C” will be accepted in any prerequisite course (BIOL 1020/1021, BIOL 2500, BIOL 2510, CADS 2000, CHEM 1030/1031, CHEM 1040/1041, CHEM 2030, HDFS 2000, NTRI 2000 (2003 or 2007), NTRI 2070, PSYC 2010.)

Criteria for admission include pre-dietetics cumulative GPA, science GPA, and student’s personal statements and career goals.

Due to the limited number of seats, achievement of minimum standards does not ensure admission into the Didactic Program in Dietetics.

Program Application:

Pre-dietetic students must formally apply to the DPD typically during the second semester of the sophomore year. Application materials will be posted to the nutrition/dietetics website. Students will be notified of admission decisions in writing. Students accepted to the DPD must pre-register for the appropriate courses for the upcoming fall semester.

Source: <https://bulletin.auburn.edu>

Please refer to the Auburn University Bulletin for the most up-to-date information.

(http://bulletin.auburn.edu/undergraduate/collegeofhumansciences/departments/nutritiondieteticsandhospitalitymanagement/nutritiondieteticsoption_major/)

Frequently Asked Questions About Careers in Dietetics

The Department of Nutrition, Dietetics and Hospitality Management at Auburn University offers a Didactic Program in Dietetics (DPD) that leads to the Bachelor of Science in Nutrition. This program of study provides the didactic or academic requirements to become a dietitian. However, **after completing the bachelor's degree**, students must complete a Supervised Practice Experience (Dietetic Internship). After successfully completing the internship, students may sit for the Registration Examination for Dietitians. Graduates passing the exam are credentialed as a Registered Dietitian Nutritionist (RD/RDN).

Tell Me More About the Dietetic Internship (Supervised Practice Experience).

The Dietetic Internship (DI) is completed after graduation from the undergraduate program in Nutrition/Dietetics. In order to complete all requirements to become a Registered Dietitian students must apply to accredited supervised practice programs (e.g., a dietetic internship or coordinated master degree program) sponsored by hospitals, health departments, foodservice management companies, school districts, and universities. The dietetic internship or other supervised practice requires a minimum of 1200 hours of field experience. These programs average 10 months, but range in length from about 9-24 months, depending on the type of program (e.g., part-time or full-time). Several internships offer graduate credit or are offered in conjunction with a Master's degree. Individuals completing supervised practice satisfactorily, as verified by the program director, are eligible to take the Registration Examination for Dietitians.

Is it difficult to be accepted for a Dietetic Internship? Are the internships competitive?

Appointments to most dietetic internships are awarded on a nationally competitive basis through a computer matching process. Through websites or upon request, internship programs will provide more detailed information on program requirements, fees, tuition, and financial aid. At Auburn, the DPD Director and nutrition faculty actively assist students in preparing internship applications. The national average for internship placement is approximately 50%; Auburn's average the past two years has been

considerably better at >90%.

How many accredited internship sites are there?

There are approximately 250 accredited dietetic internships. Recent Auburn graduates have been accepted at a variety of locations, including the University of Alabama at Birmingham, Oakwood University, Emory, Vanderbilt University Medical Center, Medical University of South Carolina, University of Houston, Oregon Health Sciences Center, the University of Minnesota, and Veterans Affairs hospitals in Memphis and Houston. Several "distance" internships are available that enable a prospective intern to plan his/her own program away from the main site, but under its direction.

How can students plan toward being competitive for an internship?

Grades and cumulative GPAs are very important from the first semester of the freshman year. Strive to earn A's and B's. Do not overload yourself with classes, work, or extracurricular activities until you settle in and establish good study habits. Then do get involved in student activities and leadership opportunities. Get to know your nutrition professors. These professors can be helpful in writing internship recommendation letters for your internship application during your senior year. Use breaks and vacation periods to gain volunteer or paid experience in a healthcare (preferably hospital) setting.

Are dietetic interns paid while completing their internships?

Most dietetic internships charge a fee or tuition. Some may offer financial aid opportunities. A few dietetic internships offer salary or stipends and some are part-time, enabling interns to hold a job. All dietetic internships must disclose estimated costs in their application materials. Students applying to internships should carefully review this information.

What happens if you don't match for an internship?

Students who do not match for an internship can reapply in subsequent years or seek an Individualized Supervised Practice Pathway (ISPP). Other options include graduate or professional school, taking the the national registration



Frequently Asked Questions (continued)

exam to become a Dietetic Technician Registered (DTR), and employment in positions that do not require the RD credential.

What are the potential career paths for Registered Dietitian Nutritionists?

Registered Dietitian Nutritionists work in a wide variety of employment settings, including health care, business and industry, public health, education, research, and private practice. Many work environments, particularly those in medical and health care settings, require that an individual be credentialed as a Registered Dietitian Nutritionist (RD/RDN). In many states, including Alabama, Registered Dietitian Nutritionists must also be licensed.

universities, and hospitals, directing or conducting research to answer critical nutrition questions that lead to recommendations for the maintenance of health and prevention and treatment of disease.

What can I do to determine if I really want to become a dietitian?

Early in your college program, participate in volunteer or “shadow” experiences with a Registered Dietitian Nutritionist in your home town. This could be in a clinical, community, or food service setting. Gaining insight into what dietitians do in their daily routine can be helpful in clarifying your goals. Camp Seale Harris, a summer camp for Alabama’s children with diabetes, is held each June and always welcomes volunteers. Join the Student Dietetic Association. Pay careful attention to all information presented in NTRI 2070: Careers in Nutrition, Dietetics, and Wellness.

Registered Dietitian Nutritionists work in:

- **Hospitals, and other health care facilities**, educating patients about nutrition and administering medical nutrition therapy as part of the health care team. They may also manage the foodservice operations in these settings overseeing everything from food purchasing and preparation to managing staff and budgets.
- **School districts, colleges and universities, retirement centers**, managing food service programs for students, residents and others.
- **Sports nutrition and corporate wellness programs**, educating clients about the connection between food, fitness, physical performance and health.
- **Food and nutrition-related businesses and industries**, working in communications, consumer affairs, public relations, sales, marketing, and product development.
- **Private practice**, working with individual or corporate clients, or in their own business. Registered Dietitians may provide services to restaurants, supermarkets, food vendors and distributors, athletes, nursing homes, daycare centers and individuals.
- **Community and public health settings** teaching, collaborating on health policy, monitoring and advising the public, and helping to improve quality of life through promotion of healthy eating.
- **Universities and medical centers**, teaching physicians, nurses, dietetics students, and others about the relationship of food and nutrition to health.
- **Research areas** in food and pharmaceutical companies,

Key Points to Remember!

Grades are important from your very first course. The supervised practice/dietetic internship is completed after graduation with the Bachelor’s degree, in a location away from Auburn. Acceptance into a dietetic internship is at the national level and is a highly competitive process.



Tentative Semester Course Offerings

DEPARTMENT OF NUTRITION, DIETETICS, AND HOSPITALITY MANAGEMENT FALL 2016/SPRING 2017/SUMMER 2017

Undergraduate Courses - NTRI		Fall	Spring	Summer*
2000/2003	Nutrition and Health. Credit will not be given for both NTRI 2000, NTRI 2003 and NTRI 2007.	X	X	X
2007	Honors Nutrition and Health. Pr. Honors College.		X	
2010	Basic Sports Nutrition, Pr. (BIOL 1020 or BIOL 1027) or (NTRI 2000/2003/2007).	X		X
2070	Careers in Nutrition, Dietetics, and Wellness, Pr., NTRI 2000/2003/2007 or departmental approval		X	
3560	Experimental Study of Foods, Pr., NTRI 2000/2003/2007, CHEM 1030 and BIOL 1020	X		
3750	Nutrition Education, Pr. PSYC 2010, NTRI 2000/2003/2007 or departmental approval.		X	
3940	Community Service. Departmental approval.	X	X	X
4090	Professional Issues in Dietetics and Nutrition, Pr., NTRI 2070, NTDI or departmental approval. Junior standing.	X		
4560	Food Systems Operations, Pr., NTRI 2050 or NTRI 3560 or Departmental approval.	X		
4561	Food Systems Operations Laboratory, Pr., NTRI 2050 or NTRI 3560 or Departmental approval. Coreq. NTRI 4560. TB Test.	X		
4620	Public Health Nutrition, Pr., STAT 2510; Coreq. NTRI 5820	X		
4820	Macronutrients, Pr. (NTRI 2000 or NTRI 2007 or NUFS 2000 or NUFS 2007) and P/C BCHE 3180 and BIOL 2510 or Departmental approval.		X	
4830	Vitamins and Minerals, Pr. (NTRI 2000 or NTRI 2007) and P/C BCHE 3180.		X	
4930	Directed Studies, Pr., departmental approval	X	X	X
4997	Honors Thesis, Pr., membership in the Honors College, departmental approval	X	X	X
5020/6020	Medical Nutrition I, Pr. NTRI 4820 and NTRI 4830. Coreq. NTRI 4090. NTDI or departmental approval.	X		
5030/6030	Medical Nutrition II, Pr., NTRI 5020/6020. NTDI or departmental approval.		X	
5100	Nutrition in Disease Prevention. Pr. NTRI 4820 and 4830.		X	
5560	Nutrition and Food Service Management. Pr. (P/C NTRI 4560 or P/C NTRI 4561) or Departmental approval.		X	
5620/6620	Sports Nutrition. Pr. BIOL 2510 and BCHE 3180. Departmental approval.			X
5760	Nutrition Counseling. Pr. NTRI 3750. Coreq. NTRI 5030/ NTRI 6030. NTDI or departmental approval.		X	
5820/6820	Nutrition in the Life Cycle, Pr., NTRI 4830. Departmental approval.	X		
5830	Nutritional Genomics, Pr. NTRI 4820 and NTRI 4830.		X	
5910	Clinical Practicum in Dietetics. Coreq. NTRI 5020 and NTRI 5030. NTDI or department approval.		X	

* Offered in summer only if funding is available and adequate enrollment is obtained.

** Offered every other year.

Note: Tentative Schedule-Course offerings are subject to resource availability and minimum class enrollments. Please check semester schedule of courses available through Tigeri for course offering information each semester.

NDHM Faculty

NUTRITION, DIETETICS AND HOSPITALITY MANAGEMENT

328 Spidle Hall (334) 844-4261

101 Poultry Science Bldg. (334) 844-3261

Dr. Martin O'Neill, Professor and Department Head
328D Spidle Hall, (334) 844-3264, oneilm1@auburn.edu

NTRI FACULTY

OFFICE

PHONE

Dr. Onikia Brown onb0001@auburn.edu	356 Spidle Hall	844-3161
Dr. Donna Burnett	Poultry Science Bldg.	844-4261
Dr. Alisha Farris	Poultry Science Bldg.	844-4261
Dr. Michael Greene mwg0006@auburn.edu	101C Poultry Science Bldg.	844-8435
Dr. Kevin Huggins huggikw@auburn.edu	102D Poultry Science Bldg.	844-3296
Dr. Ramesh Jeganathan jeganrb@auburn.edu	101F Poultry Science Bldg.	844-3840
Dr. Patricia Marincic pzm0015@auburn.edu	101E Poultry Science Bldg.	844-3271
Dr. Doug White whitebd@auburn.edu	101D Poultry Science Bldg.	844-3266

HRMT FACULTY

OFFICE

PHONE

Dr. Baker Ayoun bma0002@auburn.edu	360 Spidle Hall	844-8196
Dr. Alecia Douglas acd0011@auburn.edu	358 Spidle Hall	844-1434
Dr. Yee Ming Lee yzl0085@auburn.edu	362 Spidle Hall	844-6453
Dr. David Martin martida@auburn.edu	328B Spidle Hall	844-3291
Dr. Imran Rahman izr0004@auburn.edu	328C Spidle Hall	844-4206

Career Pathways Map - Nutrition

PATHWAYS | NUTRITION

Bachelor of Science in Nutrition

- Nutrition/Dietetics
- Nutrition Science
- Wellness



COURSE SELECTION

FRESHMAN

- NTRI 2000 – Nutrition and Health
- CHEM 1030/1031; CHEM 1040/1041 and BIOL 1020/1021

SOPHOMORE

- BIOL 2500/2510 and Organic Chemistry
- Apply to the NTRI program (for NTDX)

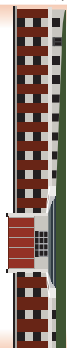
JUNIOR

- For students in the Nutrition Science Pre-Med route, you may consider these courses: SCMH 3890 Premedical preceptorship-PA
- SCMH 3810 Pre-PT practicum

SENIOR

ASK FOR ASSISTANCE

- Work hard to make competitive grades especially in sciences.
- Meet regularly with your academic advisor and consult them when you have concerns about admission to particular classes or need more information about class requirements



Spidle Hall, home of the College of Human Sciences student advising

- If interested in professional medical education meet with pre-health advisor in the College of Sciences and Mathematics.

- Academic Support provides several free resources to improve performance including Study Partners, Supplemental Instruction and academic coaching. (auburn.edu/academicsupport)
- Peer tutoring in the College of Human Sciences

- Meet with the Career Center to explore career and job opportunities to obtain experiences in the field

- Identify your reference letter writers early for graduate school or the job search and provide them with plenty of notice.
- Ask the Career Center for help in preparing your résumé and cover letter

GAIN EXPERIENCE

- Job shadowing is an essential part of increasing your competitiveness for entering into healthcare related fields and can provide insight into the area you wish to pursue.

- If you have not already done so, begin volunteering.
- Volunteering is an important piece of your nutrition dietetics and professional school applications.

- Continue to maintain your volunteer commitments.
- PPAC (Pre-Professional Advising Committee) is an opportunity for Auburn students to enhance their application packet for professional schools. Meetings will begin in the Fall of your junior year for student interested in pursuing professional education.

- Continue to maintain your volunteer commitments and continue to seek out additional opportunities to enhance your competitiveness.

GET INVOLVED

- Join the Student Dietetic Association (SDA)
- In the Spring apply for the College of Human Sciences Student Ambassador program
- Join Alpha Epsilon Delta (AED) which is an honorary society for students entering into the professional medical fields.



- Look to take on leadership roles within the organizations you joined freshman year
- Participating in undergraduate research is a great way to familiarize yourself with the field and identify research opportunities. Contact Nutrition faculty members to inquire about potential opportunities.

- Kappa Omicron Nu (KON) is a national honor society for the human sciences. If invited, join.

- In the Spring run for KON, SDA, or AED leadership positions
- Connect with AU alumni and stakeholders to enhance professional opportunities

CAREER PLANNING



Mary Martin Hall, home of the Auburn University Career Center

AUBURN UNIVERSITY CAREER CENTER

303 MARY MARTIN HALL | AUBURN.EDU/CAREER

The program is designed to provide students with the foundational coursework necessary to enter professional medical and paramedical post graduate programs. Entrance into the field often requires obtaining graduate education. Current students should look to take advantage of multiple experiential opportunities in and out of the classroom.

REGISTERED DIETITIAN

MINIMUM EDUCATION: B.S.

ENTRY LEVEL SALARY RANGE: \$27.6K - \$47.5K

These are just three options out of many that nutrition majors pursue. For more career options be sure to check out "What Can I Do With a Major In..." on auburn.edu/career.

PHYSICIAN

MINIMUM EDUCATION: M.D./D.O.

ENTRY LEVEL SALARY RANGE: \$106.3K - \$176.1K

PHARMACEUTICAL SALES REPRESENTATIVE

MINIMUM EDUCATION: B.S.

ENTRY LEVEL SALARY RANGE: \$29.5K - \$74.2K

College of Human Sciences | 210 Spidle Hall | 334.844.3790 | humsci.auburn.edu

Updated: May 26, 2016

THIS IS HUMAN SCIENCES.

CURRICULUM