

## Faculty

**Leonard Bell, PhD** [bellleo@auburn.edu](mailto:bellleo@auburn.edu)

Research: Food chemical stability testing; utilization of alternative sweeteners; water activity of food systems; caffeine in foods

**Robin Fellers, PhD, RD** [fellerb@auburn.edu](mailto:fellerb@auburn.edu)

Director of Nutrition/Dietetics Program  
Research/Outreach: Developing a viable foodservice operation at the Rural Heritage Center in west Alabama

**Tung-Shi Huang, PhD** [huangtu@auburn.edu](mailto:huangtu@auburn.edu)

Research: Food safety and the development of biosensors for food-borne pathogen detection, food microbiology

**Bob Keith, PhD** [keithre@auburn.edu](mailto:keithre@auburn.edu)

Extension - Service to provide media outlets with information concerning nutrition and health issues

**Doug White, PhD** [whitebd@auburn.edu](mailto:whitebd@auburn.edu)

Research: Leptin and hepatic gluconeogenesis as related to diabetes

**Margaret Craig-Schmidt, PhD** [craigmc@auburn.edu](mailto:craigmc@auburn.edu)

Research: Lipid nutrition, role of omega-3 fatty acids and health

**Sareen Gropper, PhD, RD** [gropss@auburn.edu](mailto:gropss@auburn.edu)

Research: Human nutrition related to body weight regulation and medical/clinical nutrition

**Kevin Huggins, PhD** [huggikw@auburn.edu](mailto:huggikw@auburn.edu)

Research: Glycemic index and diabetes, lipid rafts and signal transduction

**Suresh Mathews, PhD** [mathest@auburn.edu](mailto:mathest@auburn.edu)

Research: Metabolic diseases, molecular mechanisms of insulin resistance, animal models of obesity and type 2 diabetes, functional foods

**Barb Struempier, PhD** [strueb@auburn.edu](mailto:strueb@auburn.edu)

Research: Principal Investigator of a \$4 million/year Extension grant to provide nutrition education to food stamp recipients

**Claire Zizza, PhD, RD** [zizzaca@auburn.edu](mailto:zizzaca@auburn.edu)

Research: Nutritional epidemiology, dietary behaviors, and consequences of obesity

## Application Process

### Admissions and application requirements:

- Application for Graduate Admission
- Application Fee (\$50 domestic, \$60 International)
- Two official transcripts from all colleges attended
- Scores on Graduate Record Exam (GRE) general test
- Scores on Test of English as a Foreign Language (TOEFL) for international students
- Letter of Intent
- Resume or CV
- Three Letters of Recommendation

### Submit your application electronically at:

[https://fp.auburn.edu/gradschl/public\\_html/GWAAP3](https://fp.auburn.edu/gradschl/public_html/GWAAP3)

### Application materials should be sent by mail to:

Dr. Sareen Gropper  
Graduate Program Officer  
Auburn University  
Department of Nutrition and Food Science  
102C Poultry Science Building  
Auburn, AL 36849-5605  
[gropss@auburn.edu](mailto:gropss@auburn.edu)

Learn more information about NUFS faculty, courses, programs and facilities at:  
[www.humsci.auburn.edu/nufs](http://www.humsci.auburn.edu/nufs)



Science for a Quality Life

**AUBURN**  
UNIVERSITY

[www.humsci.auburn.edu](http://www.humsci.auburn.edu)

Auburn University is an equal opportunity educational institution/employer.  
Produced by the Office of Communications and Marketing, December 2008.



Auburn University is among a distinctive group of universities designated as Land, Sea, and Space Grant institutions and has provided instruction, research and outreach to benefit the state and nation for more than 150 years. Auburn has been ranked in the top 50 of public institutions for the past 16 years by *U.S. News & World Report*, is among the top 15 percent of colleges ranked by the *Princeton Review*, and has academic programs that score high in national surveys. As we grow and change, the university continuously adapts to accommodate today's needs, while respecting the traditions and spirit of Auburn. Auburn has more than 250,000 graduates and provides 130 degree programs to more than 24,000 graduate and undergraduate students.

# Nutrition and Food Science

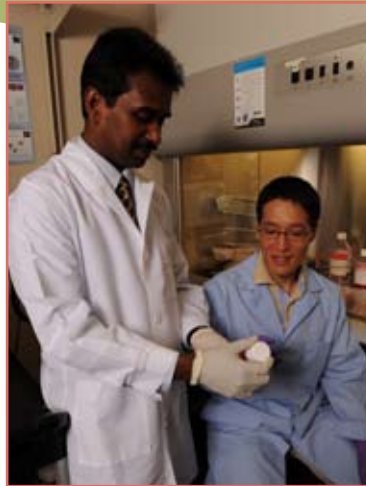
GRADUATE PROGRAMS



**AUBURN UNIVERSITY**  
COLLEGE OF HUMAN SCIENCES

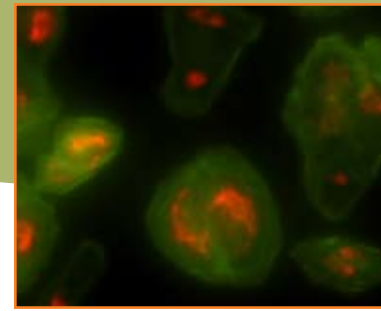
## Program Overview

The Department of Nutrition and Food Science at Auburn University offers graduate study leading to the master of science and the doctor of philosophy degrees. Degree emphases are in the areas of nutrition and food science. The combination of these respective areas within a single department facilitates integrative studies addressing normal and clinical nutrition, food and health issues, food safety and technology, as well as food service. The department emphasizes the integration of knowledge from various fields for the purpose of understanding and developing professional skills for careers in research and higher education, as well as the food and healthcare industries.



## Faculty Expertise

Nutrition and food science are, by their nature, interdisciplinary. Faculty in the department have expertise in the areas of nutritional genomics, nutritional physiology, cellular and molecular nutrition, nutritional biochemistry, nutritional epidemiology, lipid nutrition, food safety and microbiology, and food chemistry. While a variety of research topics are available, the department's strength in nutritional studies is related to diabetes and obesity, and in the area of food safety and food chemistry.



## Master of Science

The master of science (MS) degree programs provide advanced study in the area of nutrition or food science beyond the bachelor's level, along with an introduction to research and its methods.

### Requirements

#### **Thesis Option: 30 hours**

Requires research and thesis, and successful defense of thesis

#### **Non-thesis Option: 33 hours**

Requires completion of a scholarly research project/paper in lieu of the thesis and the successful passage of a comprehensive examination covering the material taught in the courses that the student has taken. (The non-thesis option is ideal for registered dietitians or food scientists who would like more advanced study to further their careers, but who will not require advanced knowledge of research.)

## Doctor of Philosophy

The doctor of philosophy (PhD) degree program provides a high level of advanced study in the area of nutrition or food science with in-depth research at the cutting edge of knowledge in the area of study. PhD programs are individually planned to enable students to fulfill specific career objectives.

### Requirements

#### **60 hours beyond the bachelor of science degree**

Research and dissertation describing original research in the student's area of emphasis and successful defense of dissertation.

## Opportunities for Financial Support

Graduate research assistantships and graduate teaching assistantships are available to highly qualified applicants. Assistantships are accompanied by a full-tuition waiver both for in-state and out-of-state students. Several competitive graduate student research fellowships are also available yearly through the department.

## Associations with Other Auburn Research Programs and Centers

Faculty and graduate students within the department are associated with the Boshell Diabetes and Metabolic Diseases Research Program at Auburn University, the Auburn University Cellular and Molecular Bioscience Program, and the Auburn University Detection and Food Safety Center. In addition to well-equipped laboratories within the department, students have access to several core laboratories on campus, including the Genetic Analysis Laboratory, the Advanced Microscopy and Imaging Laboratory, the Flow Cytometry Core Laboratory, the Hybridoma Facility, and the Co<sup>60</sup> Radiation Facility. Two AAALAC-accredited animal facilities are also available for use.

## Representative Positions of Recent Graduates

### **Nutrition**

Bionutrition Manager  
Clinical Dietitian  
Critical Care Dietitian  
Government Administrator  
Nutritional Consultant  
Physician's Assistant  
Public Health Dietitian  
Research Associate  
Research Dietitian  
Statistician  
University Faculty Member  
Veterinarian

### **Food Science**

Assistant Plant Manager  
Associate Manager of  
Product Development  
Associate Product  
Development Scientist  
HACCP Supervisor  
QA Manager  
Quality Control Supervisor  
Research Chemist

