

PITCH CANKER – PROLINE GREENHOUSE STUDY

Tom Starkey
Scott Enebak

•Southern Forest Nursery
Management Cooperative
Auburn University

Thanks to Barry, Marietjie,
Tommy & Paul

Study Details

- ▣ Longleaf seed from a family known to have had Pitch Canker in the past was used.
- ▣ To increase fungal pressure, a 8mm agar plug of *Fusarium circinatum* was added to ½ of the cavities at time of sowing
- ▣ Treatments:
 1. Fungal plug added, no Proline spray
 2. Fungal plug added , Proline spray
 3. No fungal plug added, no Proline spray
 4. No fungal plug added, Proline spray

Study Details

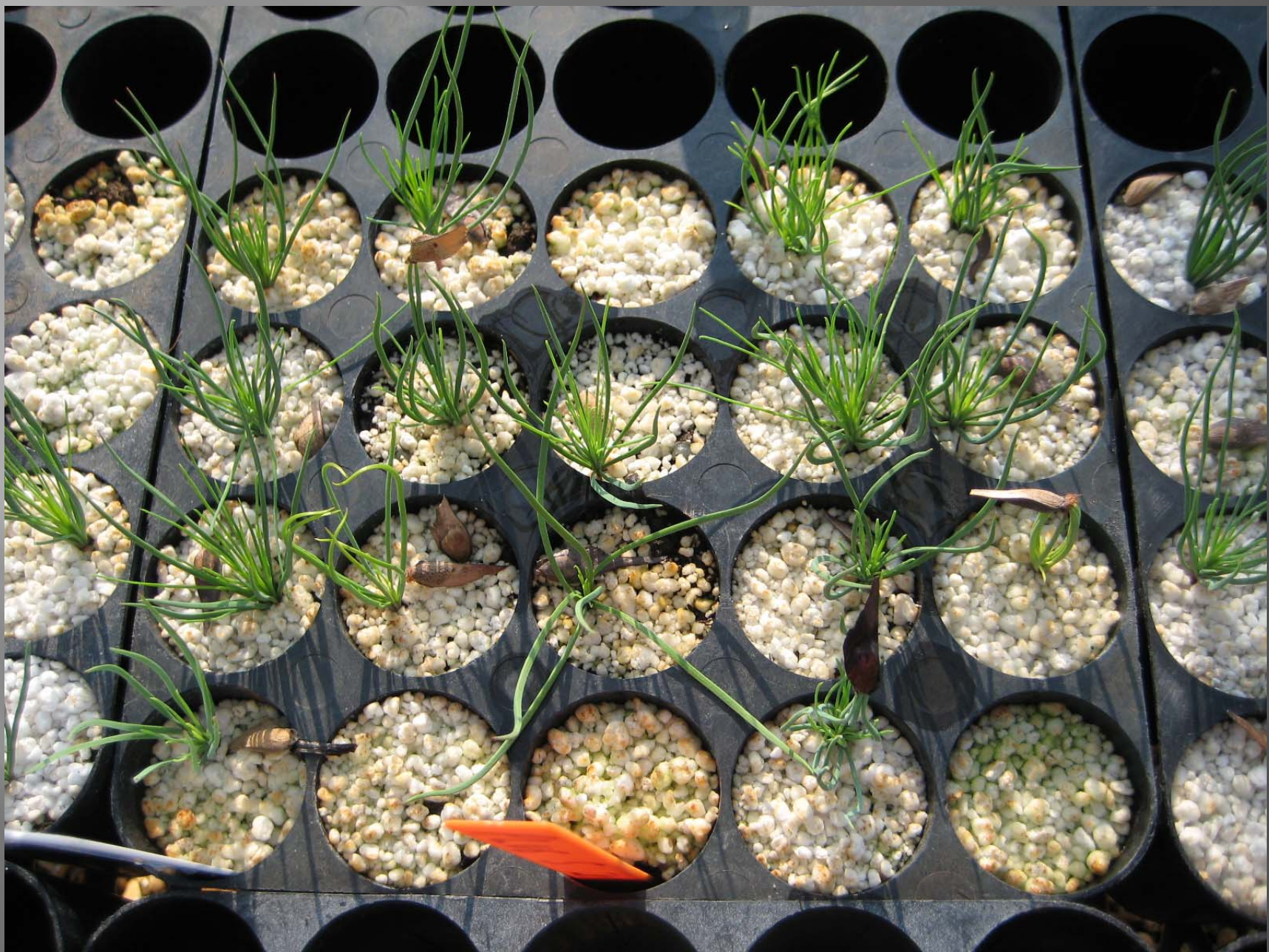
- ▣ 20 container sets each with 20 cavities / trt.
- ▣ Germination and mortality measured each week for 4 weeks and then 1x/month until Nov. 2008.
- ▣ Proline @ 5.5 fl oz/a sprayed every 2 weeks

Date	TRT	Cavity Fill
5-Jun-08	No Plug No Proline	0.66 AB
5-Jun-08	Plug No Proline	0.67 AB
5-Jun-08	No Plug + Proline	0.72 A
5-Jun-08	Plug + Proline	0.62 B
	<i>lsd</i>	<i>0.07</i>
12-Jun-08	No Plug No Proline	0.69 A
12-Jun-08	Plug No Proline	0.62 B
12-Jun-08	No Plug + Proline	0.75 A
12-Jun-08	Plug + Proline	0.70 A
	<i>lsd</i>	<i>0.07</i>
19-Jun-08	No Plug No Proline	0.68 B
19-Jun-08	Plug No Proline	0.60 C
19-Jun-08	No Plug + Proline	0.77 A
19-Jun-08	Plug + Proline	0.73 AB
	<i>lsd</i>	<i>0.07</i>
27-Jun-08	No Plug No Proline	0.68 B
27-Jun-08	Plug No Proline	0.60 C
27-Jun-08	No Plug + Proline	0.79 A
27-Jun-08	Plug + Proline	0.76 AB
	<i>lsd</i>	<i>0.07</i>



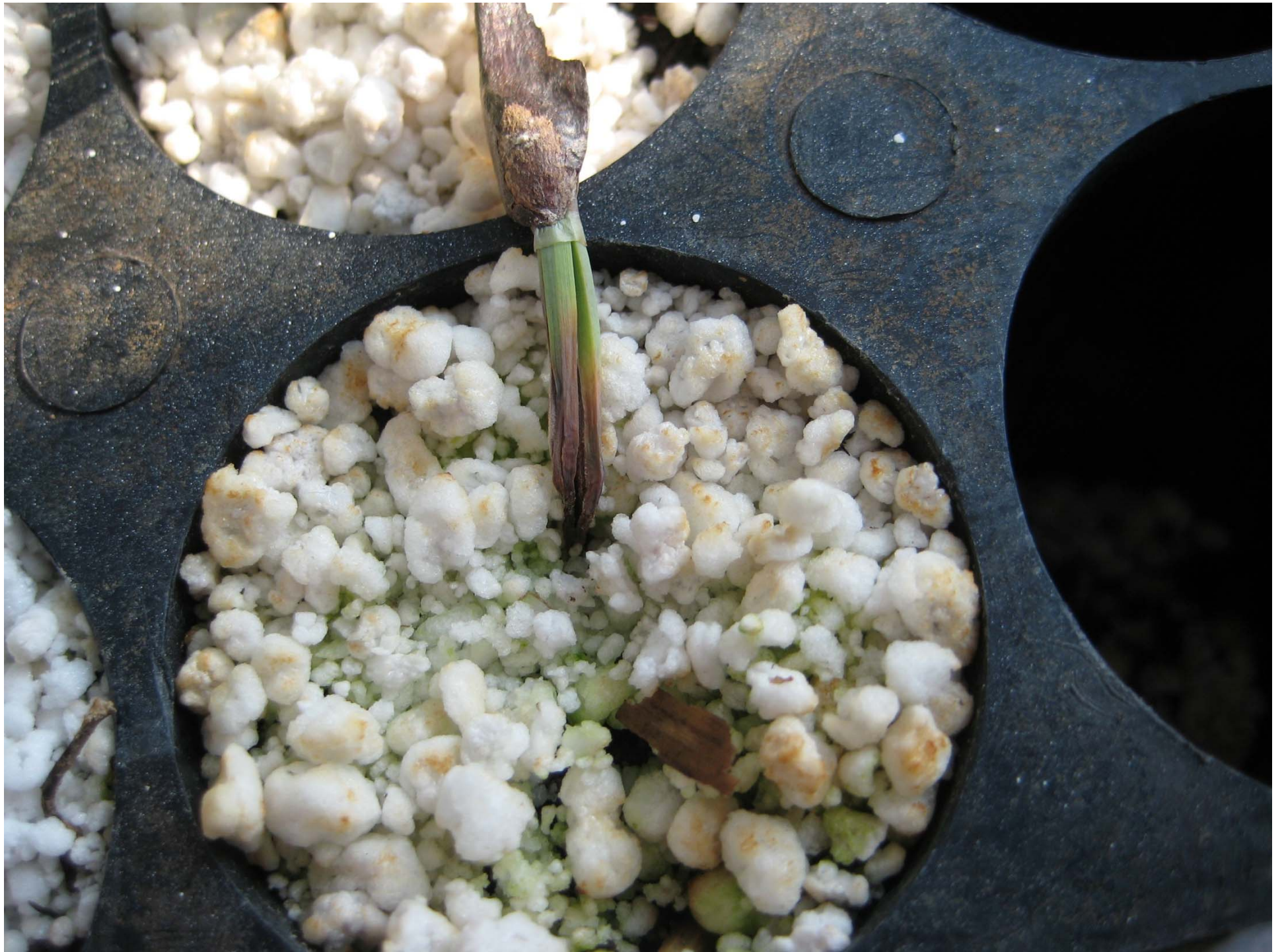






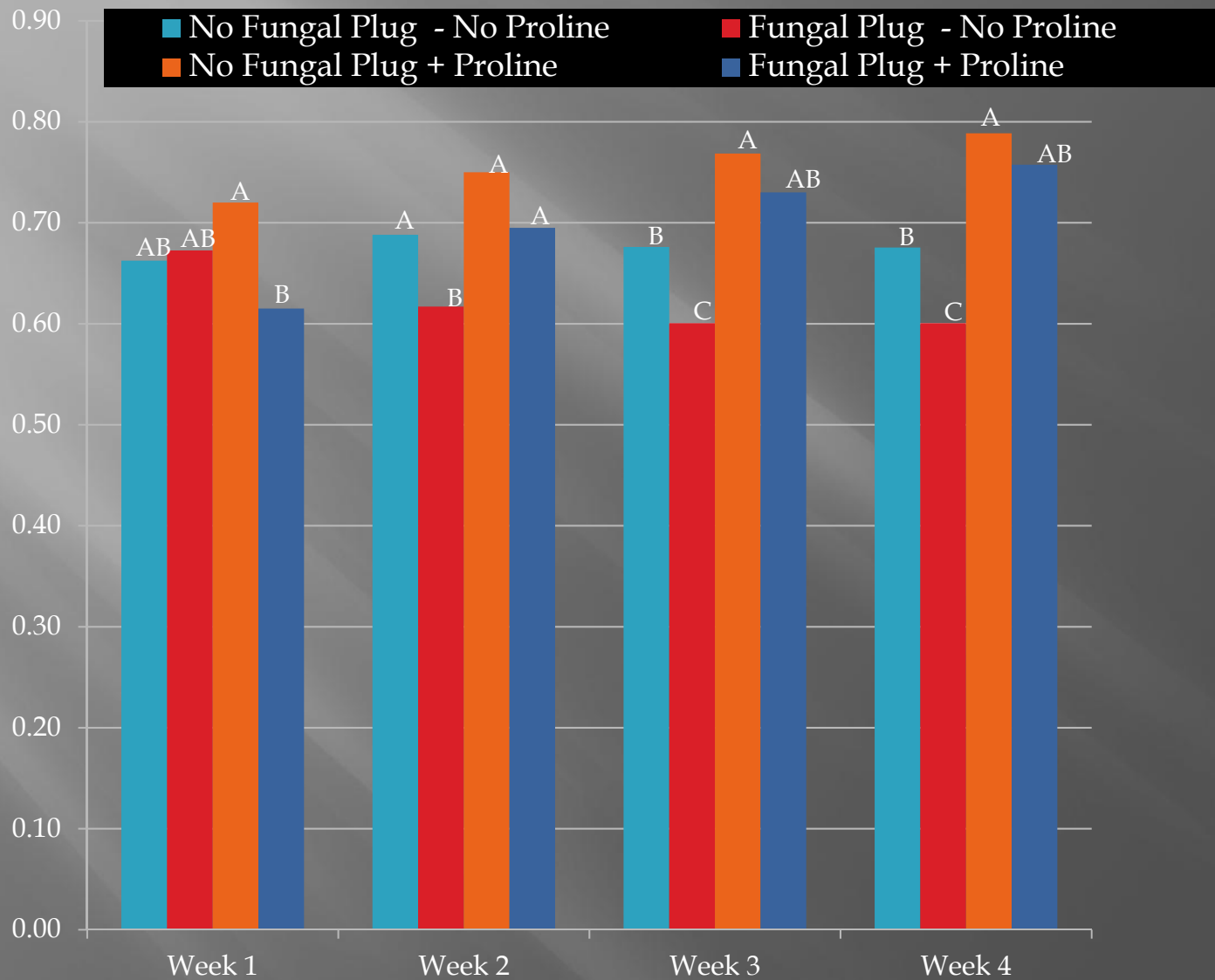








Pitch Canker – Proline GH Study



Future Outlook

- ▣ Optimistic that Proline can control Pitch Canker in LL seedlings.
- ▣ Proline is not phototoxic on LL, Lob, Slash



