

REGIONAL TRENDS IN SOUTHERN FOREST SEEDLING PLANTING & PRODUCTION

Scott Enebak - Professor & Director
Southern Forest Nursery Management Cooperative
Forest Health Dynamics Laboratory
Auburn University - SFWS



Southern Forest Tree Production & Planting Data Sources

1) USFS Annual Survey on Seedling Production

- USDA Report SA-MR 8 Sept 1980

2) Georgia Forestry Commission

- 1999 – 07 Annual Planting Survey

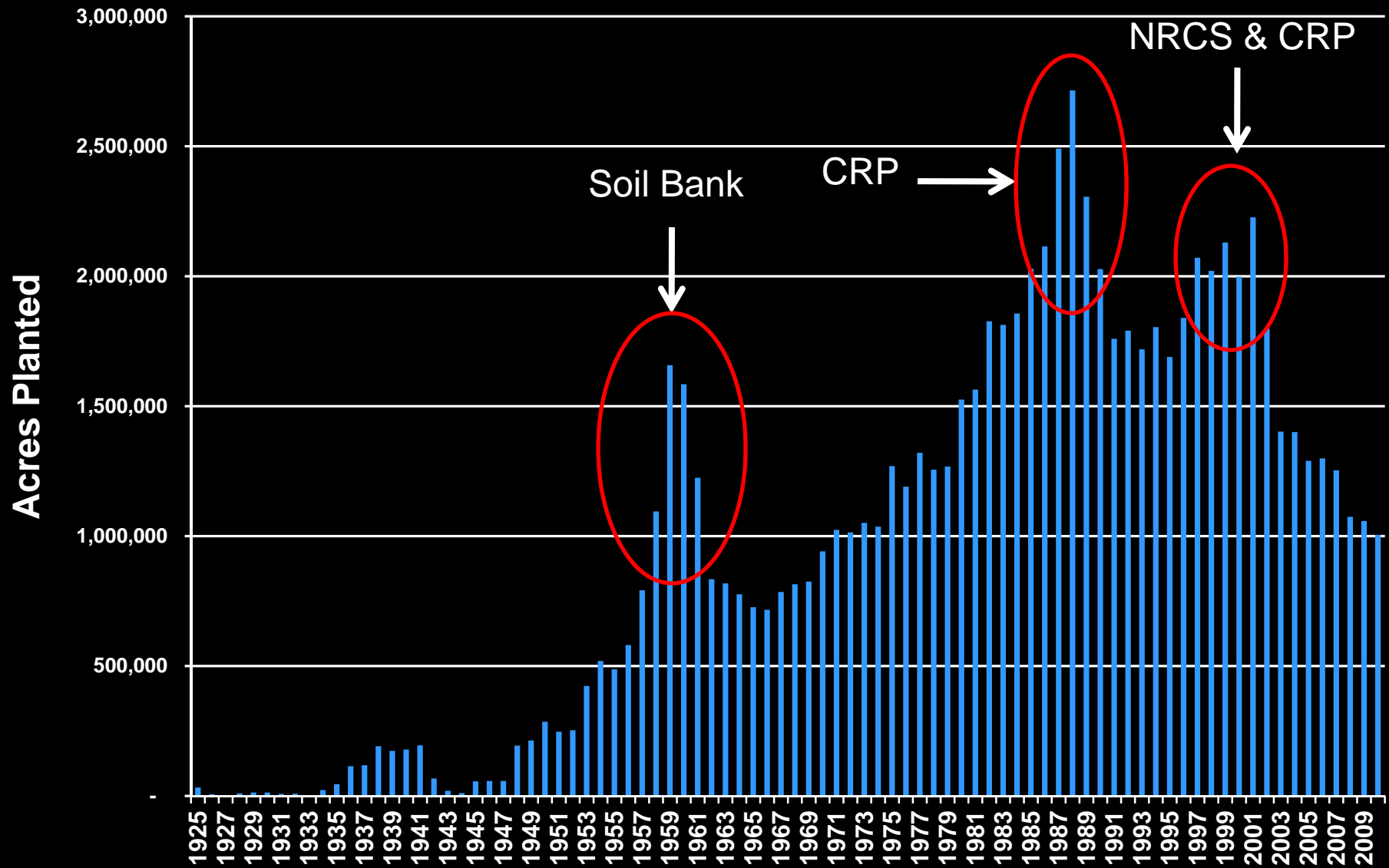
3) AU Nursery Cooperative

- 2002 - 09 Annual Seedling Production Survey

4) Longleaf Alliance

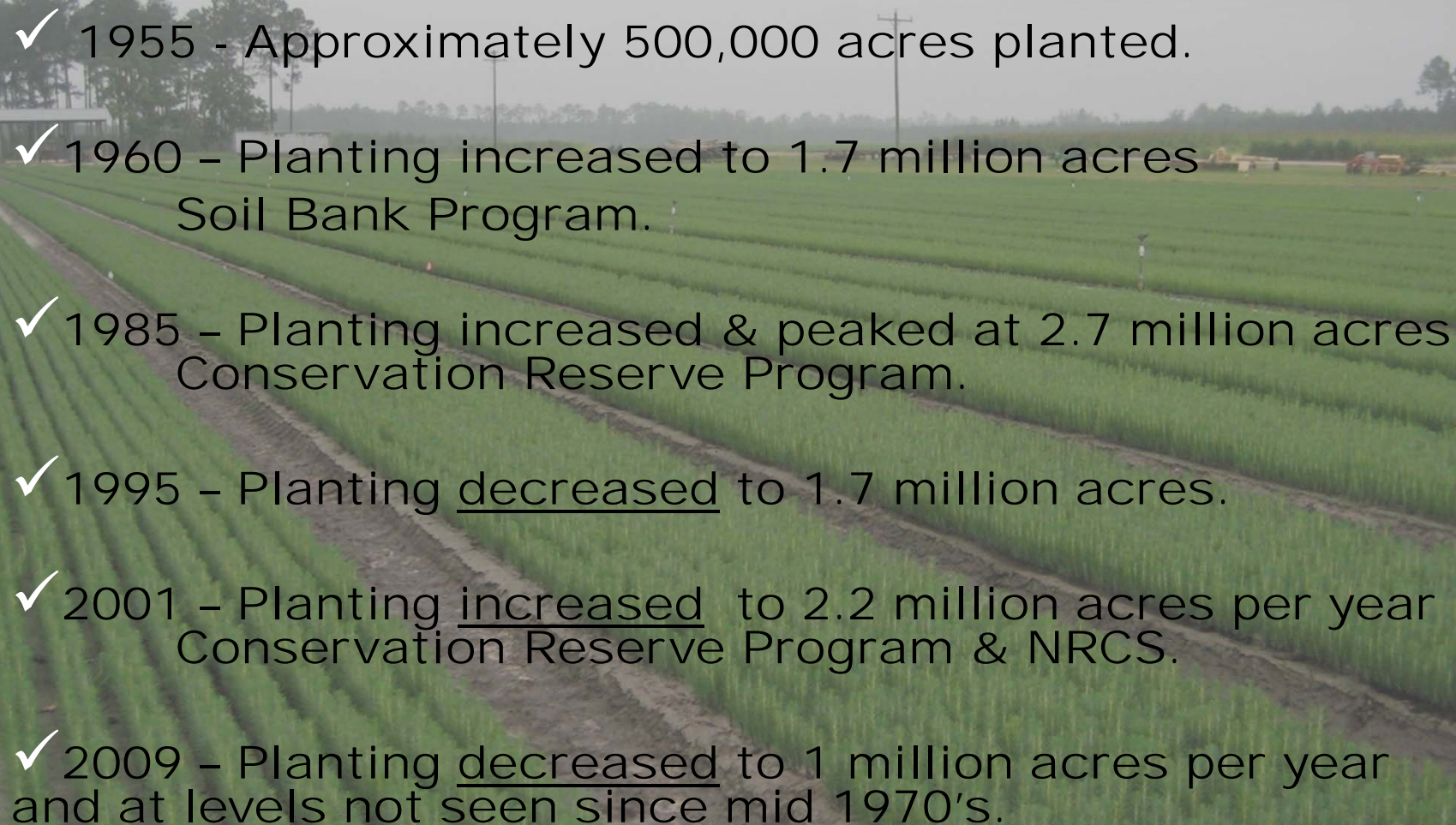
- 1996-09 Annual Longleaf Production Survey

Southern Seedling Planting all Owners & all States: 1925-2009



Data from USFS and GFC

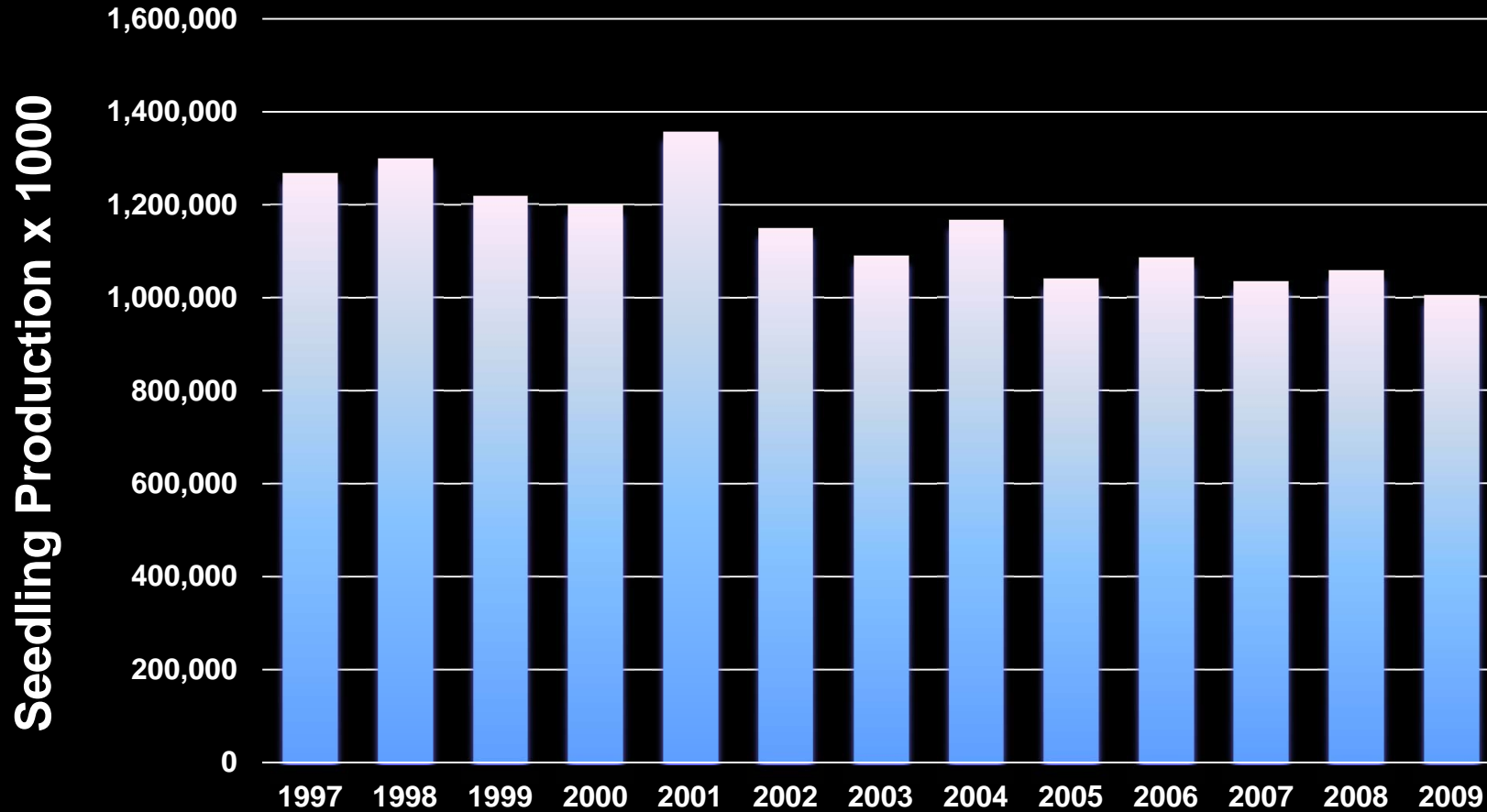
Planting Trends 1945 -2009

- 
- ✓ 1955 - Approximately 500,000 acres planted.
 - ✓ 1960 – Planting increased to 1.7 million acres Soil Bank Program.
 - ✓ 1985 – Planting increased & peaked at 2.7 million acres Conservation Reserve Program.
 - ✓ 1995 – Planting decreased to 1.7 million acres.
 - ✓ 2001 – Planting increased to 2.2 million acres per year Conservation Reserve Program & NRCS.
 - ✓ 2009 – Planting decreased to 1 million acres per year and at levels not seen since mid 1970's.

Seedling Production

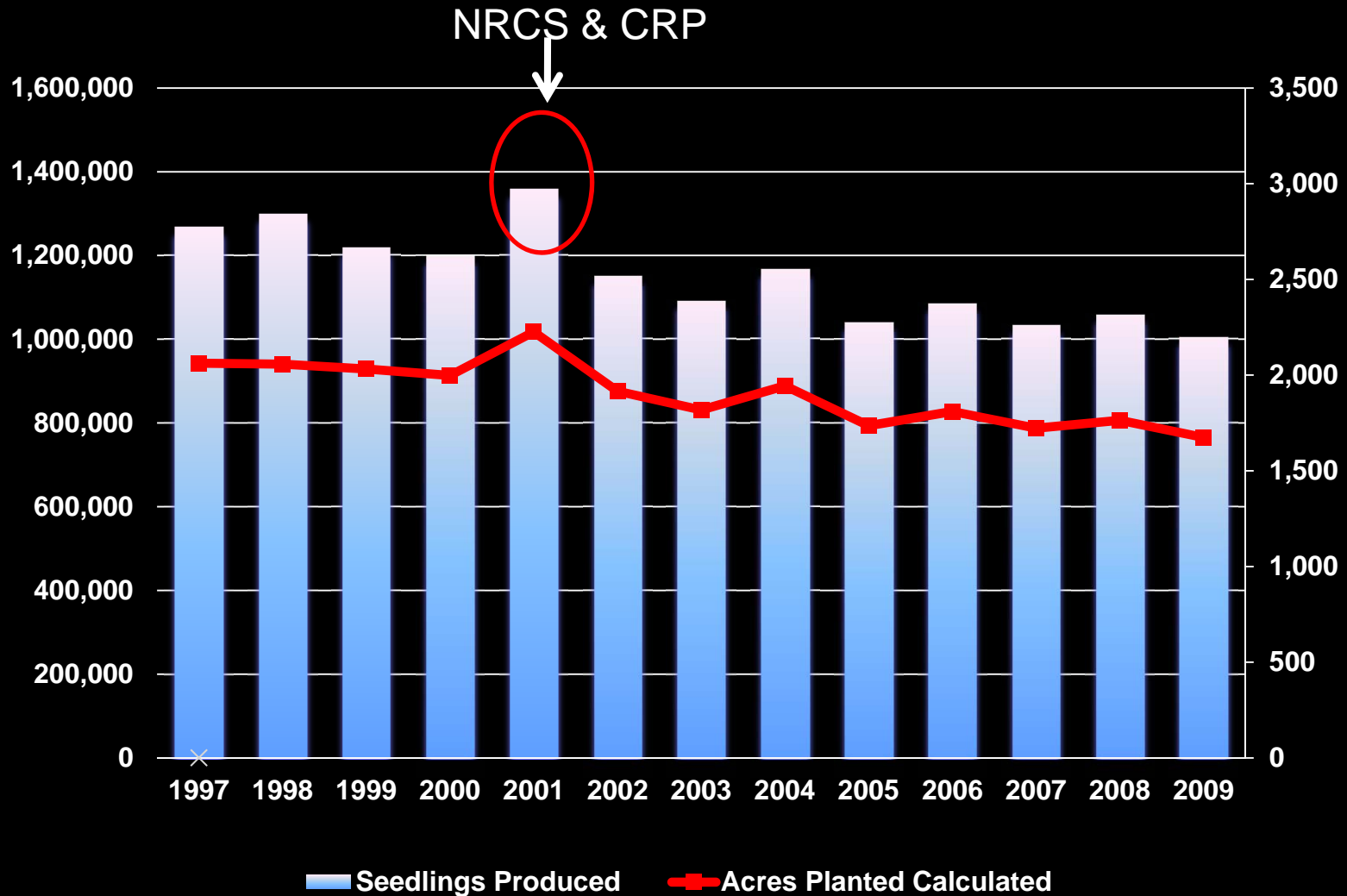
- ✓ In 2002, the Southern Forest Nursery Management Cooperative began a region-wide annual survey of Seedling Production.
- ✓ Two page questionnaire sent in June to all available nursery addresses (220+/-) in 12 southern states.
- ✓ Follow up telephone calls made to maximize participation and update addresses.
- ✓ Data from 50-60 nurseries annually.
- ✓ Compiled by State, Ownership, Species & Stock Type.

Seedling Production: 1997-2009



Data from USFS, GFC and Nursery Cooperative

Seedling Production & Planting: 1997-2009



Data from USFS, GFC and Nursery Cooperative

Total Seedling Production: 2008-09



	<u>Production</u>	<u>Change from Last Year</u>
Conifers	975,704,000	- 4%
Hardwoods	29,196,000	-25%
Total	1,004,900,000	- 5%

Data from Longleaf Alliance and Nursery Cooperative

Conifer Production: 2008-09

	<u>Production</u>	<u>Change from Last Year</u>
Bareroot	851,007,000	- 10 %
Container	124,697,000	+ 24 %
Total Conifer	975,704,000	

Data from Longleaf Alliance and Nursery Cooperative

Conifer Production: 2008-09

	<u>Production</u>	<u>Change from Last Year</u>
Loblolly	786,121,000	- 4 %
Slash	91,210,000	- 29 %
Longleaf	82,827,000	+ 11 %
Others*	13,982,000	- 20 %

- 94% of Loblolly is bareroot
- 95% of Slash pine is bareroot
- 88% of Longleaf is container

*Others include Baldcypress, Eastern red cedar, Fraser Fir, Shortleaf, Virginia, White and Sand Pines

Data from Longleaf Alliance and Nursery Cooperative

Conifer Production: 2008-09

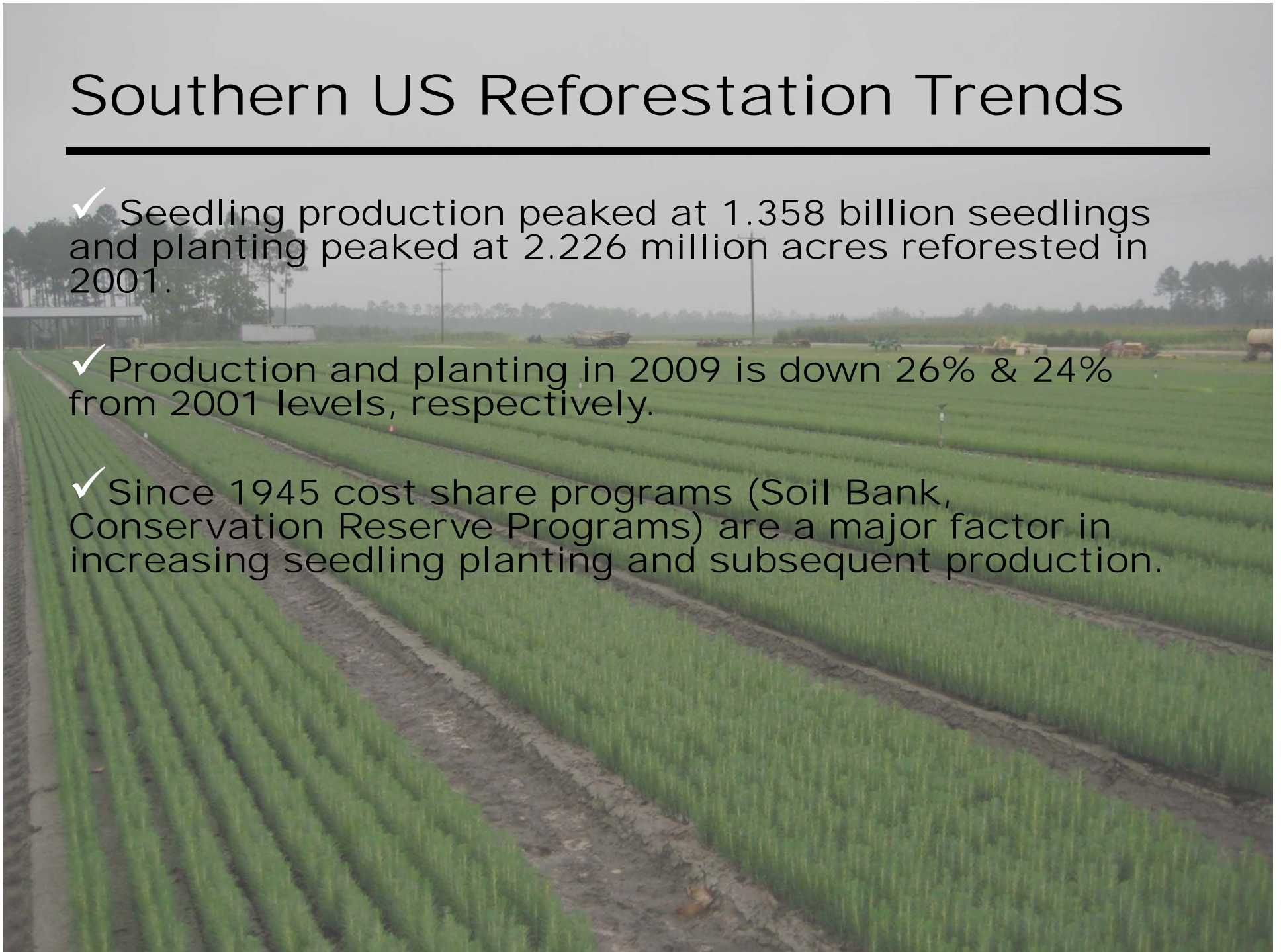
Percent of all conifer production

	<u>2006-07</u>	<u>2007-08</u>	<u>2008 - 09</u>
Loblolly	81%	80%	81%
Slash	13%	12%	9%
Longleaf	<u>5%</u>	<u>7%</u>	<u>8%</u>
	98%	99%	98%

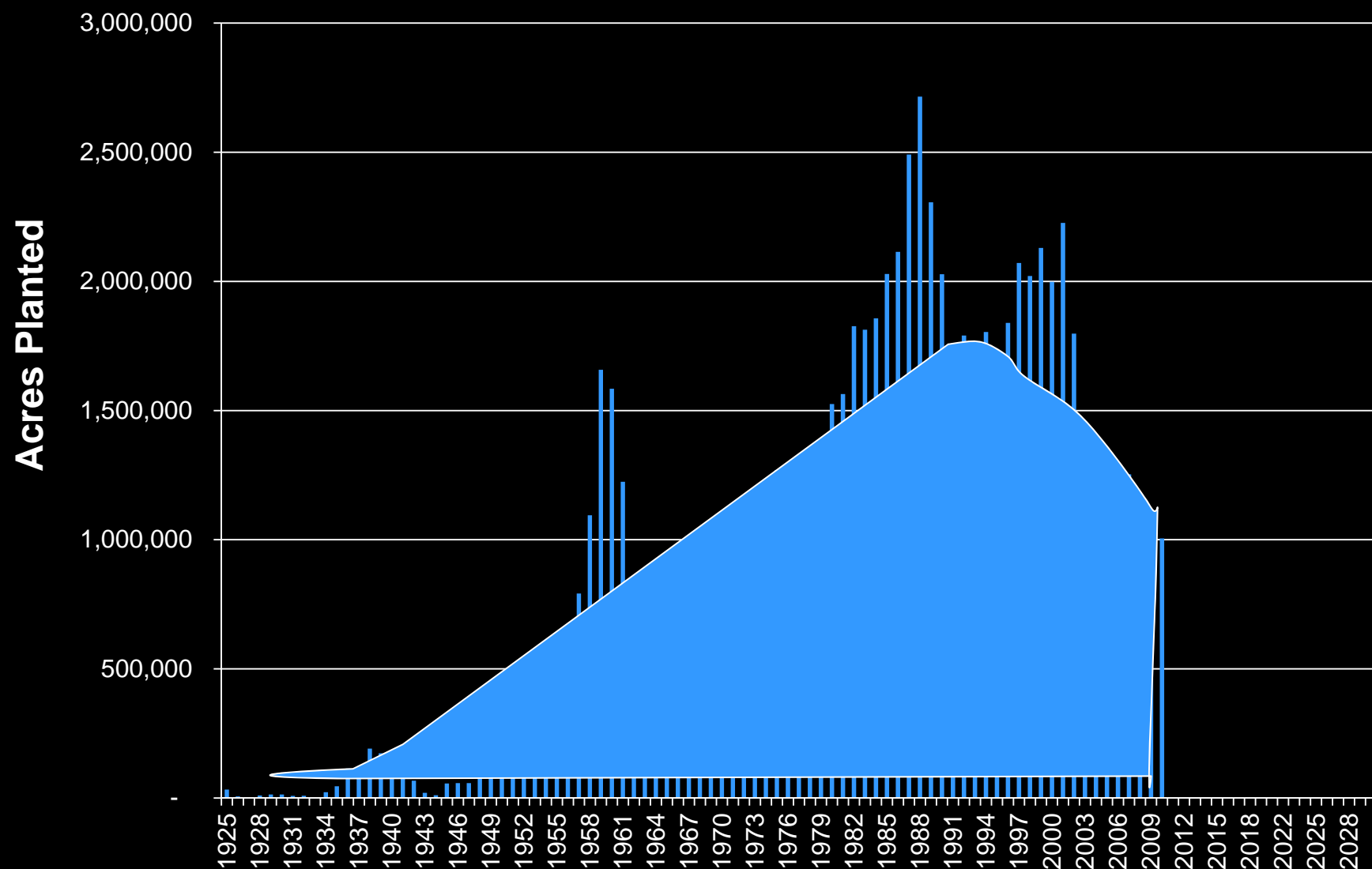
Data from Longleaf Alliance and Nursery Cooperative

Southern US Reforestation Trends

- ✓ Seedling production peaked at 1.358 billion seedlings and planting peaked at 2.226 million acres reforested in 2001.
- ✓ Production and planting in 2009 is down 26% & 24% from 2001 levels, respectively.
- ✓ Since 1945 cost share programs (Soil Bank, Conservation Reserve Programs) are a major factor in increasing seedling planting and subsequent production.



Southern Seedling Planting all Owners & all States: 1925-2009



Data from USFS and GFC

FUTURE SEEDLING PRODUCTION & PLANTING

Will the graph continue down, stabilize or increase?

Market (prices) for wood products

Cost share programs

Carbon Credits: Up or Down

Restoration efforts

Number of Nurseries Closed & Potential Seedling Production Lost

