

# AU Parking

# No-cost Commuter Parking Zones

- CDV Village
  - Demolition of housing units
  - Parking remains
- Intramural Fields
- JCS Museum

# new Parking Deck

- 735 Parking Spaces
  - 550 replacement spaces
  - 185 additional space
- Open: July 24
  - Summer: A and B zone Permits
  - Fall: D zone Permits only
- Haley A & B Lots
  - will close for Student Center construction
  - Client area of A Lot to remain open

# Parking Deck: D Zone Permits

- Number of Permits = number of Spaces
  - Safety / efficiency – no space hunting
  - D Permits authorized to park in C zones
    - D Permits not authorized to park in A & B zones
  - loading / unloading – Loading Zone Permits
- anticipate under subscription
  - First request for Permits – all authorized
  - if undersubscribed, available to GTAs

# Auburn University Statistics

- Total spaces – 10,610
- Total vacant spaces – 2,288
- Cost - surface parking space - \$2,500
- Cost – garage parking space - \$12,500

# Comprehensive Parking Study

- Open Forum Meetings
  - early Fall Semester
  
- Data
  - Space to Permit ratios
  - Occupancy / Vacancy assessment
  - Traffic / loading-unloading / congestion
  - A, B, C, R zones v. geographic zones
  - SREB Parking Fee Comparison
  - Residential Parking Strategy

# Permits to Space Ratio

Zone	Spaces	Permits	Ratio
A	1,446	3,150	2.2
B	1,740	1,880	1.1
A + B	3,186	5,030	1.6
C	5,226	13,049	2.5

Spaces Available at Peak  
(empty) By Zone  
Total: 2,288

M  
386

L  
45

N  
218

I  
508

J  
107

K  
343

E  
47

A  
86

B  
39

F  
49

G  
76

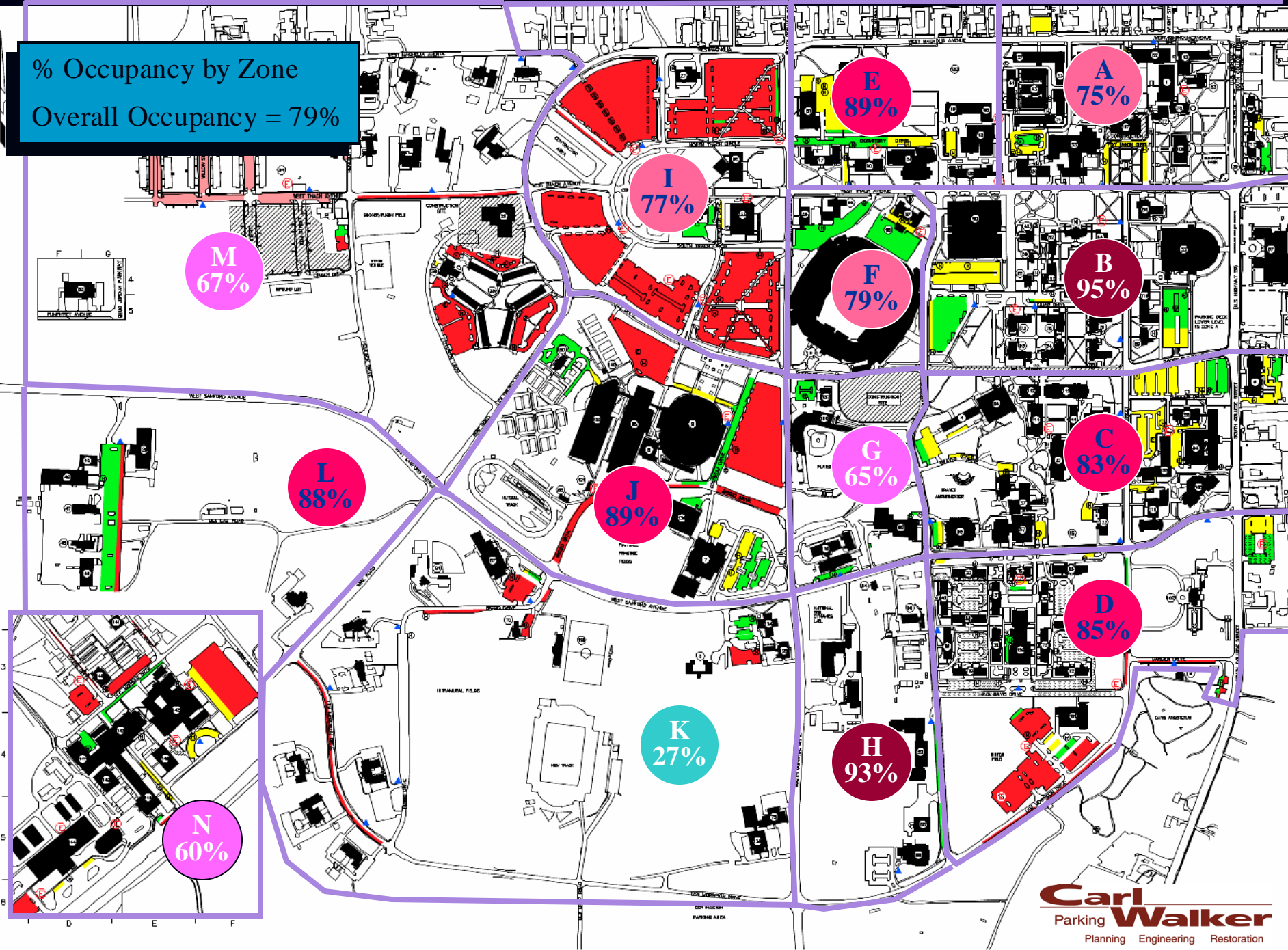
C  
116

D  
208

H  
60



% Occupancy by Zone  
Overall Occupancy = 79%



# SREB Comparison - Faculty

