

Auburn University Campus Growth, Traffic, Parking and Transit

October 2, 2007

University Traffic & Parking Committee

19 members

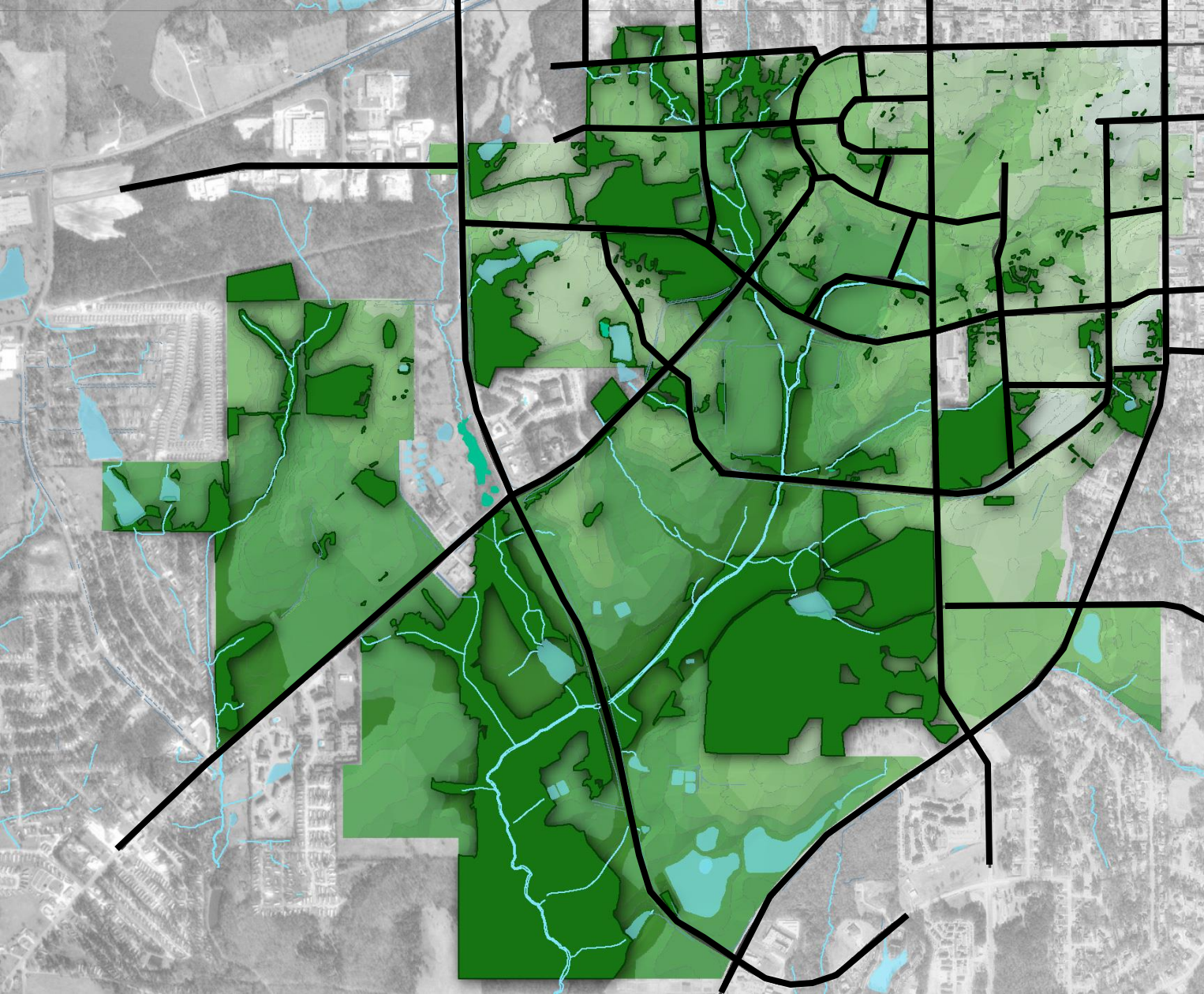
- Three faculty
- Assistant Vice President for Facilities or designee as chair
- Director of Parking and Transit
- Auburn Public Safety Chief or designee
- Athletic Director or designee
- Manager of Parking Services
- ADA Coordinator or designee
- Two A&P members serving two-year staggering terms
- Two Staff members serving two-year staggered terms
- One Graduate student
- Four Undergraduate students
- One undergraduate student alternate

One student must be a resident of University student housing.

Faculty Representatives

- Winifred Foster – Aerospace Engineering
fostewa@auburn.edu
- Jong Wook Hong – Mechanical Engineering
hongjon@auburn.edu
- Rod Turochy – Civil Engineering
turocre@auburn.edu

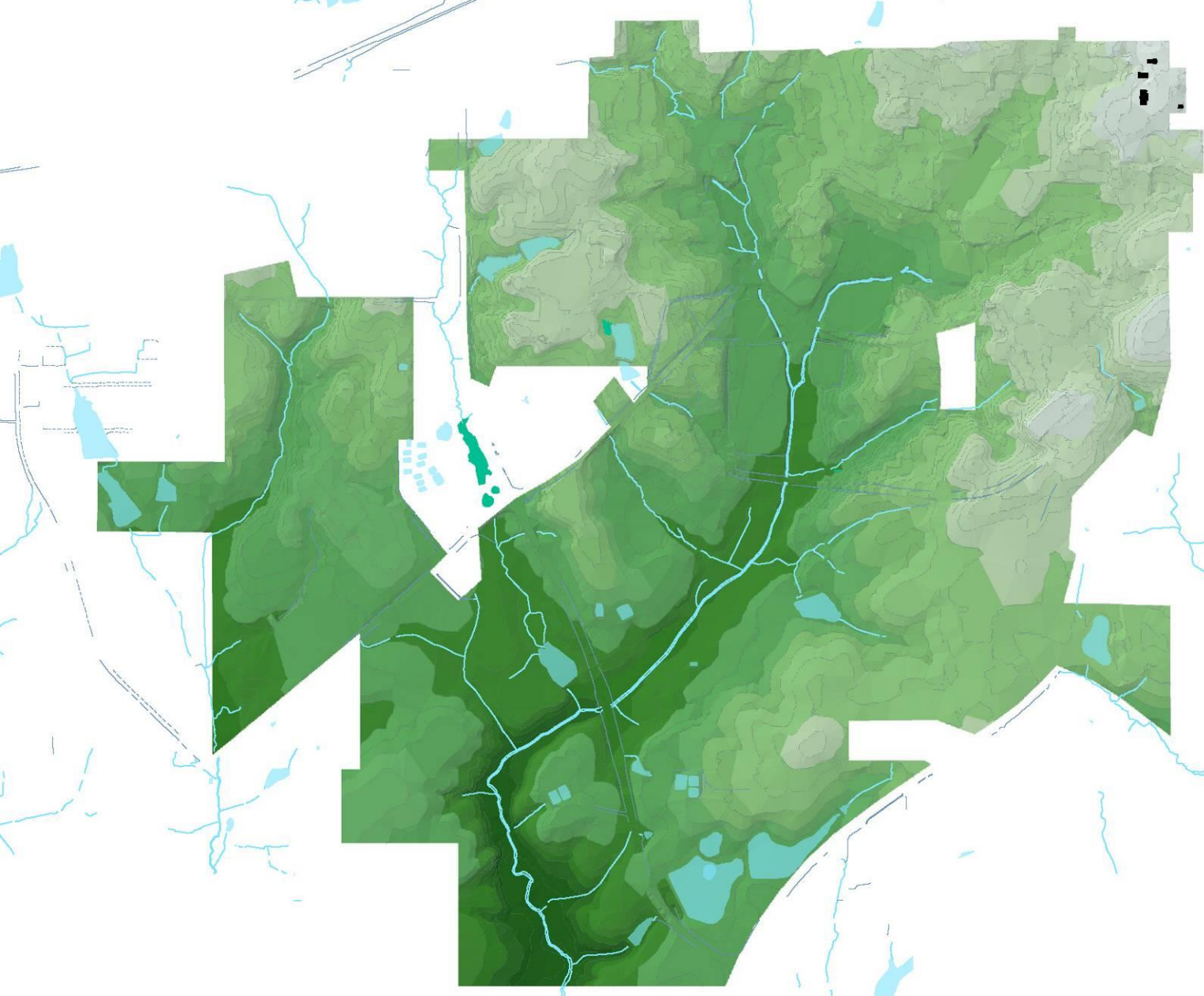
Campus Building Expansion 1900 – Present



Roads

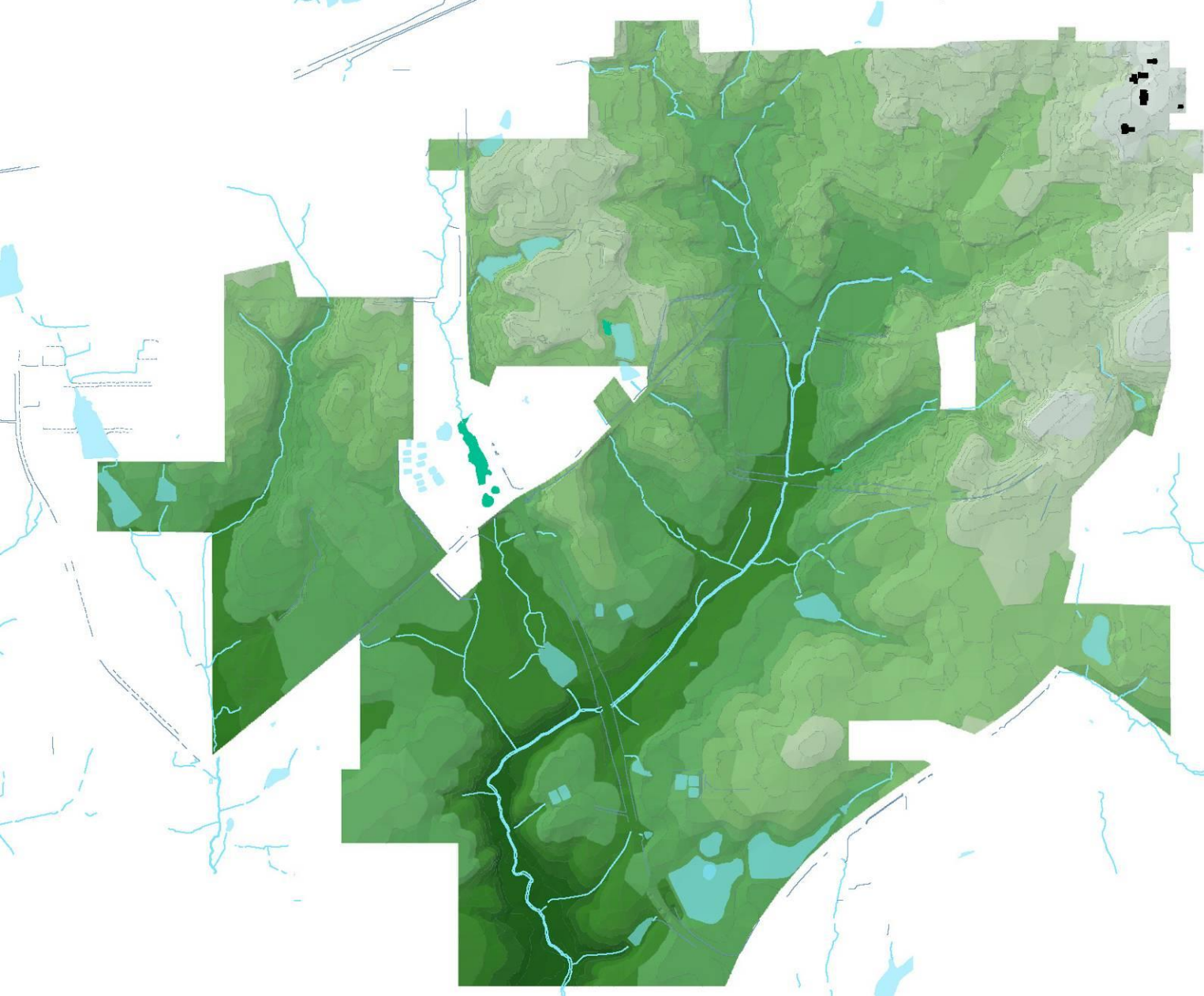
Historic Expansion

Pre - 1900



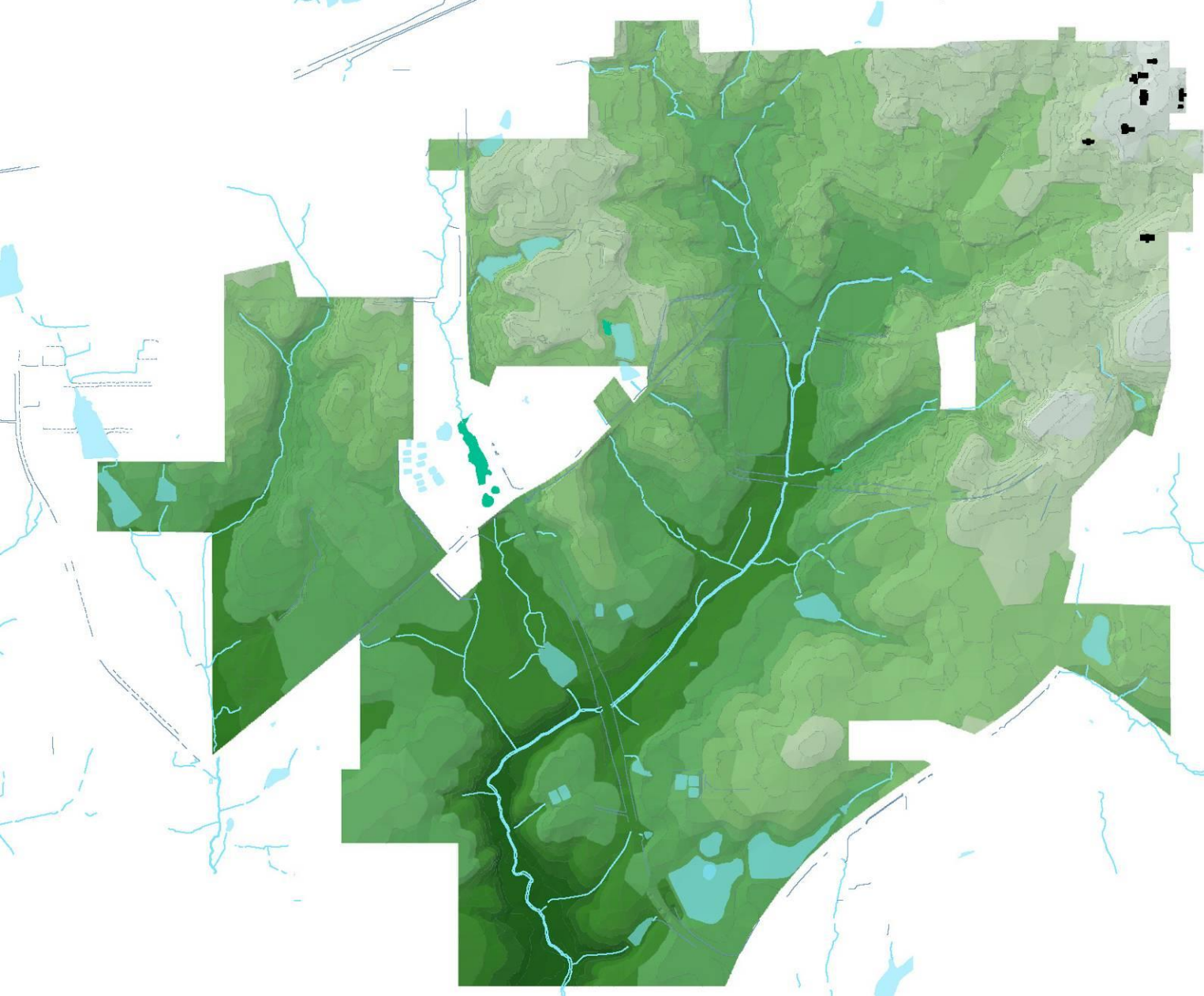
Historic Expansion

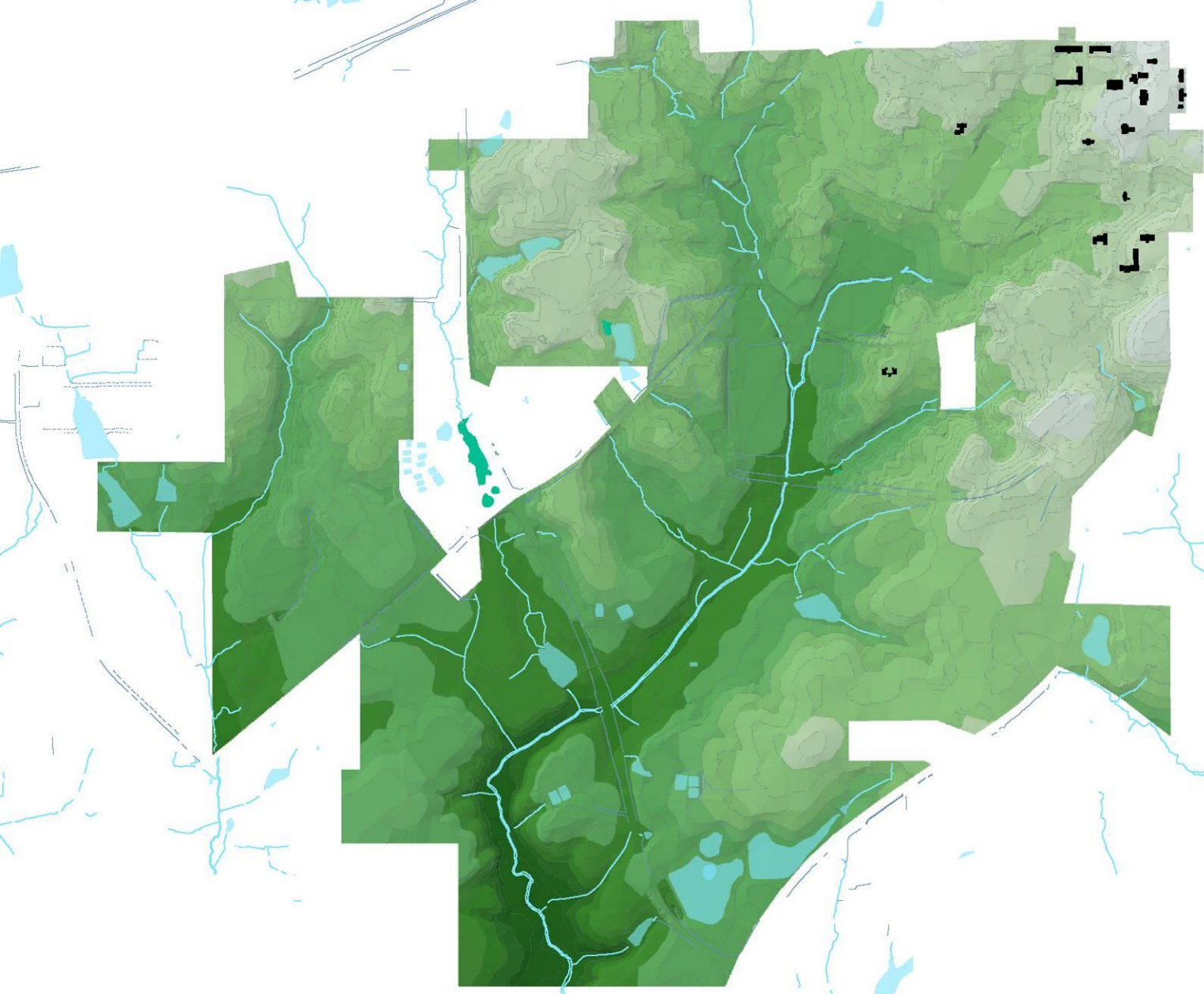
1900 - 1909



Historic Expansion

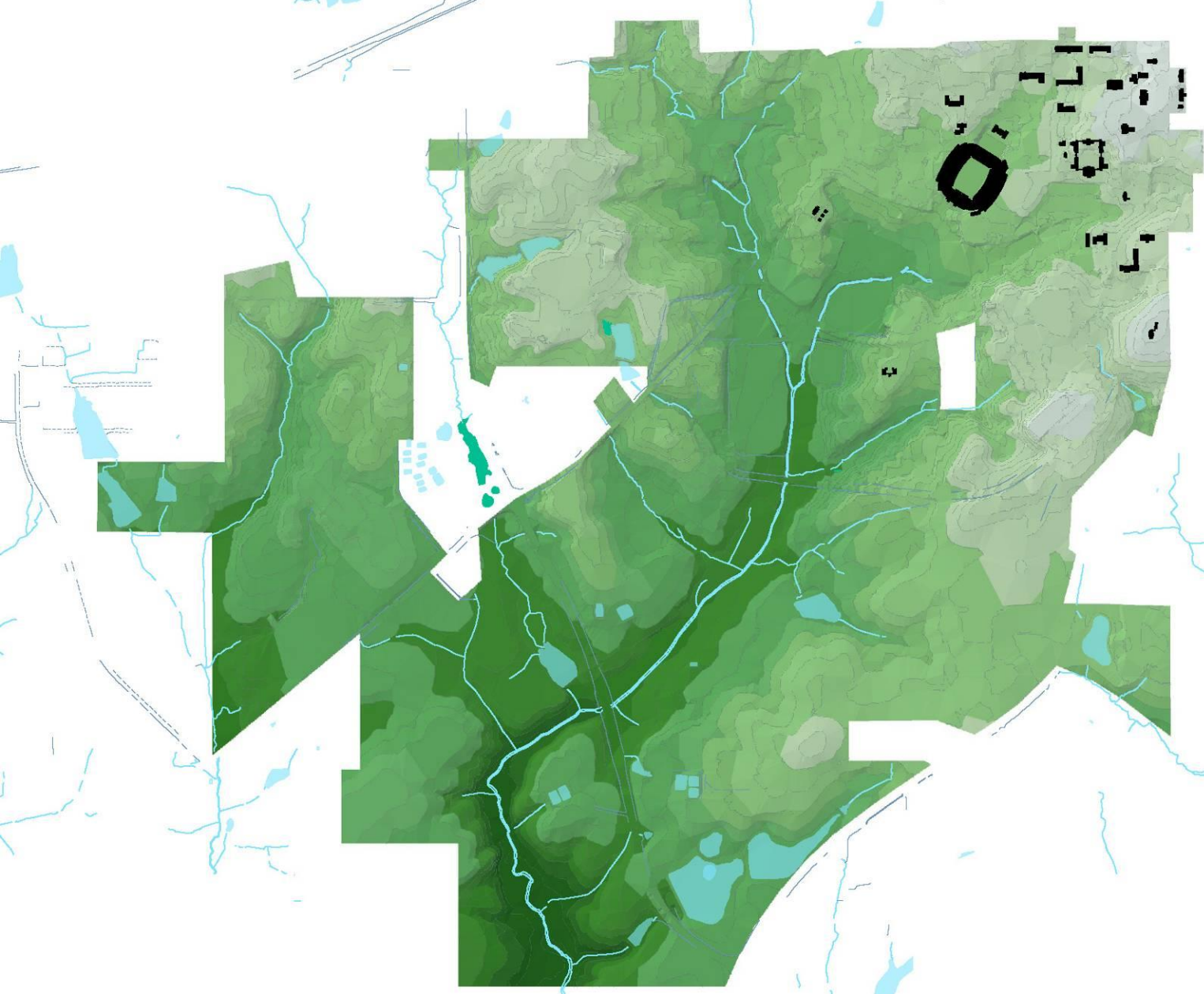
1910 - 1919





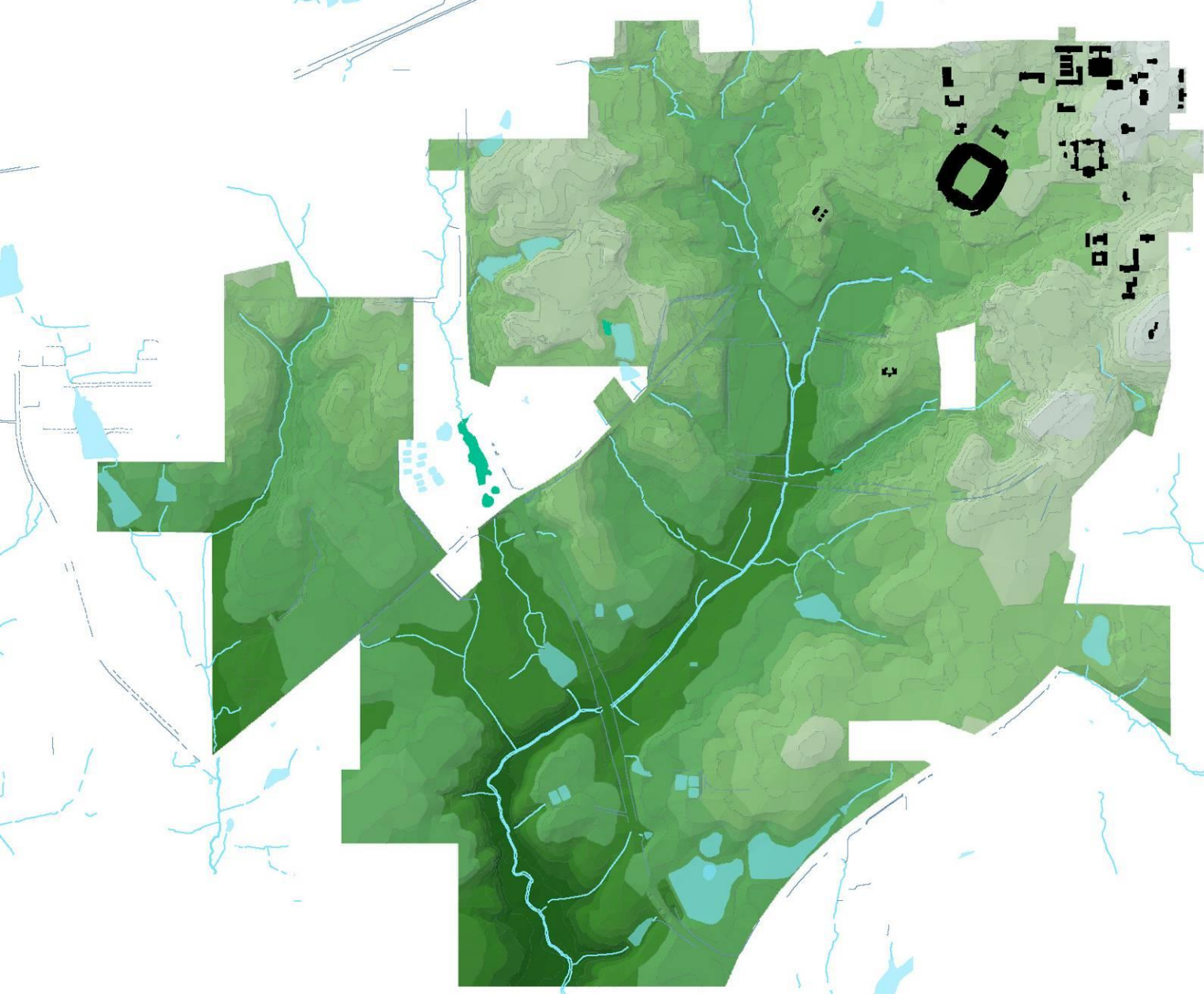
Historic Expansion

1920 - 1929



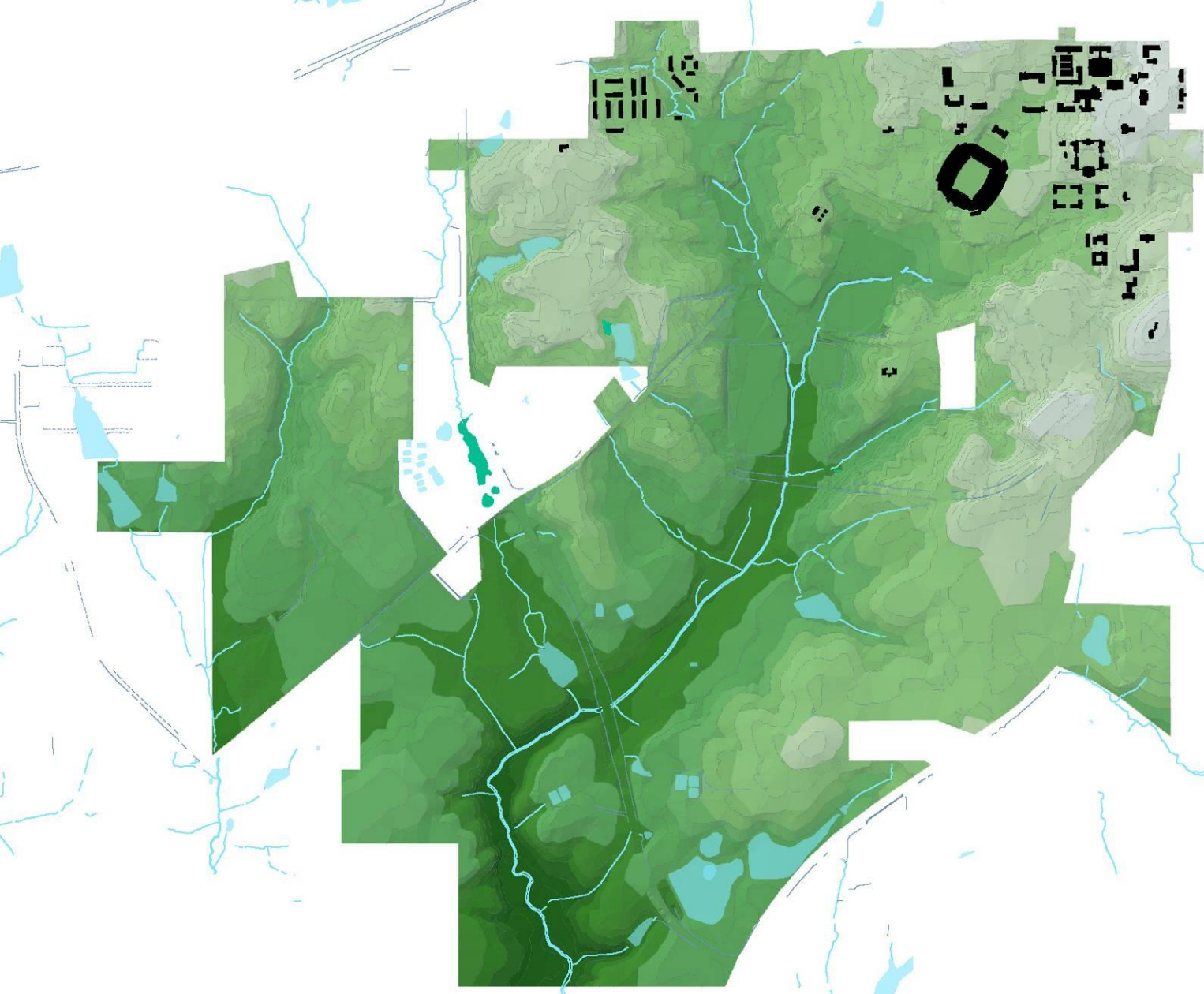
**Historic
Expansion**

1930 - 1939



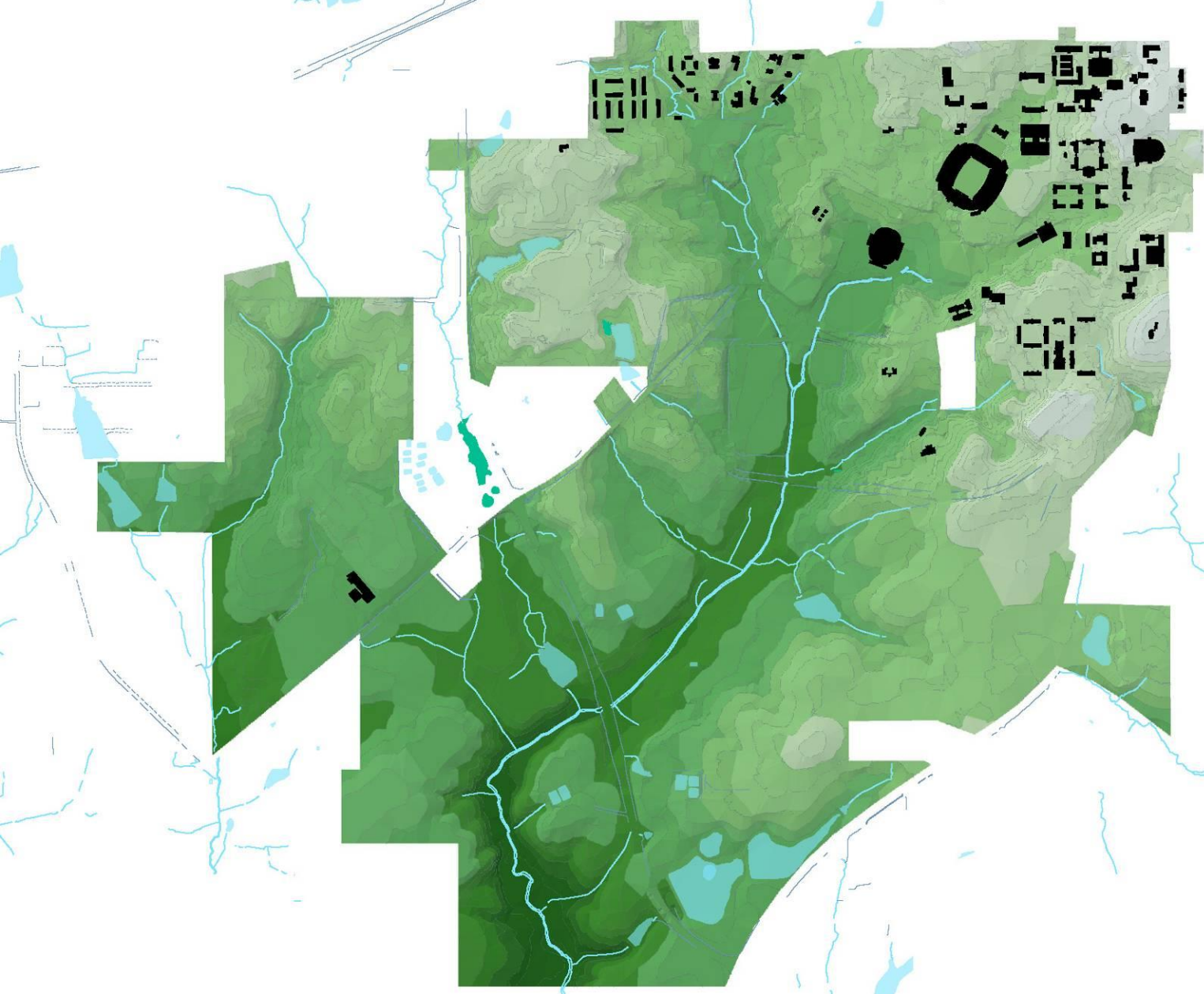
**Historic
Expansion**

1940 - 1949



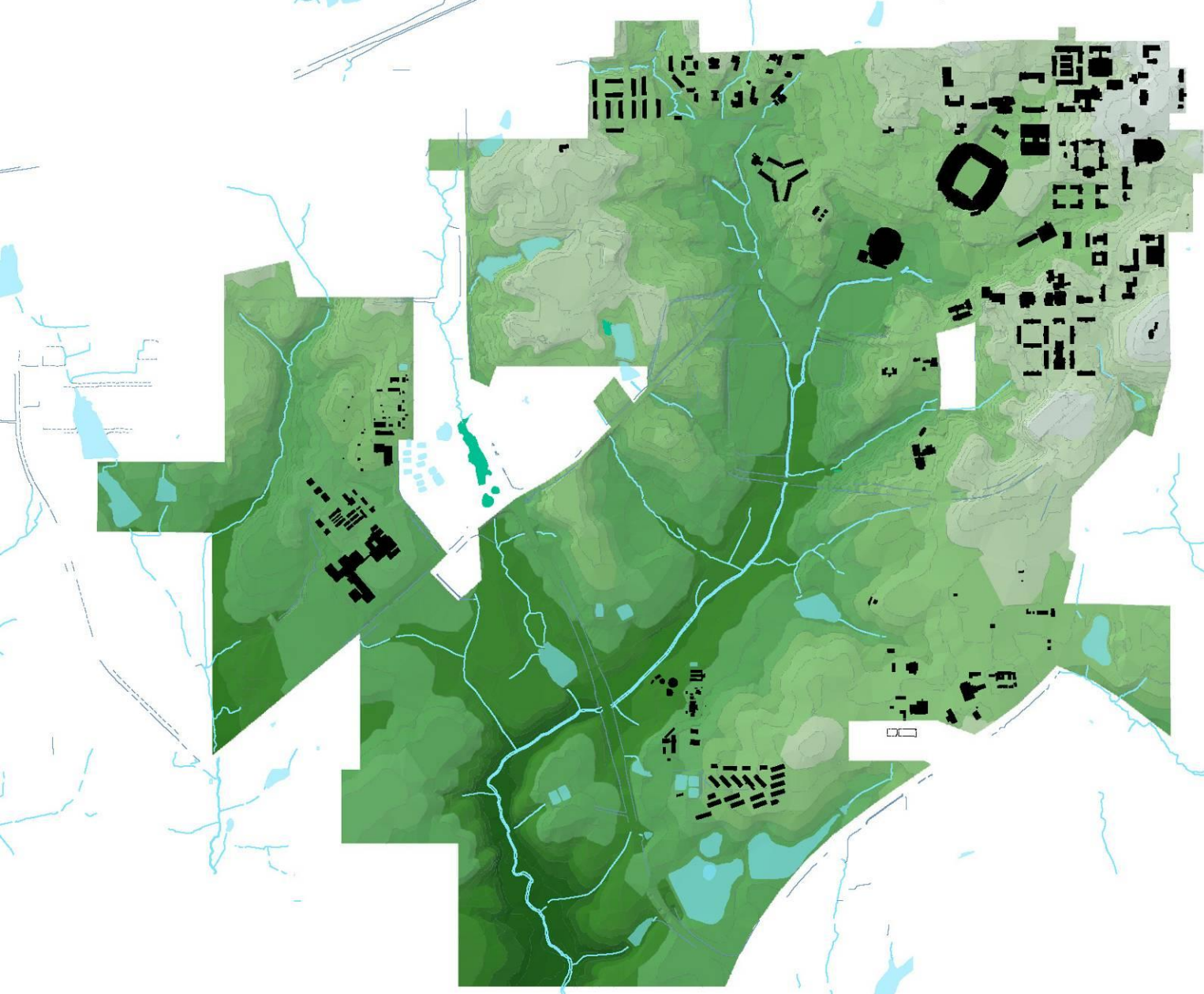
Historic Expansion

1950 - 1959



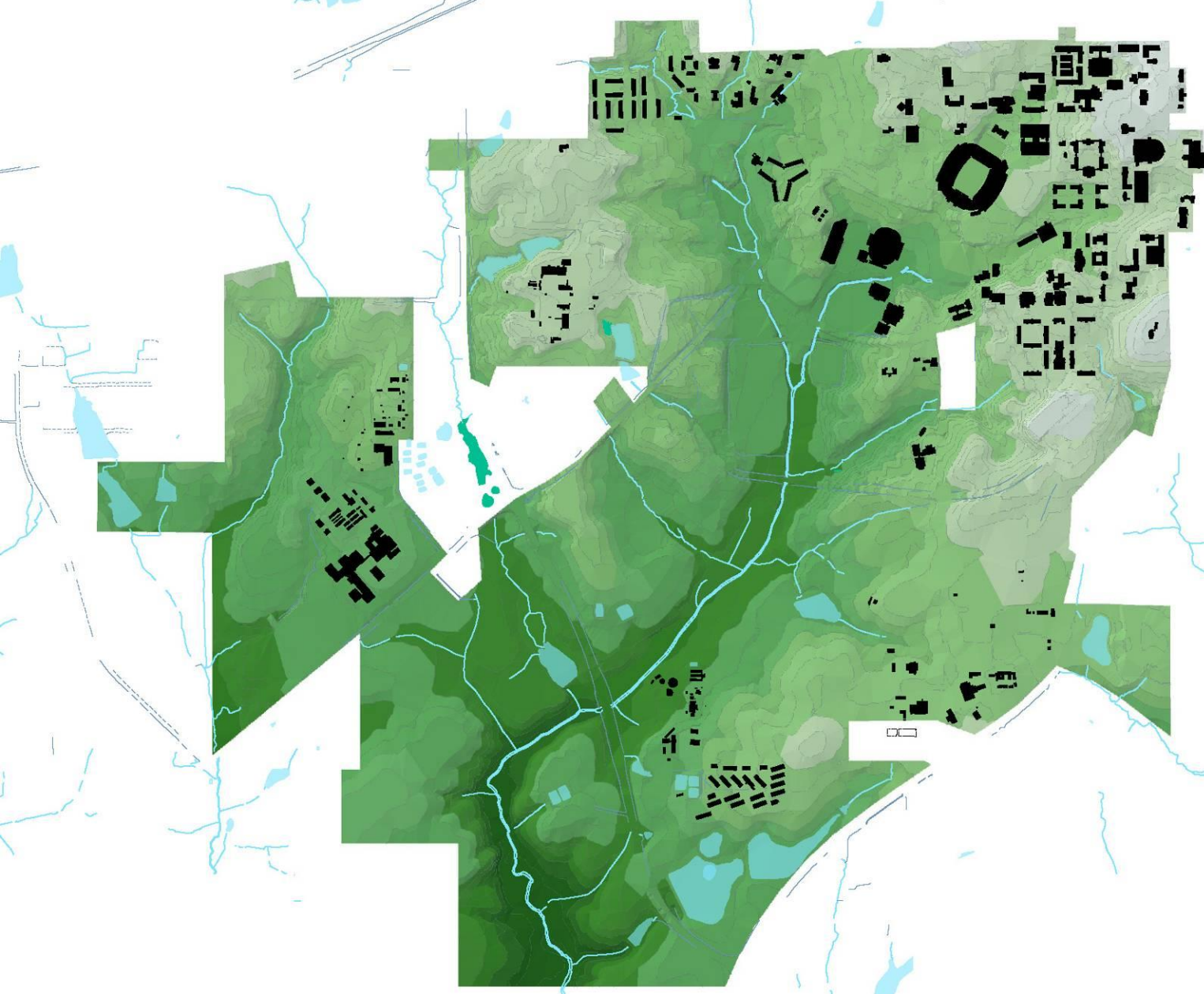
**Historic
Expansion**

1960 - 1969



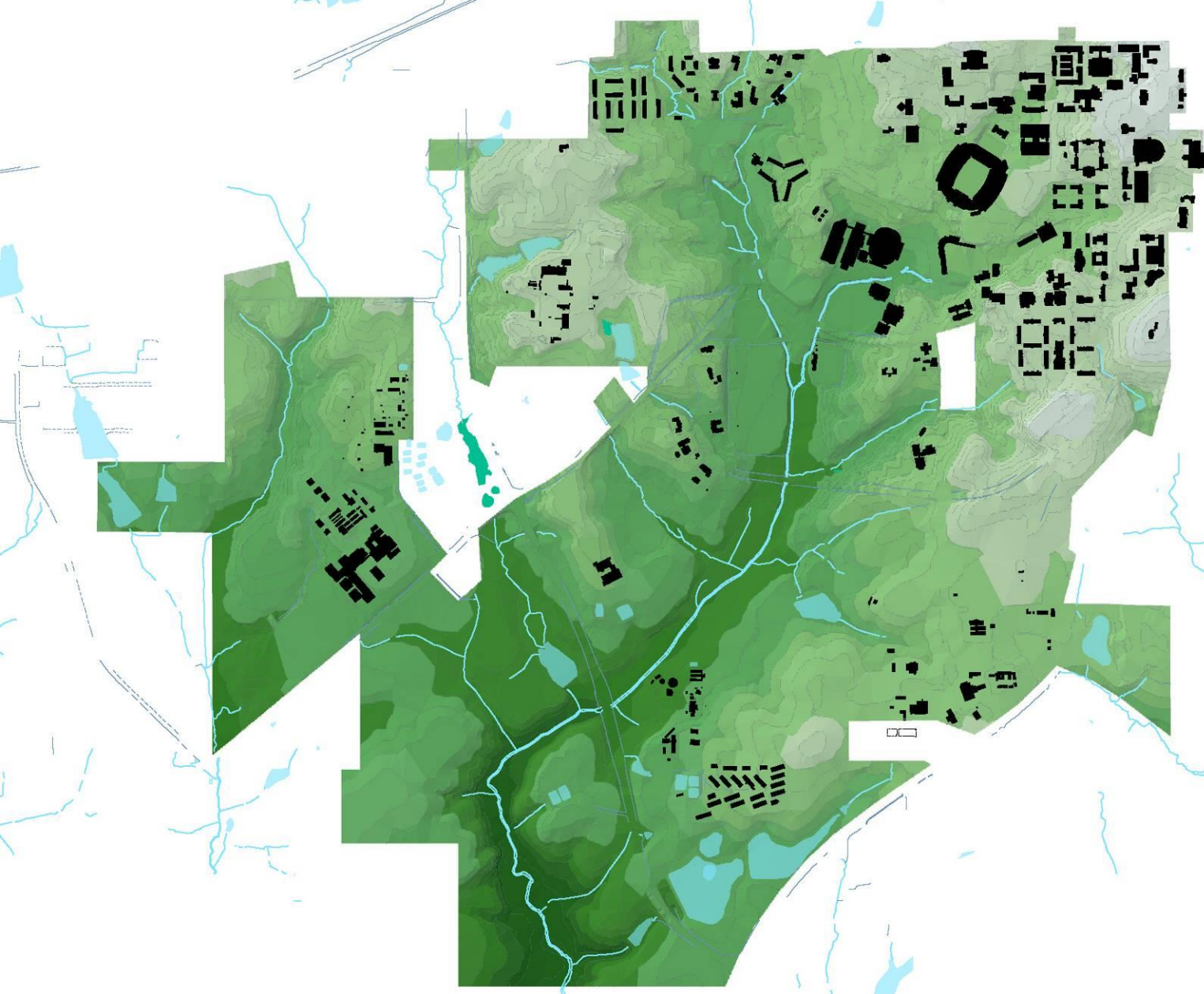
Historic Expansion

1970 - 1979



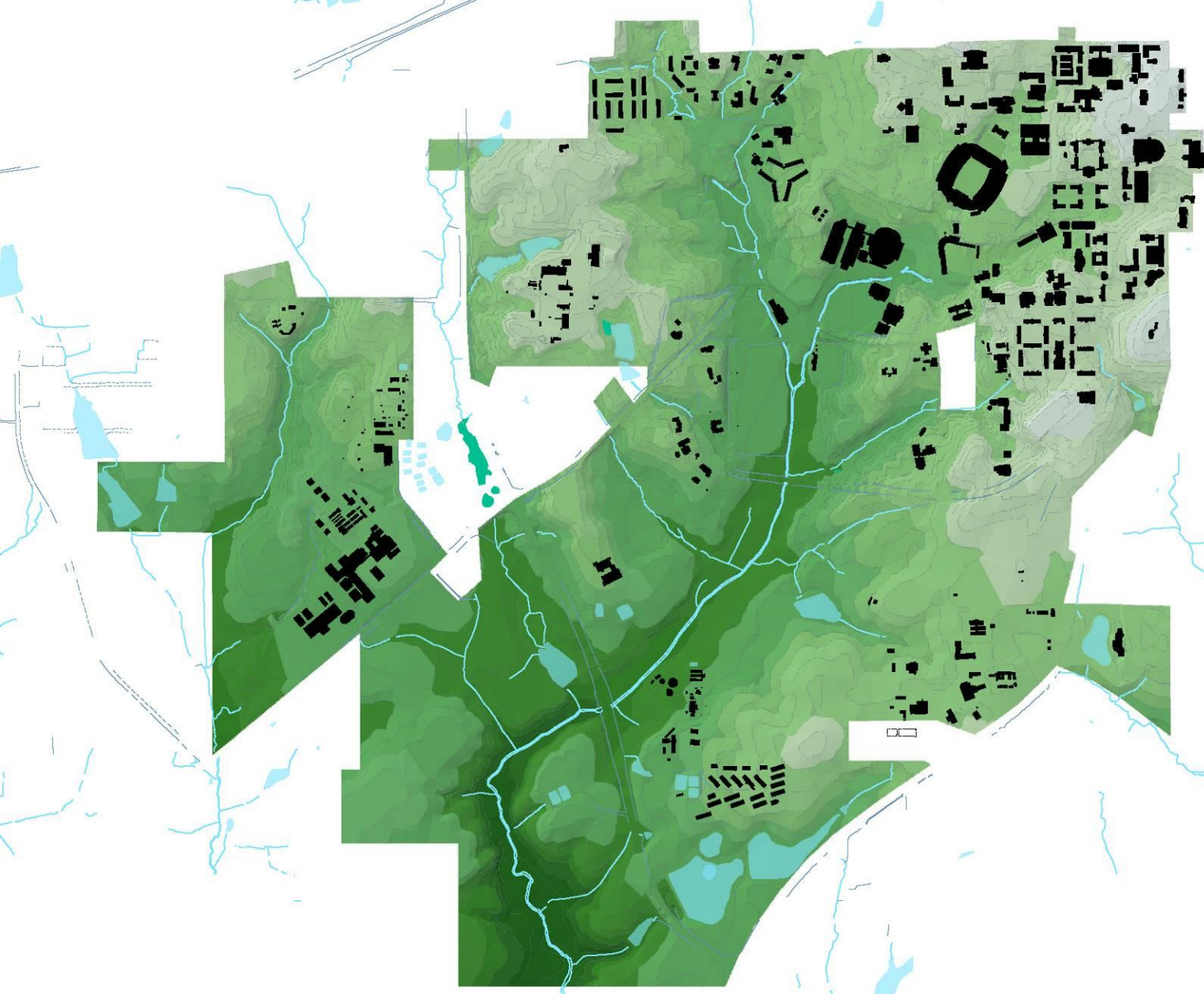
**Historic
Expansion**

1980 - 1989



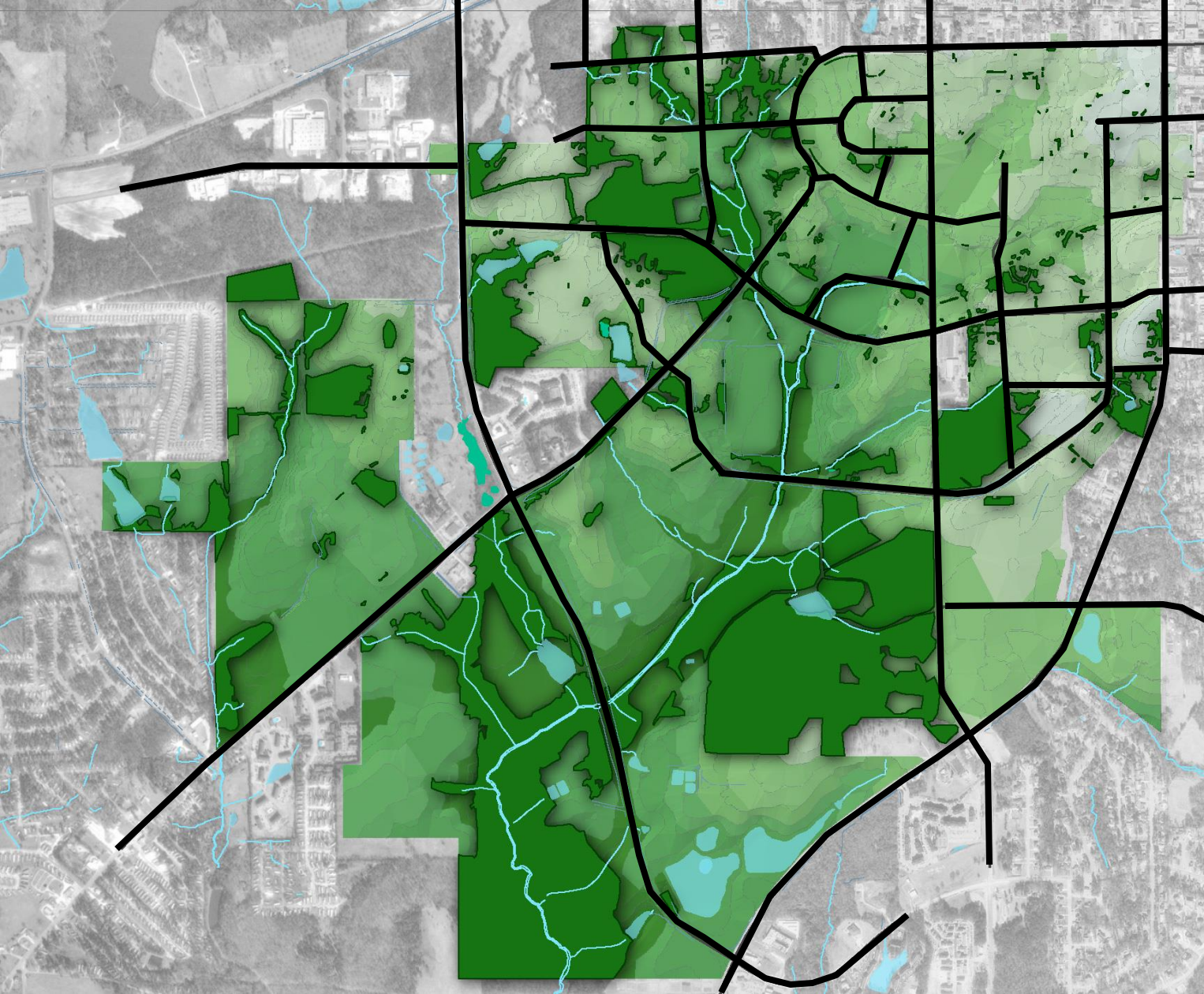
**Historic
Expansion**

1990 - 1999

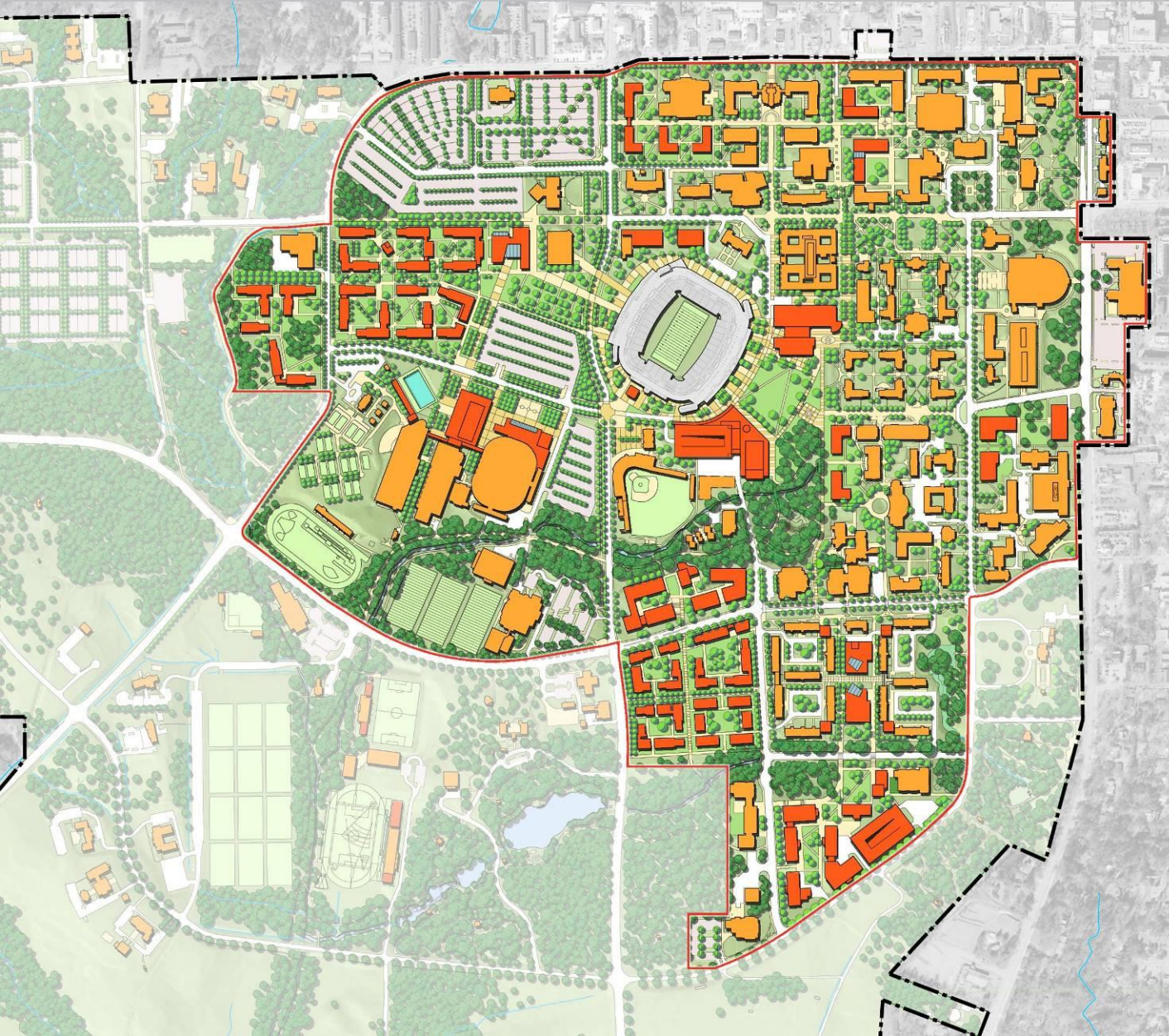


**Historic
Expansion**

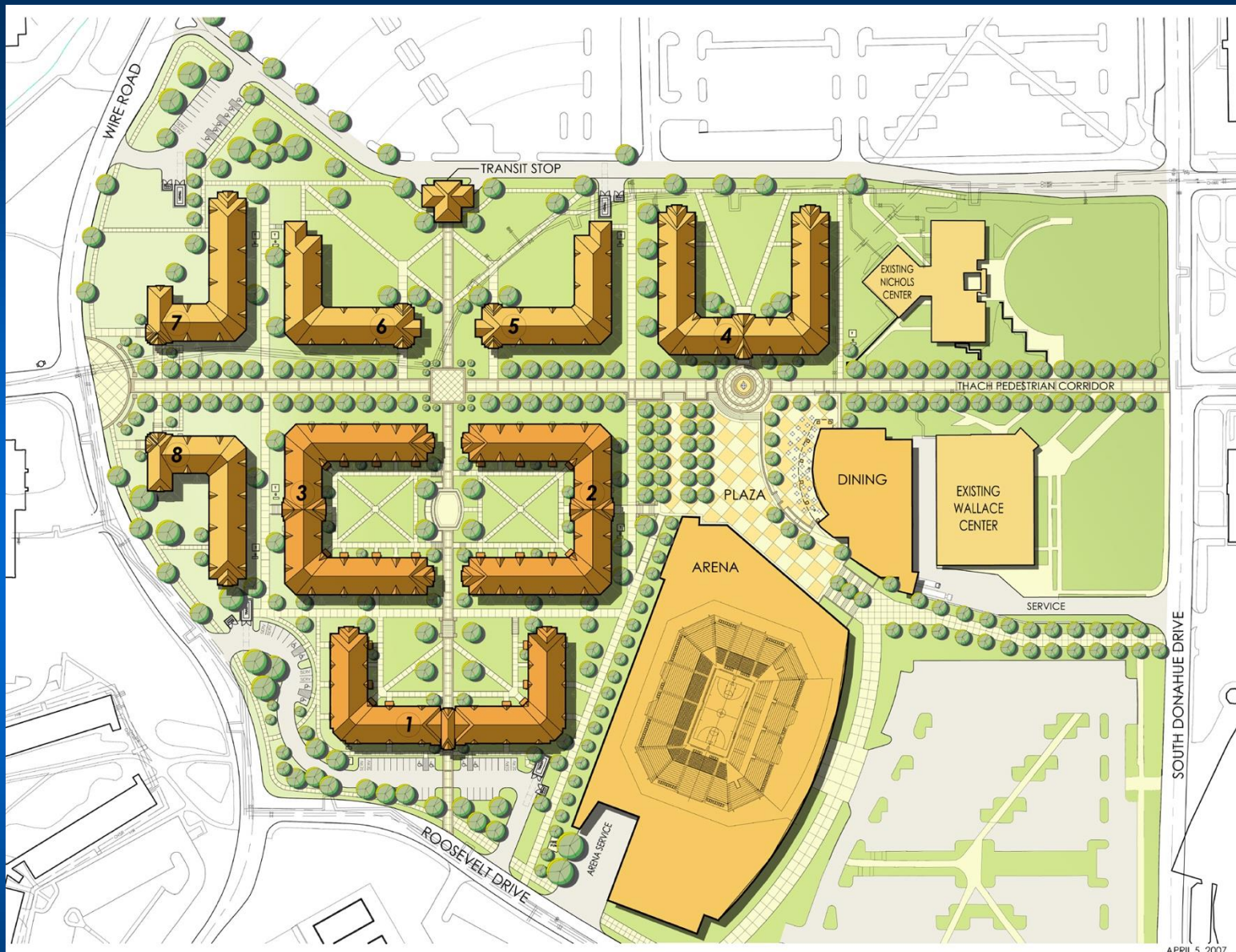
2000 - 2005



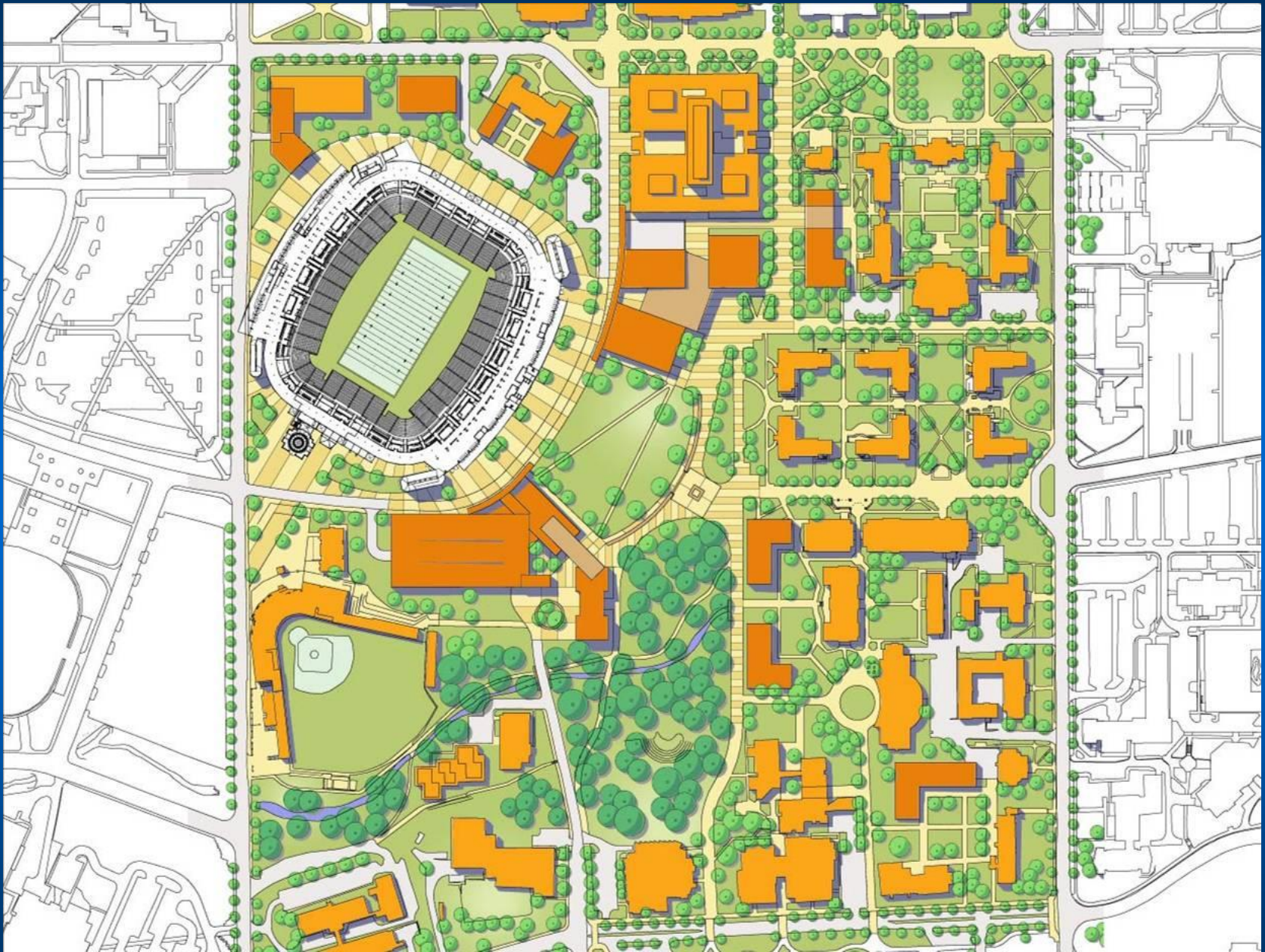
Roads



Growth Boundary



Site Plan



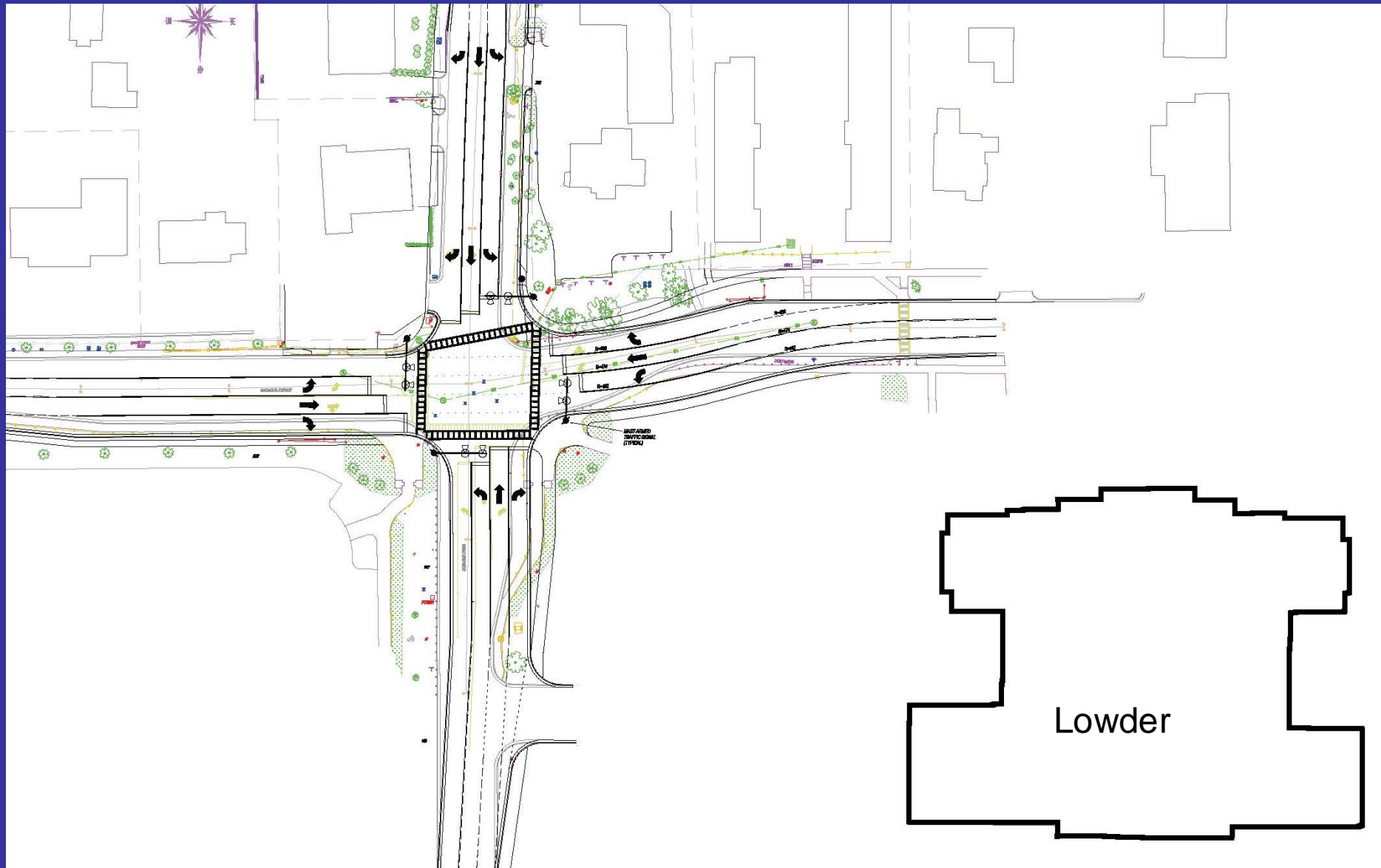


Incoming Traffic
Flow

Campus Congestion

- Donahue @ Magnolia
 - New pedestrian walk on west side of Donahue Drive – North of Magnolia Avenue
 - Intersection widening and improvements in Planning in progress
 - Interim solutions proposed to the City
 - (it is their intersection)
- Dormitory Drive
 - Pedestrian traffic control – solutions evaluation
 - Student drop-off traffic control – solutions evaluation

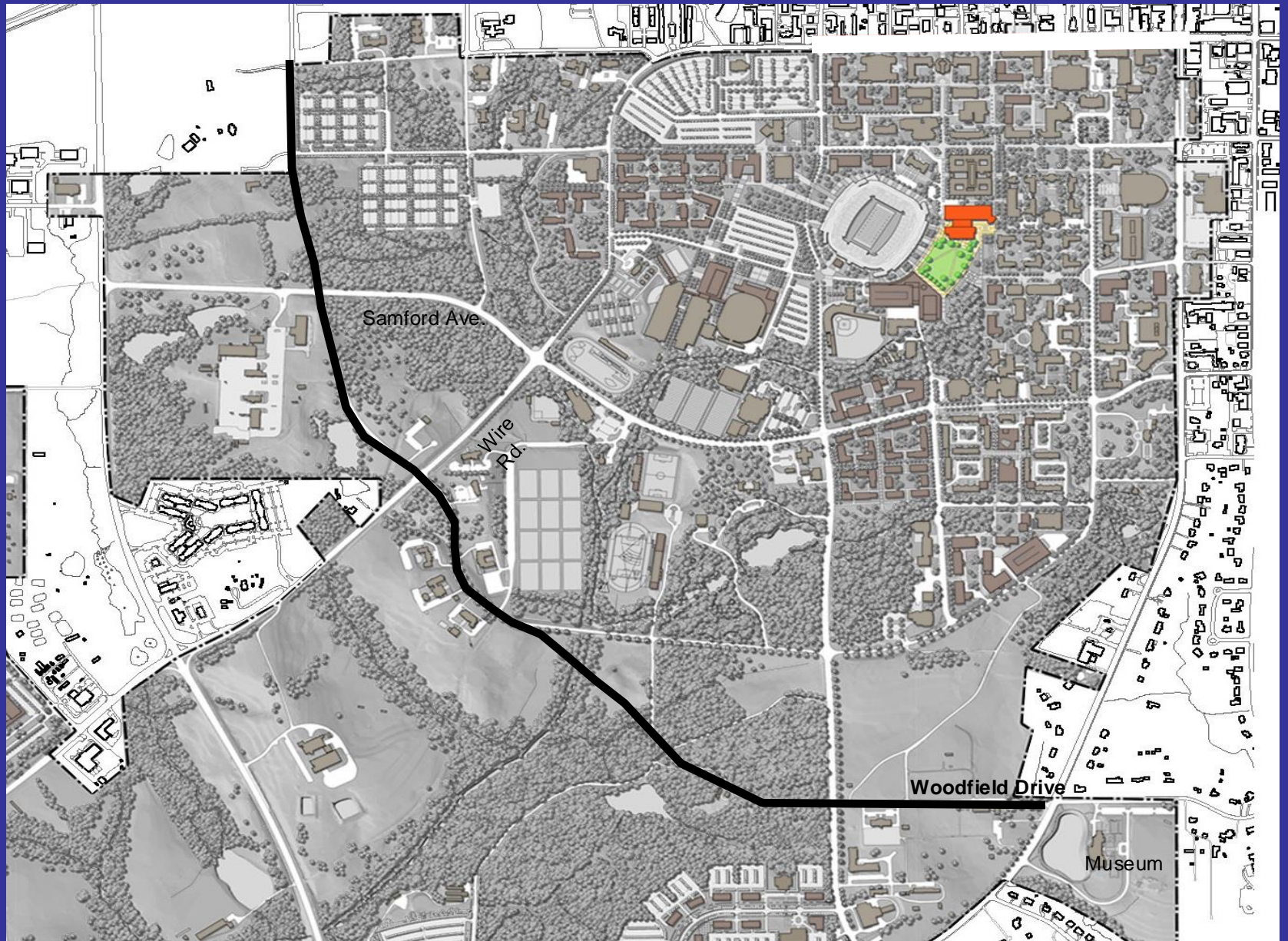
Donahue Drive & Magnolia Avenue Intersection Improvements



Planning Projects in process

- Improvements to Donahue Drive and Magnolia Avenue Intersections
- Development of a Loop Road
- Improvements to Magnolia Avenue
- Review of service and state vehicles
- Review of parking strategies for employees

Loop Road



Campus Parking

•University Parking

- Handicapped
- State and Service Vehicles
 - Loading/unloading
 - Special Parking (electric vehicles)
- Visitor and Event Parking
 - Delivery and Contractor Parking

•Employee Parking (Commuters)

- Faculty, A&P, Staff
 - Graduate Assistants

•Student Parking

- Commuters
- Residents
 - Short-term/loading/unloading

Campus Parking Planning Parameters

- **Total number of Parking Spaces available**
- **Number of Spaces to Number of Permits Ratio**
- **Location of Spaces – convenience / distance**
- **Occupancy Survey: Available spaces in the Parking Deck**

Employee Parking Trends

	Fall 2003	Spring 2005	Spring 2006	Spring 2007	Fall 2007
Parking Spaces	3696	3577	3166	3584	3466
Permits Sold	5042	4591	4268	4275	3807
Permit to Space Ratio	1.36	1.28	1.35	1.19	1.10

Developments

- September 2006 – Carl Walker, Inc. Conducted 5 Open Forums
- Fall 2006 Occupancy Survey was conducted. (participants Faculty, Staff, and A&P)
- Various meetings held during the year to review Carl Walkers reports, review requests submitted, preparation of the new Student Village and Arena areas, development of the west campus parking areas.
- Traffic and Parking Committee members voted/approved a proximity parking plan for residential students for the President's approval
- Bosscar system for ticket management implemented.
- New Employee Parking Lot on Gay Street (site of former Hardees)

Gay Street Parking



Parking Overview

- **Segregate Student and Employee Parking**

- Different planning parameters

- **Walker Recommendations**

- If Assigned Lot for employees, drop A-B differentiation
- Use a priority system for employee parking assignment
- Segregate Resident students (from Commuters)
Broad Zones for Commuter students

Designated Lot Employee Parking Concept Review Spring 2007

- Traffic and Parking Committee requested a more detailed/specific proposal be developed (by Campus Planning) following a survey and review of results
- Only employees requesting permits will be in the pool
 - Years of continuous employment will be a factor in proximity
 - Employee grade (University HR) / Faculty Rank could be a factor in proximity
 - There may be some cost differential for parking proximity

No-cost Parking Zones

- for Employees and Students
- Transit Service
- CDV Village
- Intramural Fields
- JCS Museum

Tiger Transit Ridership Stats

Year	Buses Daily	# of Routes Daily	# of Riders *
2004	36	15	67,268
2005	36	18	72,853
2006	38	20	69,265**
2007	42	20	83,169

*Numbers reflect the total ridership count taken in the first five days of Fall operations.

**Number of riders decreased due to the initiation of construction on the new student center. That project necessitated that the Transit divide up its routes into 3 campus hubs.

Replacement/
Additional
Student
Parking



End