



AUBURN UNIVERSITY
REGIONAL AIRPORT

AU Faculty Senate

June 5, 2012





AGENDA

✈ Airport History

✈ Airport Operations – University

✈ Airport Operations – Community

✈ Airport Outreach / Marketing Efforts

✈ Airport Future Plans



AUBURN UNIVERSITY
REGIONAL AIRPORT



AIRPORT HISTORY

- ➔ 1930 – Built by the Auburn-Opelika Airport Corporation as a privately-owned airport
- ➔ 1931 – Leased by the CAA for Atlanta to New Orleans mail route

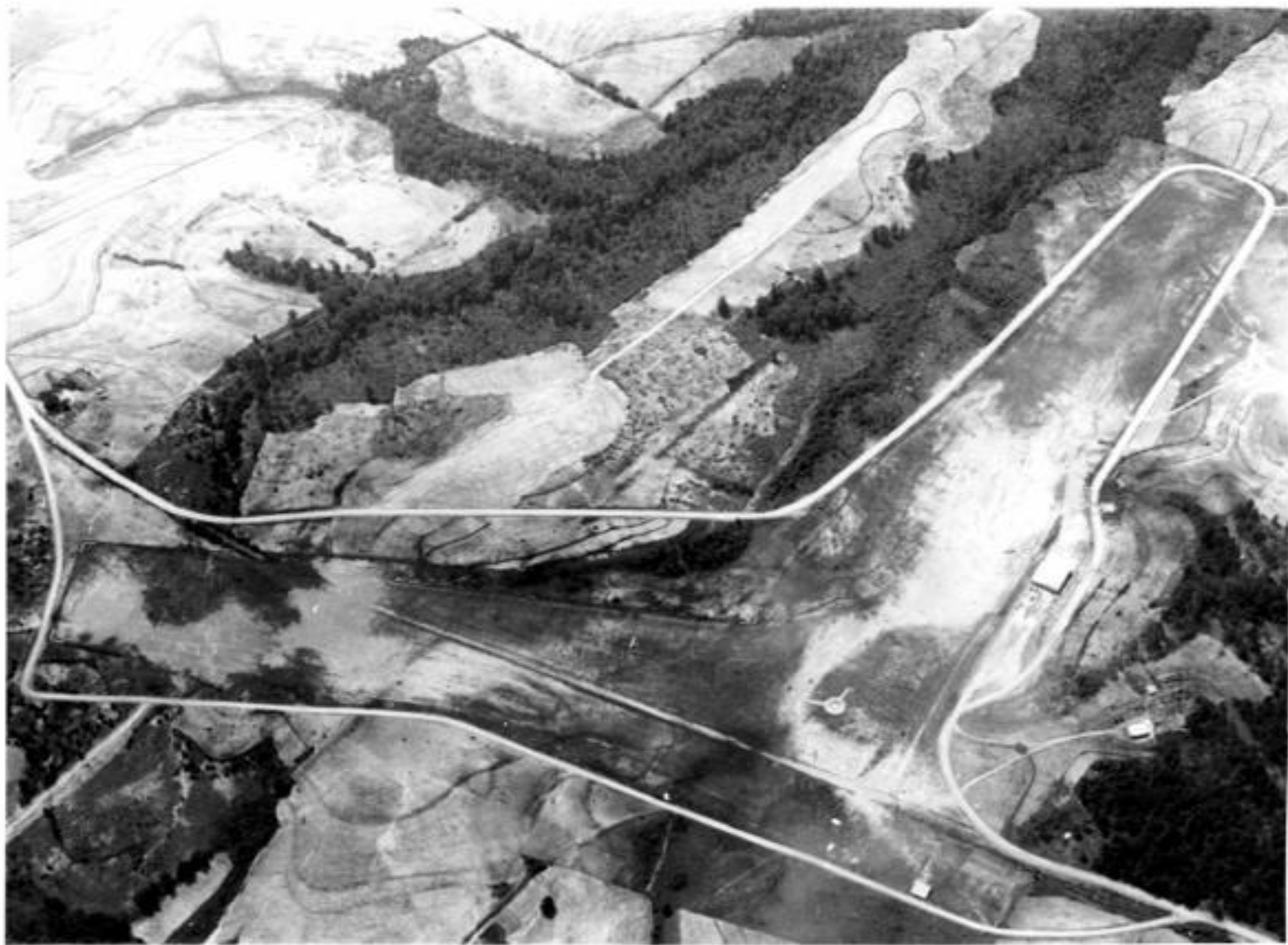




- ➔ 1932 – Commissioned to serve Auburn, Opelika, and the Alabama Polytechnic Institute
- ➔ 1939 – Most of the stock donated to API
- ➔ 1939 -- Served as a pilot training site for the Civil Pilot Training Program









- ➔ Owned by Auburn University, which has been awarding aviation degrees since 1930
- ➔ Strong Partnership exists with cities of Auburn, Opelika, and Lee County
- ➔ Current name is Auburn University Regional Airport



AUBURN UNIVERSITY
REGIONAL AIRPORT



Gary Fuller, Chairman, Mayor of Opelika

Johnny Lawrence, Vice-Chairman,

County Commissioner

Bill English, Probate Judge/Chairman,

Lee County Commission

Bill Ham, Mayor of Auburn

Joe Hanna, Associate Dean, College of Business

Mike Hubbard, State Rep., Speaker of the House

Joey Motley, Councilman, Opelika

Dick Phelan, Councilman, Auburn

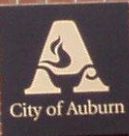
Tom Tillman, University Planner



AUBURN UNIVERSITY
REGIONAL AIRPORT

Auburn University Regional Airport

*A City of Auburn, City of Opelika,
Lee County and
Auburn University Partnership*



*A City of Auburn, City of Opelika,
Lee County and
Auburn University Partnership*





→ 423 Acres

→ 60 Based Aircraft

→ 65,000 Annual Operations

→ \$19.34 Million Annual Economic Impact



AUBURN UNIVERSITY
REGIONAL AIRPORT



AIRPORT OPERATIONS – UNIVERSITY



AUBURN UNIVERSITY
REGIONAL AIRPORT







→ Professional Flight Management

→ ~100 Total Flight Students

→ 15 Aircraft

→ Airport Support: Fueling, Maintenance,
Safety/Growth of Airport, etc.



AUBURN UNIVERSITY
REGIONAL AIRPORT





✈ Misc. Research

- Fire Ants
- Wildlife/Birds
- AE Remote Controlled Aircraft
- AU Formula SAE Racing

✈ Student Employees

- Customer Service
- Flight Line
- Aircraft Maintenance
- Airport Management Internships





AIRPORT OPERATIONS – COMMUNITY

- ✈ Airport serves as a link to the National Air Transportation System
- ✈ Airport is viewed by the local governments as an economic development tool



















AIRPORT OUTREACH / MARKETING EFFORTS



AUBURN UNIVERSITY
REGIONAL AIRPORT



✈ Civil Air Patrol

- USAF Auxiliary Unit Since 1941
- 3 Missions: Aerospace Education, Cadet Programs, Emergency Services
- Includes Leadership Skills, Character Development, and Physical Fitness

✈ Auburn Composite Squadron Meets at AUO

- Active/Award Winning Squadron
- Assists with Engineering Technology Academy hosted by the College of Engineering







WAVI SM

NewTalk 1400







E
5L





Welcome!

Dean Road Elementary School
Career Day

May 12, 2003

New Terminal Building Now Open



Conveniently located just off I-85 in East Central Alabama, the new 26,000 sq ft terminal building is now open. The terminal boasts a large crew lounge, snooze rooms, flight planning room, and wireless Internet.



AUBURN UNIVERSITY
REGIONAL AIRPORT

2150 Mike Hubbard Blvd., Auburn, AL 36830
334.844.4597 • Fax: 334.844.4272 • info@aubairport.com • aubairport.com



AUBURN UNIVERSITY REGIONAL AIRPORT



11/06/10 Auburn vs. Chattanooga

Visit our NEW 26,000 sq ft. facility at AUO!

-  **FREE Game Day Shuttle Starting 4 Hours Before The Game Until 2 Hours After**
-  **Six Flat Screen TVs up to 55 inches**
-  **Outside Recreational Area**
-  **Large Crew Lounge**
-  **15 Minutes From All Hotels**
-  **Jet A & Avgas**
-  **Flight Planning Computers**
-  **Weather Services**



AIRPORT FUTURE PLANS



AUBURN UNIVERSITY
REGIONAL AIRPORT

RUNWAY DATA TABLE				
ITEM	RUNWAY 18/36		RUNWAY 11/29	
	EXISTING (E)	ULTIMATE (U)	EXISTING (E)	ULTIMATE (U)
AIRPORT REFERENCE CODE	4-1	4-1	4-1	4-1
INSTRUMENT RUNWAY	NON-PRECISION/PRECISION	SAFETY	VISUAL/NON-PRECISION	VISUAL/PRECISION
APPROACH SLOPE	341/2001	SAFETY	25-1/34-1	SAFETY
VELOCITY WINDS	1 MILE	1/2 MILE	1 MILE	1 MILE
WEAVING	PRECISION	SAFETY	NON-PRECISION	SAFETY
LEADING	100% W/L	SAFETY	100% W/L	SAFETY
APPROACH AIDS	PARA. ILS, MALSR	SAFETY	PARA. ILS, MALSR	SAFETY
RUNWAY LENGTH	3294'	4000'	4000'	4100'
RUNWAY WIDTH	100'	100'	100'	100'
RUNWAY BEARING	01.32/181.32	SAFETY	107.26/267.26	SAFETY
5 WIND COVERAGE	08.37 @ 18 KTS	SAFETY	05.07 @ 13 KTS	SAFETY
EFFECTIVE GRADIENT	0.00%	0.00%	0.00%	0.00%
PAVEMENT STRENGTH (ASPHALT)	45,000 PSI	144,000 PSI	43,000 PSI	40,000 PSI
CRITICAL AIRCRAFT	0-1	0-1	0-1	0-1
RUNWAY END ELEVATION (MSL)	778.76/772.10'	SAFETY/SAFETY	774.65/768.11'	SAFETY
DECEASED THRESHOLD ELEVATION	N/A / N/A	SAFETY	N/A / N/A	SAFETY
OBJECT FREE AREA WIDTH	500'	500'	500'	500'
SLABT PACE	NONE	NONE	NONE	NONE

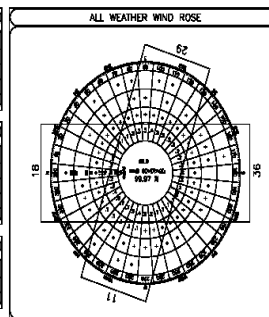
AIRPORT DATA		
ITEM	EXISTING (E)	ULTIMATE (U)
AIRPORT ELEVATION (MSL)	777.76' MSL	SAFETY
AIRPORT REFERENCE POINT (DWP)	777.76' MSL	SAFETY
NEAR MAIL TEMP. HOTTEST MONTH	82° F	SAFETY
THEORY MARGINS	0.00%	SAFETY
NAVIGATIONAL AIDS	VOLUME-AERIAL, LOC. OPS. RDR	SAFETY

RUNWAY END COORDINATES		
RUNWAY	LATITUDE (N)	LONGITUDE (W)
18 (E)	32°57'12.34"	89°25'08.34"
18 (U)	32°57'12.34"	89°25'08.34"
36 (E)	32°57'12.34"	89°25'08.34"
36 (U)	32°57'12.34"	89°25'08.34"
11 (E)	32°57'12.34"	89°25'08.34"
11 (U)	32°57'12.34"	89°25'08.34"
29 (E)	32°57'12.34"	89°25'08.34"
29 (U)	32°57'12.34"	89°25'08.34"

RUNWAY PROTECTION ZONE DIMENSIONS		
RUNWAY END	EXISTING (E)	ULTIMATE (U)
36	1000' x 500' x 1000'	2500' x 1000' x 1500'
18	1000' x 500' x 1000'	1700' x 1000' x 1500'
11	1000' x 500' x 1000'	SAFETY
29	1000' x 500' x 1000'	1700' x 1000' x 1500'

RUNWAY SAFETY AREA DIMENSIONS		
RUNWAY END	EXISTING (E)	ULTIMATE (U)
36	1000' x 300'	SAFETY
18	300' x 150'	1000' x 500'
11	300' x 150'	SAFETY
29	300' x 150'	SAFETY

TOUCHDOWN ZONE ELEVATION		
RUNWAY	EXISTING (E)	ULTIMATE (U)
36	778.0'	771.0'
18	738.0'	SAFETY



SOURCE: NATIONAL CLIMATIC DATA CENTER
MONTGOMERY, AL
1951-2000
COMBINED PERCENT 09.07%

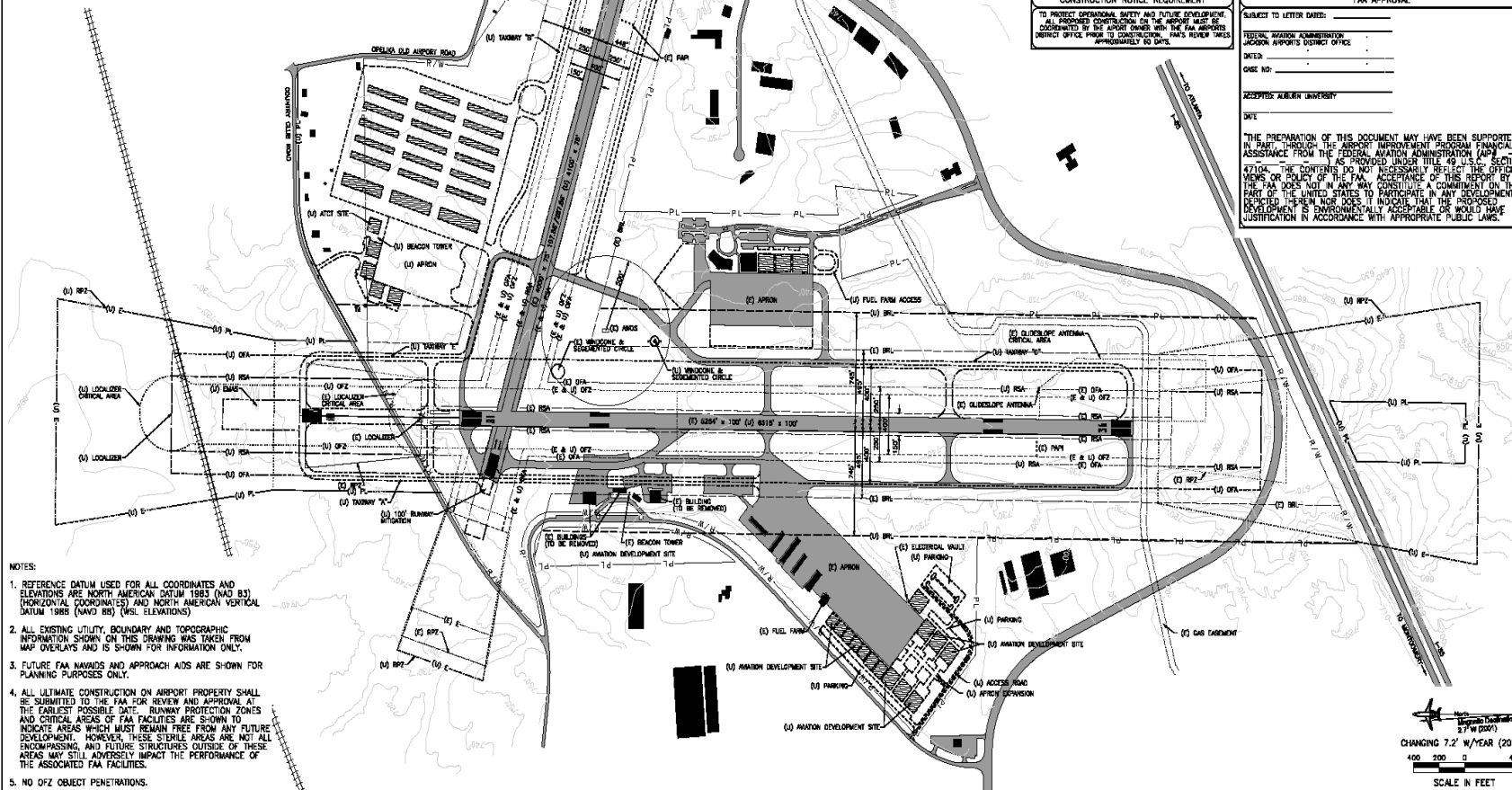
LAYOUT PLAN LEGEND		
ITEM	EXISTING (E)	ULTIMATE (U)
EXISTING PAVEMENT	-----	-----
PAVEMENT	-----	-----
BOUNDARY RESTRICTION LINE	-----	-----
BOUNDARY	-----	-----
PROPERTY LINE	-----	-----
RUNWAY OBJECT FREE ZONE	-----	-----
PROPERTY EASEMENT	-----	-----
EXISTING RAILROAD TRACK	-----	-----
EXISTING CHALK LINE	-----	-----
EXISTING FIBER OPTIC LINE	-----	-----
PAVED ZONE & SECTORED	-----	-----
RUNWAY PROTECTION ZONE	-----	-----
RUNWAY OBJECT FREE AREA	-----	-----
RUNWAY SAFETY AREA	-----	-----
AIRPORT REFERENCE POINT	-----	-----

DECLARED DISTANCES								
RUNWAY	LANDING DISTANCE AVAILABLE (LDA)		ACCELERATED STOP DISTANCE AVAILABLE (ASDA)		TAKE-OFF DISTANCE AVAILABLE (TODA)		TAKE-OFF RUNWAY AVAILABLE (TORA)	
	EXISTING (E)	ULTIMATE (U)	EXISTING (E)	ULTIMATE (U)	EXISTING (E)	ULTIMATE (U)	EXISTING (E)	ULTIMATE (U)
11	4000'	4100'	4000'	4100'	3700'	3800'	3700'	3800'
29	3700'	3800'	4000'	4100'	4000'	4100'	4000'	4100'
18	3264'	8515'	3264'	8515'	3264'	8515'	3264'	8515'
36	3264'	8515'	3264'	8515'	3264'	8515'	3264'	8515'

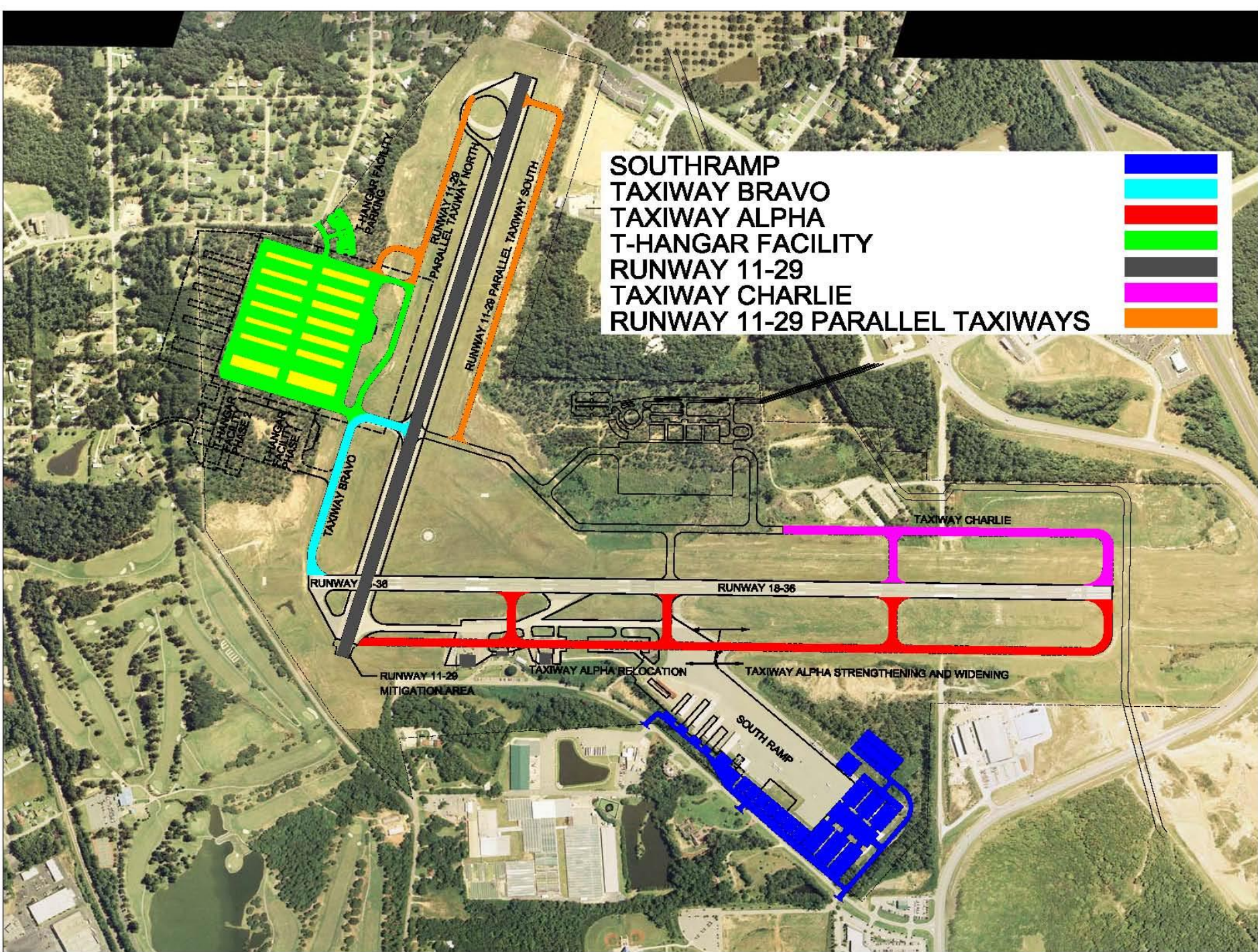
CONSTRUCTION NOTICE REQUIREMENT
TO PROTECT OPERATIONAL SAFETY AND FUTURE DEVELOPMENT, ALL PROPOSED CONSTRUCTION ON THE AIRPORT MUST BE COORDINATED BY THE AIRPORT OWNER WITH THE FAA AIRPORTS DISTRICT OFFICE PRIOR TO CONSTRUCTION. FAA'S REVIEW TIMES APPROXIMATELY 60 DAYS.

FAA APPROVAL
SUBJECT TO LETTER DATED: _____
FEDERAL AVIATION ADMINISTRATION
JACKSON AIRPORTS DISTRICT OFFICE
DATED: _____
CASE NO: _____
ACCEPTED AIRPORT OWNER: _____
DATE: _____

"THE PREPARATION OF THIS DOCUMENT MAY HAVE BEEN SUPPORTED, IN PART, THROUGH THE AIRPORT IMPROVEMENT PROGRAM FINANCIAL ASSISTANCE FROM THE FEDERAL AVIATION ADMINISTRATION (FAA). THE CONTENTS DO NOT CONSTITUTE TITLE OR THE OFFICIAL VIEW OR POLICY OF THE FAA. THE FAA DOES NOT GUARANTEE THE ACCURACY OF THE DATA OR THE RESULTS OF THE ANALYSIS. THE FAA DOES NOT WARRANT OR REPRESENT THAT THE INFORMATION IS ENVIRONMENTALLY ACCEPTABLE OR WOULD HAVE JUSTIFICATION IN ACCORDANCE WITH APPROPRIATE PUBLIC LAWS."



SOUTHRAMP
TAXIWAY BRAVO
TAXIWAY ALPHA
T-HANGAR FACILITY
RUNWAY 11-29
TAXIWAY CHARLIE
RUNWAY 11-29 PARALLEL TAXIWAYS















Compilments of Ace Aerial Photo LLC
Auburn AI
334-332-1951
www.AceAerialPhoto.US



CONCLUSION

- ✈ Continue to support University academic related functions
- ✈ Grow airport to meet current and future demands of the University and the community





Thank You!