

# **Auburn University Parking and Traffic**

# Presenters

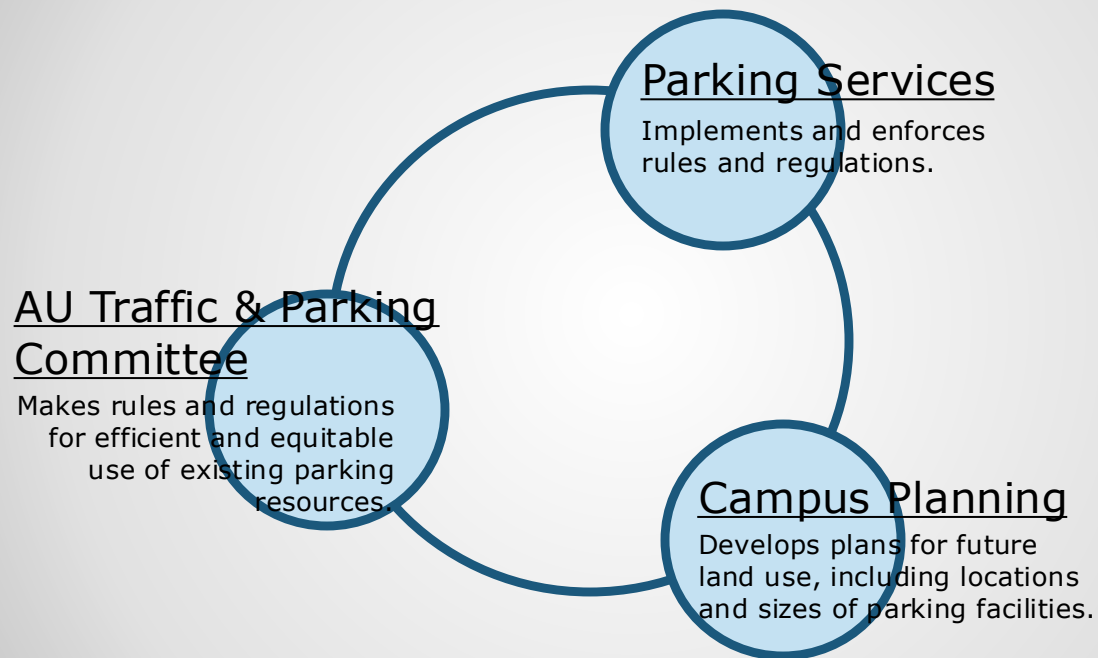
Catherine Love, P.E., JD – Traffic & Parking Committee

Don Andrae – Parking Services Department

Jeffrey Dumars, ASLA, LEED® AP BD+C – Office of Campus Planning

# Parking Policies and Regulations

- How they are made
- Who makes them
- How faculty can have input into the process



# **Auburn University Parking and Traffic Committee**

# Committee Charge

- Standing University Committee
- Appointed by and advisory to the President through the Executive Vice President

## Charge

The committee shall accept suggestions, comments, and complaints relative to the parking of vehicles and the movement of vehicular/pedestrian traffic on campus. Its primary concerns shall be the safety and well-being of students, faculty, staff, vendors, and visitors and the orderly and efficient parking/movement of vehicles and persons. **The committee shall be expected to make recommendations regarding parking lot zoning, zone enforcement procedures, costs and procedures for vehicle registration; procedures and regulations for parking and traffic movement during athletic events, pavement markings, signage, signalization, site lighting, handicapped parking/access, pedestrian malls, shuttle-bus systems, and bicycles/skateboards, etc.** It is recommended that an appointee to this committee not serve on any traffic appeals board.

# Typical Activities of Committee

- Zoning
- Rules and Regulations
- Requests for exception/special consideration
- Annual Parking Occupancy Study
- Meets 4-5 times per year
- Minutes and annual report

# Agenda Set by Chair

- Unfinished business
- Topics raised by committee members
- Topics addressed to the Committee Chair by the President's office and/or other university constituents



# Traffic and Parking Committee – FY 2012-2013

<b>Continuing/Ex Officio</b>	
University Engineer, Facilities Management - Chair	Catherine Love
University Architect, Facilities Management - Vice-Chair	Greg Parsons
University Planner, Facilities Management	Tom Tillman
Director, Athletics Facilities	Keith Bagwell
Assoc Director , Public Safety and Security	Randy Cеровsky
Director, Parking and Transit Services	David George
Manager, Parking Services	Don Andrae
Director, AA/EEO	Kelley Taylor
Faculty	Jennifer Adams (Communications and Journalism) - 2013
Faculty	Song-Yul Choe (Mechanical Engineering)- 2013
Faculty	Jeffrey LaMondia (Civil Engineering) - 2014
A&P	Vivian Miller (Business Outreach) - 2013
	Matt Williams (Office of Sustainability)-2013
Staff	Jennifer Richardson (Property Services) - 2014
	Mary Sinnott (Student Financial Services) - 2013
Graduate Student	Michael Pukish - 2013
Undergraduate Students	Walter Whatley - 2013
	Rob Garcia - 2013
	Wilson Yeilding - 2013
	Sloane Bell - 2013
	Williams Whittlesey - alternate - 2013

# Appeals

- Three (3) appeals committees
- Not affiliated with Parking Services Department
- Appointed by and advisory to the President through the Executive VP
- Meet Tuesday, Wednesday, & Thursday

# Auburn University Parking & Traffic Committee Contact Information

Chair – Catherine Love      phone: (334) 844-9579  
email: lovecat@auburn.edu

## Faculty Representatives

Jennifer Adams: (Communications and Journalism) adamsj1@auburn.edu  
Song-Yul Choe: (Mechanical Engineering) choeson@auburn.edu  
Jeffrey LaMondia: (Civil Engineering) jjl0006@auburn.edu

# **Auburn University Parking Services**

# Mission Statement

Facilitate safe and convenient access to Auburn University while encouraging alternative modes of transportation.

# Responsibilities

- Implementation and enforcement of parking rules and regulations
- Compilation and distribution of Rules and Regulations pertaining to traffic and parking on property belonging to AU
- Sale of parking permits
- Collection of parking fines (no moving violations)
- Discretion to deal with emergencies, special events, service and delivery issues, etc.
- Signage and Pavement Markings handled by Facilities Management per work-orders from Parking Services

# Parking at AU

- Faculty and Staff - "Broad Zone System"
  - All Faculty (and Staff with > 10 yrs of service) entitled to park in any area zoned "A", "B", or "C"
  - Staff with < 10 years of services entitled to park in any area zoned "B" or "C"
- Students – "Assigned Lot" System
  - Residents (since 2008) – RH, RQ, RW, RO
    - "Proximate Lots" by lottery with up-charge
    - "Overflow" in South Quad Deck and West Campus
  - Commuters (started Fall 2012) – CP, C
    - "Proximate Lots" (Donahue Dr.) by lottery with up-charge.
    - "Overflow" in West Campus Parking

# Permit Sales

Permit Type	Permits Sold	
	2011'- 2012'	2012'- 2013'
<b>A</b>	<b>3538</b>	<b>3115</b>
RH-RESIDENT HILL	812	764
RQ-RESIDENT QUAD	207	342
RO-RESIDENT OVERFLOW	1521	1052
TEMP A	222	38
TEMP B	1322	352
<b>B</b>	<b>1071</b>	<b>902</b>
C	11196	5302
PC	0	1823
C-AUM STUDENT	40	4
RW-RESIDENT VILLAGE	796	815
G-GRAD STUDENT	144	231
MOTORCYCLE- FACULTY	113	104
MOTORCYCLE- STUDENT	310	231
<b>K-BICYCLE</b>	<b>429</b>	<b>2589</b>
CONVERTIBLE- FACULTY	18	14
CONVERTIBLE- STUDENT	16	8
<b>Total Permits:</b>	<b>21755</b>	<b>17686</b>

- A + B zone permits:
  - 3604 parking spaces
  - 2012 : 1.28 permits/space
  - 2013: 1.12 permits/space to date
- Bicycles:
  - Permit enforcement began 2013
  - 1,984 spaces
  - 2589 permits sold to date



# Impact of Change to Assigned Lot System for Commuting Students

- Less traffic on Donahue Drive
- No idling/circling for vacant parking spaces
- Carpooling!
- Greater than 20,000 rides per day on Tiger Transit
- Less complaints from students – especially complaints that they couldn't find a parking space and were late for class, missed an exam, etc.

# Impact of Change to Assigned Lot System for Commuting Students

- Faculty reported difficulty in finding available parking spaces since prohibited from “parking down” into PC
  - Committee had rezoned @ 80 spaces from PC to B in early summer 2012
  - Committee recently rezoned 99 more spaces from PC to B (to be complete in Oct 2012)
  - 40 A spaces to re-open in Lowder Lot when construction finished

# Contact Information

Don Andrae – Manager of Parking Services

Telephone #: 844-4143

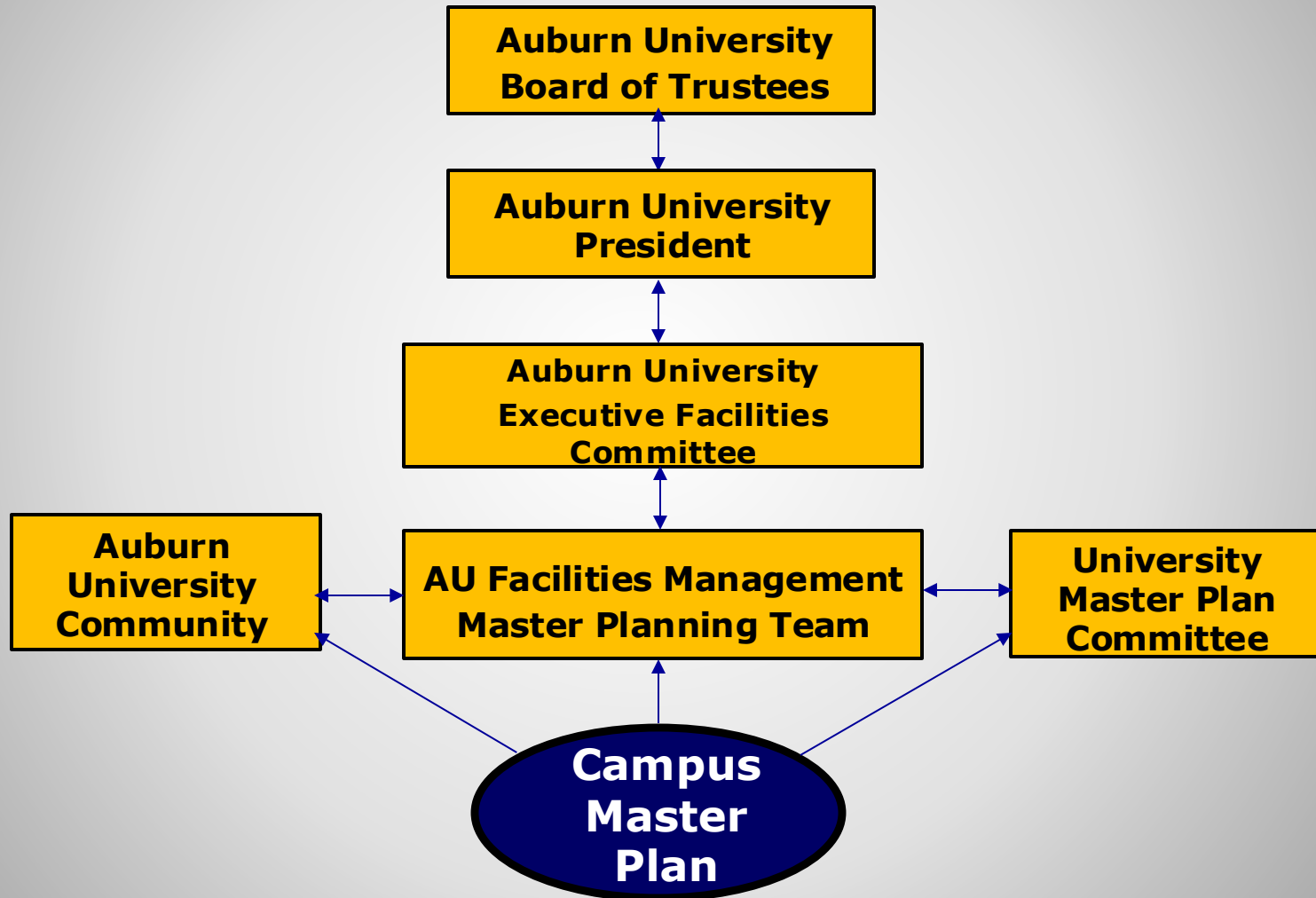
Email: [dza0015@auburn.edu](mailto:dza0015@auburn.edu)

# **Auburn University Campus Planning**

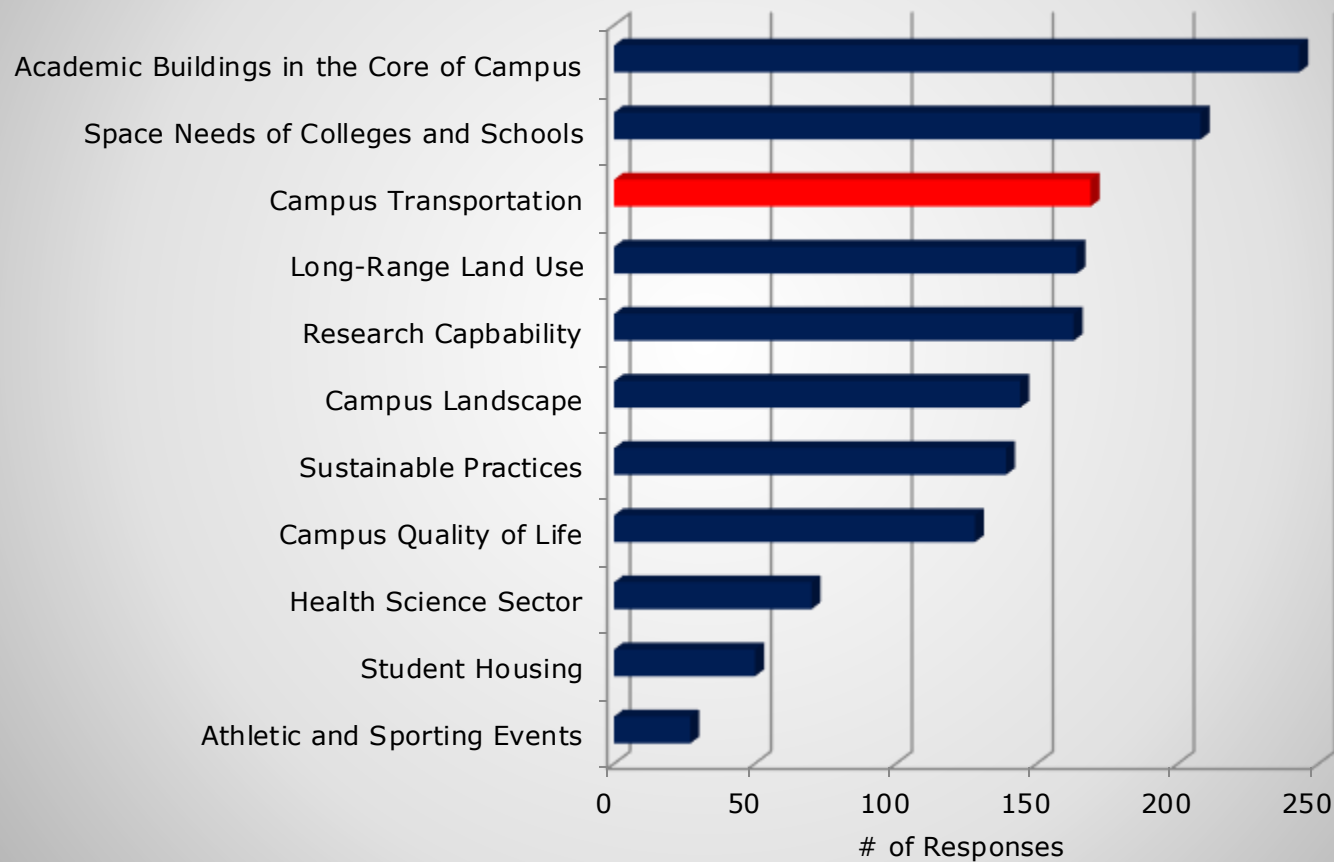
# University Master Plan

The Facilities Management Office of Campus Planning & Space Management maintains and revises the *Comprehensive Campus Master Plan*, adopted in June 2002, for the main campus; and development and maintenance of master plans for other properties, as necessary, to serve as frameworks for the preservation of existing assets and for guiding physical development.

# Master Plan Governance Structure



# Master Plan Priorities: Campus Survey Faculty Responses



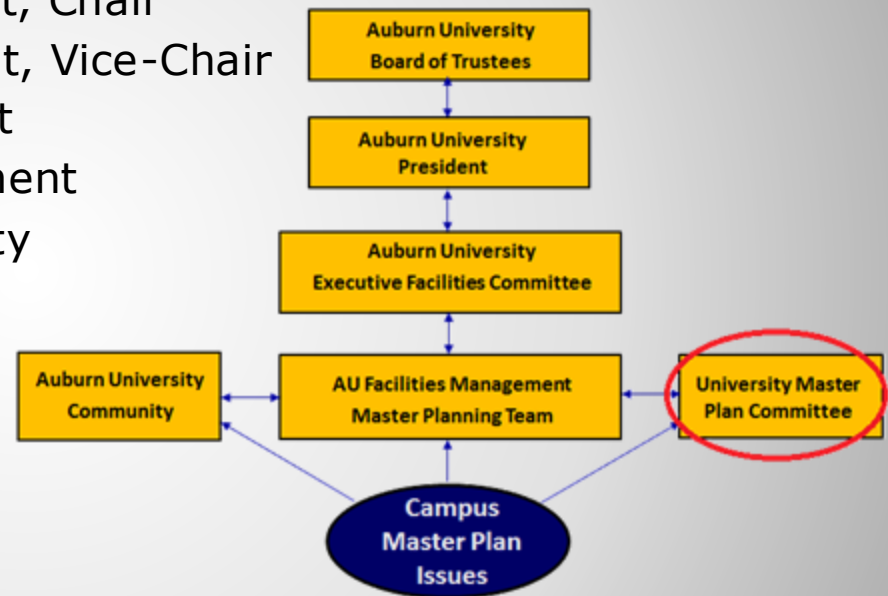
# Master Plan 2012 Update Planning Elements

- Replace Academic Buildings in the Campus Core
- Space Needs of College and Schools
- Campus Transportation – plan to address campus traffic flow, the pedestrian nature of the campus, transit capability, non-motorized modes of transportation, and parking in a coordinated and comprehensive manner
- Long Range Land Use Plan
- Research Capability
- Campus Landscape
- Sustainable Practices
- Campus Quality of Life
- Health Science Sector at Auburn University Main Campus
- Student Housing on Campus
- Sports and Athletics Facilities
- Campus Security



# University Master Plan Update Committee

- Tom Tillman, Facilities Management, Chair
- Greg Parson, Facilities Management, Vice-Chair
- Emmett Winn, Office of the Provost
- Catherine Love, Facilities Management
- Mike Kensler, Office of Sustainability
- Steven Nelson, Administrative and Professional Assembly
- [Rod Turochy, Faculty](#)
- [Joseph Kemble, Faculty](#)
- [John Pittari, Faculty](#)
- [Charlene LeBleu, Faculty](#)
- Additional Ad Hoc Representation: AVP-Facilities/AVP-Research/AVP-Aux. Serv./AVP-Student Aff./Dir. OIRA/Dir. Real Est./AAES/Assoc. Dir. Ath./[University Senate Representative](#)/A&P Assembly/Staff Council/Grad. Sch. Council/SGA/Div. & Multicultural Affairs/Alumni Assoc./City of Auburn



# Executive Facilities Committee

- Provost, Chair
- Assistant VP for Facilities, Co-Chair
- Executive Vice President
- University Senate Leadership Representative
- Associate Provost
- Vice President for Research
- Vice President for Student Affairs
- Athletic Director
- Assistant Vice President for Auxiliary Services
- Student Government Association Representative
- College/School Dean's Representative (2 year appointment)
- College School Dean's Representative (2 year appointment)



# Ways Faculty Can Participate and Influence the Master Plan Update

1) Participant in Provost Open Forums on topics of interest :

❑ October 17: Parking, Circulation & Mobility

For full schedule see:

[http://www.auburn.edu/academic/provost/announcement/2012-2013\\_ProvostForums.html](http://www.auburn.edu/academic/provost/announcement/2012-2013_ProvostForums.html)

2) Visit the Master Plan Website and draft work products and offer comments:

<http://www.auburn.edu/administration/facilities/>  
Click on MASTER PLAN 2012 Update

# Ways Faculty Can Participate and Influence the Master Plan Update

- 3) Full University Senate Presentation(s): Facilities Management has offered to present draft options for the various planning elements to the full University Senate
- 4) Faculty can contact their representative on the Master Plan Update and the Executive Facilities Committees
  - ❑ University Senate Chair, Bill Sauser, 844-2498, sausewi@auburn.edu
  - Rod Turochy, Faculty
  - Rebecca Retzlaff, Faculty
  - Joseph Kemble, Faculty
  - Charlene LeBleu, Faculty

# Ways Faculty Can Participate and Influence the Master Plan Update

## 4) Faculty can contact the planning team directly

- ❑ Director Campus Planning, Tom Tillman, 844-9586, [tillmte@auburn.edu](mailto:tillmte@auburn.edu)
- ❑ Project Manager, Jeffrey Dumars, 844-1132, [jkd0006@auburn.edu](mailto:jkd0006@auburn.edu)
- ❑ Campus Planner II, Richard Guether, 844-7454, [rcg0011@auburn.edu](mailto:rcg0011@auburn.edu)

*End*

vehicle only". It was acknowledged that the spaces are not being used as intended and are not being enforced. AU does not (yet?) have HOV and Fuel Efficient Vehicle incentive programs. Parsons said that the spaces were created in order to get LEED credits (US Green Building Council) during design and construction of the New Track Building. The building is presently graded as LEED gold but they are appealing for an upgrade to LEED platinum rating. Greg suggested that we not make any changes to those 2 spaces at the current time.

**Bagwell motioned for approval of Andrae's proposal for zoning the Track Lot B and C/R (except the HOV and fuel-efficient vehicle spaces). David George seconded and the motion passed unanimously.**

**The next meeting was scheduled for March 21, 2012.**

**With no further business to discuss, the meeting was adjourned at 3:00.**