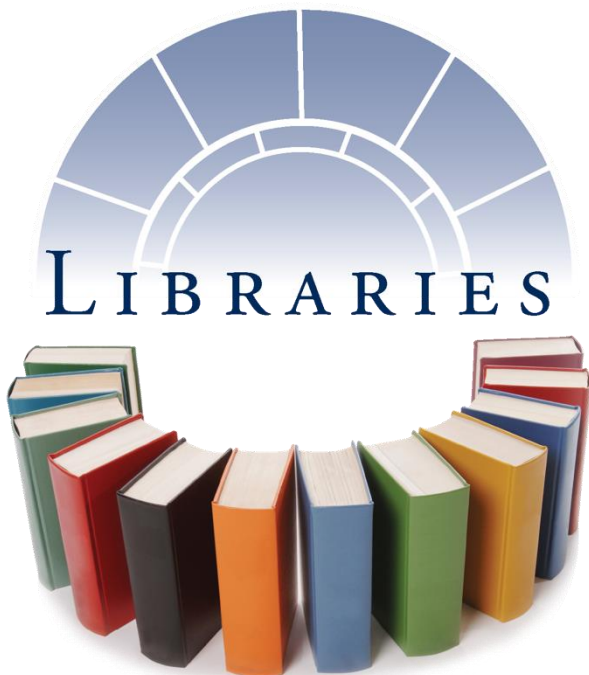




# **Mell Classroom Building & Offsite Library Archive Facility (OLAF)**



---

**Dean of Auburn University Libraries  
Bonnie MacEwan**

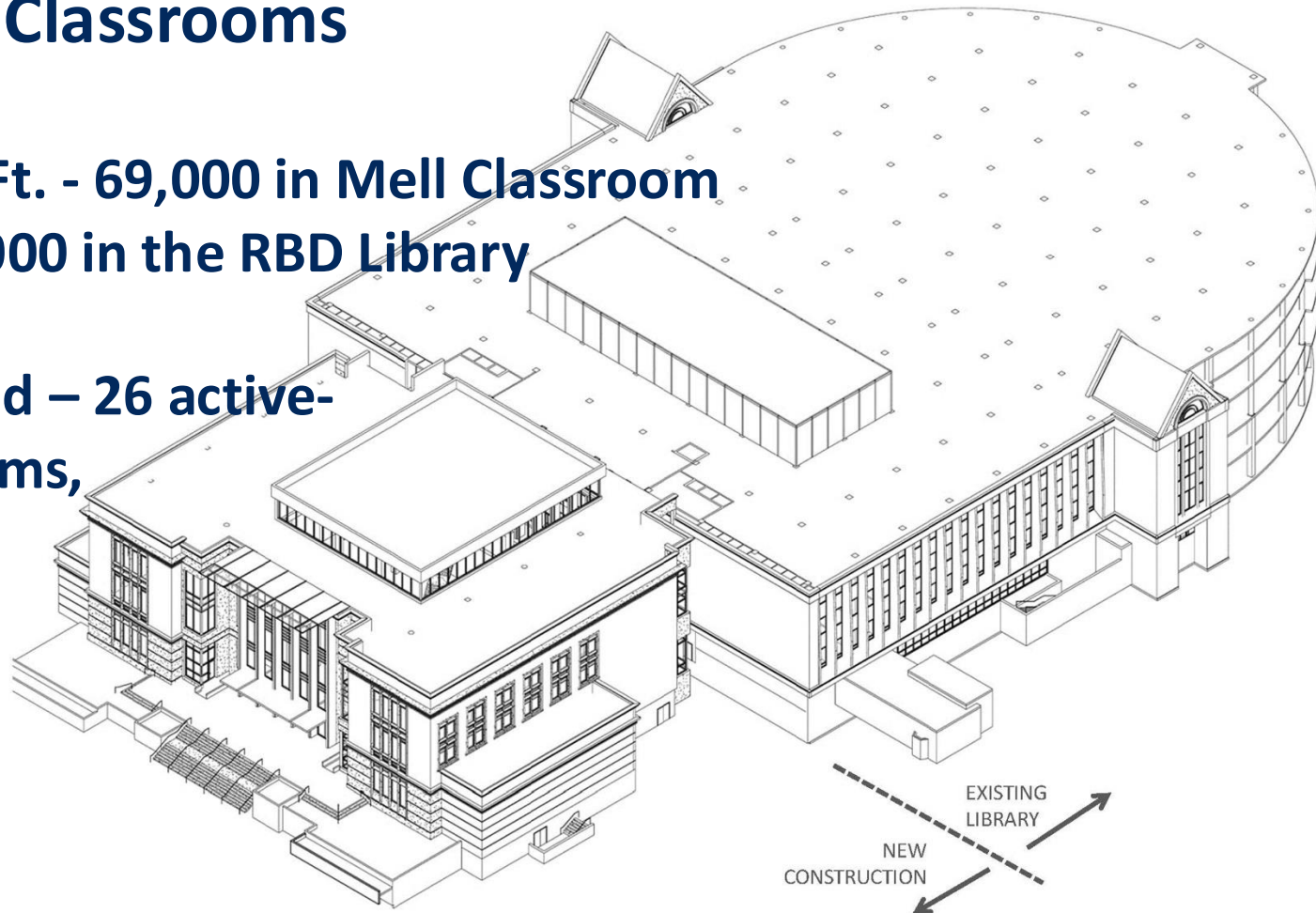
# MCB Project Quick Facts

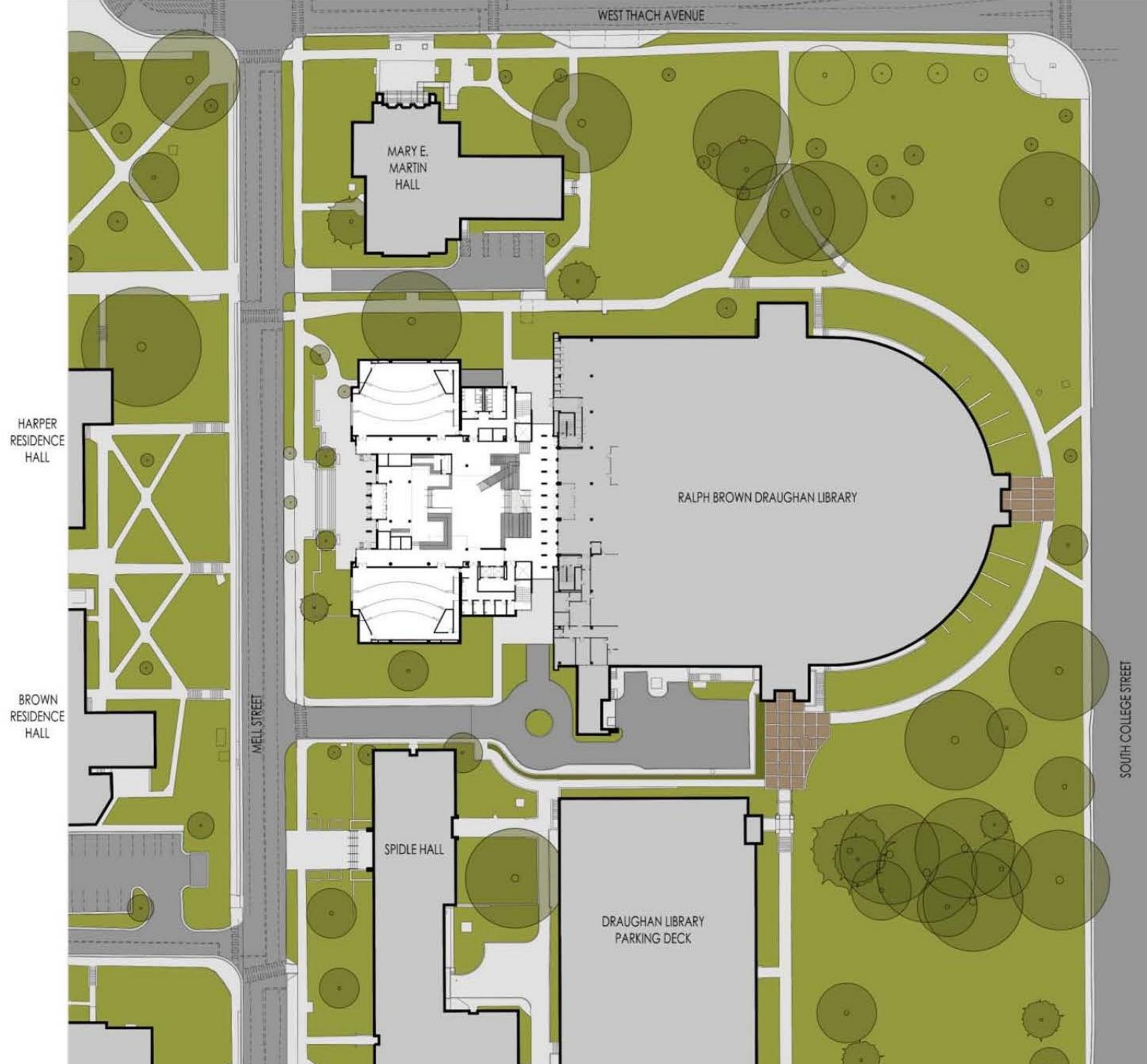
**Construction Dates - 12/2015 to 8/2017**

**Primary Use - Classrooms**

**107,000 Total SqFt. - 69,000 in Mell Classroom Building and 38,000 in the RBD Library**

**Classrooms Added – 26 active-learning classrooms,  
two lecture halls**













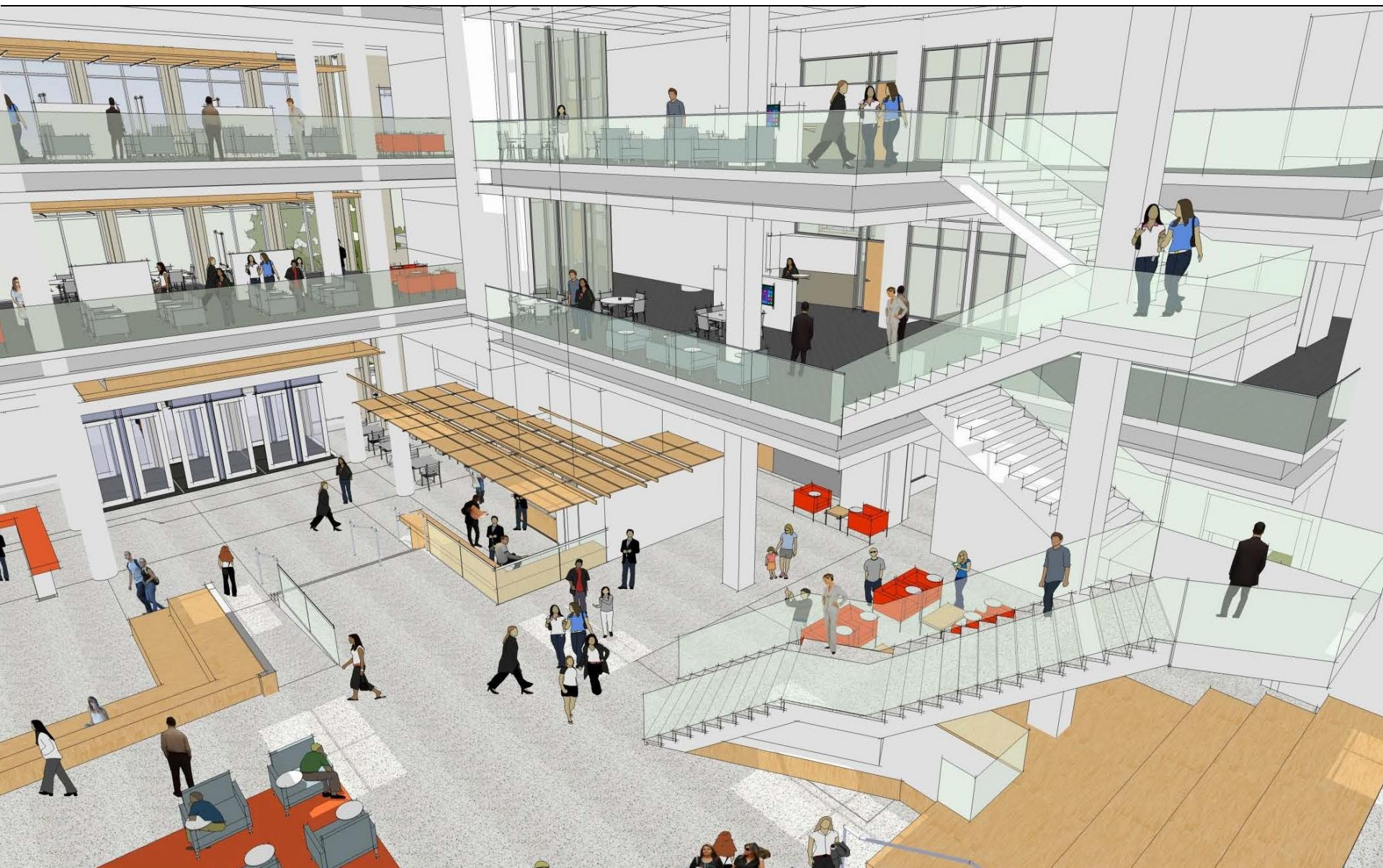














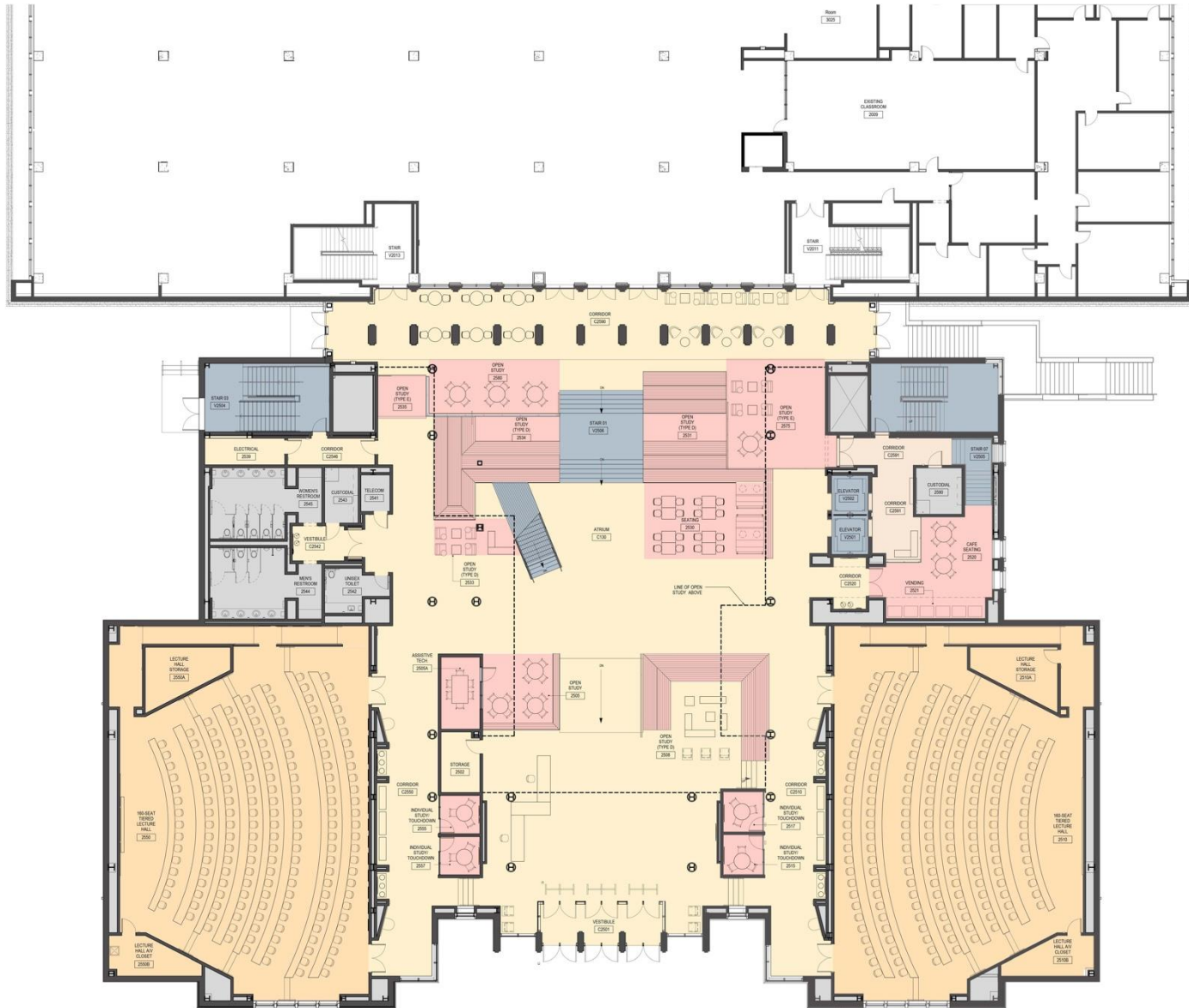




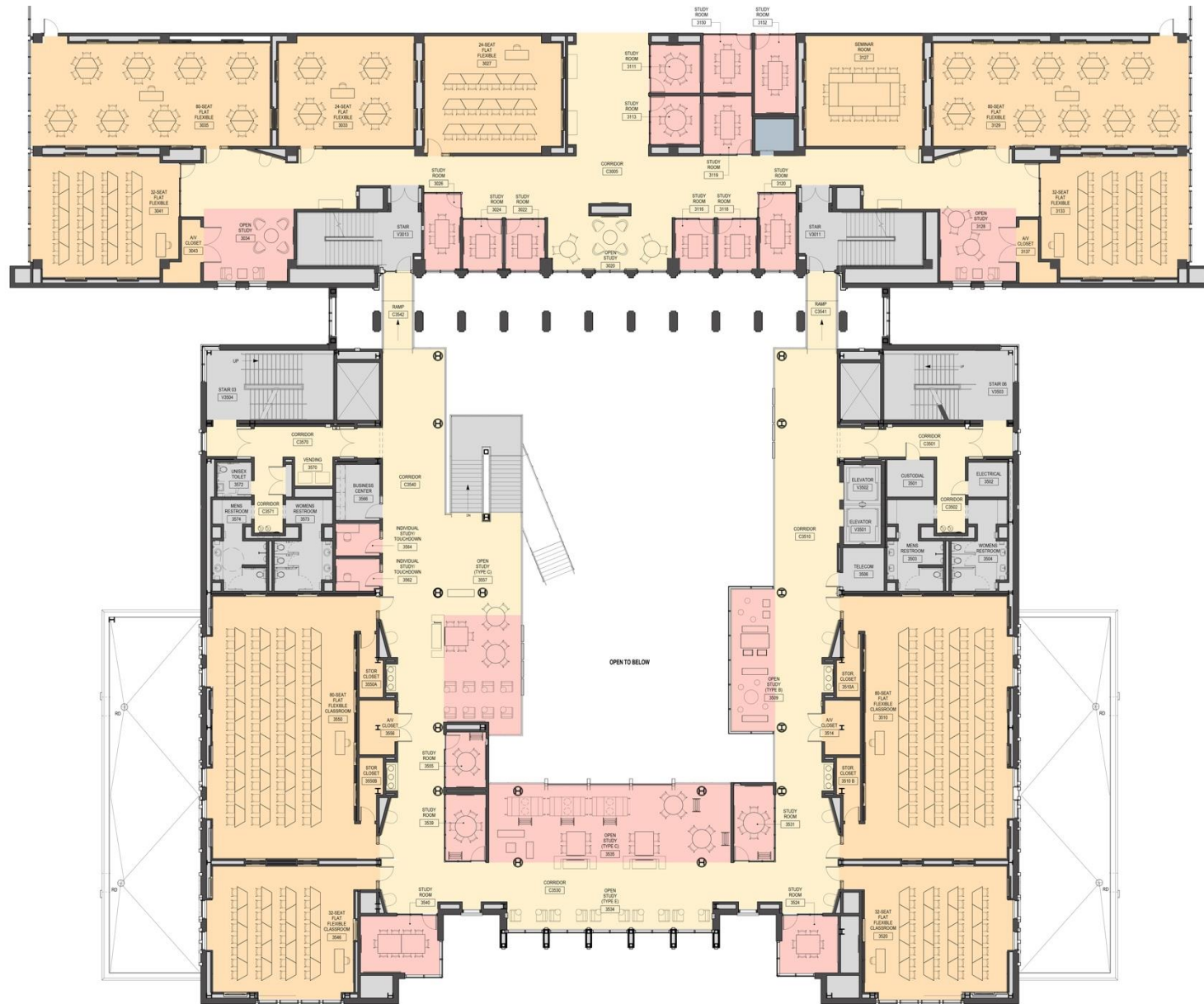




## 11



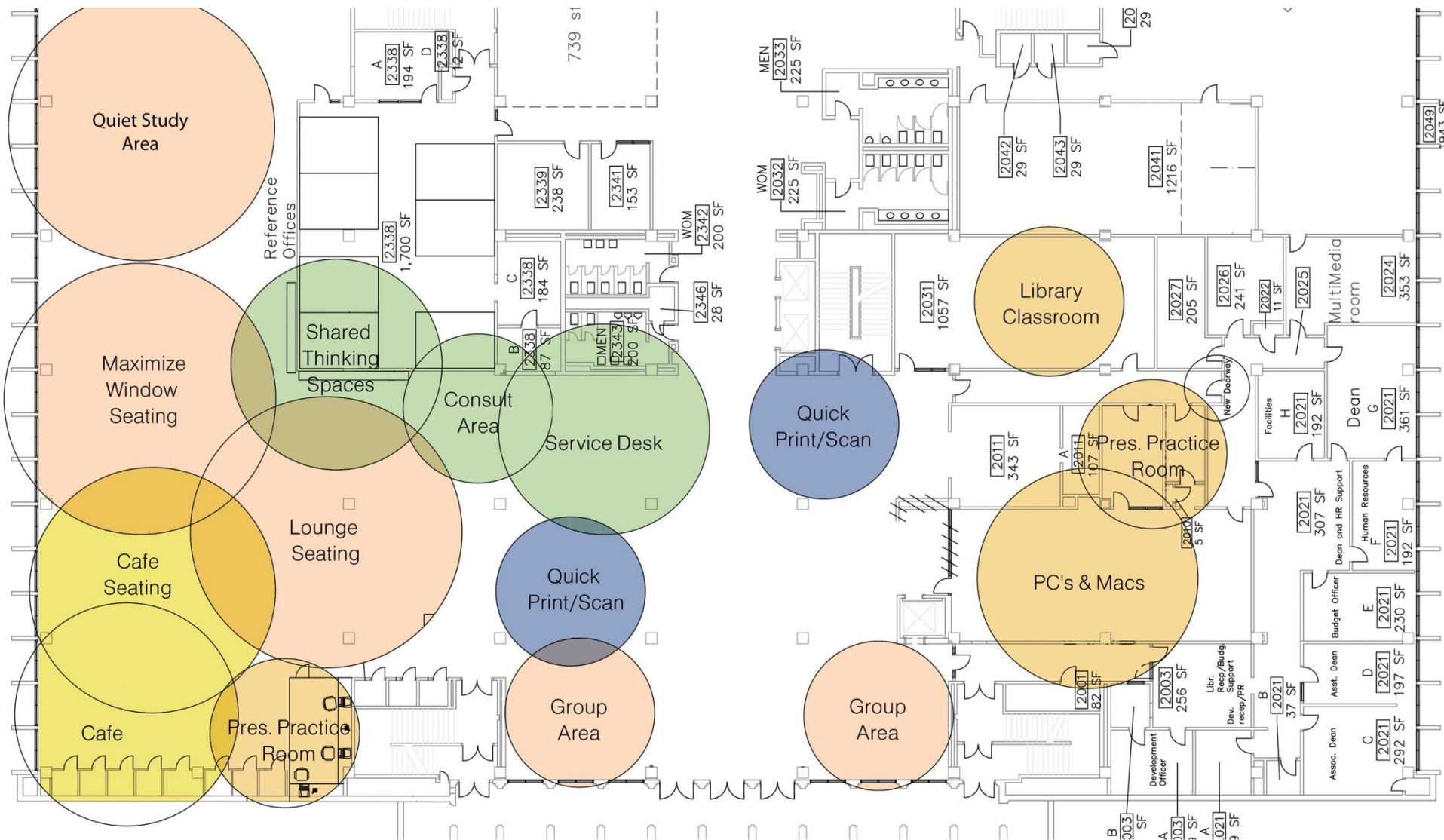
# Third Floor of RBD Library with attached MCB







## Second Floor of RBD Library after MCB construction





# **O.L.A.F.**

## **Offsite Library Archive Facility**

# **O.L.A.F. Project Quick Facts**

**Construction Dates - 12/2015 to 4/2016**

**Purpose - To house and preserve volumes for projects such as the Scholars Trust**

**Building – 16,900 square feet**

**Shelving – 36,327 linear feet**

**Accessibility - Library Courier Service with office or library delivery**















