

MELL CLASSROOM BUILDING @ RBD

UNIVERSITY SENATE
APRIL 18, 2017



OFFICE OF THE PROVOST

MELL CLASSROOM BUILDING @ RBD

IMPORTANT DATES

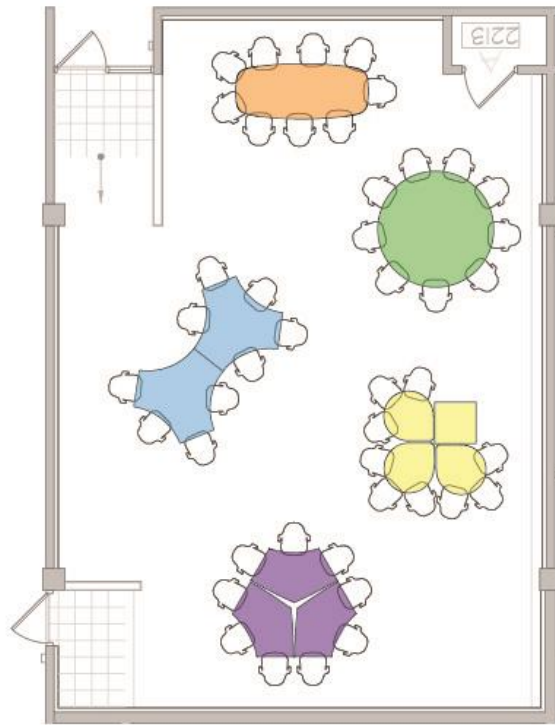
- **August 18, 2017**
Mell Classroom Building Opens
- **September 15, 2017**
Formal Opening by the BOT

WHY IS THE MELL BUILDING IMPORTANT?

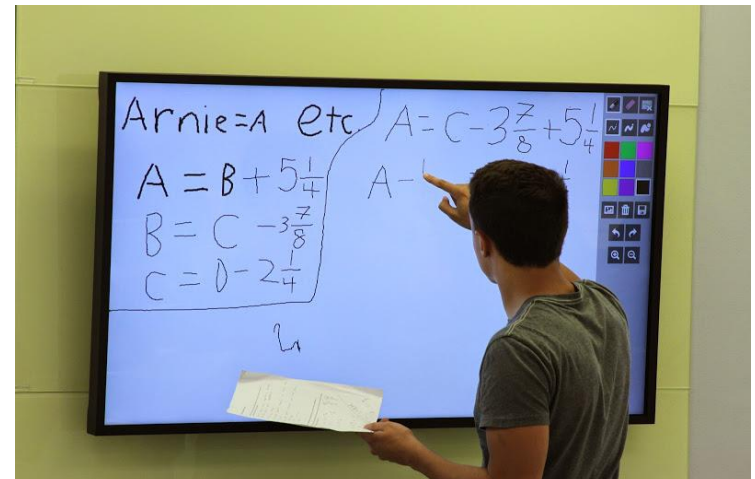
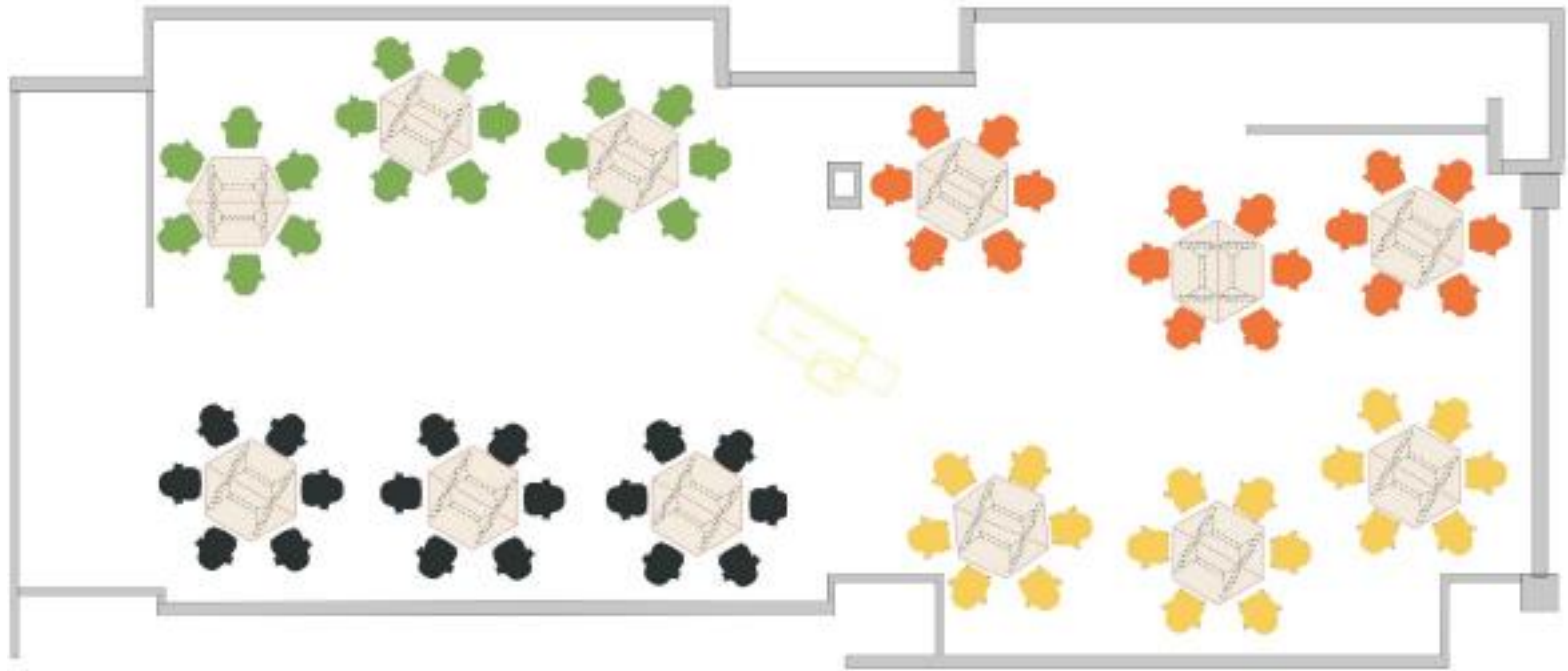
- 1. Advances Auburn's teaching and learning by promoting Engaged Active Student Learning (EASL) environments.**
- 2. Symbolizes Auburn's investment in teaching and learning innovation.**
- 3. Fosters students' diverse skill sets and supports learning outcomes.**
- 4. Replaces older campus classroom spaces.**
- 5. Models classrooms utilized in professional schools.**
- 6. Integrates learning with resources available in RBD Library.**

WHAT WILL LEARNING LOOK LIKE INSIDE MELL?

Auburn began piloting EASL approaches in 2011 with the development of Haley Center 2213 and Science Center Classroom 118.



WHAT WILL LEARNING LOOK LIKE INSIDE MELL?



WHAT WILL LEARNING LOOK LIKE INSIDE MELL?

- Classrooms will employ active learning strategies ranging from simple (i.e. short writing assignments, self-assessments) to complex (i.e. active review sessions and inquiry learning).

- Examples of Active Learning:

1. Structured exercises
2. Challenging discussions
3. Team projects
4. Peer critiques
5. Internships
6. Independent study
7. Cooperative job programs
8. Teach peers



improved **content retention**
and higher grades in
subsequent courses



average point increase
in final course grades



enhanced
communication,
collaboration and
leadership skills

UNIQUE MELL FEATURES

**29 EASL
CLASSROOMS**

**DINING
VENUES**

**2 LECTURE
HALLS**



**INFORMAL
LEARNING
SPACES**

**REVITALIZED
RBD SPACE**

**DIGITAL
SIGNAGE TO
DISPLAY
STUDENT
WORK**

69,000 SQUARE FEET

UNITS TEACHING IN MELL (CURRENTLY)

➤ **64 individual classes scheduled / 102 individual sections:**

- College of Agriculture
- College of Human Sciences
- College of Liberal Arts
- College of Science and Mathematics
- Samuel Ginn College of Engineering
- University Programs

HOW ARE WE PREPARING FACULTY?

- **Multiple years of redesigning courses to support student learning in EASL spaces.**
- **Pre-term workshops, tutorials, reminders on using EASL spaces effectively.**
- **Learning Consultants available to come to class to help faculty with technology.**
- **Web site with instructions and support information (auburn.edu/easl).**

HOW ARE WE PREPARING STUDENTS?

- **Welcome Week tutorials on using EASL spaces effectively and how to prepare for these classes.**
- **Learning Consultants available to help students figure out technology.**
- **Classroom spaces become informal learning spaces outside of scheduled classes.**
- **Web site with instructions and tutorials.**

CONTACT INFORMATION

Wiebke Kuhn

Learning Spaces and Faculty Development Coordinator

kuhnwi1@auburn.edu

334-750-3360

Biggio Center, Foy 136