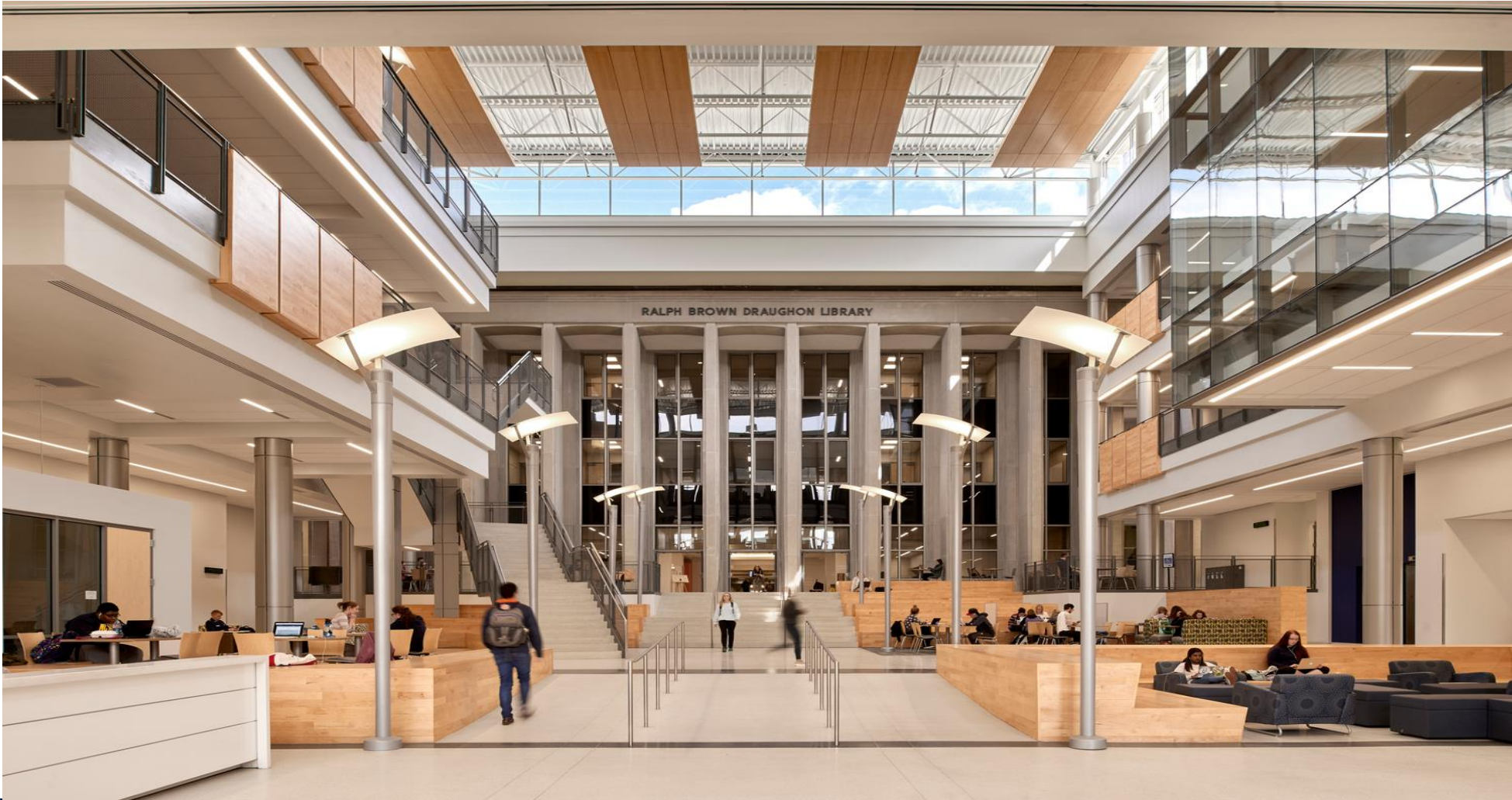


The State of Mell @ RBD 2018



Wiebke Kuhn
Learning Spaces & Faculty Development Coordinator



Engaged Active Student Learning (EASL) Spaces

Evidence suggests that **academic performance increases** with active learning especially in STEM courses (Freeman et al., 2014)

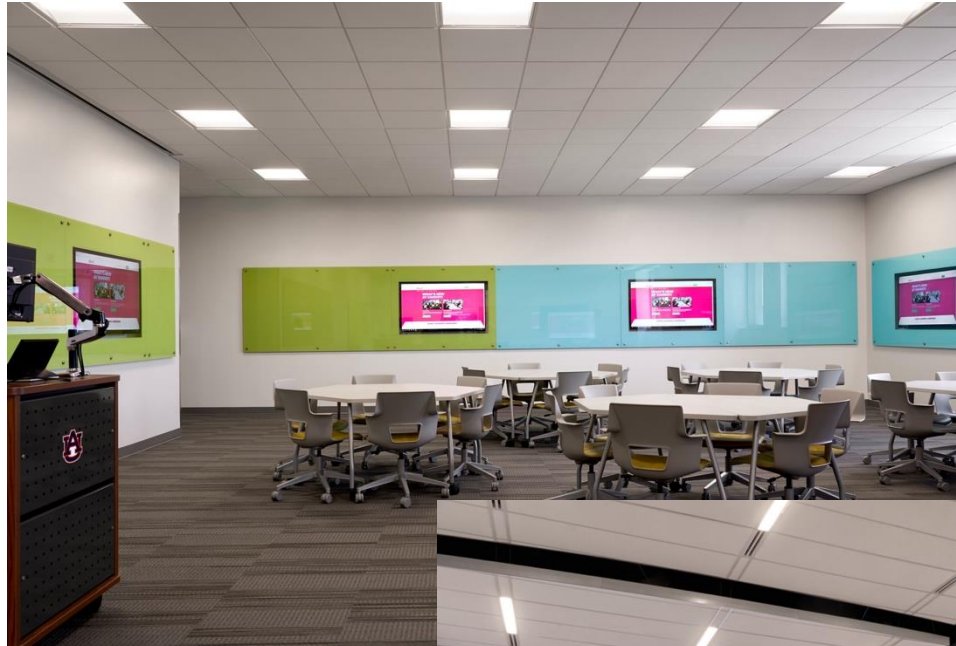
- Auburn has **50 EASL classrooms**; **28** in the Mell Classroom Building @ RBD Library
- Fall 2018: **43%** of Auburn students learning in EASL spaces; **13%** in multiple EASL courses



- **558 faculty and instructional staff** trained in EASL space pedagogy to maximize student learning
- **1,049 faculty, GTAs, & instructional staff** have engaged in Biggio Center teaching and learning professional development since Fall 2017

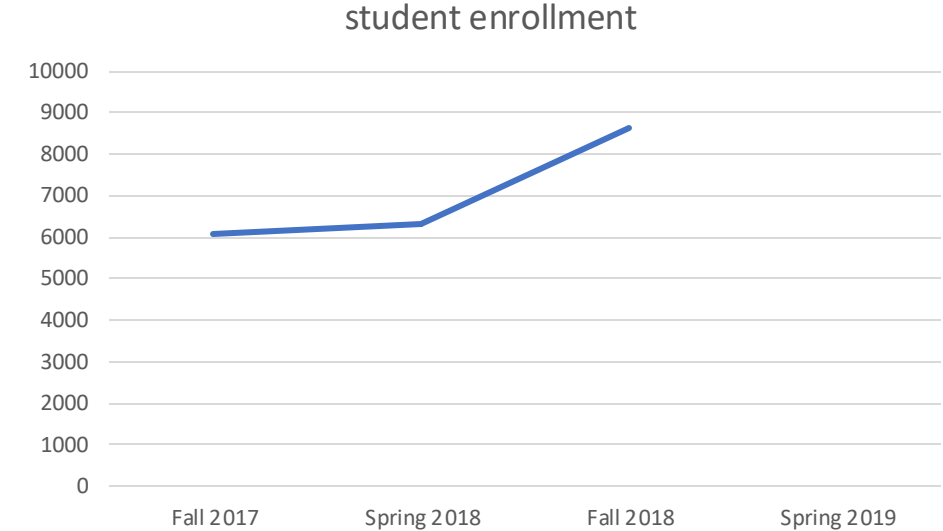
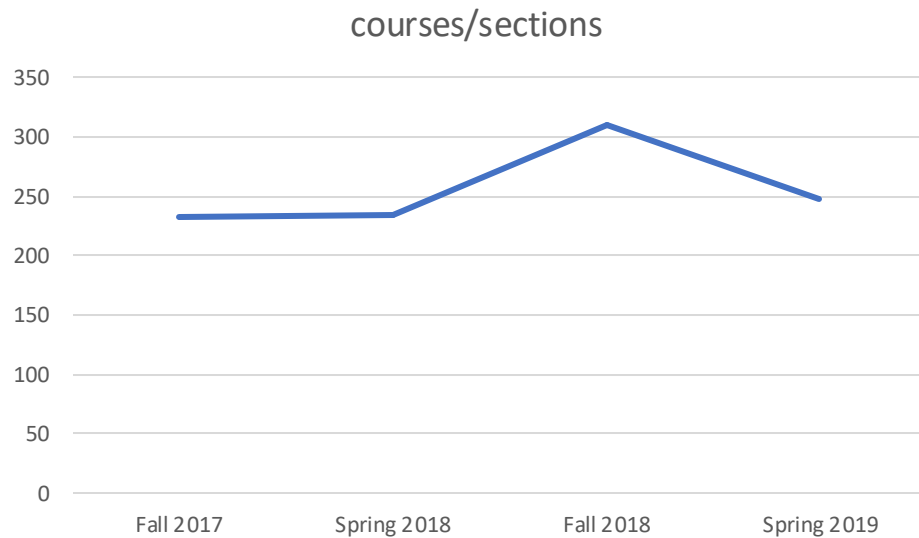
Spaces

- 2 lecture halls (166 seats)
- Full EASL
- EASL Lite
- 40 Study spaces
- Panera



Classes Fall 2017-Spring 2019

- First year – Graduate courses
- Colleges: 10
- Departments: 36



Term	student enrollment		courses/ sections
Fall 2017	6090		232
Spring 2018	6300		235
Fall 2018	8616		310
Spring 2019			248

Events

- Over 5,000 rooms reserved for various events
 - Critical Conversations
 - Workshops, conferences
 - Summer camps
 - Supplemental Instruction
- Over 60,000 study room reservations



Come Visit!

